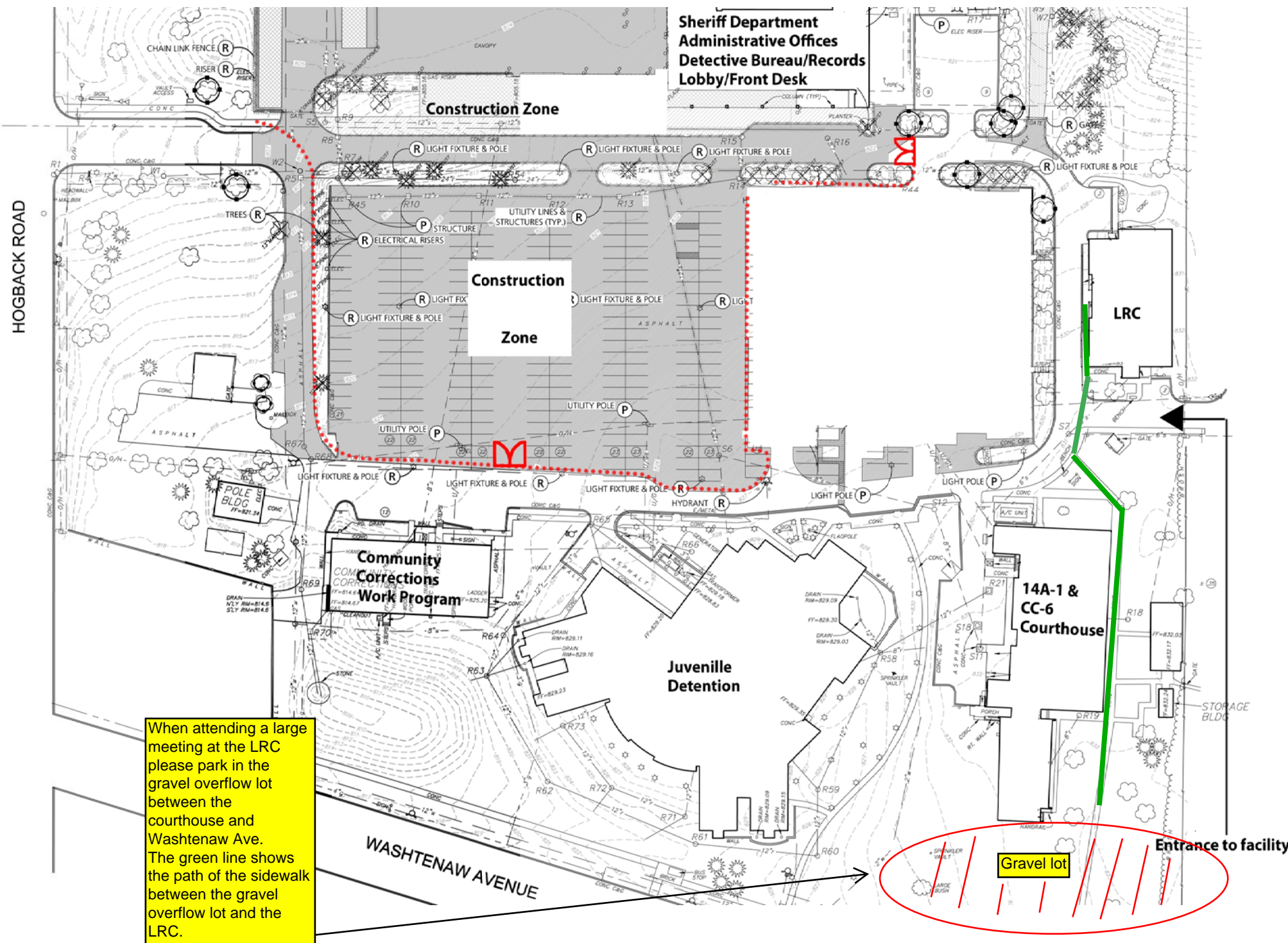


S  
BE  
R  
BY  
NY  
A  
O.  
RS  
E  
ND  
:



**Sheriff Department  
Administrative Offices  
Detective Bureau/Records  
Lobby/Front Desk**

**Construction Zone**

**Construction  
Zone**

**LRC**

**Community  
Corrections  
Work Program**

**Juvenile  
Detention**

**14A-1 &  
CC-6  
Courthouse**

When attending a large meeting at the LRC please park in the gravel overflow lot between the courthouse and Washtenaw Ave. The green line shows the path of the sidewalk between the gravel overflow lot and the LRC.

**Gravel lot**

**Entrance to facility**

**WASHTENAW AVENUE**

**HOGBACK ROAD**