

2010 Revenue Year to Date\*

Investment Earnings	\$737,602
Delinquent Taxes & Fees	\$6,262,044
Accommodation Tax	\$3,539,013
Dog Licenses	\$37,922
Tax Searches	\$24,971
	<hr/>
	\$10,601,552

\*General Ledger/Subsidiary Ledger Information

A Message from the  
County Treasurer

The Michigan Constitution mandates authority to County Treasurers to receive and invest all County funds and to collect delinquent real property taxes. These activities are major sources of revenue for the County budget.

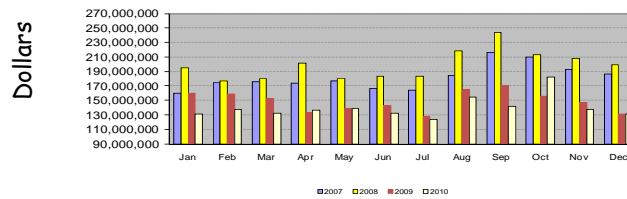
Delinquent Tax Income—Collections are increasingly difficult to achieve in the current economic environment, but dedicated staff work diligently with owners to collect taxes and prevent foreclosure. Collections prevent homelessness and blight and also augment the General Fund. In 2010 the Treasurer returned \$5.5 million to the County—more than double what was budgeted.

Interest Income—While interest rates continue to be very low, the Treasurer earned income for the County at a rate well above the benchmark and mitigated risk by adhering to State law and using good internal controls.

Dog Licenses—Commissioners approved new licensing fees and a multi-year license to coincide with rabies vaccinations. This initiative has improved customer service and the cost effectiveness of issuing licenses.

Investment Portfolio

Historical Comparison By Month

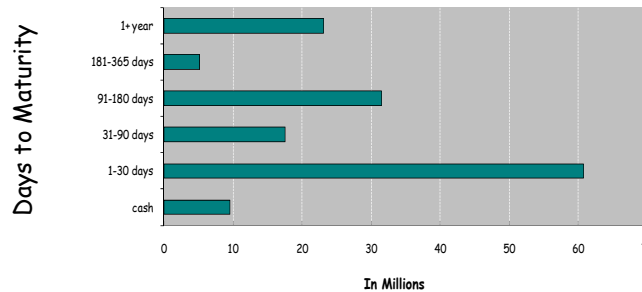


Total Cash and Investments

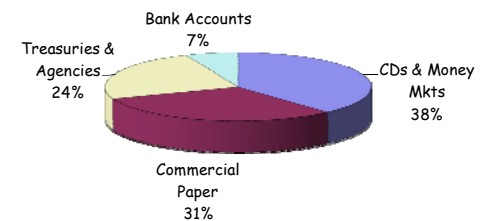
CDs & Money Mkts	\$56,509,647
Commercial Paper	\$45,815,000
Treasuries & Agencies	\$35,660,000
Bank Accounts	\$9,561,230
	<hr/>
	\$147,545,877

Diversification

Diversification By Maturity Date



Diversification by Investment Type



Yield

Average Weighted Yield

