

Community Partners for Clean Streams Monthly eMonitor



Volume 1, Number 7



August 2004 Issue

*A Publication of the Washtenaw County Drain Commissioner's Office
Janis A. Bobrin, Drain Commissioner*

In This Month's eMonitor

Up Front:	Welcome to the Community Partners Monthly eMonitor
Web Page of the Month:	Natural Resource Conservation Service, Backyard Conservation
CPCS News	New and Renewed Partners
BMP of the Month:	Water Conservation
CPCS Events:	Huron River Days

Up Front

Welcome to the Community Partners for Clean Stream Monthly eMonitor

The eMonitor is designed to keep Partners updated on CPCS and stormwater management issues, provide helpful information to reduce stormwater and nonpoint source pollution, recognize new Partners, highlight upcoming events, and allow increased networking opportunities. We hope you enjoy each edition of the Monthly eMonitor and welcome any comments, concerns, or suggestions.

Web Page of the Month



Natural Resource Conservation Service Backyard Conservation

<http://www.nrcs.usda.gov/feature/backyard/>

“Backyard Conservation” shows how proven and effective agricultural practices can be implemented in the residential or commercial setting. Contained in this website are ten conservation practices, outlines in tip sheets, on the following topics: Backyard Pond, Backyard Wetland, Composting, Mulching, Nutrient Management, Pest Management, Terracing, Tree Planting, **Water Conservation**, and Wildlife Habitat. These tip sheets

offer how-to steps and helpful hints to create and maintain beautiful landscapes that are environmentally friendly.

[CPCS News](#)

CPCS Participant List

For a listing of current **83** community Partners, see our webpage at

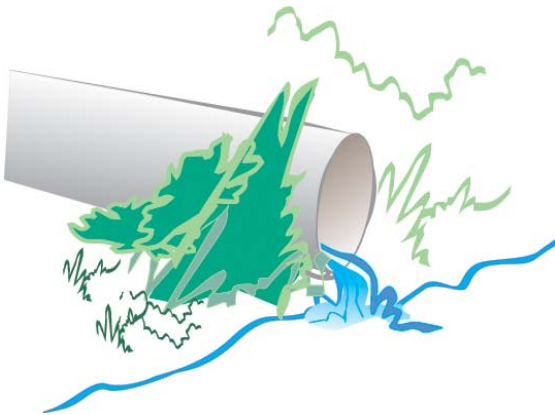
http://www.ewashtenaw.org/government/drain_commissioner/dc_cpcs_partners_8_04.pdf

New and Renewed Partners

CPCS recognizes the following **new** Partnerships:

- Ann Arbor District Library
- Subaru Research and Development, Inc.
- ReCellular, Inc.

CPCS recognizes the following **renewed** Partnerships for a 3 year term:



- Briarwood Shopping Center
- EPA – National Vehicle Fuel Emissions Laboratory
- Limno-Tech, Inc.
- The New Center
- Resource Recycling Systems
- SmithGroup JJR
- Tilton & Associates, Inc.
- Ypsilanti Community Utilities Authority

In addition, fifteen prospective Partners are currently in the works.

[Stormwater Pollution Prevention Tip of the Month](#)

Water Conservation

What you plant in your landscaped areas makes a difference when it comes to water conservation. Native plant species require less water and are more tolerant of dry conditions.

How you design and maintain your landscaped areas also affects watering needs. Mulching is one of the simplest and most beneficial practices you can implement in landscaped areas. Using mulch retains moisture and thus reduces the need for frequent watering. In addition to water conservation, mulch protects the soil from erosion, prevents weed growth, and helps to maintain a more stable temperature environment.

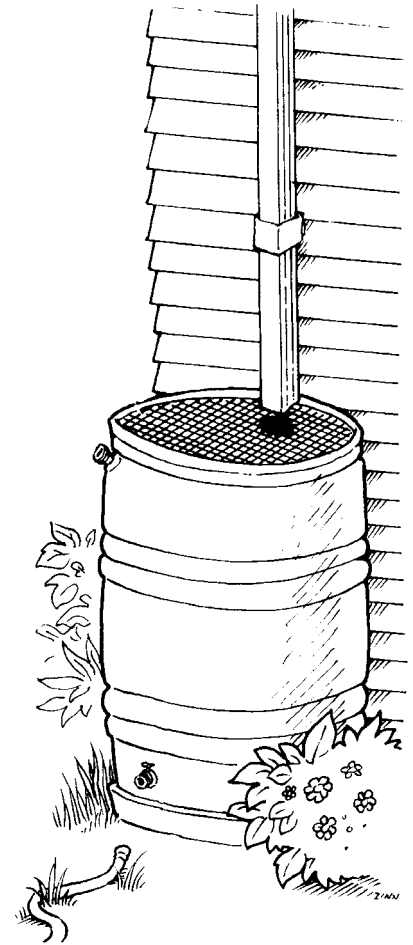
With careful selection of plantings, watering may not be necessary, but if you decide irrigation is needed, be sure to water in the early morning before the sun is intense. This practice helps to reduce the amount of water lost from evaporation.

If you have an automatic sprinkler system, consider installing a rain sensor that turns the system off during a rain event. These devices are inexpensive and can save money on your monthly water bill.

Drip irrigation is another effective way to save water and money and still meet the water needs of your plants. With drip irrigation, small amount of water are supplied directly to the base of plants, where the water is needed. When water is sprayed, much of the water is lost to evaporation from the leaf surface of plants.

A rain barrel is an additional simple way to conserve water. Rain barrels collect rainfall from the roof and store it for when irrigation is needed. Rainwater can also be a better alternative for plants than municipal or well water because it is neither chlorinated or fluorinated, nor does it contain high concentrations of dissolved salts.

If you have any questions about water conservation or would like more information about native plants, drip irrigation, rain barrels, or rain sensors, please do not hesitate to contact our office.



Rain Barrel

[CPCS Events](#)

- **Huron River Days** – July 11th Gallup Park

[Subscribe](#)

If you would prefer not to receive the monthly eMonitor, simply respond to this email with the word “unsubscribe” in the subject line or body of the text.

[Contact Us](#)

Community Partners for Clean Streams

705 N. Zeeb Road, PO Box 8645

Ann Arbor, MI 48107-8645

Michelle J. Bononi, Environmental Planner (734) 222 – 6833 bononim@ewashtenaw.org

Or

Liza Liversedge, Environmental Planning Intern (734) 222 – 6813

liversedgel@ewashtenaw.org

http://www.ewashtenaw.org/government/drain_commissioner/dc_cpcs.html

