

Community Partners for Clean Streams Monthly eMonitor



Volume 1, Number 8



September 2004 Issue

*A Publication of the Washtenaw County Drain Commissioner's Office
Janis A. Bobrin, Drain Commissioner*

In This Month's eMonitor

Up Front:	Welcome to the Community Partners Monthly eMonitor
Topic of the Month:	Dumping is Illegal – New Brochure
CPCS News	New and Renewed Partners
Tip of the Month:	Managing Trash
CPCS Events:	Environmental Excellence Awards

Up Front

Welcome to the Community Partners for Clean Stream Monthly eMonitor

The eMonitor is designed to keep Partners updated on CPCS and stormwater management issues, provide helpful information to reduce stormwater and nonpoint source pollution, recognize new Partners, highlight upcoming events, and allow increased networking opportunities. We hope you enjoy each edition of the Monthly eMonitor and welcome any comments, concerns, or suggestions.

Dumping is Illegal



Keep waste where it belongs

http://www.ewashtenaw.org/government/drain_commissioner/dc_cpcs.html/dc_cpcs_dumpingillegalbrochure.pdf

Has your site ever been a dumping “victim”? Ever wondered what dumping is or what to do if you witness dumping? A new brochure produced by the Washtenaw County Drain Commissioner's Office and Washtenaw County Planning and Environment has been created to address dumping issues in Washtenaw County. Take a look at this straightforward brochure to answer questions about dumping, and use this brochure as an educational or training resource.

For more information or for hard copies of the brochure, please contact us at (734) 222-6833 or (734) 222-6813.

[CPCS News](#)

CPCS Participant List

For a listing of current **87** community Partners, see our webpage at

http://www.ewashtenaw.org/government/drain_commissioner/cpcs_participantlist_9_04.pdf

New and Renewed Partners

CPCS recognizes the following **new** Partnerships:

- Cleary University
- Daycroft Montessori School
- Howard Cooper, Inc.
- Nichols Arboretum

CPCS recognizes the following **renewed** Partnerships for a 3 year term:

- Charter Township of Ypsilanti
- Geddes Lakes Condominium Association
- Pfizer Global Research and Development
- Toyota Technical Center

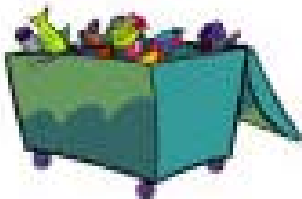
In addition, fifteen prospective Partners are currently in the works.

[Stormwater Pollution Prevention Tip of the Month](#)

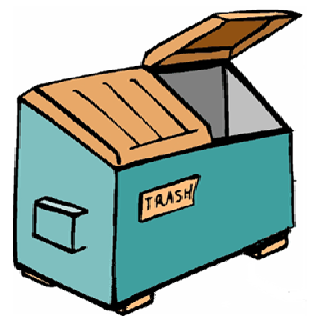
Managing Trash

Outdoor trash containers can be a common source of pollution. Outdoor containers should be regularly maintained and repaired to avoid leaks.

If materials and wastes overflow a receptacle or are placed on the ground, pollutants can leak from waste stockpiles or containers. Pollutants leaked onto the ground can be washed into rivers, lakes, and streams during rain events.



Trash containers should be in good condition, lined with a material that will not deteriorate, and have lids to keep rain water out. Liquid waste should never be placed in a trash container. To avoid polluting waterways, regularly clean up areas around trash containers and inspect containers for leaks. If a leak is detected, repair or replace the container immediately.



CPCS Events

- **Environmental Excellence Awards**
Board of Commissioners Meeting, September 22, 2004
(See next month's edition of the eMonitor)

Subscribe

If you would prefer not to receive the monthly eMonitor, simply respond to this email with the word "unsubscribe" in the subject line or body of the text.

Contact Us

Community Partners for Clean Streams

705 N. Zeeb Road, PO Box 8645
Ann Arbor, MI 48107-8645

Michelle J. Bononi, Environmental Planner (734) 222 – 6833 bononim@ewashtenaw.org
Or

Liza Liversedge, Environmental Planning Intern (734) 222 – 6813
liversedgel@ewashtenaw.org

http://www.ewashtenaw.org/government/drain_commissioner/dc_cpcs.html

