

WCPP APPLICATION

Last Name: _____

First Name: _____ M.I. _____

Social Security #: _____

Address: _____

Apt. #: _____ City: _____

MI Zip Code: _____

County: **WASHTENAW**

Home Phone: _____

Birthdate: _____ Sex: Male

Female

Race/Ethnicity (optional):

American Indian/Alaska Native White

Asian/Pacific Islander Spanish/Hispanic

Black/African American Other

Number of People in Household: _____

Monthly Household Income: *(optional will not effect eligibility)*

Less than \$1,750 \$3,701 to \$4,300

\$1,750 to \$2,400 \$4,301 to \$5,000

\$2,401 to \$3,000 Over \$5,000

\$3,001 to \$3,700

Health Insurance: *(optional will not effect eligibility)*

Uninsured Private Insurance WHP

Medicare Medicaid/Other Public Insurance

How did you hear about the program?

I understand that my enrollment information above will be kept confidential. I authorize the Washtenaw Health Plan to share information with 4-D in order to verify my eligibility and manage my participation.

Signature: _____ Date: _____

Provide email address, if you'd like email confirmation:

ENROLL BY MAIL, FAX, INTERNET OR PHONE

Washtenaw Health Plan/WCPP

555 Towner Street, Attn: Jean Amador

Ypsilanti, MI 48197-0915

PHONE: 734-544-6886; FAX: 734-544-6704

<http://whp.ewashtenaw.org>

Washtenaw County Prescription Plan
555 Towner Street
PO Box 0915
Ypsilanti, MI 48197-0915



WASHTENAW COUNTY PRESCRIPTION PLAN (WCPP)



SPONSORED BY
**WASHTENAW COUNTY
AND
WASHTENAW HEALTH PLAN**



Toll-Free: 1-866-291-8691

WHP: (734) 544-3030

WCPP: (734) 544-6886

FAX: (734) 544-6775

Web: <http://whp.ewashtenaw.org>

WHAT IS THE WASHTENAW COUNTY PRESCRIPTION PLAN?

The Washtenaw County Prescription Plan (WCPP) is a way for people who live in Washtenaw County to get medicines for less.

WHO IS ELIGIBLE?

To be eligible for the WCPP you must:



- Live in Washtenaw County
- Have limited or no prescription coverage

There are no income or age restrictions.

HOW DOES IT WORK?

You will get a WCPP discount card to use at the pharmacy when you fill your prescription. The pharmacy will charge you the discounted price. The amount depends on the drug. **Note: You will be expected to pay for the medicine at the discounted price.**

ALWAYS present your card to the pharmacist even with prescription refills.

HOW MUCH CAN I SAVE?

Your discount will range between 15-50% depending on the prescription and the pharmacy where it is purchased.

WHAT DOES IT COVER?

The discount is good on any prescription drug the pharmacy stocks and your doctor prescribes. Over-the-Counter drugs are not covered, even if your doctor prescribes them.

DOES IT COST ANYTHING?

Enrollment is FREE. You will be expected to pay the discounted price of the prescription to the pharmacy.

WHY SHOULD I USE WCPP?

If you don't have a prescription drug benefits you have to pay the full cost of the drugs you need at prices set by the pharmacy. WHP works with 4-D, a pharmacy benefits manager, which has negotiated discounted prices. The WCPP card lets you buy medications at these negotiated discounts, rather than at the full cost.

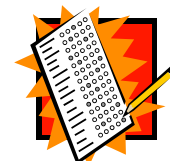
WHO SPONSORS WCPP?

The program is sponsored by the Washtenaw County Board of Commissioners and the Washtenaw Health Plan (WHP). The WHP is a non-profit corporation that promotes and develops health coverage programs for uninsured and under-insured residents in Washtenaw County.

HOW CAN I GET A WCPP CARD?

Here's how to enroll in the WCPP:

- 1. FILL OUT THE APPLICATION AND BRING OR MAIL TO:**
Washtenaw Health Plan/WCPP
555 Towner Street
Attn: Jean Amador
Ypsilanti, MI 48197
- 2. FILL OUT THE APPLICATION & FAX TO:**
Jean Amador, WHP/WCPP
FAX: 734-544-6704
- 3. APPLY OVER THE PHONE:**
Jean Amador, WHP/WCPP
PHONE: 734-544-6886
- 4. APPLY ON LINE:**
Follow the links on
<http://whp.ewashtenaw.org>



Note: Each family member must apply separately.



You will receive your card within 2-3 weeks by mail along with a list of participating pharmacies.