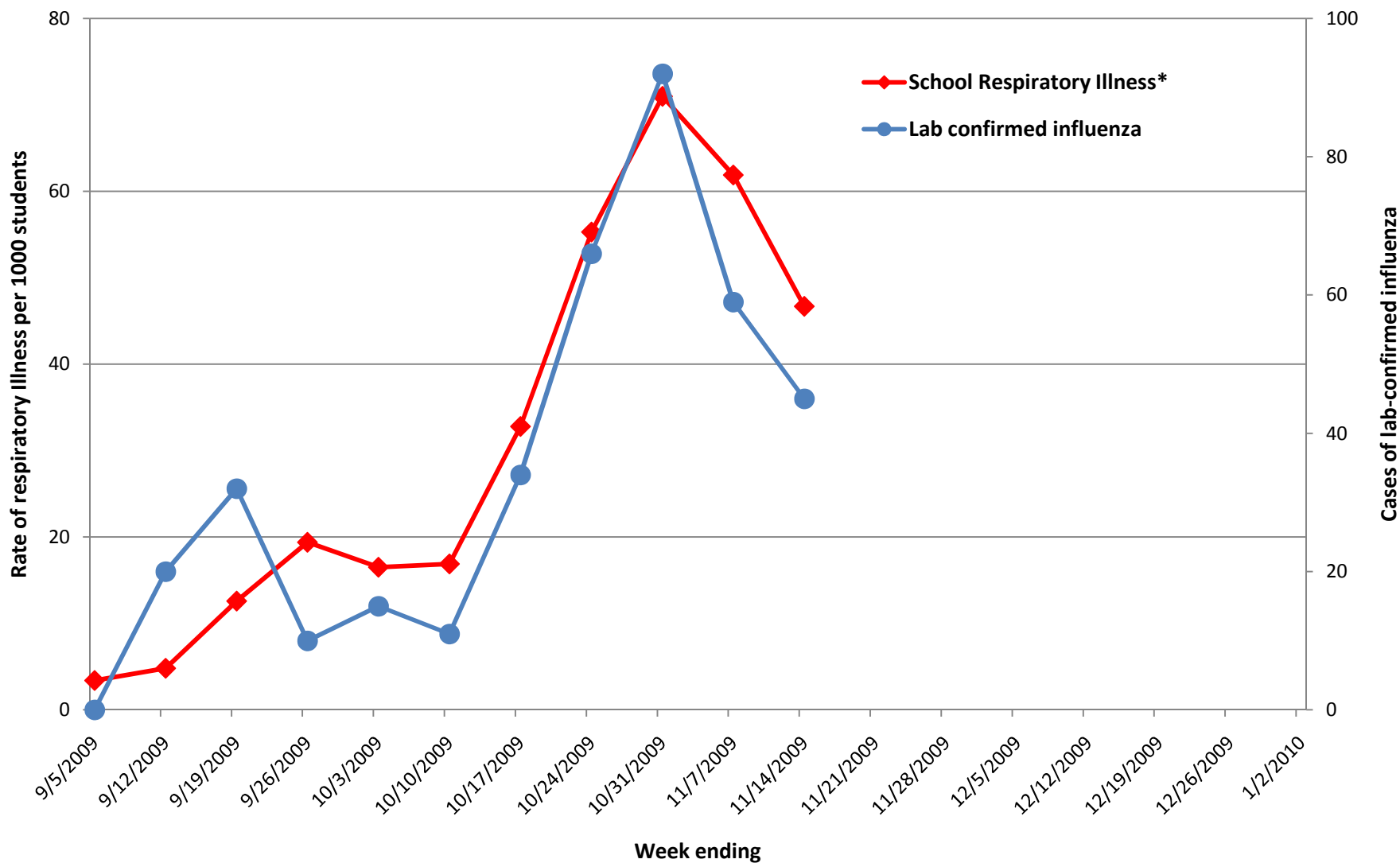


Respiratory Illness Rate in Washtenaw Schools and Childcares and Lab-Confirmed Influenza (Seasonal and H1N1) in Washtenaw Residents 2009 - 2010 Influenza Season



*Respiratory illness: "Student with fever or pneumonia AND any of the following symptoms: sore throat, cough, generalized aching in the muscles of the arms/legs/back." These numbers are based on parent reports of their child's illness.