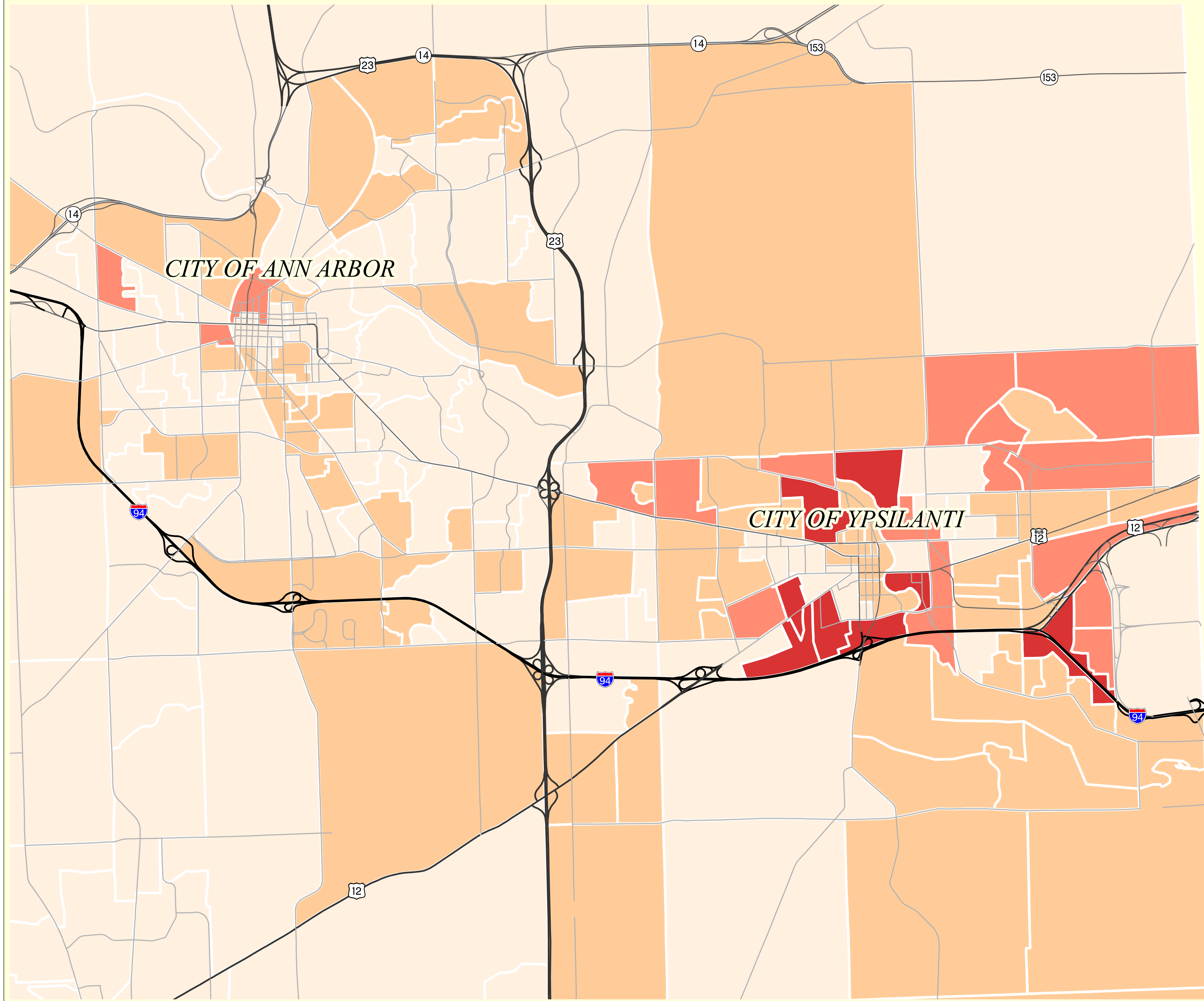


2004 Reported Gonorrhea Cases in Ann Arbor - Ypsilanti Area

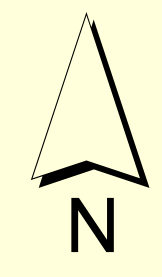
All Ages -- Using Census Block Groups



# of Gonorrhea cases per 1,000 people	# of Census Block Groups per category
0	149
.1 - 2.5	85
2.6 - 5	17
5.1 - 10	9
Total Number of Block Groups in County	260

- Census Block Group
- Interstate Freeway
- US Highway
- State Route
- Primary Paved Road

# of Gonorrhea Cases in Entire County (all ages)	2002	2003	2004
Male	106	74	98
Female	129	118	166
TOTAL	234	192	264



Map Prepared By
Washtenaw County GIS
05/09/05

