

# WASHTENAW COUNTY PRAMS PROJECT, CIMR AND HIP

Ruth Kraut

[krautr@ewashtenaw.org](mailto:krautr@ewashtenaw.org)

(734)544-3068

# What Is The PRAMS Survey?

- Pregnancy Risk Assessment and Monitoring Systems Survey
- CDC collaboration with state health departments
- Goal: Identify pregnancy risks with an eye to being able to reduce them

# PRAMS Survey Questions

- Breastfeeding
- Sleeping/Co-sleeping
- Intendedness of Pregnancy
- Contraception
- Abuse
- Stress
- Post-partum depression
- Race and Ethnicity
- Economics
- Education
- Racism
- Health Insurance
- Smoking
- Drinking
- Oral Health

# Washtenaw County PRAMS

- Used State of Michigan PRAMS Questionnaire
- Followed State PRAMS Survey protocols (mixed mail/phone sample) with one fewer mailing
- Worked with state to develop Washtenaw sample
- IRB-approved research project
- Oversampled LBW births, births to women of color (why? Sample size)

# Today: Intendedness

- Question: Thinking back to just before you got pregnant, how did you feel about becoming pregnant?
  - I wanted to be pregnant sooner
  - I wanted to be pregnant later **Mistimed**
  - I wanted to be pregnant then
  - I didn't want to be pregnant then or at any time in the future **Unwanted**

## National surveys say that unplanned pregnancies....

- May influence women's behaviors prior to and during pregnancy (i.e. smoking, drinking, folic acid)
- May influence access to care
- May affect behaviors after pregnancy (less likely to breastfeed)
- Are more likely to end in low birth weight/preterm births

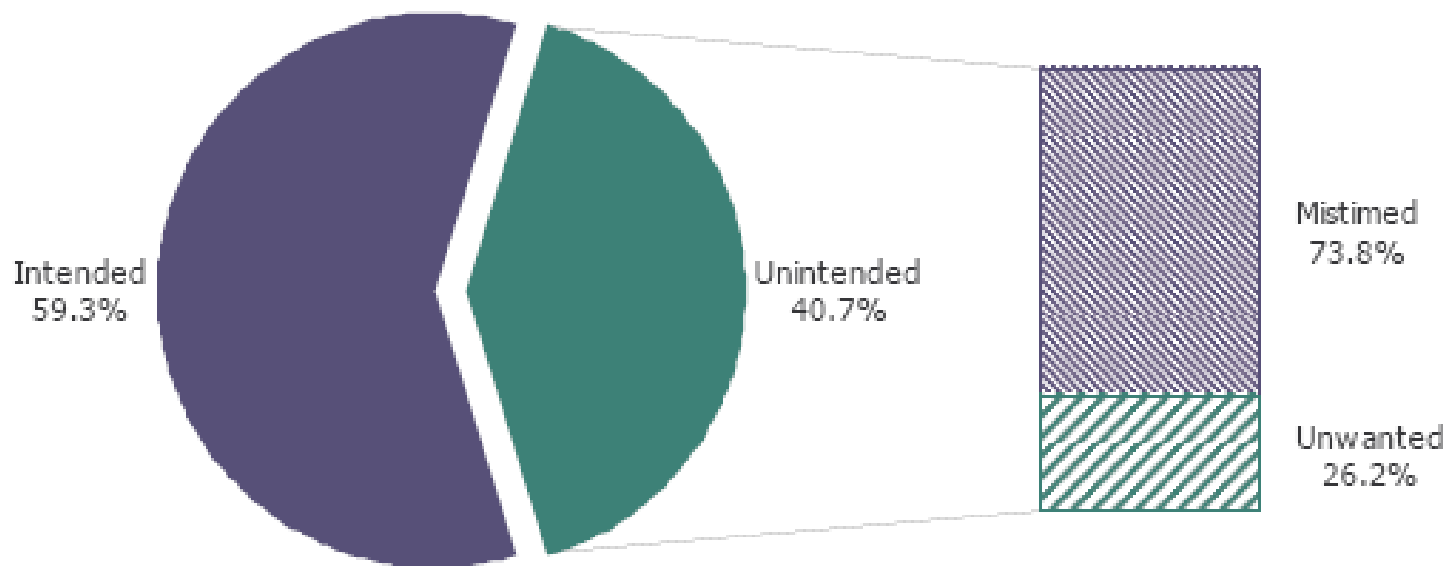
# Birthweight and Intendedness

| Birthweight  | Intended   | Unintended | Intended % | Unintended % |
|--------------|------------|------------|------------|--------------|
| under 1500 g | 0          | 4          | 0.0%       | 3.5%         |
| 1500-2499 g  | 6          | 3          | 2.9%       | 2.6%         |
| 2500-4099 g  | 188        | 98         | 90.0%      | 85.2%        |
| 4100+ g      | 15         | 10         | 7.2%       | 8.7%         |
| <b>TOTAL</b> | <b>209</b> | <b>115</b> |            |              |

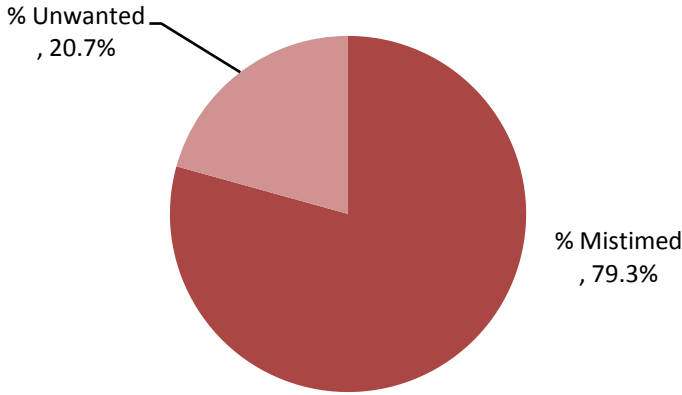
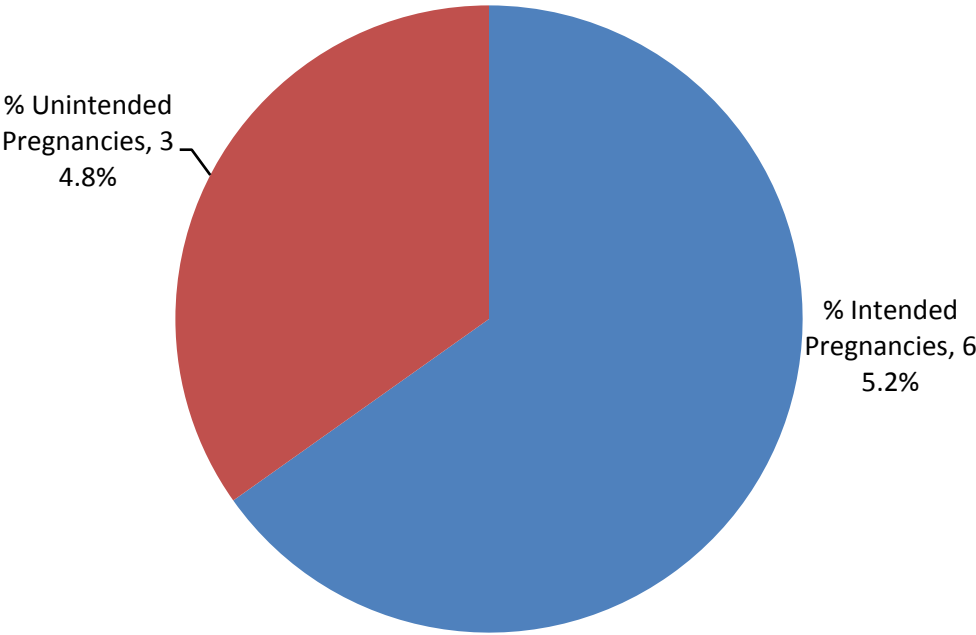
# Intended and Unintended: Michigan

Figure 6:

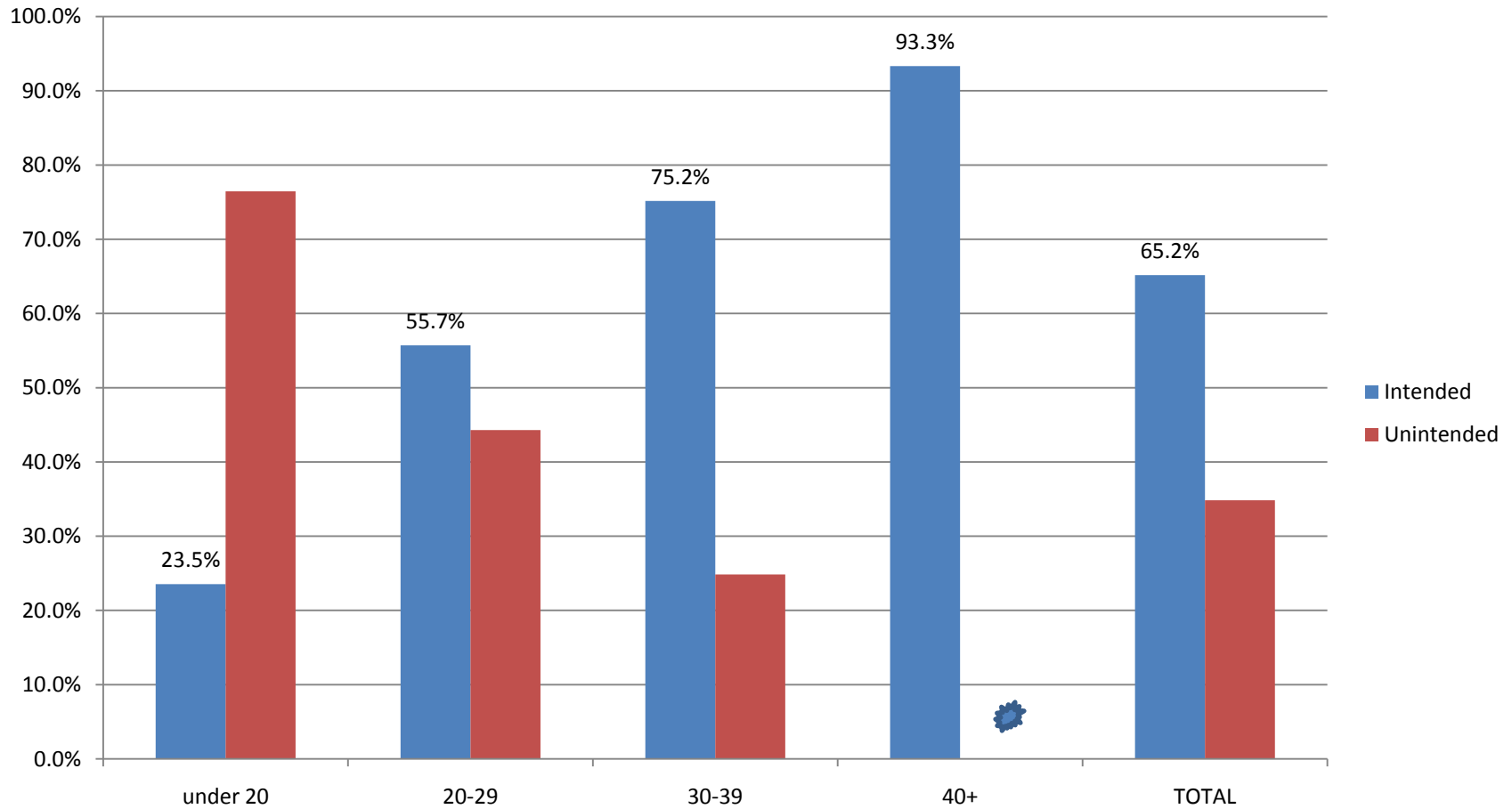
Prevalence of intended and unintended pregnancies and types of unintended pregnancies,  
2006 MI PRAMS



# Intended and Unintended: Washtenaw

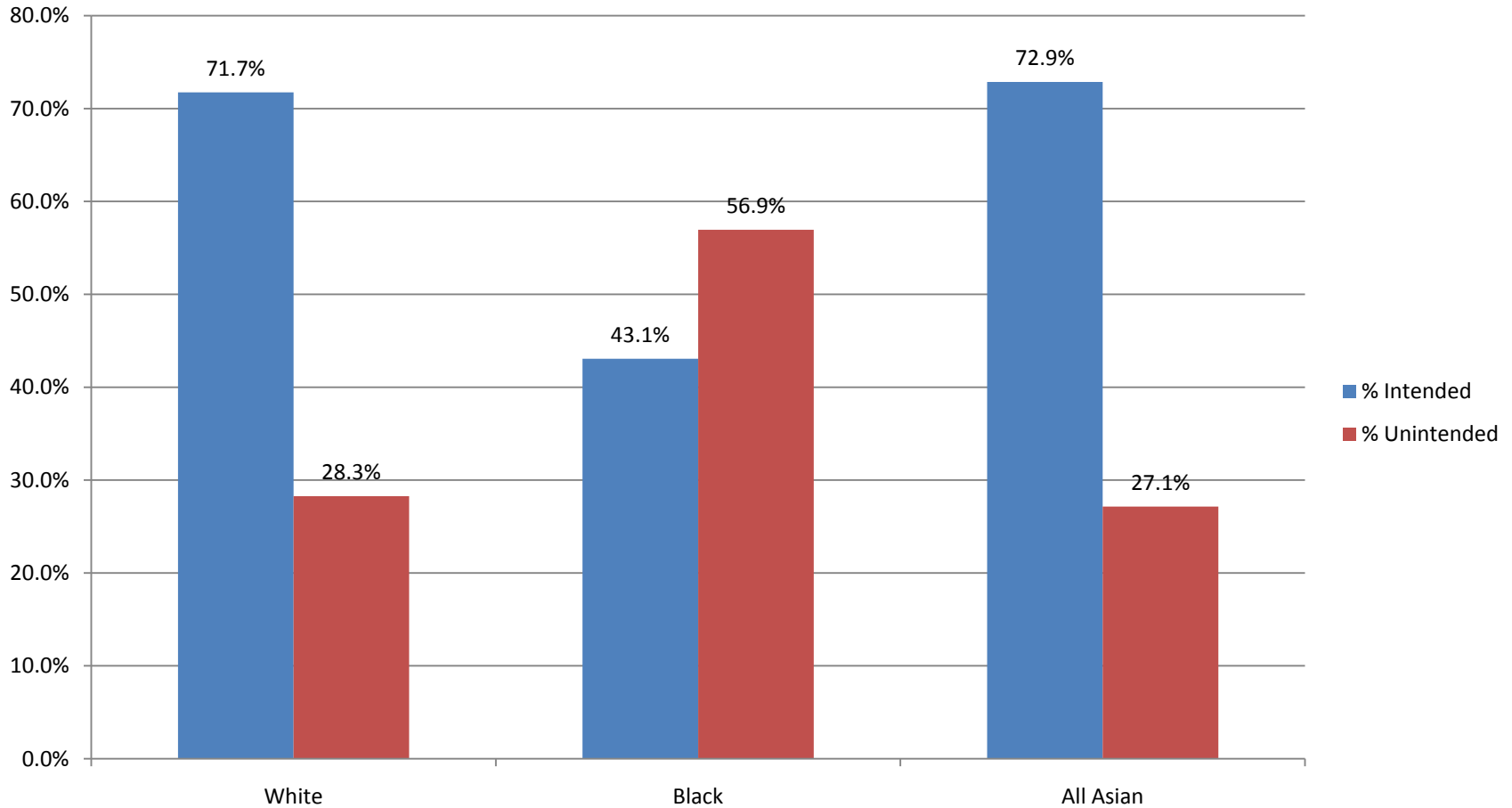


# Intendedness and Age



Over 40 sample size too small; Washtenaw PRAMS

# Intendedness and Race of Mother



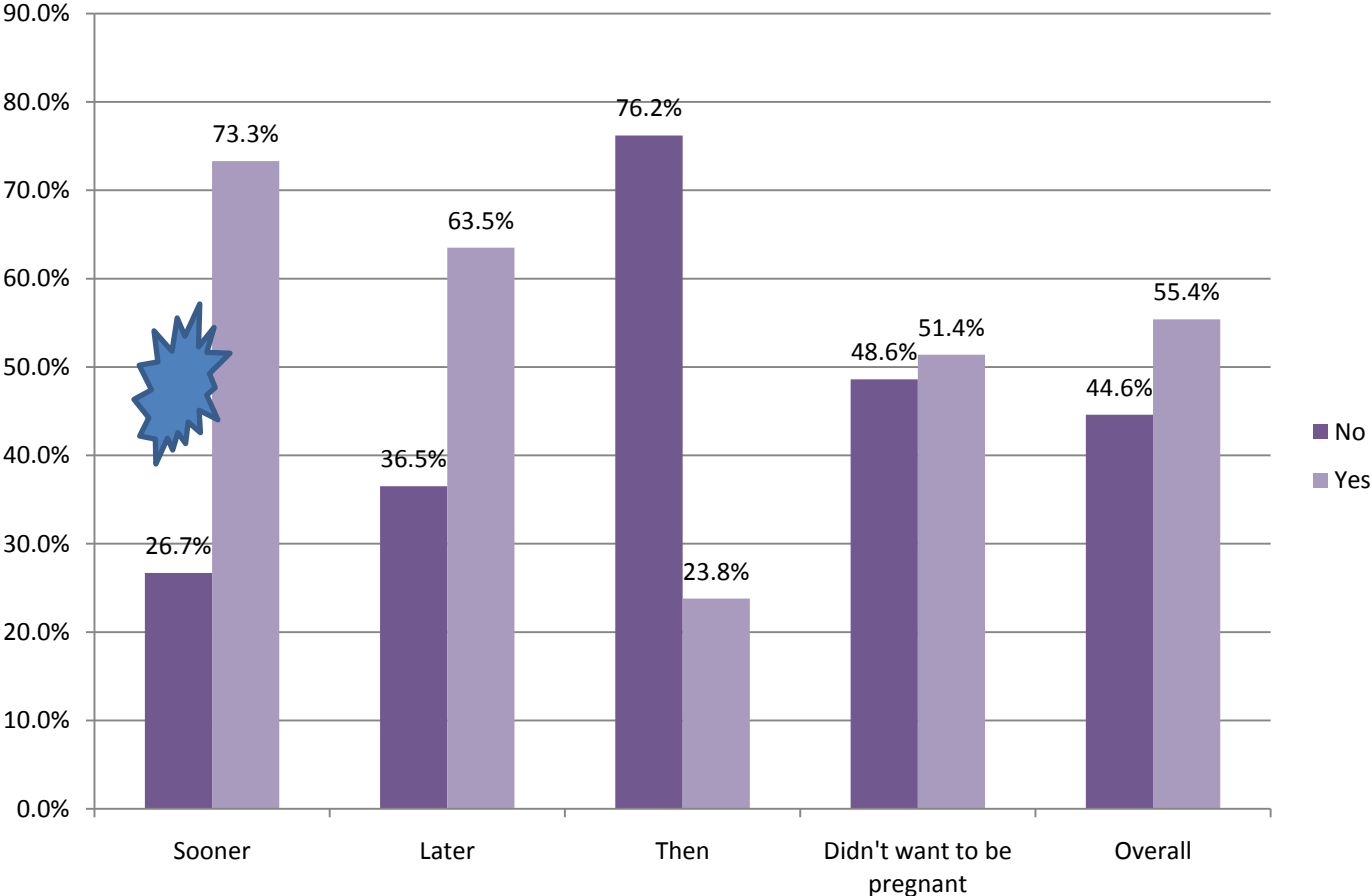
Sample size too small for All Others and Unknown Race of Mother;  
Washtenaw County PRAMS

# Intendedness and Source of Payment (Medicaid)

| <u>Delivery Paid</u><br>By Medicaid | Sooner | Later | Then  | Didn't want to be<br>pregnant |
|-------------------------------------|--------|-------|-------|-------------------------------|
| No                                  | 86.1%  | 54.3% | 85.5% | 46.2%                         |
| Yes                                 | 13.9%  | 45.7% | 14.5% | 53.8%                         |

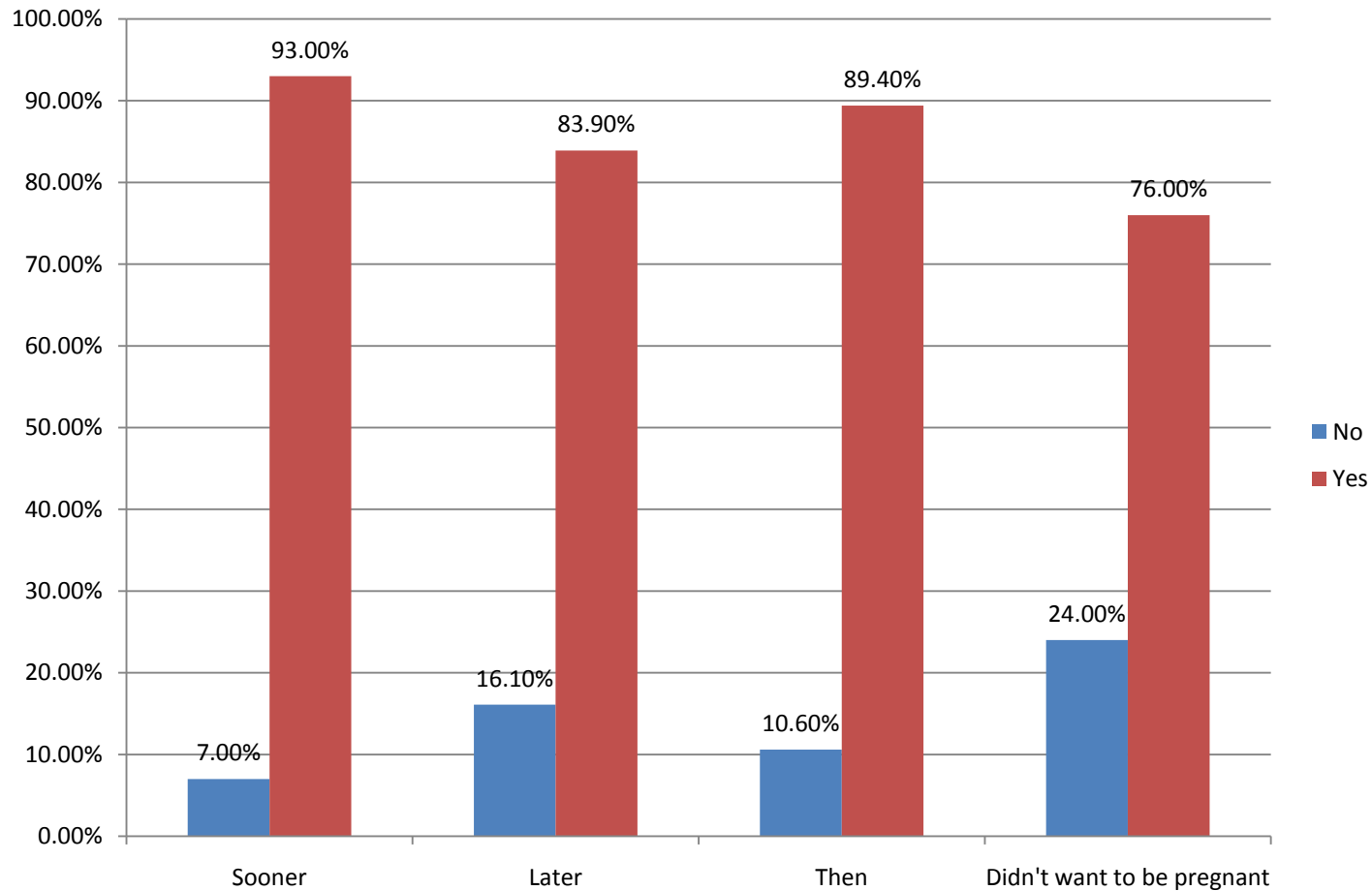
Of prenatal care paid by Medicaid, 62.8% of the pregnancies were unintended. Washtenaw County PRAMS.

# Intendedness and Birth Control



Small sample size for “Sooner;” Washtenaw County PRAMS

# Intendedness and Ever Planned On Breastfeeding



# HIP Working Group: Why Intendedness?

- Data Driven: Planned Pregnancies and the Relationship to Birth Outcomes
- Multi-level: Opportunities with individuals, with providers, with systems
- Resources: Plan First!
- Investigation of Grant Possibilities

# Policy Thoughts

## Closing the Black-White Gap in Birth Outcomes: A 12-Point Plan

- 1. Provide interconception care to women with prior adverse pregnancy outcomes**
- 2. Increase access to preconception care for African American women**
- 3. Improve the quality of prenatal care**
- 4. Expand healthcare access over the life course**
- 5. Strengthen father involvement in African American families**
- 6. Enhance service coordination and systems integration**
- 7. Create reproductive social capital in African American communities**
- 8. Invest in community building and urban renewal**
- 9. Close the education gap**
- 10. Reduce poverty among Black families**
- 11. Support working mothers and families**
- 12. Undo racism**

Lu MC, Kotelchuck M, Hogan V, Jones L, Jones C, Halfon N. Closing the Black-White gap in birth outcomes: A life-course approach. *Ethnicity and Disease* Forthcoming in 2008.