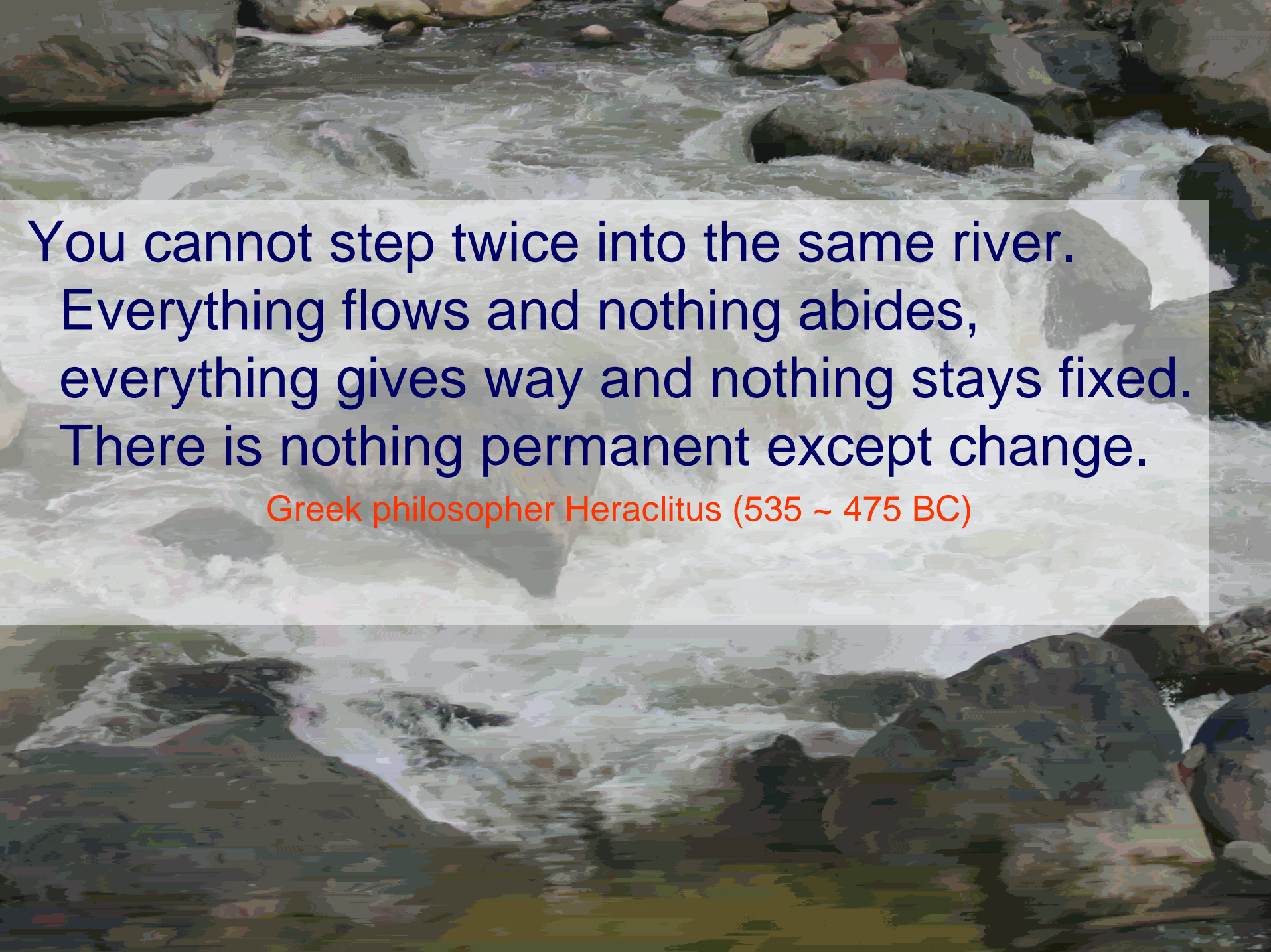


HIPped; Still HIPping; Will HIP...

**Past, present and future of Community
Health Improvement in Washtenaw County**

*Adreanne Waller, MPH
Washtenaw County Public Health
September 12, 2005*

A photograph of a river with white water rapids flowing over dark, jagged rocks. The water is turbulent and foamy. A semi-transparent white rectangular box is overlaid on the center of the image, containing text in blue and orange colors.

You cannot step twice into the same river.
Everything flows and nothing abides,
everything gives way and nothing stays fixed.
There is nothing permanent except change.

Greek philosopher Heraclitus (535 ~ 475 BC)

Outline

- Progress on HIP objectives: 1995-2004
- HIP timeline: 2005-2006
- HIP 2005 Survey
- Washtenaw County's Demographic 'River'
- HIP's response in the coming Decade

HIP Progress – 1995-2004

- Original objective targets for 2005
- Two data points for survey based objectives
- Averages from 1995-1999 compared to 2000 to most current data year
- only new, comparable data
- Excludes kids ATOD, prostate cancer screening, ER visits for asthma and child abuse injuries and 'runoff contaminants'
- Progress does not indicate disparities

HIP Progress – 1995-2004

- Overall progress – 69% moving in right direction – 🍎
- Healthy Kids – 44% right direction 🍎
- Healthy Adults – 61% right direction 🍎
- Healthy Environment – 100% right direction 🍎
- Safe Communities – 100% right direction 🍎

HIP Progress – 1995-2004

- Overall progress – 69% moving in right direction – 👍
- **Healthy Kids** – 44% right direction 👍
- Healthy Adults – 61% right direction 👍
- Healthy Environment – 100% right direction 👍
- Safe Communities – 100% right direction 👍

56% in wrong direction?

"Failure is an orphan,
success has many
fathers."

Anonymous

Other measures of success...the softer side of HIP

- **'Data' are numbers, they are also people, discussions, revelations, group experience, relationships**
- Increased awareness of individuals and agencies passions and priorities
- Individuals' passions and priorities often rise above even their agencies ambitious mission and vision statements
- Adopting others' passions and priorities into our mission statements
- Unified front

HIP 2005-2006 Timeline

- HIP 2005 Survey – October – January 2006
- Spring 2006 – Survey results
- Summer 2006 – review survey results
- Fall/Winter 2006– review and recommend HIP objectives for coming decade

Don't Hang Up...on the HIP Survey

- Phone survey October 2005
- Michigan State University
- Behaviors, health status, access, sociodemographics, basic needs
- Caller ID
- New survey topics this year: disability, emotional support, neighborhood walkability, biking, intimate partner violence
- Supported by Washtenaw County, Chelsea Community Hospital, University of Michigan Hospitals, Saint Joseph Mercy Hospital, Pfizer, United Way

Washtenaw County Demographic 'River'

Comparing 1970 census to 2000 census



- Imagine our whole county represented by ten people...

Total Population – 1970 compared to 2000



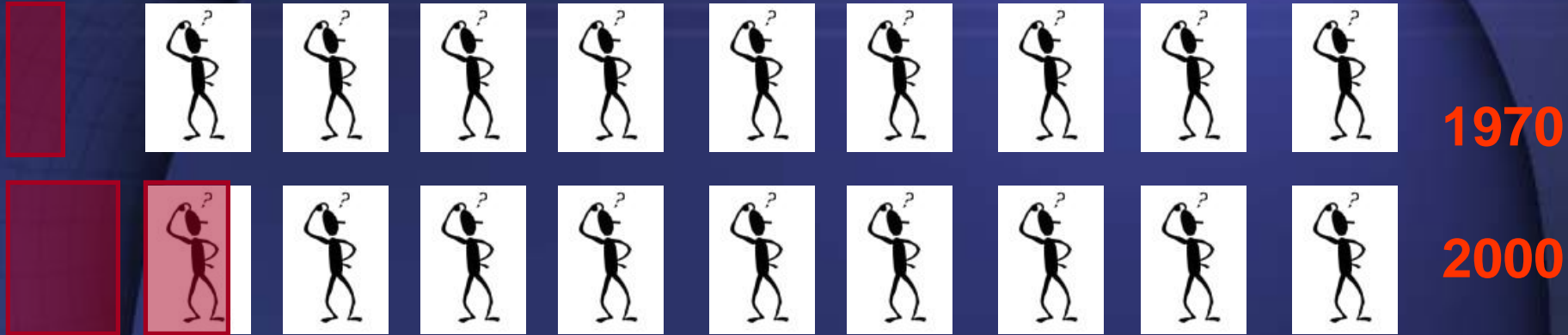
1970



2000

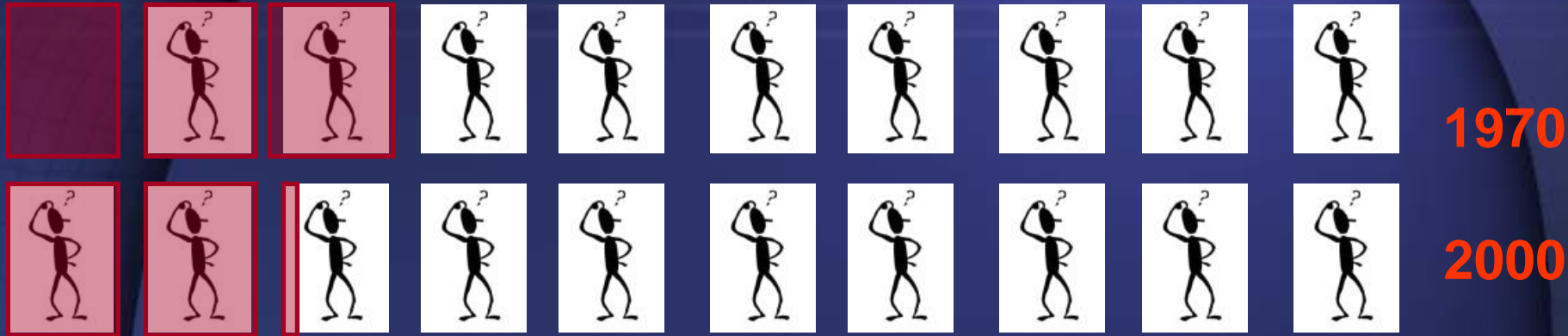
- There was only six of us in 1970.
- Washtenaw County repeatedly lauded as excellent place to live and work
 - Diversity
 - Creative community
 - Academic community

Aging – 1970 compared to 2000



- In 2000, nearly two of us were 65 years or older (compared to .5 in 1970)
- 25% increase in actual numbers just between 1990-2000

Children



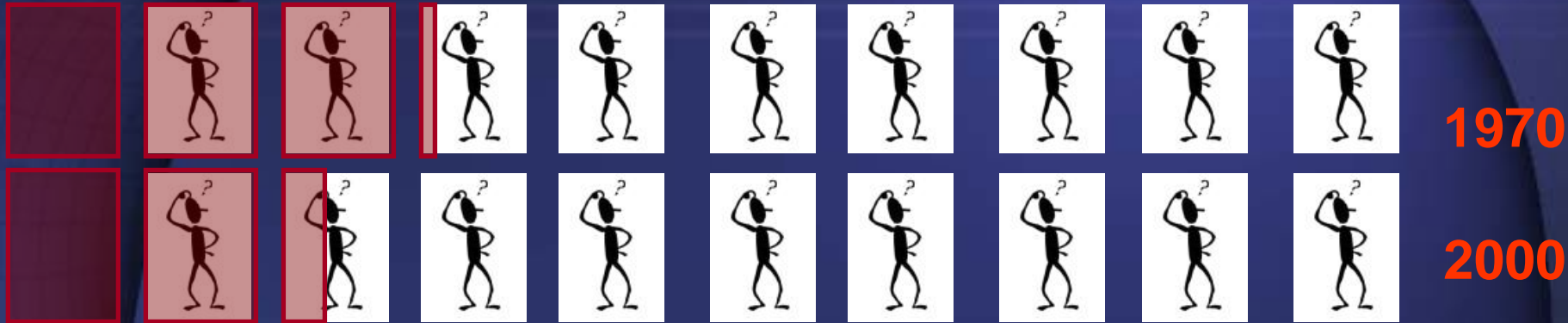
- 22% of 2000 population, nearly a third decrease since 1970
- 3300 Low birth weight babies born in past decade
- Washtenaw highest birth defect rate in Michigan

Racial Composition – 1970 compared to 2000



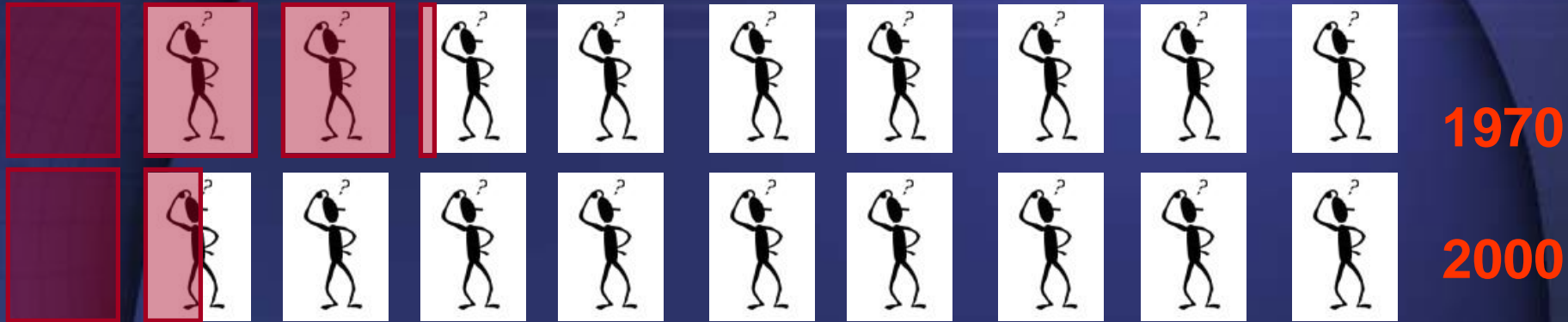
- White population decreased
- Proportion of Black population increased by 58%
- Proportion of 'Other' races increased ten-fold

Household Composition – 1970 compared to 2000



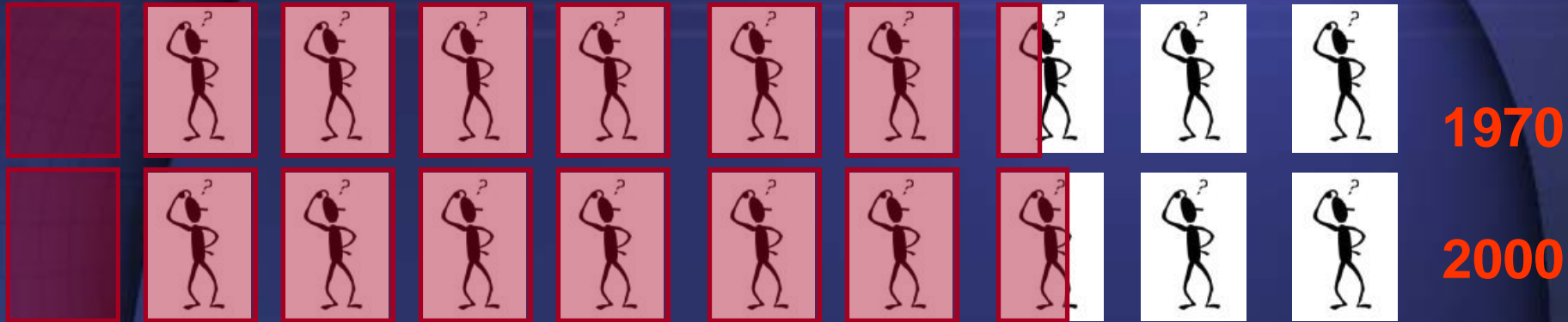
- Average number of persons per household decreased 21%
- more single-headed households
- Fewer children per household
- More elderly living alone
- More housing units

Manufacturing Employment – 1970 compared to 2000



- Proportion in manufacturing employment decreased by half (32% in 1970 to 15% in 2000)

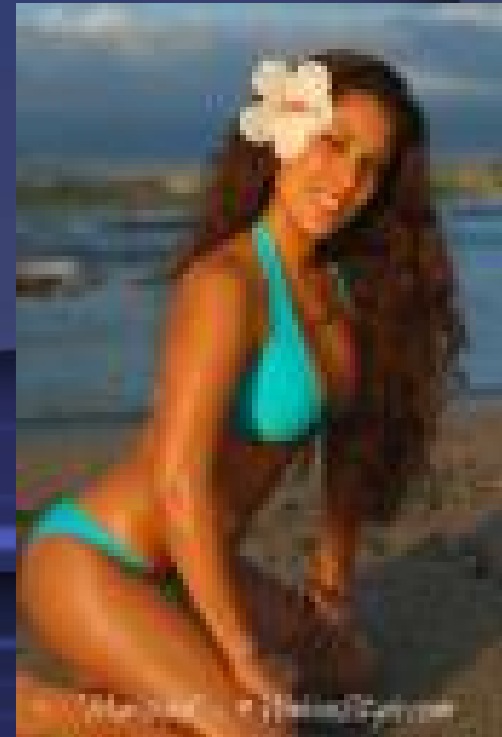
Commuting to Work Alone – 1990 compared to 2000



- Proportion driving to work alone increased
- Proportion walking to work decreased

“Statistics are like bikinis.
What they reveal is suggestive
but what they conceal is vital.”

anonymous



The HIP Response in the coming Decade – *opportunities*


- Decreasing employer-based health insurance,
- Increasing need for environmental and policy approaches
- aging and disabled population, including implications of more isolated living conditions
- Increasing economic, educational, legal, familial and health care attention to ‘special needs’ kids

The HIP Response in the coming Decade – *opportunities*

- Ethnic, racial, and linguistic diversity
- Need to continue to be conduit for ‘science to service’
- Swelling demands regarding mental illness and substance abuse

The HIP Response in the coming Decade – *opportunities*

- Major focus – identifying and addressing disparities
- As reflected in the HIP objectives, these include very **basic** issues like:
 - Immunizations
 - Transmitting infectious disease like HIV or chlamydia
 - Access to healthy food and opportunities for physical activity
 - Preventing chronic disease that results in loss of productivity and quality of life
 - Clean indoor and outdoor air
 - Primary and prenatal medical care
 - Healthy start for infants
- **Social justice**



“The best thing about the future is that it only comes one day at a time.”

Abraham Lincoln