

# ALL-HAZARD EMERGENCY RESPONSE PLAN OVERVIEW

Volunteer Emergency Response  
Training



## Learning Objectives

- ▣ What it is and who it serves
- ▣ Identify major components
- ▣ Recognize authorities and assigned personnel

## What is the WCPH All-Hazard Emergency Response Plan?



- ▣ A coordinated effort that:
  - ▣ Protects health, prevents disease, injury, or death of citizens

A comprehensive plan that is updated regularly.

When is the best time to create an emergency plan? Answer: when things are calm and we can consider the “what if’s”.

We create our plans during a non emergency. We communicate with other health organizations or communities and learn from their experiences. We also share what we learn from OUR experiences.

We regularly make improvements and updates to the plans.

All staff, especially emergency response staff, will have an understanding of basic plans, authorities, incident command and communication procedures.

WCPH= Washtenaw County Public Health

## Accomplished By:

1. Assigning responsibility to organizations and individuals
2. Establishes lines of authority and organizational relationships
3. Describes how people and property will be protected
4. Identifies resources available
5. Identifies steps to address mitigation concerns
6. Cites its legal basis, states its objectives, and acknowledges assumptions.

1. Assigns responsibility to organizations and individuals for carrying out specific actions at projected times and places. If the emergency exceeds the capability or routine responsibility of an agency, e.g., the fire department.
2. Establishes lines of authority and organizational relationships, and shows how all actions will be coordinated.
3. Describes how people and property will be protected in emergencies and disasters.
4. Identifies resources such as personnel, equipment, facilities, supplies, and other resources available--within the jurisdiction or by agreement with other jurisdictions--for use during response and recovery operations.
5. How to lessen the emergency

## Emergencies

- ▣ Natural – severe weather (heat & cold), tornadoes, epidemic (flu)
- ▣ Man made – terrorism, hazmat, airplane crash, train derailment
- ▣ Both - fire



We have the All Hazard plan for various emergencies.

## Emergency Situations

- ❑ Long term loss of utilities
- ❑ Disruption of food &/or water supply
- ❑ Property damage to homes and businesses (via floods, storms, etc.)
- ❑ Epidemics



Example of black out in 2003.

## Major Areas the WCPH Considers When Planning:

- Direction Control/Incident Management
- Communications
- Surveillance
- Laboratory
- Community Containment/Infection Control
- Medical Management/Surge Capacity
- Data Management
- Border/Travel Health
- Mental Health Response
- Recovery and Consequence Management
- Training, Planning and Evaluation
- Job Action Sheets
- Fact Sheets, Annexes and Appendices

These are the major areas the WCHD has addressed in our Emergency Preparedness plans.

Direction Control/Incident Management – delineation of authority.

Communications - Describes the roles, lines of responsibilities and resources necessary to communicate with the public, media and local response partners. We will use the MIHAN system to contact our Volunteers

Surveillance - Communicable disease surveillance in place. We communicate with local and staff Epidemiologists

Laboratory: no independent lab in the county. WCPH enlists services of the MDCH Bureau of Laboratories.  
Environmental specimens, sampling, or toxic spills

Community Containment: Isolation and infection control policies.

Medical Management/Surge Capacity – MEMS Address gap in casualty and victim care resources that would exist in most jurisdictions with a large number of casualties

Data Management- includes: Tracking of Staff, Volunteers and Resources

Border/Travel Health - State and local laws and regulations vary greatly. Federal government has authority under Commerce Clause. WCPH must restrict movement of persons and/or prescribe measures to prevent the spread of infectious disease.

Mental Health Response – psychological 1<sup>st</sup> aid

Recovery and Consequence Management – continuity of operations

Training, Planning and Evaluation – Includes after action reports and corrective action plans. One major training exercise per year.

Job Action sheets – Joel will talk about these later.

Fact Sheets: Information for the Public and Medical Care Providers about Anthrax, Botulism, Chlorine, Cyanide, Plague, Ricin, Sarin, SARS, Smallpox, Tularemia

Our goal is to find areas within these sections to make the best use of our volunteers' time and talents.

## WCPH Responsibility:

- ▣ To detect, investigate, respond and prevent injury, illness, and death.
- ▣ How is this accomplished?
  - Rapid communication of essential information
  - Mass distribution of vaccines or prophylactic medicines
  - Assurance of environment



This is accomplished through flexibility, leadership and collaboration.

# ABOUT THE COUNTY

Who We Serve

## Washtenaw County Demographics

- Estimated population 349,021
- 721 square miles



Some of you may be new to the area so we thought a description of Washtenaw might be helpful.

350,000 residents

Also consider the thousands of students that don't have permanent residence in the county and those that enter the county to work. There are also large events (UM Football games, Ann Arbor Art Fair) when numbers increase drastically.

## Diversity (Census, 2000)

- 8.1% age 65 and older
- 29% 19 years and younger
- ▣ Estimated 13% disabled



77% Caucasian  
12% African American  
3% Asian  
3% Latino

# Authority and Partnerships of All Hazard Plan

Who's in charge?

## Assumptions

- ▣ **Flexibility** – Response depends on scope and nature of incident
- ▣ **Collaboration** – preparedness and response are multi-disciplinary and multi-jurisdictional
- ▣ **Leadership** – WCPH will assume the lead on infectious disease or bioterrorism

Before we talk about authority, we have to understand that there may be some overlap of jurisdictions.

Depending on the emergency, the county will be flexible, possibly work with other jurisdictions, and be willing to assume or relinquish some leadership.

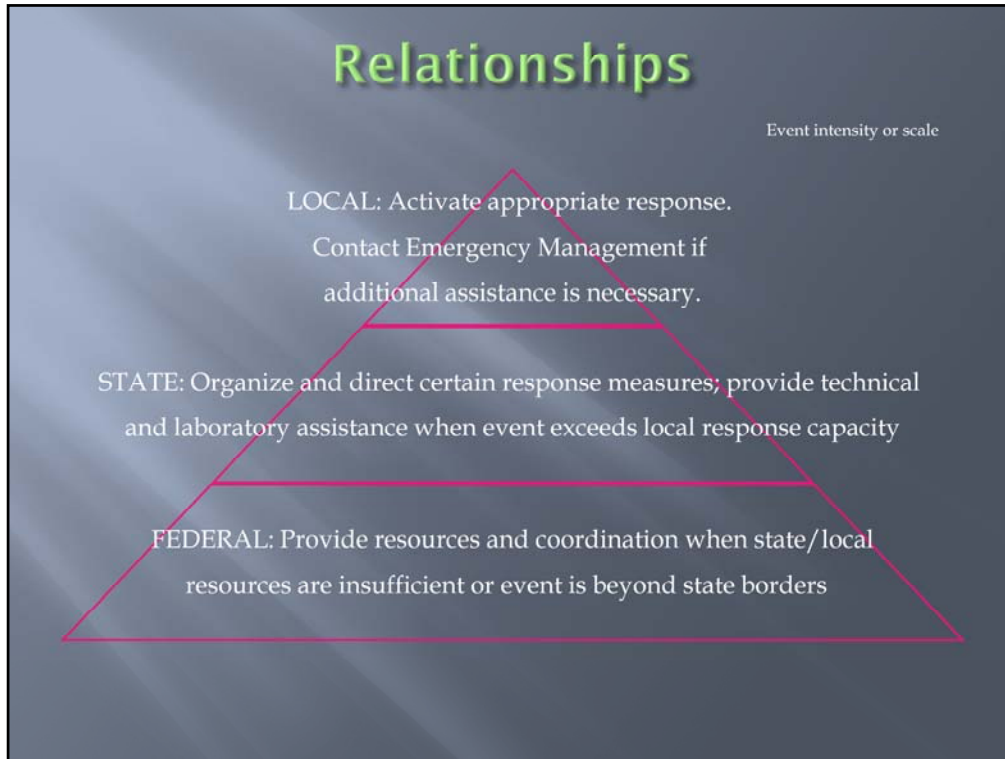
# Collaboration

- Possible Partnerships
  - Emergency management
  - Health care providers
  - Elected officials
  - Centers for Disease Control and Prevention (CDC)
  - First responders
  - American Red Cross
  - Community leaders & organizations



We work with public and private organizations to insure a coordinated response to an emergency.

Partnerships can occur at each level.



If an emergency were to happen in Washtenaw, local government must act first to attend to the public's emergency needs. Depending on the nature and size of the emergency, State and Federal assistance may be provided to the local jurisdiction. The local EOP focuses on the measures that are essential for protecting the public. These include warning, emergency public information, evacuation, and shelter. (From FEMA, Federal Emergency Management Agency)

## Legal Authorities

- State
  - Governor
    - Jennifer Granholm
  - Director of the MDCH
    - Janet Olszewski
- Counties and Municipalities
  - Local Health Officers
    - Richard Fleece
    - Ellen Rabinowitz
    - Dr. Bader Cassin
  - Emergency Management Coordinator
    - Cindra James



Dick – Director and Health Officer (center, left)

Ellen – Director of Washtenaw Health Plan (center, right)

Bader – Medical Examiner (bottom, left)

Cindra – Public Health Preparedness Coordinator & MRC Coordinator (bottom, right)

## Roles at the local, county level

- ▣ Incident Manager & Team
- ▣ Planning Team
- ▣ Operations Chief/Team
- ▣ Logistics-Finance Chief/Team

**The legal authorities delegate responsibilities to the following roles. Roles are assigned to WCPH staff.**

## Incident Manager & Team

Incident Manager - coordinates the department's response to an emergency event.

Incident Management Team: supports the Incident Manager by implementing the response activities.



## Planning Team

Responsible for:

- ▣ the situation & its status
- ▣ emergency staffing, documentation & recording

Under the direction of the Incident Manager & Team.



## Operations Team

- Responsible for planning and delivering public health activities in the field
- Under the direction of the Incident Manager and the Incident Management Team.
- Communicable Disease, Medical & Mental Health Response

### Operations Team

#### Composed of

Operations Chief  
Communicable Disease Response Director  
EH Disaster Response Director  
Medical Response Director  
Mental Health Response Director  
Other adjunct personnel, as deemed necessary

## Logistics-Finance Team

Responsible for assuring:

- ▣ Adequate facilities
- ▣ Staffing
- ▣ Supplies
- ▣ Data management
- ▣ Communications
- ▣ Financial accounting



**Logistics Team:** is responsible for assuring that adequate facilities, staffing, supplies, communications, data management, and financial accounting are available to meet the emergency.

Determine methods and schedules for monitoring above expenses.

## Summary

- ▣ Emergencies happen
- ▣ The All-Hazards plan:
  - Defines potential Public Health roles, responsibilities and actions.
  - Relies on collaboration and cooperation with multiple organizations, emergency entities, health providers and the public.
- ▣ Public Health has key roles in infectious disease or bioterrorism response.

Prepare for everything when there's no emergency, what are the "what if's"

## Notification in an Emergency

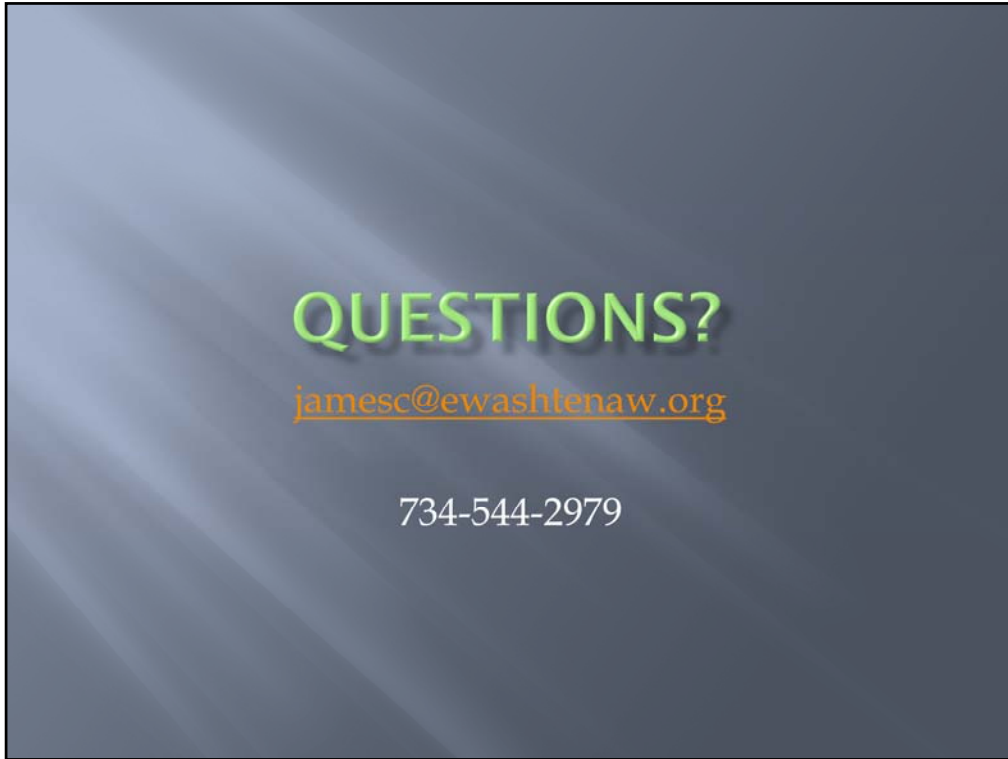
- ▣ Communication tools
  - Email groups
  - Cell phones
  - Radio: WEMU 89.1 FM or WWWW 102.9 FM
  - 800 MHz radios
  - MI Volunteer Registry
- ▣ Tested Regularly



**Cindra James, the Emergency Preparedness Coordinator.** Other staff may be assigned to work with the MRC depending on funding levels. Non-emergency communication will occur through email.

The level of urgency and level of response needed, as well as the communication tools that are available/working will determine the communication method used to notify you.

Please keep your contact information updated, so that we can contact you in the event of an emergency.



Please contact Cindra if you have any questions regarding the All-Hazards Plan.