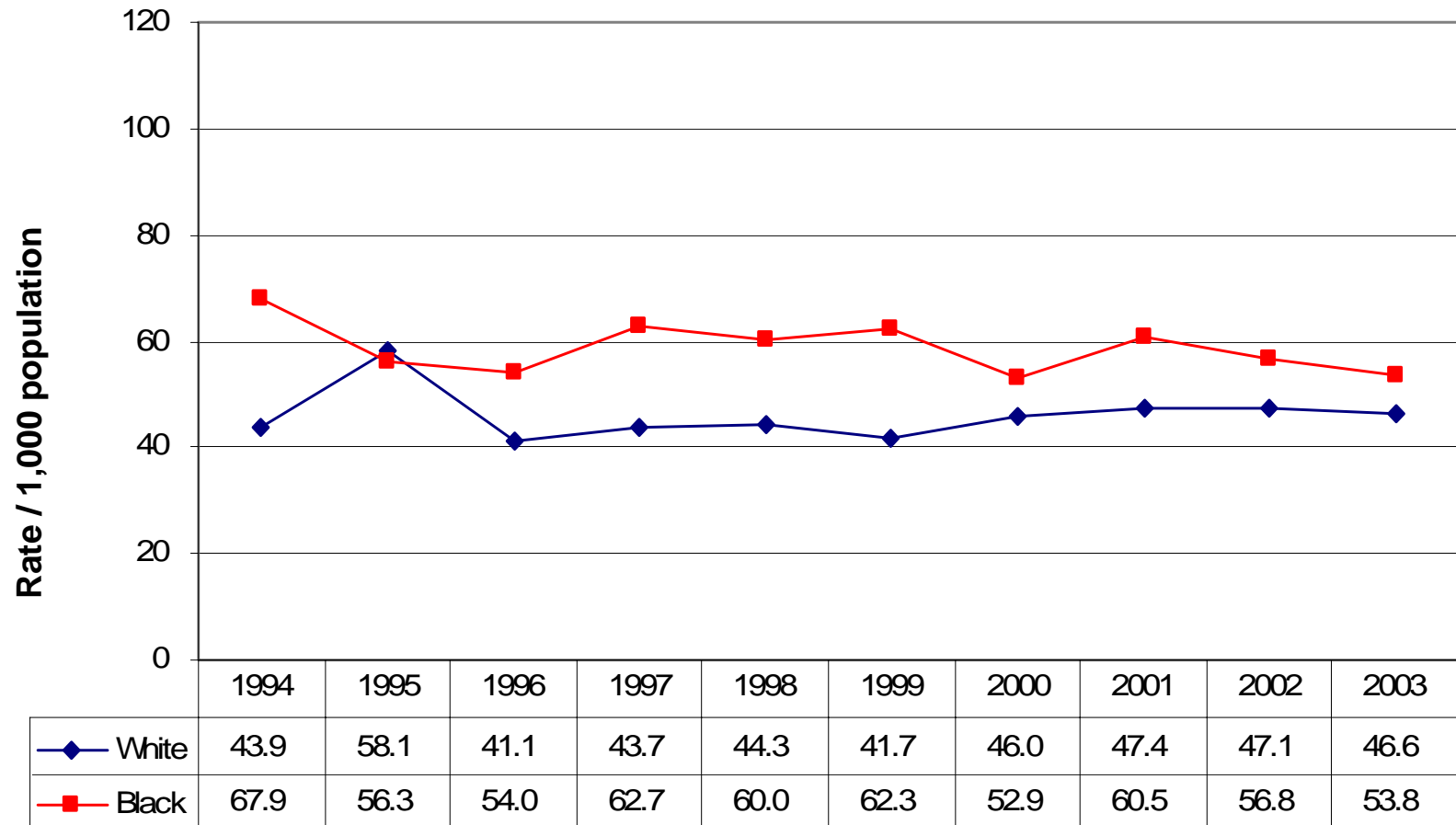
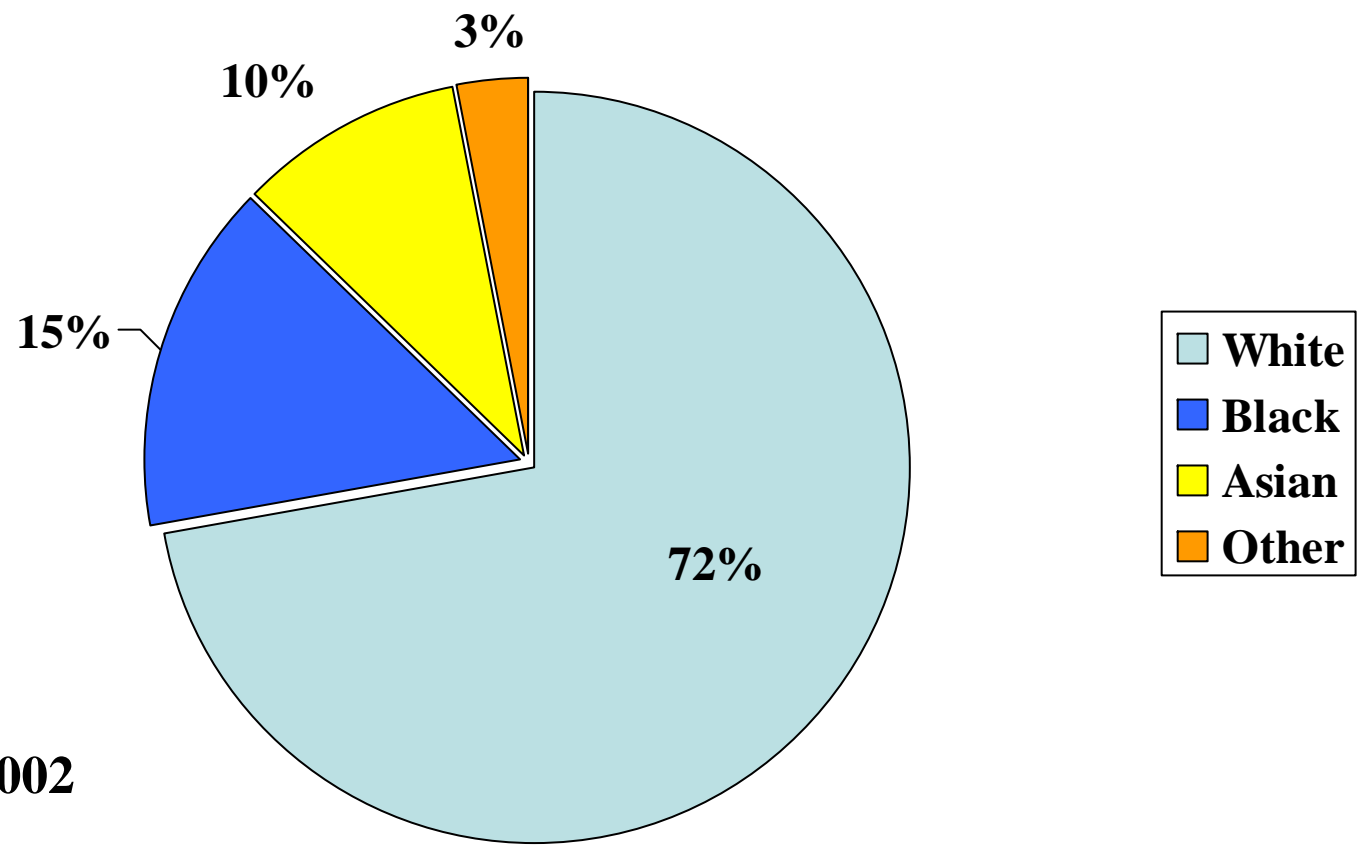


Washtenaw County Trends of Birth Rate by race



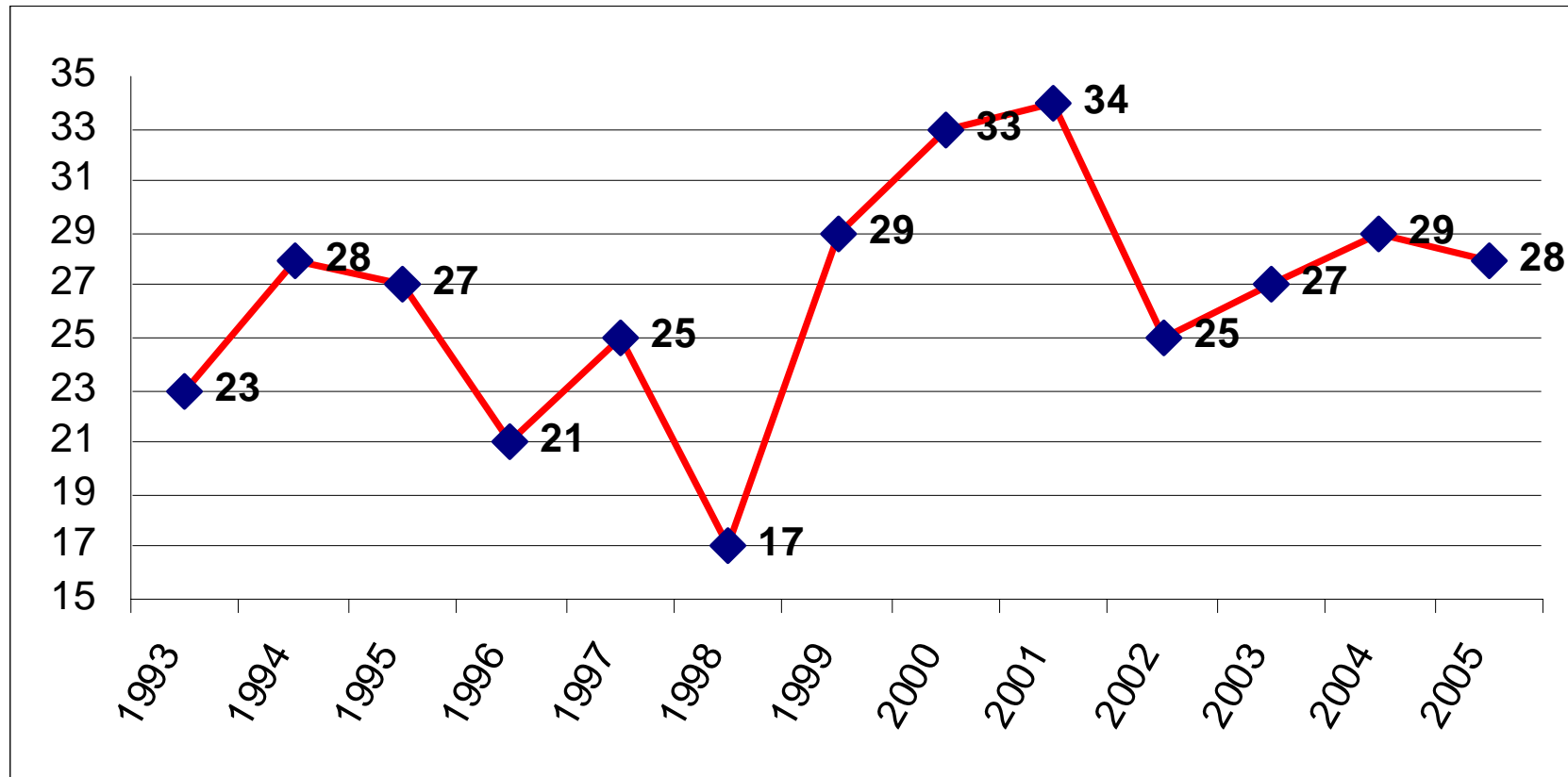
More than 1/5 of county births are to moms who are not born in the U.S.

Washtenaw County Percent of Births by Race



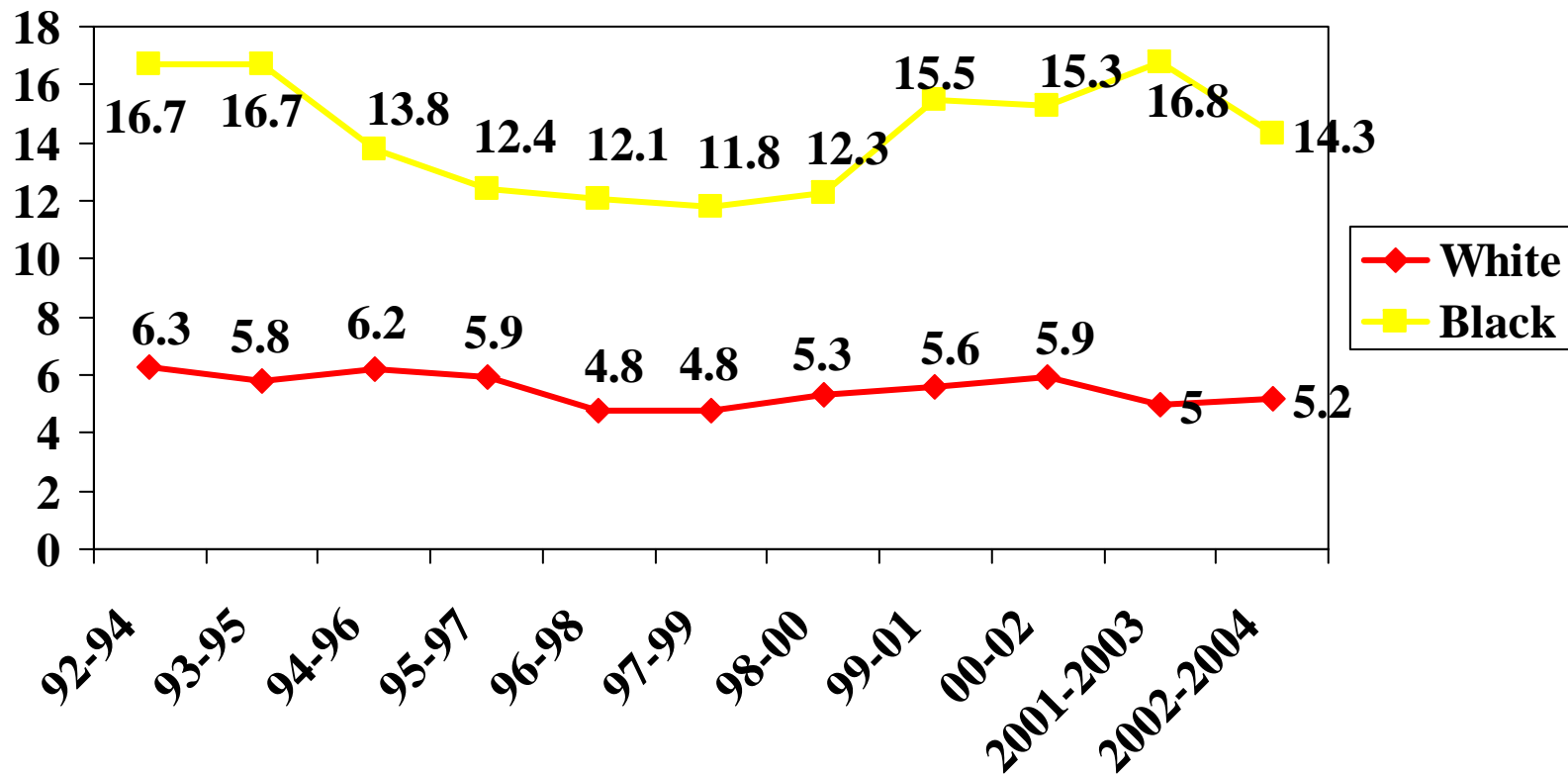
4,196 Births in 2002

Washtenaw County Infant Deaths 1993-2005



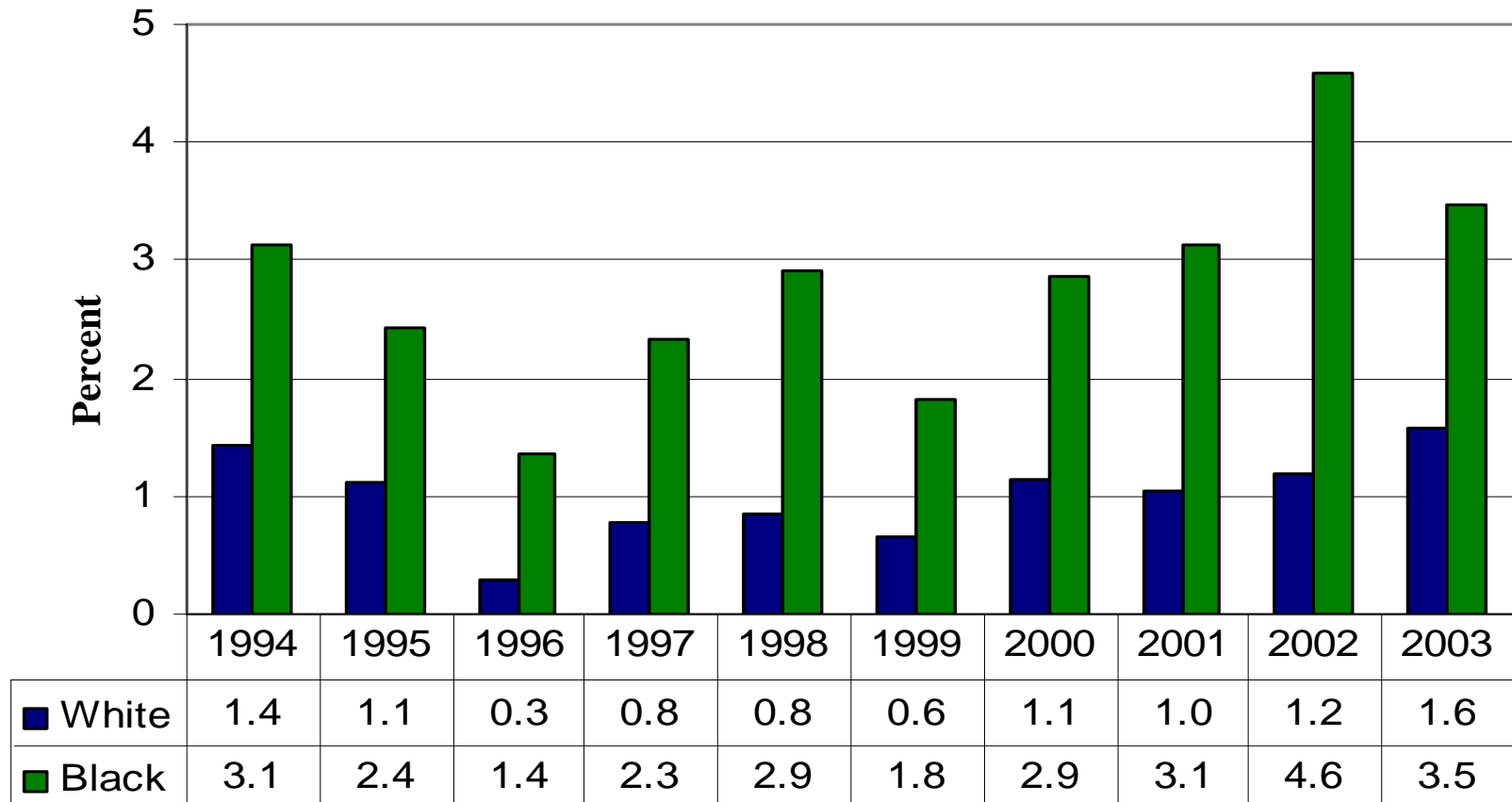
Adapted from a slide by Rosemary Fournier, using Washtenaw County data

Washtenaw County: Black /White IM rates by 3 yr. moving average



Adapted from a slide by Rosemary Fournier, using MDCH data; rate is per 1,000

Washtenaw County Very Preterm births (<=31 wks. gestation) by race



2002-2004 Infant Mortality Rates

	Washtenaw County	State of Michigan
Black	14.3 (+/- 5.3)	17.7 (+/- 1.0)
White	5.2 (+/- 1.5)	6.0 (+/- .3)
Total	6.4 (+/- 1.4)	8.1 (+/- .3)