

HAZARD MITIGATION PLAN for York Township

December 2004



CHARTER TOWNSHIP OF YORK
WASHTENAW COUNTY, MICHIGAN
RESOLUTION NO. 2004-19

HAZARD MITIGATION PLAN ADOPTION AND RESOLUTION

WHEREAS, the Charter Township of York has experienced disasters that have resulted in loss of life or injury, damaged commercial, residential and public properties, displaced citizens and businesses, closed streets and bridges, and presented general public health and safety concerns; and

WHEREAS, as of November 2004 the Federal Emergency Management Agency (FEMA) requires that communities have an adopted Hazard Mitigation Plan as a requirement to receive funding under certain FEMA programs; and

WHEREAS, the *Hazard Mitigation Plan for the Charter Township of York* ranks hazards for the community and identifies goals, objectives and strategies to reduce overall damage and impact from natural and technological hazards; and

WHEREAS, the Charter Township of York worked with Washtenaw County to prepare the plan by participating in the planning process and providing comments with respect to hazards, vulnerable areas and strategies; and

WHEREAS, residents, community officials, business owners, educational institutions neighboring jurisdictions and the Michigan State Police Division of Emergency Management have had the opportunity to review the plan and their comments have been incorporated;

NOW, THEREFORE, BE IT RESOLVED THAT:

1. The *Hazard Mitigation Plan for the Charter Township of York* is adopted as an official plan for the Charter Township of York.
2. The *Hazard Mitigation Plan for the Charter Township of York* will be an annual agenda item for the Charter Township of York Board of Trustees to review. The annual review shall include the following:
 - a. A review of the original plan.
 - b. A review of any disasters or emergencies that occurred during the previous calendar year.
 - c. A review of actions taken, including what was accomplished during the previous year.
 - d. A discussion of any implementation problems.
 - e. Recommendations for new projects or revised action items. Such recommendations shall be subject to approval by the individual boards or council.
3. The *Hazard Mitigation Plan for the Charter Township of York* will be updated every five years as required by FEMA, with the assistance of Washtenaw County.
4. The Supervisor will be responsible for ensuring that the strategies in the plan are implemented, with the understanding that implementation is based on the availability of funding and staff resources.

ROLL CALL VOTE:

AYES: Neill, Potter, Zurawski, Donahue, Kartje, Bulmer

NAYS: None.

ABSENT: Kipley

RESOLUTION DECLARED ADOPTED 6-0-1

Helen Neill

Helen Neill, Clerk, Charter Township of York

CERTIFICATE

I, Helen Neill, certify that the foregoing is a true and complete copy of Resolution #2004-19 adopted by the Township Board for the Charter Township of York, County of Washtenaw, State of Michigan, at a Regular meeting held on the 14th day of December, 2004, and that public notice of said meeting was given pursuant to Act No. 267, Public Acts of Michigan, 1976, as amended.

Helen Neill

Helen Neill, Clerk
Charter Township of York

Dated: December 14, 2004

Charter Township of York
Resolution #2004-19

Table of Contents

	Page
1.0 INTRODUCTION_____	1
1.1 Purpose_____	1
1.2 Plan Organization_____	1
1.3 Public Participation_____	1
2.0 COMMUNITY PROFILE_____	3
2.1 Historic Overview_____	3
2.2 Natural Features_____	3
2.3 Land Use Patterns_____	3
2.4 Transportation_____	3
3.0 HAZARDS_____	4
3.1 Hazard Ranking_____	4
3.2 Hazard Assessment_____	4
4.0 HAZARD GOALS, OBJECTIVES AND STRATEGIES_____	7
4.1 Current York Township Initiatives_____	7
4.2 Non-Hazard Specific Goals and Strategies_____	7
4.3 Hazard Specific Goals and Strategies_____	9
5.0 IMPLEMENTATION, AND MONITORING_____	11
5.1 Implementation_____	11
5.2 Sources of Financial Assistance_____	12
5.3 Monitoring_____	12

Tables

Table 1: Hazard Ranking Table_____	4
Table 2: Vulnerability Assessment Summary_____	5

Figures

Figure 1: Natural Features_____	2
Figure 2: Assets_____	6
Figure 3: Tornado Warning Siren Coverage and Past Events_____	8

Attachments

- Attachment 1: County Hazard Plan
- Attachment 2: Federal and State Funding Sources

1.0 INTRODUCTION

Hazard Mitigation is defined as any action taken before, during or after a disaster to permanently eliminate or reduce risks to human life and property from natural, technical or societal hazards. York Township has experienced hazards at varying degrees, and can expect to encounter hazards in the future. The value of a Multi-Hazard Mitigation Plan (Plan) lies in reducing future emergencies to events; by implementing mitigation strategies set forth in this Plan, the expectation is for hazard occurrences to result in fewer deaths and injuries to people, and lessened damage or destruction to structures and the environment. Response and recovery costs should also be reduced.

The Federal Emergency Management Agency (FEMA) provides assistance to local units of government when faced with disasters through the Robert T. Stafford Disaster Relief and Emergency Assistance Act (the Stafford Act). Recognizing that planning for hazards is an important component of hazard preparedness, response and recovery programs, the Stafford Act was amended in 2000 to require governments to have an adopted Hazard Mitigation Plan as condition of receiving financial assistance through the FEMA Hazard Mitigation Grant Program by November of 2004.

1.1 Purpose

There are three purposes of this Plan: 1) to identify and rank hazards in York Township; 2) to analyze areas particularly vulnerable to hazards; and 3) to identify feasible mitigation strategies that can be acted upon after adoption of the Plan. The mitigation goals and strategies should also be incorporated into the York Township General Development Plan, and other plans, as applicable.

1.2 Plan Organization

This Plan was prepared by Washtenaw County on behalf of York Township. Individual plans were prepared for each local unit of government in recognition of their unique circumstances and potential differences in priorities, goals and mitigation strategies. General information, such as community profile data and hazard descriptions, is contained in the County plan (Attachment 1).

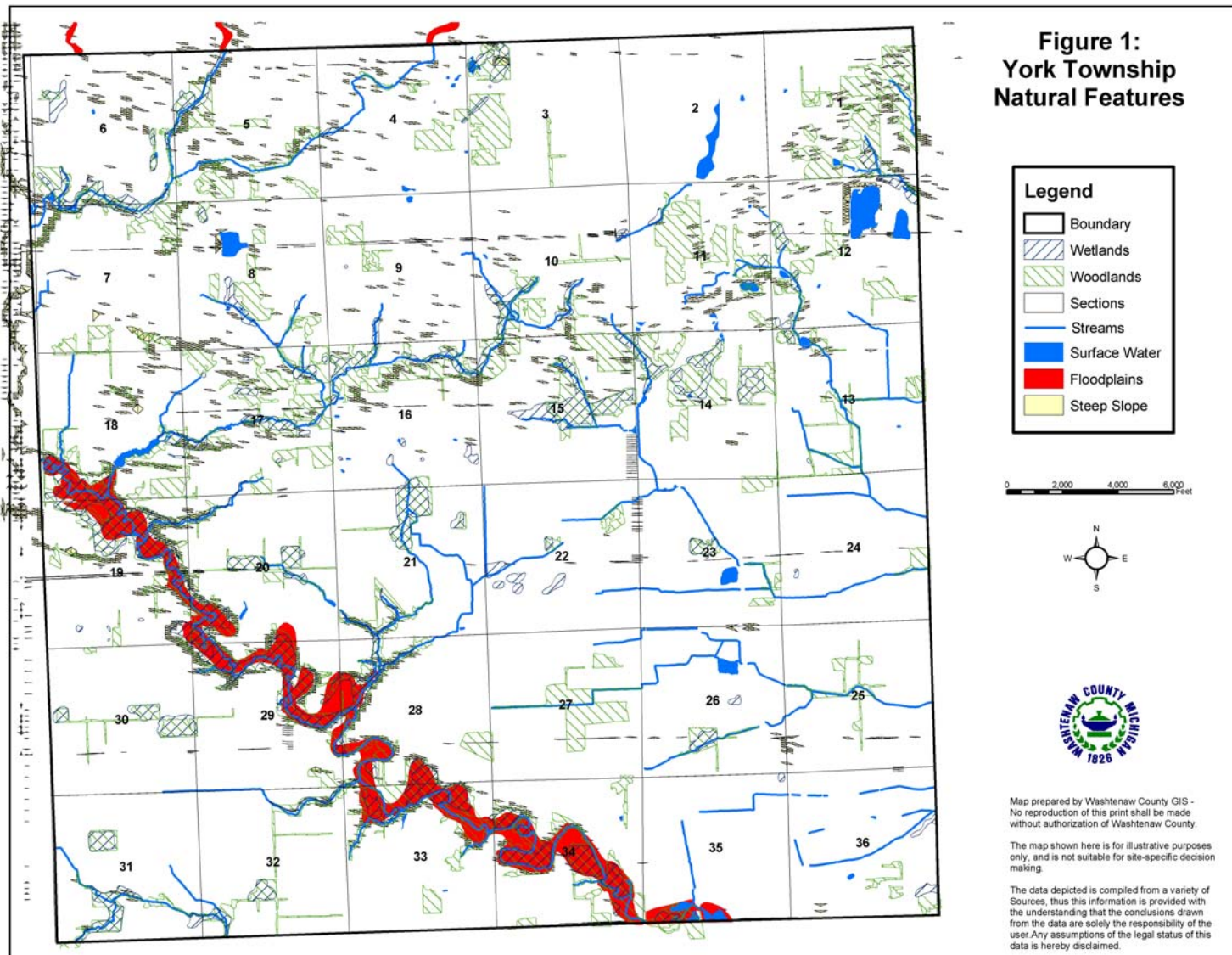
1.3 Public Participation

Representatives from York Township worked with the Washtenaw County Emergency Management Division and Department of Planning and Environment to draft the hazard mitigation plan. An opportunity for the citizens of Township to comment on the draft plan was provided in June of 2004, when five regional planning workshops were held at various locations around the county in conjunction with the Comprehensive Plan for Washtenaw County. Another workshop was held on June 9, 2004 for commission, board and council members from every community. The draft plan was introduced and copies were available for review at every workshop. Regional workshops were advertised in the local newspapers.

The Township Board of Trustees also provided an opportunity for public comment prior to adopting the plan on December 14, 2004.

Continued public participation is encouraged through Washtenaw County through website postings, emails, and general contact with local governments. Any comments received by the County on the plan concerning York Township will be shared with the Township.

York Township



York Township

2.0 Community Profile

2.1 Historic Overview

York Township was established in 1834. The railroad junction, located south of the Township, brought early settlers to the area. Prime agricultural lands were also an attraction. Today, the Township is considered rural, but is experiencing growth pressure due to the City of Saline, located in the northwest corner of the Township and the City of Milan, located in the southeast corner of the Township.

2.2 Natural Features

Few small lakes can be found in the Township; however, the major water feature is the Saline River. It is located in south/southwest area of the community. The floodplains are associated with the Saline River. There are many areas of groundwater recharge in the Township. The larger areas though are located along the western border, the southeast corner and in the northeast (Section 10).

There are many woodland and wetlands areas throughout the township, and these generally follow rivers and creeks. The topography ranges from flat to gently rolling. Most soils in the areas have severe limitations for septic; areas with minor limitations are generally located in the north and northwest portions and along Stony Creek Road.

2.3 Land Use Patterns

York Township consists of approximately 22,435 acres. Urban influences come from the northwest (City of Saline) and southeast areas (City of Milan) portions of the Township. Still, a majority of lands, 56%, are set aside for active agricultural use - these are primarily located southeast of the City of Saline. The northern third portion of the Township has been developed in large-lot, single family residential. Higher density residential is located in close proximity to the City of

Milan. Also within the Township is an extractive operation, which is centrally located, and commercial and/or light industrial facilities located west of the US-23/Willis Road interchange and at the northwest corner of the US-23/Carpenter Road interchange.

In addition to these land uses, a Federal prison is located in the southeast corner of the Township, and a State Forensic Center located in the northeastern area.

2.4 Transportation Network

The transportation network consists of major and minor collectors, and local roads and streets. US-23 runs north-south and traverses the east side of the Township. There are two railroads, as well as two landing strips/airfields.

York Township

3.0 Hazards

York Township is susceptible to a variety of natural, technological, and societal hazards. The purpose of this section is to:

- Rank the hazards for York Township
- Analyze the risks for each hazard, and
- Identify vulnerable areas for the Township, and appropriate goals and mitigation strategies for certain hazards.

Hazard Ranking

The ranking of hazards for York Township is presented as Table 1. The ranking of hazards was determined on a county-wide basis, and adjusted based on input from Local Units of Government. The ranking order was developed by the Washtenaw County Emergency Management Division using a program provided by the Michigan State Police Emergency Management Division. The model takes into account worst-case scenario data for frequency of occurrence, likelihood of occurrence, significance of impact/threat, potential size of geographic area impacted and total population impacted.

3.2 Hazard Assessment

The purpose of the hazard assessment is to map out where hazards exist and gain information about their frequency of occurrence, and potential for harm using worst-case scenario estimates. Different levels of risk analysis are performed, depending on the significance of the hazard for the community:

- Cursory: A short statement explaining why the hazard is not a threat, prepared for hazards that have little impact or are unlikely to occur.

Table 1: Hazard Ranking

Hazard	Ranking
Convective Weather (Severe Winds, Tornadoes, Lightning, Hail)	1
Hazardous Materials Incidents: Transportation	2
Hazardous Materials Incidents: Fixed Site	3
Infrastructure Failures	4
Severe Winter Weather Hazards (Snow Storms and Ice/Sleet Storms)	5
Transportation Accidents: Air, Land and Water	6
Extreme Temperatures	7
Flood Hazards: Riverine/Urban Flooding	8
Fire Hazards: Wildfires	9
Fire Hazards: Structural Fires	10
Public Health Emergencies	11
Drought	12
Civil Disturbances	14
Flood Hazards: Dam Failures	15
Earthquakes	15
Nuclear Attack	16
Oil and Gas Well Accidents	17
Petroleum and Natural Gas Pipeline Accidents	18
Nuclear Power Plant Accidents	19
Fire Hazards: Scrap Tire Fires	20
Sabotage & Terrorism	21

York Township

- Standard: An explanation of concerns with limited quantitative research, prepared for hazards likely to occur and impact our communities.
- Advanced (Vulnerability): A vulnerability determination using probabilities, prepared for hazards that have the highest frequency of occurrence and/or the most potential to cause death, injury or damage to personal property.

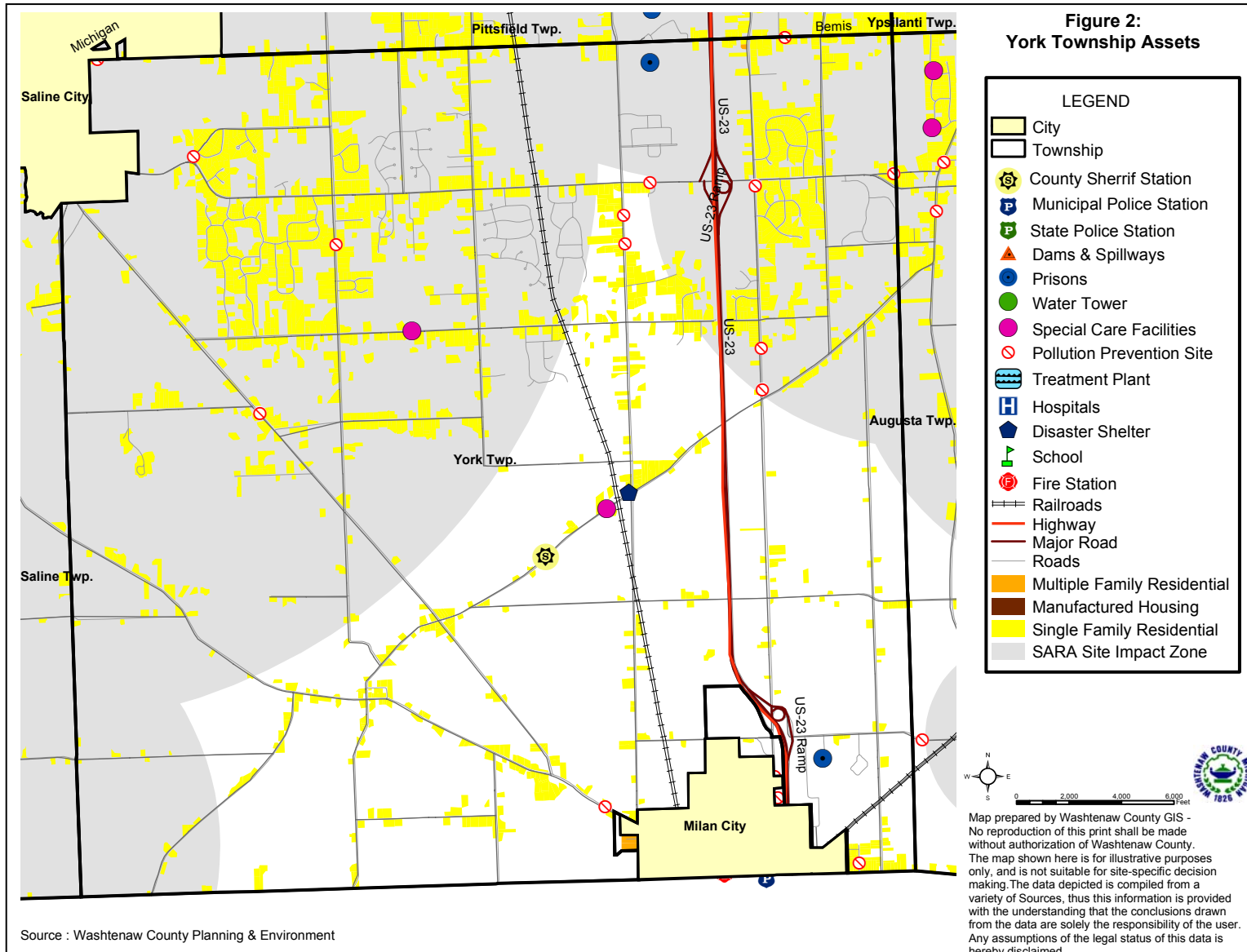
Vulnerability assessments were prepared for convective weather, hazardous materials transportation incidents, hazardous materials fixed site incidents, infrastructure failures and severe winter weather hazards. The goal is to quantitatively measure the threat experienced by Washtenaw County communities. By placing a monetary value on a hazard, a cost-benefit comparison can be made: the benefit of implementing a mitigation strategy compared to the cost of the hazard event.

Table 2 presents the results of the vulnerability assessment. The value of the vulnerability assessment is to provide a cost by which the mitigation strategies may be compared. A discussion of the determination is provided in the hazard section of the County Plan (Section 3.2). The methodology for each is presented in Appendix A of the County Plan.

Table 2. Vulnerability Assessment Summary

Rank	Hazard	Estimated Annual Cost
#1	Convective Weather	
	Tornado	\$5,078,755
	Severe Winds and Lightning	\$90,242,418
	Hail Storm	\$3,738,153
#2	Hazardous Material Transportation Incidents	\$6,838,963
#3	Hazardous Material Fixed Site Incidents	\$2,913,038
#4	Severe Winter Weather	\$36,191,763
#5	Infrastructure Failure	\$6,139,214

York Township



Source : Washtenaw County Planning & Environment

4.0 Hazard Goals and Strategies

The following sections present goals and strategies by hazard. Figure 2 presents the assets and hazards identified for Dexter Township, and may be referred to in the following sections. The goals, objectives and strategies are not an inclusive list; rather the goals, objectives and strategies are those that the Township is focusing on at this time.

The repetition of strategies reflects the need for their implementation, not the duplication of services. For example, distribution of educational materials should not be performed several times, throughout the year per hazard, rather one mailing regarding family preparedness kits would address all hazards for which this strategy is listed.

4.1 Current York Township Initiatives

In 2004, York Township formed an Emergency Management Group, consisting of six entities within the Township: York Baptist Church, Tri-County Sportman's League, Township Hall, Fellowship Baptist, South Arbor Academy Charter School and Calvary Bible Church. They work together with the Red Cross on establishing shelters that may be opened in the event of a hazard. The locations currently under consideration are schools located in the cities of Milan and Saline.

York Township also participates in the FEMA National Floodplain Insurance Program. Communities in the program are better positioned to receive assistance in the event of an emergency. Residents in communities not enrolled will need to wait for the application process to be completed before they are eligible for funding assistance through FEMA.

4.2 Non-Hazard Specific Goals and Strategies

Goal: Integrate mitigation strategies into the Township General Development Plan

Mitigation Strategy: Plans

- Establish a committee charged with amending the Master Plan to include hazard mitigation goals and strategies, as applicable.

4.3 Hazard Specific Goals and Strategies Convective Weather

Goal: Reduce the Township's vulnerability to convective weather storm hazards, minimize loss of life and injury, and damage to public property

Vulnerable areas with respect to convective weather hazards include the Federal Correction Institute and the State Forensic Center. These facilities hold larger concentrations of people that pose a threat, particularly under hazardous conditions.

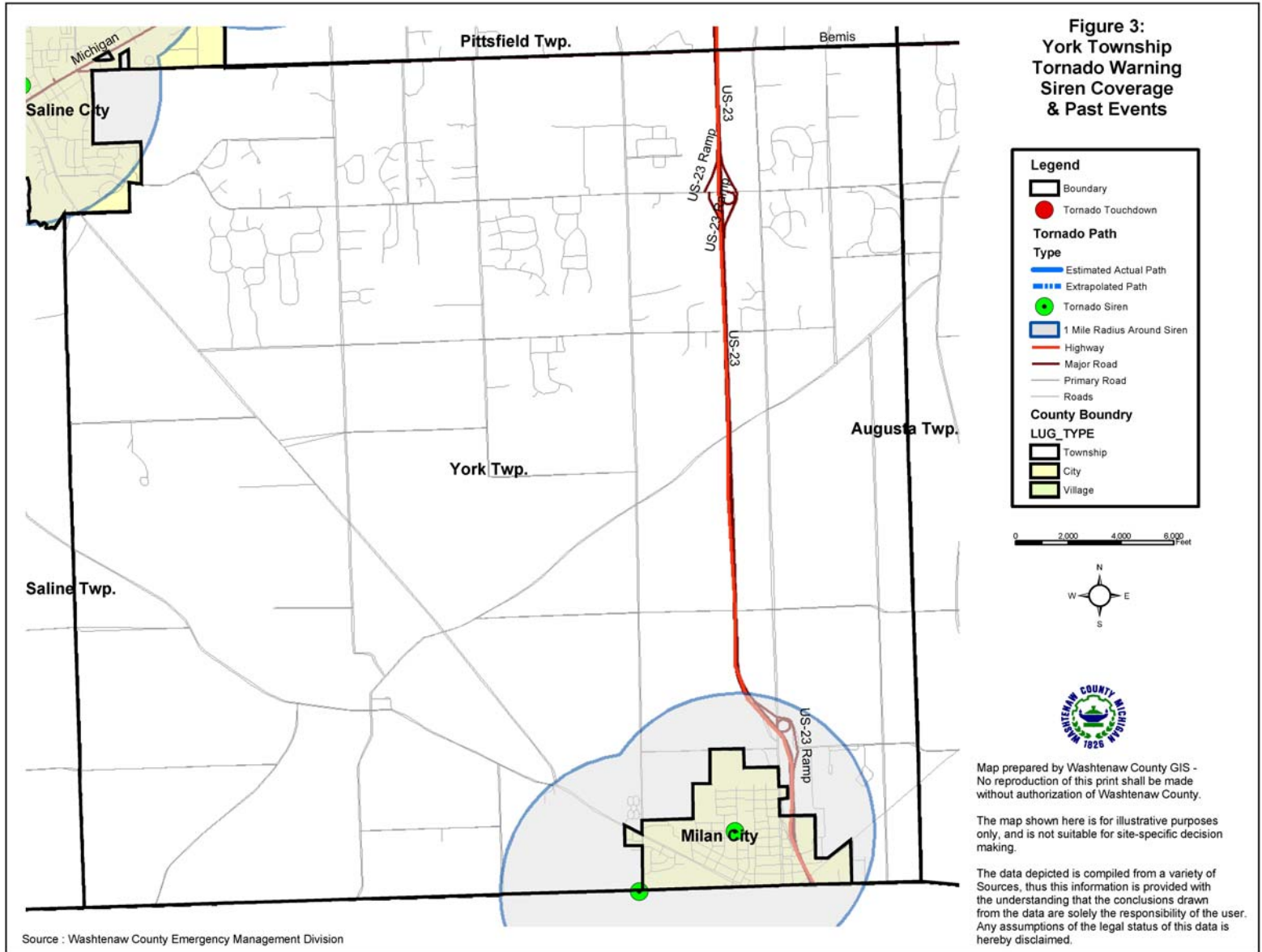
Mitigation Strategy: Warning Sirens

- Secure funding for installation of warning sirens. A portion of the York Township population is covered by a warning siren (Figure 3). The siren reaches approximately 23% of the Township population, or 1,715 people. There is a second siren located at the Forensic Center, however, it is not yet connected to the Washtenaw County Emergency Management Division, and as a result it is not shown on Figure 3. The goal is for all Township residents to be reached by a siren.

Mitigation Strategy: Emergency Generators

- Secure funding to install emergency generators at the potential shelter locations (see 4.1 for discussion on shelters).

York Township



York Township

Mitigation Strategy: Public Education

- Distribute Emergency Preparedness materials to inform residents about actions to take during an event, or actions to minimize damage caused by an event. (See Family Preparedness Kit information box). Materials may be distributed through mailings, website linkages, or other methods identified by the Township.

Mitigation Strategy: Maintenance

- Distribute annual reminders to ground utility providers, encouraging them to keep power lines clear of trees and tree limbs. This would reduce the chance of electrical power failure for Township residents and businesses.

Mitigation Strategy: Training

- Encourage residents to attend the Washtenaw County Emergency Management Division Skywarn Spotter training program. Training is free of charge to anyone 18 years of age or older who is interested in being trained in severe weather identification, protection, and reporting procedures.
- Continue Environmental Protection Agency and Department of Environmental Quality on Storm Water Management Phase II training.

Hazardous Materials Transportation Incidents

There is a major railroad that diagonally traverses the Township, making the community vulnerable to hazardous materials transportation accidents. There is one manufacturing facility in York Township: Milan Castle Metals. It is located in the southeast portion of the township, near the City of Milan.

Goal: Reduce the risk of damage, loss of life, and other costs resulting from hazardous material transportation incidents.

Family Preparedness Kits

1. Have Emergency Supplies at the ready:
 - A three-day supply of water one gallon/person/day and food that won't spoil
 - One change of clothing, footwear, and blanket/sleeping bag per person
 - First aid kit including family prescription medications
 - Tools: flashlight, battery-powered radio and extra batteries
 - Extra car keys, credit cards, cash or travelers checks
 - Sanitation supplies
 - Special items for infant, elderly or disabled family members
 - Extra pair of glasses
 - Locate the fuse box water service main and natural gas main and learn how to turn on and off.
2. Create a disaster plan where to meet, contact numbers, who will take care of the family pet, take first aid, learn how to use a fire extinguisher, etc.
3. Practice the Plan and maintain supplies!

If having electric power is extremely important to you, consider having a qualified electrician install an emergency generator before a disaster strikes!

For more information, see FEMA's website at <http://www.fema.gov/pdf/library/yfdp.pdf>

York Township

Mitigation Strategy: Warning Sirens

- Secure funding for installation of warning sirens. (See strategy under Convective Weather for further discussion.)

Mitigation Strategy: Emergency Generators

- Secure funding to install emergency generators at the potential shelter locations. (See Section 2.4 for discussion on shelter locations.)

Mitigation Strategy: Public Education

- Distribute Emergency Preparedness materials to residents. (See strategy under Convective Weather for further discussion.)

Mitigation Strategy: Training and Support

- Continue to support training of and equipment for the Washtenaw County HazMat Team and local fire departments.

Mitigation Strategy: Hazardous Spills Expense Recovery Ordinance

- Adopt the Hazardous Spills Expense Recovery Ordinance, a vehicle whereby a local unit of government may recover costs of response and recovery to a release of hazardous materials.

Hazardous Materials Fixed Site Incidents

York Township residents may be impacted by a fixed site incident by SARA Title III facilities located in the City of Milan and the City of Saline (Figure 2). Additionally, there are several sites in the Township that participate in the County's Pollution Prevention program, and therefore have chemicals stored, used or manufactured on-site.

Goal: Reduce the risks of hazardous material fixed site incidents in the Township by increasing the ability to respond

and minimizing the impacts to the citizens, environment and economy.

Mitigation Strategy: Warning Sirens

- Secure funding for installation of warning sirens. (See strategy under Convective Weather for further discussion.)

Mitigation Strategy: Emergency Generators

- Secure funding to install emergency generators at the potential shelter locations. (See Section 4.1 for discussion on shelter locations.)

Infrastructure Failure

Goal: Decrease the Township's vulnerability to infrastructure failures and continue to strengthen the Township's ability to assist its citizens during an event.

Mitigation Strategy: Emergency Generators

- Secure funding to install emergency generators at the potential shelter locations. (See Section 4.1 for discussion on shelter locations.)

Mitigation Strategy: Maintenance

- Distribute annual reminders to ground utility providers, encouraging them to keep power lines clear of trees and tree limbs, specifying addresses and locations of problem trees.

Mitigation Strategy: Public Education

- Distribute Emergency Preparedness materials to residents. (See strategy under Convective Weather for further discussion.)

Severe Winter Weather Hazard

Above ground power supply, coupled with mature trees can be a disaster when heavy snows or freezing rain occurs. The weight of the frozen precipitation causes tree limbs to fall on power lines, causing power outages, which is a significant

problem. Loss of power in the winter generally means loss of heat for citizens. Falling tree limbs also damage property, block emergency routes and roadways, endanger lives and are very costly to clean up and remove.

Goal: Reduce the damage and impacts caused by severe winter weather hazards continue to reduce the impact of such an event on the community.

Mitigation Strategy: Emergency Generators

- Secure funding to install emergency generators at the potential shelter locations. (See Section 4.1 for discussion on shelter locations.)

Mitigation Strategy: Maintenance

- Distribute annual reminders to ground utility providers, encouraging them to keep power lines clear of trees and tree limbs, specifying addresses and locations of problem trees.

Mitigation Strategy: Public Education

- Distribute Emergency Preparedness materials to residents. (See strategy under Convective Weather for further discussion.)

5.0 Implementation, Funding and Monitoring

The purpose of this plan is to identify mitigation strategies that will be implemented before, during or after a disaster to permanently eliminate or reduce risks to human life and property from natural, technical or societal hazards. The following sections present implementation actions, funding sources, and the method for monitoring the plan.

5.1 Implementation

The following schedule is given for hazard mitigation strategies described in Section 4.0. Completion dates have not been

included as such dates are subject to uncertain factors, and will only begin after the mitigation strategy has been approved. While all strategies are important, priority is has been given to those that may be funded by a FEMA hazard mitigation grant program (see Section 5.2). Action on strategies will depend upon staff, resource and funding availability.

High Priority Strategies

Warning Sirens

Responsible Agencies: York Township and Washtenaw County Emergency Management Division

Estimated Cost: \$18,000 for siren and first year of maintenance fees, \$500 annually thereafter (does not include replacement parts).

Emergency Generators at Shelter Locations

Responsible Agencies: York Township

Estimated Cost: \$6,000 to 10,000 per generator.

Other Important Strategies

Training and Education

- Continued training, equipment and maintenance for local and County Hazardous Material Response Teams.
- Encourage residents to attend Skywarn Spotter Training program.
- Continue EPA and MDEQ Storm Water Management Phase II training program

Responsible Agency: York Township and Washtenaw Count Emergency Management Division

Estimated Cost: Staff time.

York Township

Public Education (brochures, mailings regarding Family Preparedness kits)

Responsible Agencies: York Township

Estimated Cost: \$1,200 annually.

Maintenance: reminders to ground utility providers of power line clearances.

Responsible Agencies: York Township

Estimated Cost: Staff time.

Amend Master Plan to incorporate hazard mitigation goals, strategies

Responsible Agency: York Township

Estimated Cost: Staff time.

5.2 Sources of Financial Assistance

Implementation of the mitigation strategies is often dependent on funding assistance from Federal and State sources. FEMA provides funding for “bricks-and-mortar” projects through the hazard mitigation grant programs. These include the Hazard Mitigation Grant Program, Pre-Disaster Mitigation Assistance Program, and the Flood Mitigation Assistance Program.

FEMA emphasizes the implementation of structural mitigation strategies. The strategies that are a priority for FEMA are not a priority for York Township at this time. The strategies listed in this plan that qualify for FEMA funds include emergency generators and warning sirens.

Financial support for other mitigation strategies proposed in this plan may be sought through alternative funding sources. For example, funds for public outreach, equipment and training may be obtained through the FEMA Emergency Management Performance Grant (EMPG). Projects may be implemented with the assistance of non-profit organizations, or funds secured from Community Foundations. There are many State

and Federal programs that are available to local governments, as provided in Attachment 2.

5.3 Monitoring of the Plan

The plan will be monitored on a regular basis, and is the responsibility of the York Township Supervisor. The plan will be an annual agenda item for the York Board of Trustees. At a minimum, during its review, the Board will discuss the monitoring of the plan, the number of projects pursued, or reasons for lack of pursuit for approved projects. Prior to the meeting, the Washtenaw County Emergency Management Division can be contacted for updates or recommended amendments to the plan.

To assist with the annual evaluation and review of the plan, the Township may consider forming a local hazard mitigation committee. The committee could also be charged with identifying methods of obtaining public input.

Although review of the plan will occur annually, and a formal revision may not be needed each year, an update of the plan will be prepared every five years, based on annual reviews, amendments, monitoring, evaluation and accumulation of official feedback and public input. The revised plan will again be adopted by the Board of Trustees.

**Attachment 1
County Hazard Plan**

**Attachment 2
Alternative Funding Sources**

York Township

Funding Source	Civil Disturbance	Drought	Earthquake	Extreme Temperature	Scrap Tire Facilities	Structural Fire	Wildfire	Dam Failure	Flooding: Riverine	Flooding: Urban	Hazardous Materials Incidents - Fixed Site	Hazardous Materials Incidents - Transportation	Infrastructure Failure	Nuclear Attack	Nuclear Power Plant Incidents	Oil/Nat Gas Well Incidents	Petrol/Nat Gas Pipeline Incidents	Public Health Emergencies	Sabotage/Terrorism	Hail	Lightning	Severe Winds	Severe Winter Weather	Transportation Accidents	Tornado	Financial Assistance	Technical Assistance
FEDERAL SOURCES																											
Business and Industry Loans	√	√	√	√	√	√	√	√	√	√	√	√	√	√	√	√	√	√	√	√	√	√	√	√	√	√	√
CDC-Investigations and Technical Assistance																		√									√
CEPP Technical Assistance Grants Program											√	√						√								√	√
Community Assistance Program-State Support Services Element (NFIP)								√	√	√																	√
Community Development Block Grant/Economic Development Initiative									√	√			√										√				√
Community Development Block Grant/Entitlement Grants	√	√	√	√	√	√	√	√	√	√	√	√	√					√	√	√	√	√	√	√	√	√	√
Community Development Block Grant/Small Cities Program	√	√	√	√	√	√	√	√	√	√	√	√	√					√	√	√	√	√	√	√	√	√	√
Community Development Block Grant/State's Program	√	√	√	√	√	√	√	√	√	√	√	√	√					√	√	√	√	√	√	√	√	√	√
Community Disaster Loans	√	√	√	√	√	√	√	√	√	√	√	√	√	√	√	√	√	√	√	√	√	√	√	√	√	√	√
Community Facilities Loans and Grants	√	√	√	√	√	√	√	√	√	√	√	√	√	√	√	√	√	√	√	√	√	√	√	√	√	√	√
Community Outreach Partnership Center Program	√	√	√	√	√	√	√	√	√	√	√	√						√	√	√	√	√	√	√	√	√	√
Conservation Reserve Program									√	√															√	√	√
Cooperative Forestry Research							√																			√	√
Cora Brown Fund	√	√	√	√	√	√	√	√	√	√	√	√			√	√	√	√	√	√	√	√	√	√	√	√	√
Direct Housing Natural Disaster (Very Low/Low Income Loans)							√	√													√	√			√	√	√
Disaster Housing Program	√	√	√	√	√	√	√	√	√	√	√	√	√	√	√	√	√	√	√	√	√	√	√	√	√	√	√
Disposal of Federal Surplus Property (Transfers)									√																	√	√
Economic Adjustment Assistance								√	√	√													√			√	√
Economic Development Tech Assistance									√																	√	√
Emergency Advance Measures for Flood Protection								√	√	√																√	√

York Township

Funding Source	Civil Disturbance	Drought	Earthquake	Extreme Temperature	Scrap Tire Facilities	Structural Fire	Wildfire	Dam Failure	Flooding: Riverine	Flooding: Urban	Hazardous Materials Incidents - Fixed Site	Hazardous Materials Incidents - Transportation	Infrastructure Failure	Nuclear Attack	Nuclear Power Plant Incidents	Oil/Nat Gas Well Incidents	Petrol/Nat Gas Pipeline Incidents	Public Health Emergencies	Sabotage/Terrorism	Hail	Lightning	Severe Winds	Severe Winter Weather	Transportation Accidents	Tornado	Financial Assistance	Technical Assistance
FEDERAL SOURCES																											
Emergency Community Water Assistance Grants		√							√		√		√					√	√							√	
Emergency Conservation Program		√							√													√			√	√	
Emergency Flood and Shelter National Board Program	√	√	√	√	√	√	√	√	√	√	√	√	√	√	√	√	√	√	√	√	√	√	√	√	√	√	√
Emergency Management Institute-Resident Ed Program	√	√	√	√	√	√	√	√	√	√	√	√	√	√	√	√	√	√	√	√	√	√	√	√	√	√	√
Emergency Management Institute-Training Assistance	√	√	√	√	√	√	√	√	√	√	√	√	√	√	√	√	√	√	√	√	√	√	√	√	√	√	√
Emergency Management Performance Grants	√	√	√	√	√	√	√	√	√	√	√	√	√	√	√	√	√	√	√	√	√	√	√	√	√	√	√
Emergency Management-State and Local Assistance	√	√	√	√	√	√	√	√	√	√	√	√	√	√	√	√	√	√	√	√	√	√	√	√	√	√	√
Emergency Operations Flood Response and Post-Flood Response								√	√	√																√	
Emergency Rehabilitation of Flood Control Works								√	√																	√	
Engineering Grants	√	√	√	√	√	√	√	√	√	√	√	√	√	√	√	√	√	√	√	√	√	√	√	√	√	√	√
Farmland Protection Program									√																	√	
Fire Suppression Assistance							√																			√	
Fisheries Disaster Relief		√					√	√	√	√	√	√							√							√	
Flood Insurance								√	√	√																√	
Flood Mitigation Assistance									√	√																√	
Flood Plain Management Services								√	√	√																√	
Food Control Projects								√	√																	√	
Forestry Incentives Program																						√			√	√	
Forestry Research									√	√												√			√	√	
Grants for Public Works and Economic Development								√	√	√			√													√	

York Township

Funding Source	Civil Disturbance	Drought	Earthquake	Extreme Temperature	Scrap Tire Facilities	Structural Fire	Wildfire	Dam Failure	Flooding: Riverine	Flooding: Urban	Hazardous Materials Incidents - Fixed Site	Hazardous Materials Incidents - Transportation	Infrastructure Failure	Nuclear Attack	Nuclear Power Plant Incidents	Oil/Nat Gas Well Incidents	Petrol/Nat Gas Pipeline Incidents	Public Health Emergencies	Sabotage/Terrorism	Hail	Lightning	Severe Winds	Severe Winter Weather	Transportation Accidents	Tornado	Financial Assistance	Technical Assistance
FEDERAL SOURCES																											
Grants-in-Aid for Railroad Safety-State Participation												√												√			√
Habitat Conservation																											√
Hazard Mitigation Grant Program	√	√	√	√	√	√	√	√	√	√	√	√	√	√	√	√	√	√	√	√	√	√	√	√	√	√	√
HazMat Training Program for Implementation of SARA											√	√															√
Health Program for Toxic Substances and Disease Registry											√							√									√
Highway Planning and Construction													√													√	√
Historic Preservation Funds Grants-In Aid						√			√	√										√	√	√	√		√		√
HOME Investment Partnerships Program									√	√										√	√	√				√	
Hydrologic Research		√						√	√	√																	√
Individual and Family Grant Program	√	√	√				√	√	√	√																	√
Planning Grants (HazMat Emergency Preparedness Grant)											√	√															√
Motor Carrier Safety												√															√
National Dam Safety Program							√																				√
National Pollutant Discharge Elimination System Related State Program Grants																√	√	√									√
National Urban Search and Rescue Response System			√										√						√					√			√
North American Wetlands Conservation Fund								√	√																		√
Nursing Homes						√																					√
Planning (Land and Water Conservation Fund Grants)									√																		√
Physical Disaster Loans	√		√		√	√			√	√			√						√	√	√	√	√		√	√	√
Pipeline Safety																√	√										√

York Township

Funding Source	Civil Disturbance	Drought	Earthquake	Extreme Temperature	Scrap Tire Facilities	Structural Fire	Wildfire	Dam Failure	Flooding: Riverine	Flooding: Urban	Hazardous Materials Incidents - Fixed Site	Hazardous Materials Incidents - Transportation	Infrastructure Failure	Nuclear Attack	Nuclear Power Plant Incidents	Oil/Nat Gas Well Incidents	Petrol/Nat Gas Pipeline Incidents	Public Health Emergencies	Sabotage/Terrorism	Hail	Lightning	Severe Winds	Severe Winter Weather	Transportation Accidents	Tornado	Financial Assistance	Technical Assistance
FEDERAL SOURCES																											
Project Impact: Building Disaster-Resistant Communities	√	√	√	√	√	√	√	√	√	√	√	√	√	√	√	√	√	√	√	√	√	√	√	√	√	√	√
Protection Clearing and Straightening Channels									√																	√	
Protection of Essential Highways, Highway Bridge Approaches, and Public Works								√	√																	√	
Public Assistance Grant Program	√	√	√	√	√	√	√	√	√	√	√	√	√	√	√	√	√	√	√	√	√	√	√	√	√	√	√
Public Health and Social Services Emergency Fund (Post-Declaration Only)																		√								√	
Public Telecommunications Facilities Planning and Construction																								√	√		
Railroad Safety												√												√		√	
Resource Conservation and Development Rivers, Trails, and Conservation Assistance		√	√	√			√		√	√																	√
Rural Business Opportunity Grants									√																	√	
Rural Development Grants									√				√													√	
Rural Electrification Loans													√								√	√	√		√	√	
Rural Housing and Economic Development	√	√	√	√	√	√	√	√	√	√	√	√	√					√	√	√	√	√	√	√	√	√	√
Rural Housing Site Loans and Self-Help Housing and Development Loans									√																	√	
Snagging and Clearing for Flood Control							√	√																		√	
Soil and Water Conservation		√	√	√			√		√	√																	√
State and Community Highway Safety												√												√			√
State Domestic Preparedness Equipment, Support Program																			√							√	
Superfund State Site-Specific Cooperative Agreements											√							√								√	
Superfund Technical Assistance Grants for Citizen Groups at Priority Sites											√															√	√
Surveys, Studies, Investigations and Special Purpose Grants											√	√			√	√	√	√								√	

York Township

Funding Source	Civil Disturbance	Drought	Earthquake	Extreme Temperature	Scrap Tire Facilities	Structural Fire	Wildfire	Dam Failure	Flooding: Riverine	Flooding: Urban	Hazardous Materials Incidents - Fixed Site	Hazardous Materials Incidents - Transportation	Infrastructure Failure	Nuclear Attack	Nuclear Power Plant Incidents	Oil/Nat Gas Well Incidents	Petro/Nat Gas Pipeline Incidents	Public Health Emergencies	Sabotage/Terrorism	Hail	Lightning	Severe Winds	Severe Winter Weather	Transportation Accidents	Tornado	Financial Assistance	Technical Assistance
FEDERAL SOURCES																											
Technology Development for Environmental Management												√			√												√
Very Low Income Housing Repair Loans/Grants				√		√	√		√											√	√	√			√	√	
Very Low to Moderate Income Housing Loans				√		√	√		√											√	√	√			√	√	
Water and Waste Disposal System for Rural Communities									√		√		√					√	√							√	
Water/Waste Disposal Loans/Grants									√		√		√					√								√	
Watershed Protection and Flood Prevention								√	√	√								√								√	
Watershed Surveys and Planning		√							√																		√
Weatherization Assistance for Low-Income Persons				√																							√
Wetlands Protection-Development Grants									√	√																√	
Wetlands Reserve Program									√	√																√	
Wildlife Habitat Incentive Program									√																	√	

York Township

Funding Source	Civil Disturbance	Drought	Earthquake	Extreme Temperature	Scrap Tire Facilities	Structural Fire	Wildfire	Dam Failure	Flooding: Riverine	Flooding: Urban	Hazardous Materials Incidents - Fixed Site	Hazardous Materials Incidents - Transportation	Infrastructure Failure	Nuclear Attack	Nuclear Power Plant Incidents	Oil/Nat Gas Well Incidents	Petrol/Nat Gas Pipeline Incidents	Public Health Emergencies	Sabotage/Terrorism	Hail	Lightning	Severe Winds	Severe Winter Weather	Transportation Accidents	Tornado	Financial Assistance	Technical Assistance
STATE OF MICHIGAN																											
Department of Agriculture																											
Energy Conservation Program									√														√			√	√
Groundwater Stewardship Program											√							√								√	√
Intercounty Drain Program (available to Drain Commissioner only)								√	√	√																	√
Economic Development Corporation																											
Community Development Block Grant									√	√			√													√	
Urban Land Assembly									√																	√	
Environmental Quality																											
Abandoned Well Mgmt. Program																		√								√	
Alternate Water Supply Replacement Program									√	√	√		√					√								√	
Brownfield Redevelopment Grants											√							√								√	√
Drinking Water Revolving Loan Fund													√					√	√							√	
Municipal Landfill Cost-Share Grant Program																		√								√	
Non-community Water Supply Program Grant																		√								√	
Scrap Tire Collection Site Cleanup Grants					√																					√	
State Revolving Loan Fund									√	√			√					√								√	
Wellhead Protection Program									√	√								√								√	
Wetland Program Development									√	√																√	

York Township

Funding Source	Civil Disturbance	Drought	Earthquake	Extreme Temperature	Scrap Tire Facilities	Structural Fire	Wildfire	Dam Failure	Flooding: Riverine	Flooding: Urban	Hazardous Materials Incidents - Fixed Site	Hazardous Materials Incidents - Transportation	Infrastructure Failure	Nuclear Attack	Nuclear Power Plant Incidents	Oil/Nat Gas Well Incidents	Petrol/Nat Gas Pipeline Incidents	Public Health Emergencies	Sabotage/Terrorism	Hail	Lightning	Severe Winds	Severe Winter Weather	Transportation Accidents	Tornado	Financial Assistance	Technical Assistance
STATE OF MICHIGAN																											
Housing Development Authority																											
Community Development Block Grants/Housing Resource Fund						√			√	√											√	√			√	√	
Home/Property Improvement Loans						√			√	√											√	√			√	√	
Department of Natural Resources																											
Habitat Improvement Fund Project Grants									√																		√
Land and Water Conservation Fund									√																		√
Natural Resources Trust Fund						√			√																		√
Recreational Trails Program Grants									√																		√
Urban and Community Forestry Program																						√	√			√	√
Volunteer Fire Assistance					√	√	√																				√
State Police																											
Emergency Management Performance Grants	√	√	√	√	√	√	√	√	√	√	√	√	√	√	√	√	√	√	√	√	√	√	√	√	√	√	√
Flood Mitigation Assistance									√	√																	√
Hazard Mitigation Grant Program	√	√	√	√	√	√	√	√	√	√	√	√	√	√	√	√	√	√	√	√	√	√	√	√	√	√	√
Individual and Family Grant Program									√	√			√														√

York Township

Funding Source	Civil Disturbance	Drought	Earthquake	Extreme Temperature	Scrap Tire Facilities	Structural Fire	Wildfire	Dam Failure	Flooding: Riverine	Flooding: Urban	Hazardous Materials Incidents - Fixed Site	Hazardous Materials Incidents - Transportation	Infrastructure Failure	Nuclear Attack	Nuclear Power Plant Incidents	Oil/Nat Gas Well Incidents	Petrol/Nat Gas Pipeline Incidents	Public Health Emergencies	Sabotage/Terrorism	Hail	Lightning	Severe Winds	Severe Winter Weather	Transportation Accidents	Tornado	Financial Assistance	Technical Assistance
STATE OF MICHIGAN																											
State Police (continued)																											
Interagency HazMat Public Sector Training and Planning Grants (HazMat Emergency Preparedness Grant)											√	√		√	√	√	√									√	
Project Impact	√	√	√	√	√	√	√	√	√	√	√	√	√	√	√	√	√	√	√	√	√	√	√	√	√	√	√
Public Assistance Grant Program	√	√	√	√	√	√	√	√	√	√	√	√	√	√	√	√	√	√	√	√	√	√	√	√	√	√	√
Department of Transportation																											
Rail Loan Assistance Program												√	√													√	
Trans. Econ. Development Fund								√	√	√																√	
Department of Treasury																											
Municipal Bond Authority-Local Government Loan Program				√		√			√	√			√						√	√	√	√	√	√		√	
Municipal Bond Authority-State Aid Note Program				√		√			√	√			√						√	√	√	√	√	√		√	