

# HAZARD MITIGATION PLAN for Lyndon Township

October 2004



HAZARD MITIGATION PLAN ADOPTION AND RESOLUTION  
FOR LYNDON TOWNSHIP

Whereas Lyndon Township, Michigan has experienced disasters that have resulted in loss of life or injury, damaged commercial, residential and public properties, displaced citizens and businesses, closed streets and bridges, and presented general public health and safety concerns; and

Whereas as of November of 2004, the Federal Emergency Management Agency (FEMA) requires that communities have an adopted Hazard Mitigation Plan as a requirement to receiving funding under certain FEMA programs,

Whereas the *Hazard Mitigation Plan* ranks hazards for the community, and identifies goals, objectives and strategies to reduce overall damage and impact from natural and technological hazards; and

Whereas Lyndon Township has worked with Washtenaw County to prepare a *Hazard Mitigation Plan*, by participating in the planning process and providing comments with respect to hazards, vulnerable areas, and strategies,

Whereas residents, community officials, business owners, educational institutions neighboring jurisdictions and the Michigan State Police Division of Emergency Management have had the opportunity to review the plan and their comments have been incorporated;

Now, therefore, be it resolved that:

1. The Hazard Mitigation Plan is hereby adopted as an official plan of Lyndon Township.
2. The Hazard Mitigation Plan will be an annual agenda item for the Lyndon Township Board of Trustees to review. The annual review shall include the following:
  - a. A review of the original plan.
  - b. A review of any disasters or emergencies that occurred during the previous calendar year.
  - c. A review of actions taken, including what was accomplished during the previous year.
  - d. A discussion of any implementation problems.
  - e. Recommendations for new projects or revised actions items. Such recommendations shall be subject to approval by the Lyndon Township Board of Trustees.

3. The Hazard Mitigation Plan will be updated every five years as required by FEMA, with the assistance of Washtenaw County.
4. The Lyndon Township Supervisor will be responsible for ensuring that the strategies in the Plan are implemented, with the understanding that implementation is based on the availability of funding and staff resources.

The Lyndon Township Board of Trustees has established their ranking the Top-Ten Hazards to Lyndon Township residents as follows:

1. Convective Weather
2. Severe Winter Weather Hazards (Snow Storms and Ice/Sleet Storms)
3. Hazardous Materials Incidents: Transportation
4. Infrastructure Failures
5. Transportation Accidents: Air and Land
6. Fire Hazards: Wildfires
7. Petroleum and Natural Gas Pipeline Accidents
8. Extreme Temperatures
9. Public Health Emergencies
10. Hazardous Materials Incidents: Fixed Site

The foregoing resolution offered by Board Member Kathryn Francis and supported by Board Member Linda Reilly.

Upon roll call vote: "Aye" 5  
"Nay" 1

Roll Call Vote: Reilly-Aye, Maze-Aye, Francis-Aye, Shanahan-Aye and Noah-Aye.

The Supervisor declared the resolution adopted.

  
Clerk

CERTIFICATE

I, Linda Reilly, the duly elected and acting Clerk of Lyndon Township, hereby certify that the foregoing resolution was adopted by the Township Board of said Township at the regular meeting of said Board held on October 12, 2004, at which meeting a quorum was present, by a roll call vote of said members as hereinbefore set forth, that said resolution was ordered to take immediate effect.

  
Clerk

## Table of Contents

|   | Page |
|---|------|
| 1.0 INTRODUCTION_____   | 1    |
| 1.1 Purpose_____  | 1    |
| 1.2 Plan Organization_____                                    | 1    |
| 1.3 Public Participation_____                                 | 1    |
| 2.0. COMMUNITY PROFILE_____                                   | 3    |
| 2.1 Historic Overview_____                                    | 3    |
| 2.2 Natural Features_____                                     | 3    |
| 2.3 Land Use Patterns_____                                    | 3    |
| 2.4 Transportation_____                                       | 3    |
| 3.0 HAZARDS_____  | 4    |
| 3.1 Hazard Ranking_____                                       | 4    |
| 3.2 Hazard Assessment_____                                    | 4    |
| 4.0 HAZARD GOALS, OBJECTIVES AND STRATEGIES_____              | 7    |
| 4.1 Non-Hazard Specific Goals, Objectives and Strategies_____ | 7    |
| 4.2 Hazard Specific Goals, Objectives and Strategies_____     | 7    |
| 5.0 IMPLEMENTATION, AND MONITORING_____                       | 12   |
| 5.1 Implementation_____                                       | 12   |
| 5.2 Sources of Financial Assistance_____                      | 13   |
| 5.3 Monitoring_____   | 13   |

### Tables

|  |   |
|--|---|
| Table 1: Hazard Ranking Table_____             | 4 |
| Table 2: Vulnerability Assessment Summary_____ | 5 |

### Figures

|   |   |
|---|---|
| Figure 1: Natural Features_____                               | 2 |
| Figure 2: Assets_____   | 6 |
| Figure 3: Tornado Warning Siren Coverage and Past Events_____ | 8 |

### Attachments

- Attachment 1: County Hazard Plan
- Attachment 2: Federal and State Funding Sources

# Lyndon Township

# Lyndon Township

## 1.0 INTRODUCTION

Hazard Mitigation is defined as any action taken before, during or after a disaster to permanently eliminate or reduce risks to human life and property from natural, technical or societal hazards. Lyndon Township has experienced hazards at varying degrees, and can expect to encounter hazards in the future. The value of a Multi-Hazard Mitigation Plan (Plan) lies in reducing future emergencies to events; by implementing mitigation strategies set forth in this Plan, the expectation is for hazard occurrences to result in fewer deaths and injuries to people, and lessened damage or destruction to structures and the environment. Response and recovery costs should also be reduced.

The Federal Emergency Management Agency (FEMA) provides assistance to local units of government when faced with disasters through the Robert T. Stafford Disaster Relief and Emergency Assistance Act the Stafford Act. Recognizing that planning for hazards is an important component of hazard preparedness, response and recovery programs, the Stafford Act was amended in 2000 to require governments to have an adopted Hazard Mitigation Plan as condition of receiving financial assistance through the FEMA Hazard Mitigation Grant Program by November of 2004.

### 1.1 Purpose

There are three purposes of this Plan: 1) to identify and rank hazards in Lyndon Township; 2) to analyze areas particularly vulnerable to hazards; and 3) to identify feasible mitigation strategies that can be acted upon after adoption of the Plan. The mitigation goals and strategies should also be incorporated into the Lyndon Township General Development Plan, and other plans, as applicable.

## 1.2 Plan Organization

This Plan was prepared by Washtenaw County on behalf of Lyndon Township. Individual plans were prepared for each local unit of government in recognition of their unique circumstances and potential differences in priorities, goals and mitigation strategies. General information, such as community profile data and hazard descriptions, is contained in the County plan (Attachment 1).

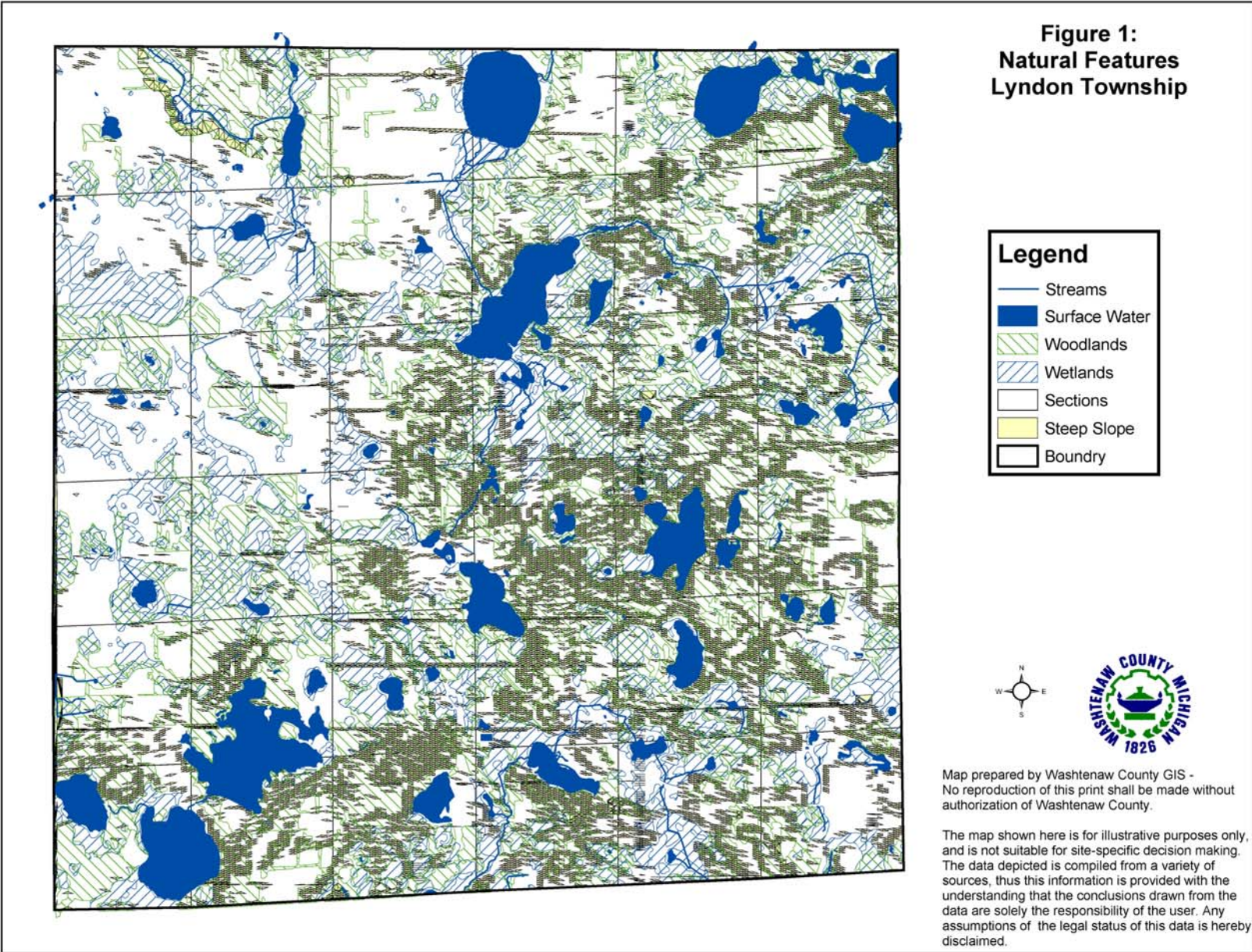
## 1.3 Public Participation

Representatives from Lyndon Township worked with the Washtenaw County Emergency Management Division and Department of Planning and Environment to draft the hazard mitigation plan. An opportunity for the citizens of Township to comment on the draft plan was provided in June of 2004, when five regional planning workshops were held at various locations around the county in conjunction with the Comprehensive Plan for Washtenaw County. Another workshop was held on June 9, 2004 for commission, board and council members from every community. The draft plan was introduced and copies were available for review at every workshop. Regional workshops were advertised in the local newspapers.

The Township Board of Trustees also provided an opportunity for public comment prior to adopting the plan on October 12, 2004.

Continued public participation is encouraged through Washtenaw County through website postings, emails, and general contact with local governments. Any comments received by the County on the plan concerning Lyndon Township area will be shared with the Township.

# Lyndon Township



# Lyndon Township

## 2.0 Community Profile

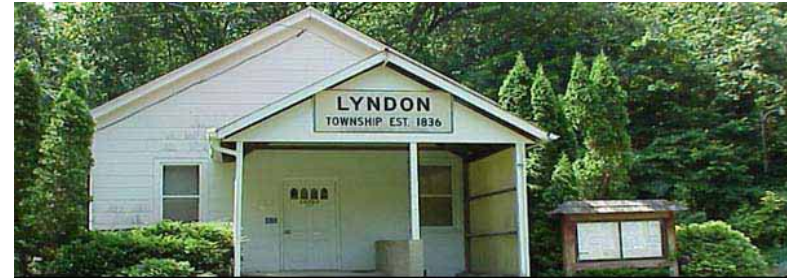
### 2.1 Historic Overview

Lyndon Township was established in 1835. Previously, it belonged to Dexter Township, along with Webster, Scio, Lima, Freedom, Bridgewater, Manchester, Sharon and Sylvan Townships. The region attracted settlers for its agricultural value, as well as water resources. In the early days, Lyndon Township was described as being very fertile, with commodities including wheat, potatoes, wool and fruit. The first pioneers in Lyndon had such a successful wheat crop that the area was referred to as the “Promised Land.”

### 2.2 Natural Features

Lyndon Township is rich with natural features and parklands. More than thirty named lakes exist in Lyndon Township with the majority exceeding ten acres in size. The lakes are joined through a network system of streams and wetlands. Nearly the entire township drains into the Huron River, which in turn, flows into Lake Erie. There are no mapped floodplains within Lyndon Township.

Wetlands and Woodlands are a dominant natural feature (Figure 1). While some woodlands and wetlands areas are small pockets, majority of these are part of an expansive network across the township. A large groundwater recharge area is located in the Township. Most and falls within the Boyer-Spinks-Houghton Association, which consists of nearly level poorly drained organic soils. Soils with severe septic limitations are more prevalent in the county. Steep slopes are scattered throughout area, with slopes of 12% or greater covering most of the Township.



Lyndon Township Hall

### 2.3 Land Use Patterns

Lyndon Township totals approximately 22,500 acres. The Township is known for its large abundance of State Park; over half of Lyndon Township land is owned by the State for recreational purposes: the Pinckney State Recreation area and Waterloo State Recreation Area. Other land is characterized as agriculture, and low density residential. Higher density residential development is located around the Township’s many lakes.

### 2.4 Transportation Network

The transportation network includes minor arterials, major and minor collectors and local streets and roads. There is one major state highway (M-52), which bisects the Township. The community does not have an airport or railroads.

# Lyndon Township

## 3.0 HAZARDS

Lyndon Township is susceptible to a variety of natural, technological, and societal hazards. The purpose of this section is to rank the hazards for Lyndon Township, analyze the risks for each hazard, and identify vulnerable areas for the Township, and appropriate goals and mitigation strategies for certain hazards.

### 3.1 Hazard Ranking

The ranking of hazards for Lyndon Township is presented as Table 1. The ranking of hazards was determined on a county-wide basis, and adjusted based on input from Local Units of Government. The ranking order was developed by the Washtenaw County Emergency Management Division using a program provided by the Michigan State Police Emergency Management Division. The model takes into account worst-case scenario data for frequency of occurrence, likelihood of occurrence, significance of impact/threat, potential size of geographic area impacted and total population impacted.

### Hazard Assessment

The purpose of the hazard assessment is to map out where hazards exist and gain information about their frequency of occurrence, and potential for harm using worst-case scenario estimates. Different levels of risk analysis are performed, depending on the significance of the hazard for the community:

- **Cursory:** A short statement explaining why the hazard is not a threat, prepared for hazards that have little impact or are unlikely to occur.
- **Standard:** An explanation of concerns with limited quantitative research, prepared for hazards likely to occur and impact our communities.

**Table 1: Hazard Ranking**

| Hazard  | Rank |
|---|------|
| Convective Weather<br>(Severe Winds, Tornadoes, Lightning, Hail)    | 1    |
| Hazardous Materials Incidents: Transportation                       | 2    |
| Infrastructure Failures   | 3    |
| Severe Winter Weather Hazards<br>(Snow Storms and Ice/Sleet Storms) | 4    |
| Hazardous Materials Incidents: Fixed Site                           | 5    |
| Transportation Accidents: Air and Land                              | 6    |
| Extreme Temperatures  | 7    |
| Flood Hazards: Riverine/Urban Flooding                              | 8    |
| Public Health Emergencies   | 9    |
| Petroleum and Natural Gas Pipeline Accidents                        | 10   |
| Fire Hazards: Wildfires   | 11   |
| Fire Hazards: Structural Fires                                      | 12   |
| Flood Hazards: Dam Failures   | 13   |
| Sabotage & Terrorism  | 14   |
| Drought   | 15   |
| Earthquakes   | 16   |
| Nuclear Attack  | 17   |
| Nuclear Power Plant Accidents                                       | 18   |
| Civil Disturbances  | 19   |
| Oil and Gas Well Accidents  | 20   |
| Fire Hazards: Scrap Tire Fires                                      | 21   |

# Lyndon Township

- **Advanced (Vulnerability):** A vulnerability determination using probabilities, prepared for hazards that have the highest frequency of occurrence and/or the most potential to cause death, injury or damage to personal property.

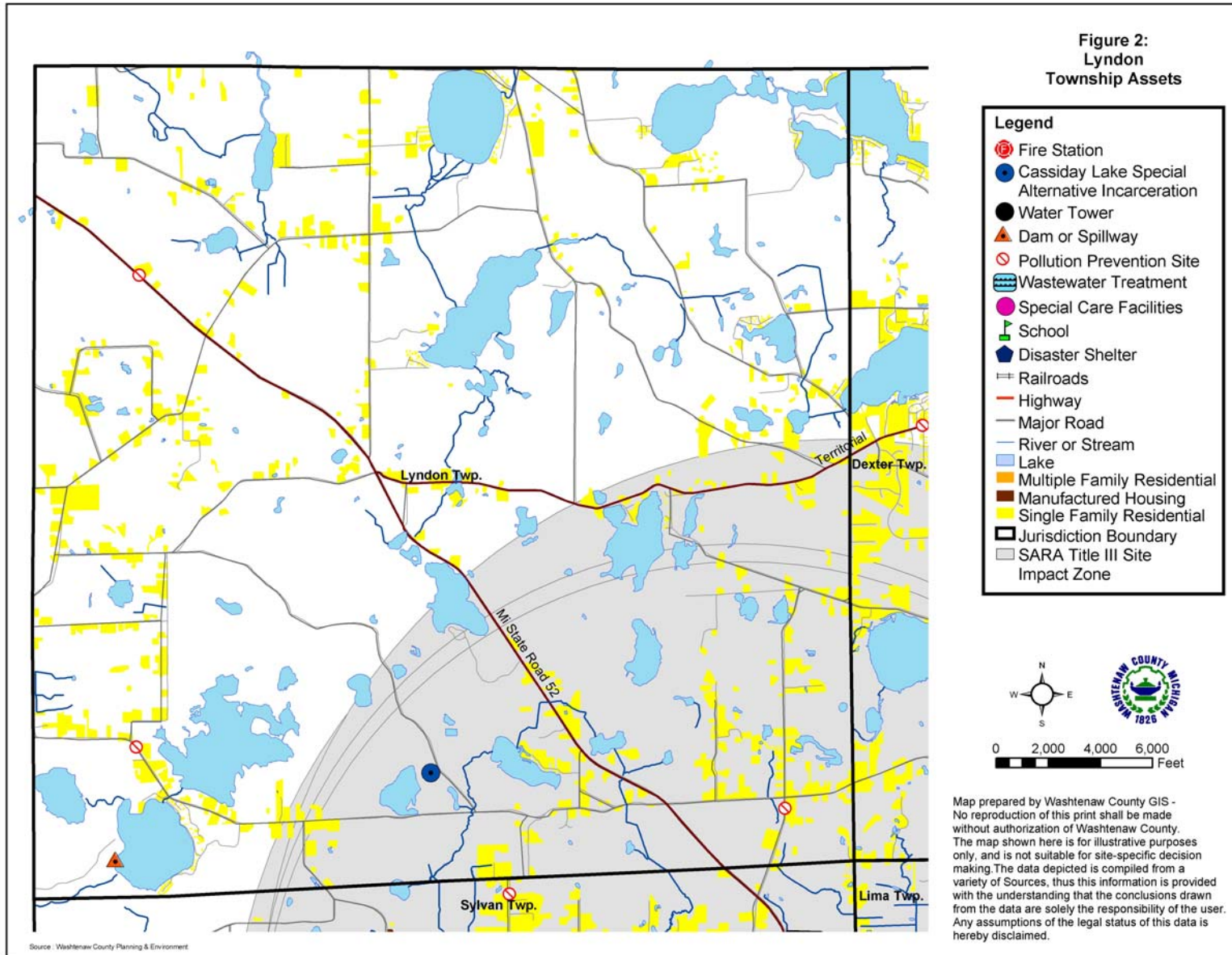
Vulnerability assessments were prepared for convective weather, hazardous materials transportation incidents, hazardous materials fixed site incidents, infrastructure failures and severe winter weather hazards. The goal is to quantitatively measure the threat experienced by Washtenaw County communities. By placing a monetary value on a hazard, a cost-benefit comparison can be made: the benefit of implementing a mitigation strategy compared to the cost of the hazard event.

Table 2 presents the results of the vulnerability assessment. The value of the vulnerability assessment is to provide a cost by which the mitigation strategies may be compared. A discussion of the determination is provided in the hazard section of the County Plan (Section 3.2). The methodology for each is presented in Appendix A of the County Plan.

**Table 2. Vulnerability Assessment Summary**

| Rank      | Hazard   | Estimated Annual Cost |
|-----------|--|-----------------------|
| <b>#1</b> | <b>Convective Weather</b>                          |                       |
|           | Tornado  | \$5,078,755           |
|           | Severe Winds and Lightning                         | \$90,242,418          |
|           | Hail Storm   | \$3,738,153           |
| <b>#2</b> | <b>Hazardous Material Transportation Incidents</b> | \$6,838,963           |
| <b>#3</b> | <b>Hazardous Material Fixed Site Incidents</b>     | \$2,913,038           |
| <b>#4</b> | <b>Severe Winter Weather</b>                       | \$36,191,763          |
| <b>#5</b> | <b>Infrastructure Failure</b>                      | \$6,139,214           |

# Lyndon Township



## 4.0 Hazard Goals and Strategies

The following sections present goals and strategies by hazard. Figure 2 presents the assets and hazards identified for Lyndon Township, and may be referred to in the following sections. Table 3 presents a summary of the mitigation strategies detailed for each hazard. The goals, objectives and strategies are not an inclusive list; rather the goals, objectives and strategies are those that the Township is focusing on at this time.

Where possible, cost estimates were provided for the strategy. The repetition of strategies reflects the need for their implementation, not the duplication of services. For example, distribution of educational materials should not be performed several times, throughout the year per hazard, rather one mailing regarding family preparedness kits would address all hazards for which this strategy is listed.

### 4.1 Non-Hazard Specific Goals and Strategies

Goal: Integrate mitigation strategies into the Township General Development Plan

#### Mitigation Strategy: Plans

- Establish a committee charged with amending the Township's General Development Plan to include hazard mitigation goals and strategies, as applicable.

### 4.2 Hazard-Specific Goals and Strategies

#### **Convective Weather**

Lyndon Township is very vulnerable to convective weather events. Most storms come in from the northwest, placing it on the front-line of hazardous weather events. Lyndon Township does not have any warning sirens to alert residents and park visitors of impending storms (Figure 3).

Goal: Reduce the Township's vulnerability to convective weather storm hazards, minimize loss of life and injury, and damage to public property.

#### Mitigation Strategy: Warning Sirens

Secure funding for installation of warning sirens. Currently none of the Township is covered by a warning siren. Sirens should be placed to maximize coverage to special populations, and include any key Township facilities (i.e. those that may be host to larger population concentrations).

#### Mitigation Strategy: Emergency Generators

- Secure funding to install emergency generators. At least one emergency generator should be installed at the Township Hall in order to provide shelter or relief to Township residents.

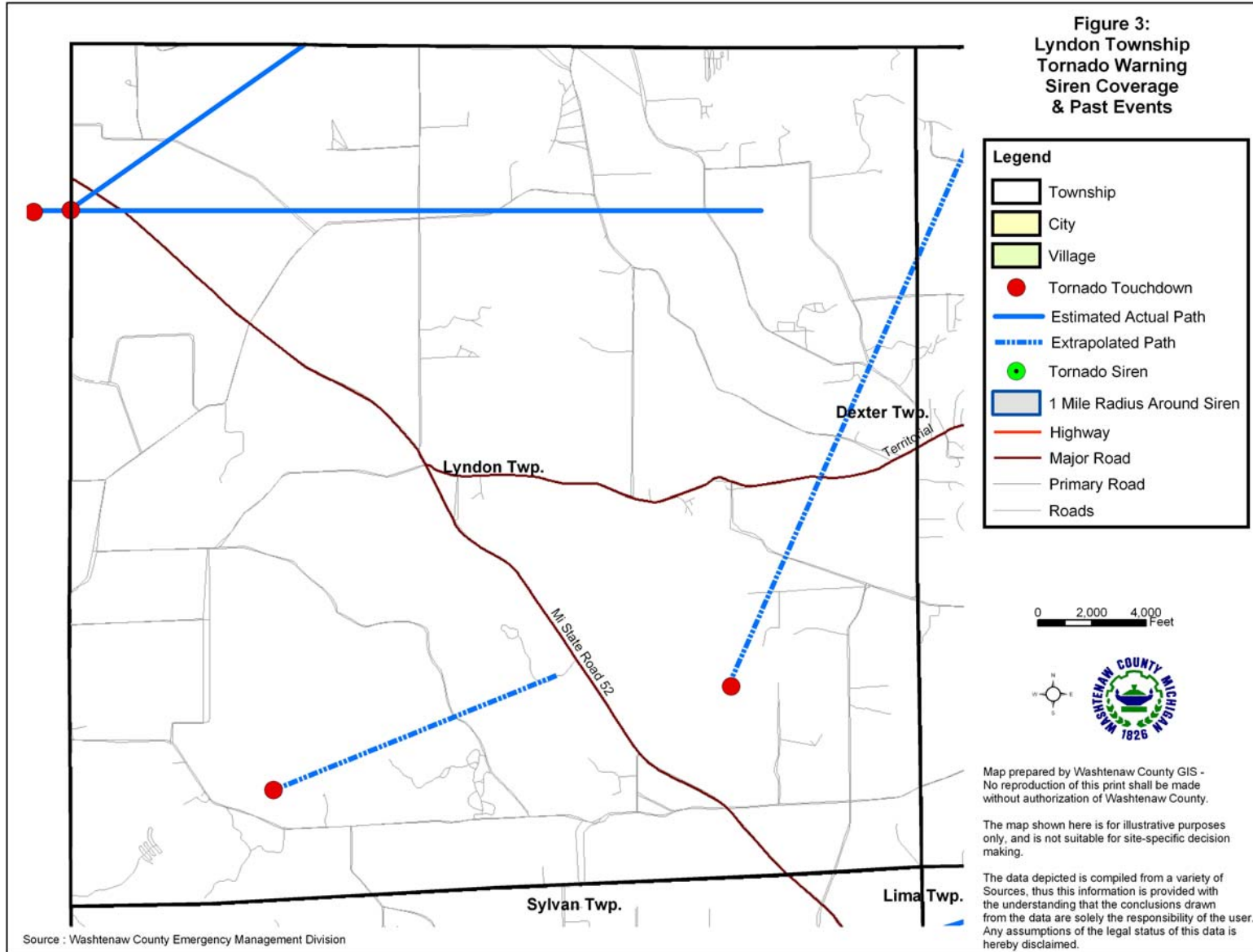
#### Mitigation Strategy: Public Education

- Distribute Emergency Preparedness materials to Township residents, informing them on actions to take during an event, or actions to minimize damage caused by an event (see Family Preparedness Kit information box). Methods to disseminate the information include: an on-line link to Washtenaw County's Emergency Management website; mention within an existing newsletter; a separate mailing; or an enclosure in an annual Township mailing (e.g. tax bills).

#### Mitigation Strategy: Maintenance

- Distribute annual reminders to ground utility providers, encouraging them to keep power lines clear of trees and tree limbs. This would reduce the chance of electrical power failure for Townships residents and businesses.

# Lyndon Township



# Lyndon Township

## Mitigation Strategy: Training

- Continue to work with Washtenaw County Division of Emergency Management on weather spotter training and coverage. Estimated cost: \$0; training is free of charge to anyone 18 years of age or older who is interested in being trained in severe weather identification, protection, and reporting procedures.

## **Hazardous Materials Incidents - Transportation**

State Road M-52 is a major thoroughfare, traversing the Township on a southeast/northwest diagonal.

Goal: Reduce the risk of damage, loss of life, and other costs resulting from hazardous material transportation incidents

## Mitigation Strategy: Warning Sirens

- Secure funding for installation of warning sirens. See strategy under Convective Weather for further discussion.

## Mitigation Strategy: Emergency Generators

- Secure funding to install emergency generators. See Mitigation Strategy 2 under Convective Weather for further discussion.

## Mitigation Strategy: Training

- Continue to support training and equipment for the Chelsea Area Fire Authority.

## Mitigation Strategy: Hazardous Spills Expense Recovery Ordinance

- Adopt the Hazardous Spills Expense Recovery Ordinance, a vehicle whereby a local unit of government may recover costs of response and recovery to a release of hazardous materials.

## **Family Preparedness Kits**

1. Have Emergency Supplies at the ready:
  - A three-day supply of water one gallon/person/day and food that won't spoil
  - One change of clothing, footwear, and blanket/sleeping bag per person
  - First aid kit including family prescription medications
  - Tools: flashlight, battery-powered radio and extra batteries
  - Extra car keys, credit cards, cash or travelers checks
  - Sanitation supplies
  - Special items for infant, elderly or disabled family members
  - Extra pair of glasses
  - Locate the fuse box water service main and natural gas main and learn how to turn on and off.
2. Create a disaster plan where to meet, contact numbers, who will take care of the family pet, take first aid, learn how to use a fire extinguisher, etc.
3. Practice the Plan and maintain supplies!

If having electric power is extremely important to you, consider having a qualified electrician install an emergency generator before a disaster strikes!

For more information, see FEMA's website at <http://www.fema.gov/pdf/library/yfdp.pdf>

# Lyndon Township

## **Hazardous Materials Incidents - Fixed Site**

There are residences located in Lyndon Township may that store hazardous materials, or other unknown materials that could pose a hazard. Such areas have the potential to impact surrounding residences and air, water ways and land resources.

Goal: Reduce the risks of hazardous material fixed site incidents in the Township by reducing the potential for incidences to occur and increasing the ability to respond to such incidences

### Mitigation Strategy: Warning Sirens

- Secure funding for installation of warning sirens. See strategy under Convective Weather for further discussion.

### Mitigation Strategy: Emergency Generators

- Secure funding to install emergency generators. See strategy under Convective Weather for further discussion.

### Mitigation Strategy: Training and Support

- Ensure that the Hazardous Material Response Team is knowledgeable of the locations and chemicals stored at various locations.
- Support and cooperate with the Washtenaw County Pollution Prevention Program.
- Continue to participate in the implementation of the Washtenaw County Emergency Action Guidelines.

### Mitigation Strategy: Hazardous Spills Expense Recovery Ordinance

- Adopt the Hazardous Spills Expense Recovery Ordinance, a vehicle whereby a local unit of government may recover costs of response and recovery to a release of hazardous materials.

### Mitigation Strategy: Assistance to Residents

- Obtain funding, technical or legal assistance to ensure that residents maintain safe practices with regard to private gas wells or other non-traditional practices.

## **Severe Winter Weather Hazard**

Above ground power supply, coupled with mature trees can be a disaster when heavy snows or freezing rain occurs. The weight of the frozen precipitation causes tree limbs to fall on power lines, causing power outages, which is a significant problem. Loss of power in the winter generally means loss of heat for citizens. Falling tree limbs also damage property, block emergency routes and roadways, endanger lives and are very costly to clean up and remove.

Goal: Reduce the damage and impacts caused by severe winter weather hazards continue to reduce the impact of such an event on the community.

### Mitigation Strategy: Emergency Generators

- Secure funding to install emergency generators. At least one emergency generator should be installed at the Township Hall in order to provide shelter, warming and relief to Township residents.

# Lyndon Township

## Mitigation Strategy: Maintenance

- Distribute annual reminders to ground utility providers, encouraging them to keep power lines clear of trees and tree limbs, specifying addresses and locations of problem trees.

## Mitigation Strategy: Public Education

- Distribute Emergency Preparedness information. See strategy under Convective Weather for further discussion.

## **Infrastructure Failure**

Goal: Decrease the Township's vulnerability to infrastructure failures and continue to strengthen the Township's ability to assist its citizens during an event.

## Mitigation Strategy: Emergency Generators

- Secure funding to install emergency generators. See strategy under Convective Weather for further discussion.

## Mitigation Strategy: Maintenance

- Distribute annual reminders to ground utility providers, encouraging them to keep power lines clear of trees and tree limbs, specifying addresses and locations of problem trees.

## Mitigation Strategy: Public Education

- Distribute Emergency Preparedness information. See strategy under Convective Weather for further discussion.

## **Petroleum and Natural Pipeline Gas Accidents**

There are pipelines traversing the Township. Incidences have the ability to impact large numbers of residents.

**Goal: Reduce the potential harm from petroleum and natural gas pipeline accidents.**

## Mitigation Strategy: Training

- Continue to train, equip and maintain a Hazardous Material Response Team through the City of Chelsea Fire Department.

## Mitigation Strategy: Public Education

- Distribute Emergency Preparedness information. See strategy under Convective Weather for further discussion.
- Disseminate information regarding indicators of a leak, and safety measures in the event of a pipeline accident.

## Mitigation Strategy: Enforcement

- Support and enforce buffer distances from pipelines to minimize the population impacted in the event of a Petroleum and Natural Gas Pipeline Accident. Residential development near the location of petroleum and natural gas pipelines is a growing issue.

# Lyndon Township

## 5.0 Implementation, Funding and Monitoring

The purpose of this plan is to identify mitigation strategies that will be implemented before, during or after a disaster to permanently eliminate or reduce risks to human life and property from natural, technical or societal hazards. The following sections present implementation actions, funding sources, and the method for monitoring the plan.

### 5.1 Implementation

The following schedule is given for hazard mitigation strategies described in Section 4.0. Completion dates have not been included as such dates are subject to uncertain factors, and will only begin after the mitigation strategy has been approved. While all strategies are important, priority is has been given to those that may be funded by a FEMA hazard mitigation grant program (see Section 5.2). Action on strategies will depend upon staff, resource and funding availability.

#### High Priority Strategies

##### Warning Sirens

*Responsible Agencies:* Lyndon Township and Washtenaw County Emergency Management Division

*Estimated Cost:* \$18,000 for siren and first year of maintenance fees, \$500 annually thereafter (does not include replacement parts).

##### Emergency Generators

*Responsible Agencies:* Lyndon Township and Washtenaw County Emergency Management Division

*Estimated Cost:* \$15,000-20,000 per generator.

#### Other Important Strategies

##### Public Education (dissemination of family preparedness information)

*Responsible Agency:* Lyndon Township

*Estimated Cost:* \$5,000 annually.

##### Training and Support

- Continued training, equipment and maintenance for County and Chelsea Area Fire Authority Hazardous Material Response Teams.
- Continue to participate with the Washtenaw County Emergency Action Guidelines
- Encourage residents to attend Washtenaw County Emergency Management Division Skywarn Spotter Training Program (free to residents 18 years and older)
- Encourage businesses to work with the Washtenaw County Pollution Prevention Program.

*Responsible Agency:* Lyndon Township

*Estimated Cost:* NA

##### Provide Assistance to Residents with Site-Specific Issues

- Property owners in Lyndon Township may have issues on their property that make them more at-risk to a particular hazard, such as on-site storage of hazardous materials. The Township may partner with the County to assist residents with compliance to existing regulations, and thereby reduce the potential for a hazardous event.

*Responsible Agencies:* Lyndon Township and Washtenaw County Emergency Management Division

*Estimated Cost:* Staff time.

##### Adopt Spill Expense Recovery Ordinance

*Responsible Agency:* Lyndon Township

*Estimated Cost:* Staff time.

## Maintenance Reminders to Utility Providers

*Responsible Agency:* Lyndon Township

*Estimated Cost:* Staff time.

## Amend Master Plan to incorporate hazard mitigation goals, strategies

*Responsible Agency:* Lyndon Township

*Estimated Cost:* Staff time.

### **5.2 Sources of Financial Assistance**

Implementation of the mitigation strategies is often dependent on funding assistance from Federal and State sources. FEMA provides funding for structural projects through the hazard mitigation grant programs. These include the Hazard Mitigation Grant Program, Pre-Disaster Mitigation Assistance Program, and the Flood Mitigation Assistance Program.

FEMA emphasizes the implementation of structural mitigation strategies. The strategies that are a priority for FEMA are not a priority for Lyndon Township at this time. The strategies listed in this plan that qualify for FEMA funds include emergency generators and warning sirens.

Financial support for other mitigation strategies proposed in this plan may be sought through alternative funding sources. For example, funds for public outreach, equipment and training may be obtained through the FEMA Emergency Management Performance Grant (EMPG). Projects may be implemented with the assistance of non-profit organizations, or funds secured from Community Foundations. There are many State and Federal programs that are available to local governments, as provided in Attachment 2.

### **5.3 Monitoring of the Plan**

The plan will be monitored on a regular basis, and is the responsibility of the Lyndon Township Supervisor. The plan will be an annual agenda item for the Lyndon Board of Trustees. At a minimum, during its review, the Board will discuss the monitoring of the plan, the number of projects pursued, or reasons for lack of pursuit for approved projects. Prior to the meeting, the Washtenaw County Emergency Management Division can be contacted for updates or recommended amendments to the plan.

To assist with the annual evaluation and review of the plan, the Township may consider forming a local hazard mitigation committee. The committee could also be charged with identifying methods of obtaining public input.

Although review of the plan will occur annually, and a formal revision may not be needed each year, an update of the plan will be prepared every five years, based on annual reviews, amendments, monitoring, evaluation and accumulation of official feedback and public input. The revised plan will again be adopted by the Lyndon Township Board of Trustees.



**Attachment 1  
County Hazard Plan**



**Attachment 2  
Alternative Funding Sources**

# Lyndon Township

| Funding Source   | Civil Disturbance | Drought | Earthquake | Extreme Temperature | Scrap Tire Facilities | Structural Fire | Wildfire | Dam Failure | Flooding: Riverine | Flooding: Urban | Hazardous Materials Incidents - Fixed Site | Hazardous Materials Incidents - Transportation | Infrastructure Failure | Nuclear Attack | Nuclear Power Plant Incidents | Oil/Nat Gas Well Incidents | Petrol/Nat Gas Pipeline Incidents | Public Health Emergencies | Sabotage/Terrorism | Hail | Lightning | Severe Winds | Severe Winter Weather | Transportation Accidents | Tornado | Financial Assistance | Technical Assistance |
|--|-------------------|---------|------------|---------------------|-----------------------|-----------------|----------|-------------|--------------------|-----------------|--|--|------------------------|----------------|-------------------------------|----------------------------|-----------------------------------|---------------------------|--------------------|------|-----------|--------------|-----------------------|--------------------------|---------|----------------------|----------------------|
| <b>FEDERAL SOURCES</b>   |                   |         |            |                     |                       |                 |          |             |                    |                 |  |  |                        |                |                               |                            |                                   |                           |                    |      |           |              |                       |                          |         |                      |                      |
| Business and Industry Loans  | √                 | √       | √          | √                   | √                     | √               | √        | √           | √                  | √               | √  | √  | √                      | √              | √                             | √                          | √                                 | √                         | √                  | √    | √         | √            | √                     | √                        | √       | √                    | √                    |
| CDC-Investigations and Technical Assistance                        |                   |         |            |                     |                       |                 |          |             |                    |                 |  |  |                        |                |                               |                            |                                   | √                         |                    |      |           |              |                       |                          |         |                      | √                    |
| CEPP Technical Assistance Grants Program                           |                   |         |            |                     |                       |                 |          |             |                    |                 | √  | √  |                        |                |                               |                            |                                   | √                         |                    |      |           |              |                       |                          |         | √                    | √                    |
| Community Assistance Program-State Support Services Element (NFIP) |                   |         |            |                     |                       |                 |          | √           | √                  | √               |  |  |                        |                |                               |                            |                                   |                           |                    |      |           |              |                       |                          |         |                      | √                    |
| Community Development Block Grant/Economic Development Initiative  |                   |         |            |                     |                       |                 |          |             | √                  | √               |  |  | √                      |                |                               |                            |                                   |                           |                    |      |           |              | √                     |                          |         |                      | √                    |
| Community Development Block Grant/Entitlement Grants               | √                 | √       | √          | √                   | √                     | √               | √        | √           | √                  | √               | √  | √  | √                      |                |                               |                            |                                   | √                         | √                  | √    | √         | √            | √                     | √                        | √       | √                    | √                    |
| Community Development Block Grant/Small Cities Program             | √                 | √       | √          | √                   | √                     | √               | √        | √           | √                  | √               | √  | √  | √                      |                |                               |                            |                                   | √                         | √                  | √    | √         | √            | √                     | √                        | √       | √                    | √                    |
| Community Development Block Grant/State's Program                  | √                 | √       | √          | √                   | √                     | √               | √        | √           | √                  | √               | √  | √  | √                      |                |                               |                            |                                   | √                         | √                  | √    | √         | √            | √                     | √                        | √       | √                    | √                    |
| Community Disaster Loans   | √                 | √       | √          | √                   | √                     | √               | √        | √           | √                  | √               | √  | √  | √                      | √              | √                             | √                          | √                                 | √                         | √                  | √    | √         | √            | √                     | √                        | √       | √                    | √                    |
| Community Facilities Loans and Grants                              | √                 | √       | √          | √                   | √                     | √               | √        | √           | √                  | √               | √  | √  | √                      | √              | √                             | √                          | √                                 | √                         | √                  | √    | √         | √            | √                     | √                        | √       | √                    | √                    |
| Community Outreach Partnership Center Program                      | √                 | √       | √          | √                   | √                     | √               | √        | √           | √                  | √               | √  | √  |                        |                |                               |                            |                                   | √                         | √                  | √    | √         | √            | √                     | √                        | √       | √                    | √                    |
| Conservation Reserve Program                                       |                   |         |            |                     |                       |                 |          |             | √                  | √               |  |  |                        |                |                               |                            |                                   |                           |                    |      |           |              |                       |                          | √       | √                    | √                    |
| Cooperative Forestry Research                                      |                   |         |            |                     |                       |                 | √        |             |                    |                 |  |  |                        |                |                               |                            |                                   |                           |                    |      |           |              |                       |                          |         | √                    |                      |
| Cora Brown Fund  | √                 | √       | √          | √                   | √                     | √               | √        | √           | √                  | √               | √  | √  |                        |                | √                             | √                          | √                                 | √                         | √                  | √    | √         | √            | √                     | √                        | √       | √                    | √                    |
| Direct Housing Natural Disaster (Very Low/Low Income Loans)        |                   |         |            |                     |                       |                 | √        | √           |                    |                 |  |  |                        |                |                               |                            |                                   |                           |                    | √    | √         | √            |                       |                          | √       | √                    |                      |
| Disaster Housing Program   | √                 | √       | √          | √                   | √                     | √               | √        | √           | √                  | √               | √  | √  | √                      | √              | √                             | √                          | √                                 | √                         | √                  | √    | √         | √            | √                     | √                        | √       | √                    | √                    |
| Disposal of Federal Surplus Property (Transfers)                   |                   |         |            |                     |                       |                 |          |             | √                  |                 |  |  |                        |                |                               |                            |                                   |                           |                    |      |           |              |                       |                          |         |                      |                      |
| Economic Adjustment Assistance                                     |                   |         |            |                     |                       |                 |          | √           | √                  | √               |  |  |                        |                |                               |                            |                                   |                           |                    |      |           |              | √                     |                          |         | √                    | √                    |
| Economic Development Tech Assistance                               |                   |         |            |                     |                       |                 |          |             | √                  |                 |  |  |                        |                |                               |                            |                                   |                           |                    |      |           |              |                       |                          |         | √                    | √                    |
| Emergency Advance Measures for Flood Protection                    |                   |         |            |                     |                       |                 |          | √           | √                  | √               |  |  |                        |                |                               |                            |                                   |                           |                    |      |           |              |                       |                          |         | √                    | √                    |

# Lyndon Township

| Funding Source  | Civil Disturbance | Drought | Earthquake | Extreme Temperature | Scrap Tire Facilities | Structural Fire | Wildfire | Dam Failure | Flooding: Riverine | Flooding: Urban | Hazardous Materials Incidents - Fixed Site | Hazardous Materials Incidents - Transportation | Infrastructure Failure | Nuclear Attack | Nuclear Power Plant Incidents | Oil/Nat Gas Well Incidents | Petrol/Nat Gas Pipeline Incidents | Public Health Emergencies | Sabotage/Terrorism | Hail | Lightning | Severe Winds | Severe Winter Weather | Transportation Accidents | Tornado | Financial Assistance | Technical Assistance |
|---|-------------------|---------|------------|---------------------|-----------------------|-----------------|----------|-------------|--------------------|-----------------|--|--|------------------------|----------------|-------------------------------|----------------------------|-----------------------------------|---------------------------|--------------------|------|-----------|--------------|-----------------------|--------------------------|---------|----------------------|----------------------|
| <b>FEDERAL SOURCES</b>                                      |                   |         |            |                     |                       |                 |          |             |                    |                 |  |  |                        |                |                               |                            |                                   |                           |                    |      |           |              |                       |                          |         |                      |                      |
| Emergency Community Water Assistance Grants                 |                   | √       |            |                     |                       |                 |          |             | √                  |                 | √  |  | √                      |                |                               |                            |                                   | √                         | √                  |      |           |              |                       |                          |         | √                    |                      |
| Emergency Conservation Program                              |                   | √       |            |                     |                       |                 |          |             | √                  |                 |  |  |                        |                |                               |                            |                                   |                           |                    |      |           | √            |                       |                          | √       |                      |                      |
| Emergency Flood and Shelter National Board Program          | √                 | √       | √          | √                   | √                     | √               | √        | √           | √                  | √               | √  | √  | √                      | √              | √                             | √                          | √                                 | √                         | √                  | √    | √         | √            | √                     | √                        | √       | √                    | √                    |
| Emergency Management Institute-Resident Ed Program          | √                 | √       | √          | √                   | √                     | √               | √        | √           | √                  | √               | √  | √  | √                      | √              | √                             | √                          | √                                 | √                         | √                  | √    | √         | √            | √                     | √                        | √       | √                    | √                    |
| Emergency Management Institute-Training Assistance          | √                 | √       | √          | √                   | √                     | √               | √        | √           | √                  | √               | √  | √  | √                      | √              | √                             | √                          | √                                 | √                         | √                  | √    | √         | √            | √                     | √                        | √       | √                    | √                    |
| Emergency Management Performance Grants                     | √                 | √       | √          | √                   | √                     | √               | √        | √           | √                  | √               | √  | √  | √                      | √              | √                             | √                          | √                                 | √                         | √                  | √    | √         | √            | √                     | √                        | √       | √                    | √                    |
| Emergency Management-State and Local Assistance             | √                 | √       | √          | √                   | √                     | √               | √        | √           | √                  | √               | √  | √  | √                      | √              | √                             | √                          | √                                 | √                         | √                  | √    | √         | √            | √                     | √                        | √       | √                    | √                    |
| Emergency Operations Flood Response and Post-Flood Response |                   |         |            |                     |                       |                 |          | √           | √                  | √               |  |  |                        |                |                               |                            |                                   |                           |                    |      |           |              |                       |                          |         | √                    |                      |
| Emergency Rehabilitation of Flood Control Works             |                   |         |            |                     |                       |                 |          | √           | √                  |                 |  |  |                        |                |                               |                            |                                   |                           |                    |      |           |              |                       |                          |         | √                    |                      |
| Engineering Grants  | √                 | √       | √          | √                   | √                     | √               | √        | √           | √                  | √               | √  | √  | √                      | √              | √                             | √                          | √                                 | √                         | √                  | √    | √         | √            | √                     | √                        | √       | √                    | √                    |
| Farmland Protection Program                                 |                   |         |            |                     |                       |                 |          |             | √                  |                 |  |  |                        |                |                               |                            |                                   |                           |                    |      |           |              |                       |                          |         | √                    |                      |
| Fire Suppression Assistance                                 |                   |         |            |                     |                       |                 | √        |             |                    |                 |  |  |                        |                |                               |                            |                                   |                           |                    |      |           |              |                       |                          |         | √                    |                      |
| Fisheries Disaster Relief                                   |                   | √       |            |                     |                       |                 | √        | √           | √                  | √               | √  | √  |                        |                |                               |                            |                                   |                           | √                  |      |           |              |                       |                          |         | √                    |                      |
| Flood Insurance   |                   |         |            |                     |                       |                 |          | √           | √                  | √               |  |  |                        |                |                               |                            |                                   |                           |                    |      |           |              |                       |                          |         |                      | √                    |
| Flood Mitigation Assistance                                 |                   |         |            |                     |                       |                 |          |             | √                  | √               |  |  |                        |                |                               |                            |                                   |                           |                    |      |           |              |                       |                          |         | √                    |                      |
| Flood Plain Management Services                             |                   |         |            |                     |                       |                 |          | √           | √                  | √               |  |  |                        |                |                               |                            |                                   |                           |                    |      |           |              |                       |                          |         | √                    |                      |
| Food Control Projects                                       |                   |         |            |                     |                       |                 |          | √           | √                  |                 |  |  |                        |                |                               |                            |                                   |                           |                    |      |           |              |                       |                          |         | √                    |                      |
| Forestry Incentives Program                                 |                   |         |            |                     |                       |                 |          |             |                    |                 |  |  |                        |                |                               |                            |                                   |                           |                    |      |           | √            |                       |                          | √       | √                    |                      |
| Forestry Research   |                   |         |            |                     |                       |                 |          |             | √                  | √               |  |  |                        |                |                               |                            |                                   |                           |                    |      |           | √            |                       |                          | √       | √                    |                      |
| Grants for Public Works and Economic Development            |                   |         |            |                     |                       |                 |          | √           | √                  | √               |  |  | √                      |                |                               |                            |                                   |                           |                    |      |           |              |                       |                          |         | √                    |                      |

# Lyndon Township

| Funding Source   | Civil Disturbance | Drought | Earthquake | Extreme Temperature | Scrap Tire Facilities | Structural Fire | Wildfire | Dam Failure | Flooding: Riverine | Flooding: Urban | Hazardous Materials Incidents - Fixed Site | Hazardous Materials Incidents - Transportation | Infrastructure Failure | Nuclear Attack | Nuclear Power Plant Incidents | Oil/Nat Gas Well Incidents | Petrol/Nat Gas Pipeline Incidents | Public Health Emergencies | Sabotage/Terrorism | Hail | Lightning | Severe Winds | Severe Winter Weather | Transportation Accidents | Tornado | Financial Assistance | Technical Assistance |
|--|-------------------|---------|------------|---------------------|-----------------------|-----------------|----------|-------------|--------------------|-----------------|--|--|------------------------|----------------|-------------------------------|----------------------------|-----------------------------------|---------------------------|--------------------|------|-----------|--------------|-----------------------|--------------------------|---------|----------------------|----------------------|
| <b>FEDERAL SOURCES</b>   |                   |         |            |                     |                       |                 |          |             |                    |                 |  |  |                        |                |                               |                            |                                   |                           |                    |      |           |              |                       |                          |         |                      |                      |
| Grants-in-Aid for Railroad Safety-State Participation                        |                   |         |            |                     |                       |                 |          |             |                    |                 |  | √  |                        |                |                               |                            |                                   |                           |                    |      |           |              |                       | √                        |         |                      | √                    |
| Habitat Conservation   |                   |         |            |                     |                       |                 |          |             |                    |                 |  |  |                        |                |                               |                            |                                   |                           |                    |      |           |              |                       |                          |         |                      | √                    |
| Hazard Mitigation Grant Program  | √                 | √       | √          | √                   | √                     | √               | √        | √           | √                  | √               | √  | √  | √                      | √              | √                             | √                          | √                                 | √                         | √                  | √    | √         | √            | √                     | √                        | √       | √                    | √                    |
| HazMat Training Program for Implementation of SARA                           |                   |         |            |                     |                       |                 |          |             |                    |                 | √  | √  |                        |                |                               |                            |                                   |                           |                    |      |           |              |                       |                          |         |                      | √                    |
| Health Program for Toxic Substances and Disease Registry                     |                   |         |            |                     |                       |                 |          |             |                    |                 | √  |  |                        |                |                               |                            |                                   | √                         |                    |      |           |              |                       |                          |         |                      | √                    |
| Highway Planning and Construction  |                   |         |            |                     |                       |                 |          |             |                    |                 |  |  | √                      |                |                               |                            |                                   |                           |                    |      |           |              |                       |                          |         | √                    | √                    |
| Historic Preservation Funds Grants-In Aid                                    |                   |         |            |                     |                       | √               |          |             | √                  | √               |  |  |                        |                |                               |                            |                                   |                           |                    | √    | √         | √            | √                     |                          | √       |                      | √                    |
| HOME Investment Partnerships Program   |                   |         |            |                     |                       |                 |          |             | √                  | √               |  |  |                        |                |                               |                            |                                   |                           |                    | √    | √         | √            |                       |                          |         | √                    |                      |
| Hydrologic Research  |                   | √       |            |                     |                       |                 |          | √           | √                  | √               |  |  |                        |                |                               |                            |                                   |                           |                    |      |           |              |                       |                          |         |                      | √                    |
| Individual and Family Grant Program  | √                 | √       | √          |                     |                       |                 | √        | √           | √                  | √               |  |  |                        |                |                               |                            |                                   |                           |                    |      |           |              |                       |                          |         |                      | √                    |
| Planning Grants (HazMat Emergency Preparedness Grant)                        |                   |         |            |                     |                       |                 |          |             |                    |                 | √  | √  |                        |                |                               |                            |                                   |                           |                    |      |           |              |                       |                          |         |                      | √                    |
| Motor Carrier Safety   |                   |         |            |                     |                       |                 |          |             |                    |                 |  | √  |                        |                |                               |                            |                                   |                           |                    |      |           |              |                       |                          |         |                      | √                    |
| National Dam Safety Program  |                   |         |            |                     |                       |                 | √        |             |                    |                 |  |  |                        |                |                               |                            |                                   |                           |                    |      |           |              |                       |                          |         |                      | √                    |
| National Pollutant Discharge Elimination System Related State Program Grants |                   |         |            |                     |                       |                 |          |             |                    |                 |  |  |                        |                |                               | √                          | √                                 | √                         |                    |      |           |              |                       |                          |         |                      | √                    |
| National Urban Search and Rescue Response System                             |                   |         | √          |                     |                       |                 |          |             |                    |                 |  |  | √                      |                |                               |                            |                                   |                           | √                  |      |           |              |                       | √                        |         |                      | √                    |
| North American Wetlands Conservation Fund                                    |                   |         |            |                     |                       |                 |          | √           | √                  |                 |  |  |                        |                |                               |                            |                                   |                           |                    |      |           |              |                       |                          |         |                      | √                    |
| Nursing Homes  |                   |         |            |                     |                       | √               |          |             |                    |                 |  |  |                        |                |                               |                            |                                   |                           |                    |      |           |              |                       |                          |         |                      | √                    |
| Planning (Land and Water Conservation Fund Grants)                           |                   |         |            |                     |                       |                 |          |             | √                  |                 |  |  |                        |                |                               |                            |                                   |                           |                    |      |           |              |                       |                          |         |                      | √                    |
| Physical Disaster Loans  | √                 |         | √          |                     | √                     | √               |          |             | √                  | √               |  |  | √                      |                |                               |                            |                                   |                           | √                  | √    | √         | √            | √                     |                          | √       | √                    | √                    |
| Pipeline Safety  |                   |         |            |                     |                       |                 |          |             |                    |                 |  |  |                        |                |                               | √                          | √                                 |                           |                    |      |           |              |                       |                          |         |                      | √                    |

# Lyndon Township

| Funding Source  | Civil Disturbance | Drought | Earthquake | Extreme Temperature | Scrap Tire Facilities | Structural Fire | Wildfire | Dam Failure | Flooding: Riverine | Flooding: Urban | Hazardous Materials Incidents - Fixed Site | Hazardous Materials Incidents - Transportation | Infrastructure Failure | Nuclear Attack | Nuclear Power Plant Incidents | Oil/Nat Gas Well Incidents | Petrol/Nat Gas Pipeline Incidents | Public Health Emergencies | Sabotage/Terrorism | Hail | Lightning | Severe Winds | Severe Winter Weather | Transportation Accidents | Tornado | Financial Assistance | Technical Assistance |
|---|-------------------|---------|------------|---------------------|-----------------------|-----------------|----------|-------------|--------------------|-----------------|--|--|------------------------|----------------|-------------------------------|----------------------------|-----------------------------------|---------------------------|--------------------|------|-----------|--------------|-----------------------|--------------------------|---------|----------------------|----------------------|
| <b>FEDERAL SOURCES</b>  |                   |         |            |                     |                       |                 |          |             |                    |                 |  |  |                        |                |                               |                            |                                   |                           |                    |      |           |              |                       |                          |         |                      |                      |
| Project Impact: Building Disaster-Resistant Communities                       | √                 | √       | √          | √                   | √                     | √               | √        | √           | √                  | √               | √  | √  | √                      | √              | √                             | √                          | √                                 | √                         | √                  | √    | √         | √            | √                     | √                        | √       | √                    | √                    |
| Protection Clearing and Straightening Channels                                |                   |         |            |                     |                       |                 |          |             | √                  |                 |  |  |                        |                |                               |                            |                                   |                           |                    |      |           |              |                       |                          |         |                      | √                    |
| Protection of Essential Highways, Highway Bridge Approaches, and Public Works |                   |         |            |                     |                       |                 |          | √           | √                  |                 |  |  |                        |                |                               |                            |                                   |                           |                    |      |           |              |                       |                          |         |                      | √                    |
| Public Assistance Grant Program   | √                 | √       | √          | √                   | √                     | √               | √        | √           | √                  | √               | √  | √  | √                      | √              | √                             | √                          | √                                 | √                         | √                  | √    | √         | √            | √                     | √                        | √       | √                    | √                    |
| Public Health and Social Services Emergency Fund (Post-Declaration Only)      |                   |         |            |                     |                       |                 |          |             |                    |                 |  |  |                        |                |                               |                            |                                   | √                         |                    |      |           |              |                       |                          |         |                      | √                    |
| Public Telecommunications Facilities Planning and Construction                |                   |         |            |                     |                       |                 |          |             |                    |                 |  |  |                        |                |                               |                            |                                   |                           |                    |      |           |              |                       |                          | √       | √                    |                      |
| Railroad Safety   |                   |         |            |                     |                       |                 |          |             |                    |                 |  | √  |                        |                |                               |                            |                                   |                           |                    |      |           |              |                       | √                        |         |                      | √                    |
| Resource Conservation and Development   |                   | √       | √          | √                   |                       |                 | √        |             | √                  | √               |  |  |                        |                |                               |                            |                                   |                           |                    |      |           |              |                       |                          |         |                      | √                    |
| Rivers, Trails, and Conservation Assistance                                   |                   |         |            |                     |                       |                 |          |             | √                  |                 |  |  |                        |                |                               |                            |                                   |                           |                    |      |           |              |                       |                          |         |                      | √                    |
| Rural Business Opportunity Grants   |                   |         |            |                     |                       |                 |          |             | √                  |                 |  |  |                        |                |                               |                            |                                   |                           |                    |      |           |              |                       |                          |         |                      | √                    |
| Rural Development Grants  |                   |         |            |                     |                       |                 |          |             | √                  |                 |  |  | √                      |                |                               |                            |                                   |                           |                    |      |           |              |                       |                          |         |                      | √                    |
| Rural Electrification Loans   |                   |         |            |                     |                       |                 |          |             |                    |                 |  |  | √                      |                |                               |                            |                                   |                           |                    |      |           | √            | √                     | √                        | √       | √                    | √                    |
| Rural Housing and Economic Development  | √                 | √       | √          | √                   | √                     | √               | √        | √           | √                  | √               | √  | √  |                        |                |                               |                            |                                   | √                         | √                  | √    | √         | √            | √                     | √                        | √       | √                    | √                    |
| Rural Housing Site Loans and Self-Help Housing and Development Loans          |                   |         |            |                     |                       |                 |          |             | √                  |                 |  |  |                        |                |                               |                            |                                   |                           |                    |      |           |              |                       |                          |         |                      | √                    |
| Snagging and Clearing for Flood Control                                       |                   |         |            |                     |                       |                 |          | √           | √                  |                 |  |  |                        |                |                               |                            |                                   |                           |                    |      |           |              |                       |                          |         |                      | √                    |
| Soil and Water Conservation   |                   | √       | √          | √                   |                       |                 | √        |             | √                  | √               |  |  |                        |                |                               |                            |                                   |                           |                    |      |           |              |                       |                          |         |                      | √                    |
| State and Community Highway Safety  |                   |         |            |                     |                       |                 |          |             |                    |                 |  | √  |                        |                |                               |                            |                                   |                           |                    |      |           |              |                       | √                        |         |                      | √                    |
| State Domestic Preparedness Equipment, Support Program                        |                   |         |            |                     |                       |                 |          |             |                    |                 |  |  |                        |                |                               |                            |                                   |                           | √                  |      |           |              |                       |                          |         |                      | √                    |
| Superfund State Site-Specific Cooperative Agreements                          |                   |         |            |                     |                       |                 |          |             |                    |                 | √  |  |                        |                |                               |                            |                                   | √                         |                    |      |           |              |                       |                          |         |                      | √                    |
| Superfund Technical Assistance Grants for Citizen Groups at Priority Sites    |                   |         |            |                     |                       |                 |          |             |                    |                 | √  |  |                        |                |                               |                            |                                   |                           |                    |      |           |              |                       |                          |         |                      | √                    |
| Surveys, Studies, Investigations and Special Purpose Grants                   |                   |         |            |                     |                       |                 |          |             |                    |                 | √  | √  |                        |                | √                             | √                          | √                                 | √                         |                    |      |           |              |                       |                          |         |                      | √                    |

# Lyndon Township

| Funding Source  | Civil Disturbance | Drought | Earthquake | Extreme Temperature | Scrap Tire Facilities | Structural Fire | Wildfire | Dam Failure | Flooding: Riverine | Flooding: Urban | Hazardous Materials Incidents - Fixed Site | Hazardous Materials Incidents - Transportation | Infrastructure Failure | Nuclear Attack | Nuclear Power Plant Incidents | Oil/Nat Gas Well Incidents | Petrol/Nat Gas Pipeline Incidents | Public Health Emergencies | Sabotage/Terrorism | Hail | Lightning | Severe Winds | Severe Winter Weather | Transportation Accidents | Tornado | Financial Assistance | Technical Assistance |
|---|-------------------|---------|------------|---------------------|-----------------------|-----------------|----------|-------------|--------------------|-----------------|--|--|------------------------|----------------|-------------------------------|----------------------------|-----------------------------------|---------------------------|--------------------|------|-----------|--------------|-----------------------|--------------------------|---------|----------------------|----------------------|
| <b>FEDERAL SOURCES</b>                                |                   |         |            |                     |                       |                 |          |             |                    |                 |  |  |                        |                |                               |                            |                                   |                           |                    |      |           |              |                       |                          |         |                      |                      |
| Technology Development for Environmental Management   |                   |         |            |                     |                       |                 |          |             |                    |                 |  | √  |                        |                | √                             |                            |                                   |                           |                    |      |           |              |                       |                          |         |                      | √                    |
| Very Low Income Housing Repair Loans/Grants           |                   |         |            | √                   |                       | √               | √        |             | √                  |                 |  |  |                        |                |                               |                            |                                   |                           |                    | √    | √         | √            |                       |                          | √       |                      | √                    |
| Very Low to Moderate Income Housing Loans             |                   |         |            | √                   |                       | √               | √        |             | √                  |                 |  |  |                        |                |                               |                            |                                   |                           |                    | √    | √         | √            |                       |                          | √       |                      | √                    |
| Water and Waste Disposal System for Rural Communities |                   |         |            |                     |                       |                 |          |             | √                  |                 | √  |  | √                      |                |                               |                            |                                   | √                         | √                  |      |           |              |                       |                          |         |                      | √                    |
| Water/Waste Disposal Loans/Grants                     |                   |         |            |                     |                       |                 |          |             | √                  |                 | √  |  | √                      |                |                               |                            |                                   | √                         |                    |      |           |              |                       |                          |         |                      | √                    |
| Watershed Protection and Flood Prevention             |                   |         |            |                     |                       |                 |          | √           | √                  | √               |  |  |                        |                |                               |                            |                                   | √                         |                    |      |           |              |                       |                          |         |                      | √                    |
| Watershed Surveys and Planning                        |                   | √       |            |                     |                       |                 |          |             | √                  |                 |  |  |                        |                |                               |                            |                                   |                           |                    |      |           |              |                       |                          |         |                      | √                    |
| Weatherization Assistance for Low-Income Persons      |                   |         |            | √                   |                       |                 |          |             |                    |                 |  |  |                        |                |                               |                            |                                   |                           |                    |      |           |              |                       |                          |         |                      | √                    |
| Wetlands Protection-Development Grants                |                   |         |            |                     |                       |                 |          |             | √                  | √               |  |  |                        |                |                               |                            |                                   |                           |                    |      |           |              |                       |                          |         |                      | √                    |
| Wetlands Reserve Program                              |                   |         |            |                     |                       |                 |          |             | √                  | √               |  |  |                        |                |                               |                            |                                   |                           |                    |      |           |              |                       |                          |         |                      | √                    |
| Wildlife Habitat Incentive Program                    |                   |         |            |                     |                       |                 |          |             | √                  |                 |  |  |                        |                |                               |                            |                                   |                           |                    |      |           |              |                       |                          |         |                      | √                    |

# Lyndon Township

| Funding Source   | Civil Disturbance | Drought | Earthquake | Extreme Temperature | Scrap Tire Facilities | Structural Fire | Wildfire | Dam Failure | Flooding: Riverine | Flooding: Urban | Hazardous Materials Incidents - Fixed Site | Hazardous Materials Incidents - Transportation | Infrastructure Failure | Nuclear Attack | Nuclear Power Plant Incidents | Oil/Nat Gas Well Incidents | Petrol/Nat Gas Pipeline Incidents | Public Health Emergencies | Sabotage/Terrorism | Hail | Lightning | Severe Winds | Severe Winter Weather | Transportation Accidents | Tornado | Financial Assistance | Technical Assistance |
|--|-------------------|---------|------------|---------------------|-----------------------|-----------------|----------|-------------|--------------------|-----------------|--|--|------------------------|----------------|-------------------------------|----------------------------|-----------------------------------|---------------------------|--------------------|------|-----------|--------------|-----------------------|--------------------------|---------|----------------------|----------------------|
| <b>STATE OF MICHIGAN</b>   |                   |         |            |                     |                       |                 |          |             |                    |                 |  |  |                        |                |                               |                            |                                   |                           |                    |      |           |              |                       |                          |         |                      |                      |
| <b>Department of Agriculture</b>                                 |                   |         |            |                     |                       |                 |          |             |                    |                 |  |  |                        |                |                               |                            |                                   |                           |                    |      |           |              |                       |                          |         |                      |                      |
| Energy Conservation Program                                      |                   |         |            |                     |                       |                 |          |             | √                  |                 |  |  |                        |                |                               |                            |                                   |                           |                    |      |           |              | √                     |                          |         | √                    | √                    |
| Groundwater Stewardship Program                                  |                   |         |            |                     |                       |                 |          |             |                    |                 | √  |  |                        |                |                               |                            |                                   | √                         |                    |      |           |              |                       |                          |         | √                    | √                    |
| Intercounty Drain Program (available to Drain Commissioner only) |                   |         |            |                     |                       |                 |          | √           | √                  | √               |  |  |                        |                |                               |                            |                                   |                           |                    |      |           |              |                       |                          |         |                      | √                    |
| <b>Economic Development Corporation</b>                          |                   |         |            |                     |                       |                 |          |             |                    |                 |  |  |                        |                |                               |                            |                                   |                           |                    |      |           |              |                       |                          |         |                      |                      |
| Community Development Block Grant                                |                   |         |            |                     |                       |                 |          |             | √                  | √               |  |  | √                      |                |                               |                            |                                   |                           |                    |      |           |              |                       |                          |         | √                    |                      |
| Urban Land Assembly  |                   |         |            |                     |                       |                 |          |             | √                  |                 |  |  |                        |                |                               |                            |                                   |                           |                    |      |           |              |                       |                          |         | √                    |                      |
| <b>Environmental Quality</b>                                     |                   |         |            |                     |                       |                 |          |             |                    |                 |  |  |                        |                |                               |                            |                                   |                           |                    |      |           |              |                       |                          |         |                      |                      |
| Abandoned Well Mgmt. Program                                     |                   |         |            |                     |                       |                 |          |             |                    |                 |  |  |                        |                |                               |                            |                                   | √                         |                    |      |           |              |                       |                          |         | √                    |                      |
| Alternate Water Supply Replacement Program                       |                   |         |            |                     |                       |                 |          |             | √                  | √               | √  |  | √                      |                |                               |                            |                                   | √                         |                    |      |           |              |                       |                          |         | √                    |                      |
| Brownfield Redevelopment Grants                                  |                   |         |            |                     |                       |                 |          |             |                    |                 | √  |  |                        |                |                               |                            |                                   | √                         |                    |      |           |              |                       |                          |         | √                    | √                    |
| Drinking Water Revolving Loan Fund                               |                   |         |            |                     |                       |                 |          |             |                    |                 |  |  | √                      |                |                               |                            |                                   | √                         | √                  |      |           |              |                       |                          |         | √                    |                      |
| Municipal Landfill Cost-Share Grant Program                      |                   |         |            |                     |                       |                 |          |             |                    |                 |  |  |                        |                |                               |                            |                                   | √                         |                    |      |           |              |                       |                          |         | √                    |                      |
| Non-community Water Supply Program Grant                         |                   |         |            |                     |                       |                 |          |             |                    |                 |  |  |                        |                |                               |                            |                                   | √                         |                    |      |           |              |                       |                          |         | √                    |                      |
| Scrap Tire Collection Site Cleanup Grants                        |                   |         |            |                     | √                     |                 |          |             |                    |                 |  |  |                        |                |                               |                            |                                   |                           |                    |      |           |              |                       |                          |         | √                    |                      |
| State Revolving Loan Fund  |                   |         |            |                     |                       |                 |          |             | √                  | √               |  |  | √                      |                |                               |                            |                                   | √                         |                    |      |           |              |                       |                          |         | √                    |                      |
| Wellhead Protection Program                                      |                   |         |            |                     |                       |                 |          |             | √                  | √               |  |  |                        |                |                               |                            |                                   | √                         |                    |      |           |              |                       |                          |         | √                    |                      |
| Wetland Program Development                                      |                   |         |            |                     |                       |                 |          |             | √                  | √               |  |  |                        |                |                               |                            |                                   |                           |                    |      |           |              |                       |                          |         | √                    |                      |

# Lyndon Township

| Funding Source   | Civil Disturbance | Drought | Earthquake | Extreme Temperature | Scrap Tire Facilities | Structural Fire | Wildfire | Dam Failure | Flooding: Riverine | Flooding: Urban | Hazardous Materials Incidents - Fixed Site | Hazardous Materials Incidents - Transportation | Infrastructure Failure | Nuclear Attack | Nuclear Power Plant Incidents | Oil/Nat Gas Well Incidents | Petrol/Nat Gas Pipeline Incidents | Public Health Emergencies | Sabotage/Terrorism | Hail | Lightning | Severe Winds | Severe Winter Weather | Transportation Accidents | Tornado | Financial Assistance | Technical Assistance |   |
|--|-------------------|---------|------------|---------------------|-----------------------|-----------------|----------|-------------|--------------------|-----------------|--|--|------------------------|----------------|-------------------------------|----------------------------|-----------------------------------|---------------------------|--------------------|------|-----------|--------------|-----------------------|--------------------------|---------|----------------------|----------------------|---|
| <b>STATE OF MICHIGAN</b>                                 |                   |         |            |                     |                       |                 |          |             |                    |                 |  |  |                        |                |                               |                            |                                   |                           |                    |      |           |              |                       |                          |         |                      |                      |   |
| <b>Housing Development Authority</b>                     |                   |         |            |                     |                       |                 |          |             |                    |                 |  |  |                        |                |                               |                            |                                   |                           |                    |      |           |              |                       |                          |         |                      |                      |   |
| Community Development Block Grants/Housing Resource Fund |                   |         |            |                     |                       | √               |          |             | √                  | √               |  |  |                        |                |                               |                            |                                   |                           |                    |      | √         |              | √                     |                          | √       | √                    |                      |   |
| Home/Property Improvement Loans                          |                   |         |            |                     |                       | √               |          |             | √                  | √               |  |  |                        |                |                               |                            |                                   |                           |                    |      | √         |              | √                     |                          | √       | √                    |                      |   |
| <b>Department of Natural Resources</b>                   |                   |         |            |                     |                       |                 |          |             |                    |                 |  |  |                        |                |                               |                            |                                   |                           |                    |      |           |              |                       |                          |         |                      |                      |   |
| Habitat Improvement Fund Project Grants                  |                   |         |            |                     |                       |                 |          |             | √                  |                 |  |  |                        |                |                               |                            |                                   |                           |                    |      |           |              |                       |                          |         |                      | √                    |   |
| Land and Water Conservation Fund                         |                   |         |            |                     |                       |                 |          |             | √                  |                 |  |  |                        |                |                               |                            |                                   |                           |                    |      |           |              |                       |                          |         |                      | √                    |   |
| Natural Resources Trust Fund                             |                   |         |            |                     |                       | √               |          |             | √                  |                 |  |  |                        |                |                               |                            |                                   |                           |                    |      |           |              |                       |                          |         |                      | √                    |   |
| Recreational Trails Program Grants                       |                   |         |            |                     |                       |                 |          |             | √                  |                 |  |  |                        |                |                               |                            |                                   |                           |                    |      |           |              |                       |                          |         |                      | √                    |   |
| Urban and Community Forestry Program                     |                   |         |            |                     |                       |                 |          |             |                    |                 |  |  |                        |                |                               |                            |                                   |                           |                    |      |           |              | √                     | √                        |         | √                    | √                    |   |
| Volunteer Fire Assistance                                |                   |         |            |                     | √                     | √               | √        |             |                    |                 |  |  |                        |                |                               |                            |                                   |                           |                    |      |           |              |                       |                          |         |                      | √                    |   |
| <b>State Police</b>                                      |                   |         |            |                     |                       |                 |          |             |                    |                 |  |  |                        |                |                               |                            |                                   |                           |                    |      |           |              |                       |                          |         |                      |                      |   |
| Emergency Management Performance Grants                  | √                 | √       | √          | √                   | √                     | √               | √        | √           | √                  | √               | √  | √  | √                      | √              | √                             | √                          | √                                 | √                         | √                  | √    | √         | √            | √                     | √                        | √       | √                    | √                    | √ |
| Flood Mitigation Assistance                              |                   |         |            |                     |                       |                 |          |             | √                  | √               |  |  |                        |                |                               |                            |                                   |                           |                    |      |           |              |                       |                          |         |                      | √                    | √ |
| Hazard Mitigation Grant Program                          | √                 | √       | √          | √                   | √                     | √               | √        | √           | √                  | √               | √  | √  | √                      | √              | √                             | √                          | √                                 | √                         | √                  | √    | √         | √            | √                     | √                        | √       | √                    | √                    |   |
| Individual and Family Grant Program                      |                   |         |            |                     |                       |                 |          |             | √                  | √               |  |  | √                      |                |                               |                            |                                   |                           |                    |      |           |              |                       |                          |         |                      | √                    |   |

# Lyndon Township

| Funding Source  | Civil Disturbance | Drought | Earthquake | Extreme Temperature | Scrap Tire Facilities | Structural Fire | Wildfire | Dam Failure | Flooding: Riverine | Flooding: Urban | Hazardous Materials Incidents - Fixed Site | Hazardous Materials Incidents - Transportation | Infrastructure Failure | Nuclear Attack | Nuclear Power Plant Incidents | Oil/Nat Gas Well Incidents | Petro/Nat Gas Pipeline Incidents | Public Health Emergencies | Sabotage/Terrorism | Hail | Lightning | Severe Winds | Severe Winter Weather | Transportation Accidents | Tornado | Financial Assistance | Technical Assistance |
|---|-------------------|---------|------------|---------------------|-----------------------|-----------------|----------|-------------|--------------------|-----------------|--|--|------------------------|----------------|-------------------------------|----------------------------|----------------------------------|---------------------------|--------------------|------|-----------|--------------|-----------------------|--------------------------|---------|----------------------|----------------------|
| <b>STATE OF MICHIGAN</b>  |                   |         |            |                     |                       |                 |          |             |                    |                 |  |  |                        |                |                               |                            |                                  |                           |                    |      |           |              |                       |                          |         |                      |                      |
| <b>State Police (continued)</b>   |                   |         |            |                     |                       |                 |          |             |                    |                 |  |  |                        |                |                               |                            |                                  |                           |                    |      |           |              |                       |                          |         |                      |                      |
| Interagency HazMat Public Sector Training and Planning Grants (HazMat Emergency Preparedness Grant) |                   |         |            |                     |                       |                 |          |             |                    |                 | √  | √  |                        | √              | √                             | √                          | √                                |                           |                    |      |           |              |                       |                          |         | √                    |                      |
| Project Impact  | √                 | √       | √          | √                   | √                     | √               | √        | √           | √                  | √               | √  | √  | √                      | √              | √                             | √                          | √                                | √                         | √                  | √    | √         | √            | √                     | √                        | √       | √                    | √                    |
| Public Assistance Grant Program   | √                 | √       | √          | √                   | √                     | √               | √        | √           | √                  | √               | √  | √  | √                      | √              | √                             | √                          | √                                | √                         | √                  | √    | √         | √            | √                     | √                        | √       | √                    | √                    |
| <b>Department of Transportation</b>   |                   |         |            |                     |                       |                 |          |             |                    |                 |  |  |                        |                |                               |                            |                                  |                           |                    |      |           |              |                       |                          |         |                      |                      |
| Rail Loan Assistance Program  |                   |         |            |                     |                       |                 |          |             |                    |                 |  | √  | √                      |                |                               |                            |                                  |                           |                    |      |           |              |                       |                          |         | √                    |                      |
| Trans. Econ. Development Fund   |                   |         |            |                     |                       |                 |          | √           | √                  | √               |  |  |                        |                |                               |                            |                                  |                           |                    |      |           |              |                       |                          |         | √                    |                      |
| <b>Department of Treasury</b>   |                   |         |            |                     |                       |                 |          |             |                    |                 |  |  |                        |                |                               |                            |                                  |                           |                    |      |           |              |                       |                          |         |                      |                      |
| Municipal Bond Authority-Local Government Loan Program  |                   |         |            | √                   |                       | √               |          |             | √                  | √               |  |  | √                      |                |                               |                            |                                  |                           | √                  | √    | √         | √            | √                     | √                        |         | √                    |                      |
| Municipal Bond Authority-State Aid Note Program   |                   |         |            | √                   |                       | √               |          |             | √                  | √               |  |  | √                      |                |                               |                            |                                  |                           | √                  | √    | √         | √            | √                     | √                        |         | √                    |                      |