

HAZARD MITIGATION PLAN for the Village of Dexter

September 2004



Village of Dexter

HAZARD MITIGATION PLAN ADOPTION AND RESOLUTION
FOR LOCAL UNITS OF GOVERNMENT
Resolution No. - 2004

Whereas the Village of Dexter, Michigan has experienced disasters that have resulted in loss of life or injury, damaged commercial, residential and public properties, displaced citizens and businesses, closed streets and bridges, and presented general public health and safety concerns; and

Whereas as of November of 2004 the Federal Emergency Management Agency (FEMA) requires that communities have an adopted Hazard Mitigation Plan as a requirement to receiving funding under certain FEMA programs,

Whereas the *Hazard Mitigation Plan* ranks hazards for the community, and identifies goals, objectives and strategies to reduce overall damage and impact from natural and technological hazards; and

Whereas the Village of Dexter has worked with Washtenaw County to prepare a *Hazard Mitigation Plan*, by participating in the planning process and providing comments with respect to hazards, vulnerable areas and strategies,

Whereas residents, community officials, business owners, educational institutions neighboring jurisdictions and the Michigan State Police Division of Emergency Management have had the opportunity to review the plan and their comments have been incorporated;

Now, therefore, be it resolved that:

1. The Hazard Mitigation Plan is hereby adopted as an official plan of the Village of Dexter.
2. The Hazard Mitigation Plan will be an annual agenda item for the Village of Dexter Village Council to review. The annual review shall include the following:
 - a. A review of the original plan.
 - b. A review of any disasters or emergencies that occurred during the previous calendar year.
 - c. A review of actions taken, including what was accomplished during the previous year
 - d. A discussion of any implementation problems
 - e. Recommendations for new projects or revised action items. Such recommendations shall be subject to approval by this Village Council.
3. The Hazard Mitigation Plan will be updated every five years as required by FEMA, with the assistance of Washtenaw County.
4. The Village Manager will be responsible for ensuring that the strategies in the Plan are implemented, with the understanding that implementation is based on the availability of funding and staff resources.

MOVED BY:Walters

SUPPORTED BY:Fisher

YEAS: Walters, Fisher, Semifero, Carson, Cousins, Keough, and Seta


NAYS: None

ABSENT: None

RESOLUTION DECLARED ADOPTED THIS 13th day of SEPTEMBER 2004.


Jim Seta, Village President

CERTIFIED BY:


David Boyle, Village Clerk

Village of Dexter

Table of Contents

	Page
1.0 INTRODUCTION_____	1
1.1 Purpose_____	1
1.2 Plan Organization_____	1
1.3 Public Participation_____	1
2.0. COMMUNITY PROFILE_____	3
2.1 Historic Overview_____	3
2.2 Natural Features_____	3
2.3 Land Use Patterns_____	3
2.4 Transportation_____	3
3.0 HAZARDS_____	4
3.1 Hazard Ranking_____	4
3.2 Hazard Assessment_____	4
4.0 HAZARD GOALS, OBJECTIVES AND STRATEGIES_____	7
4.1 Non-Hazard Specific Goals, Objectives and Strategies_____	7
4.2 Hazard Specific Goals, Objectives and Strategies_____	7
5.0 IMPLEMENTATION, AND MONITORING_____	12
5.1 Implementation_____	12
5.2 Sources of Financial Assistance_____	13
5.3 Monitoring_____	13

Tables

Table 1: Hazard Ranking Table_____	4
Table 2: Vulnerability Assessment Summary_____	5

Figures

Figure 1: Natural Features_____	2
Figure 2: Assets_____	6
Figure 3: Tornado Warning Siren Coverage and Past Events_____	8

Attachments

- Attachment 1: County Hazard Plan
- Attachment 2: Federal and State Funding Sources

Village of Dexter

Village of Dexter

1.0 INTRODUCTION

Hazard Mitigation is defined as any action taken before, during or after a disaster to permanently eliminate or reduce risks to human life and property from natural, technical or societal hazards. Dexter Village has experienced hazards at varying degrees, and can expect to encounter hazards in the future. The value of a Multi-Hazard Mitigation Plan (Plan) lies in reducing future emergencies to events; by implementing mitigation strategies set forth in this Plan, the expectation is for hazard occurrences to result in fewer deaths and injuries to people, and lessened damage or destruction to structures and the environment. Response and recovery costs should also be reduced.

The Federal Emergency Management Agency (FEMA) provides assistance to local units of government when faced with disasters through the Robert T. Stafford Disaster Relief and Emergency Assistance Act the Stafford Act. Recognizing that planning for hazards is an important component of hazard preparedness, response and recovery programs, the Stafford Act was amended in 2000 to require governments to have an adopted Hazard Mitigation Plan as condition of receiving financial assistance through the FEMA Hazard Mitigation Grant Program by November of 2004.

1.1 Purpose

There are three purposes of this Plan: 1) to identify and rank hazards in Dexter Village; 2) to analyze areas particularly vulnerable to hazards; and 3) to identify feasible mitigation strategies that can be acted upon after adoption of the Plan. The mitigation goals and strategies should also be incorporated into the Dexter Village Master Plan, and other plans, as applicable.

1.2 Plan Organization

This Plan was prepared by Washtenaw County on behalf of Dexter Village. Individual plans were prepared for each local unit of government in recognition of their unique circumstances and potential differences in priorities, goals and mitigation strategies. General information, such as community profile data and hazard descriptions, is contained in the County plan (Attachment 1).

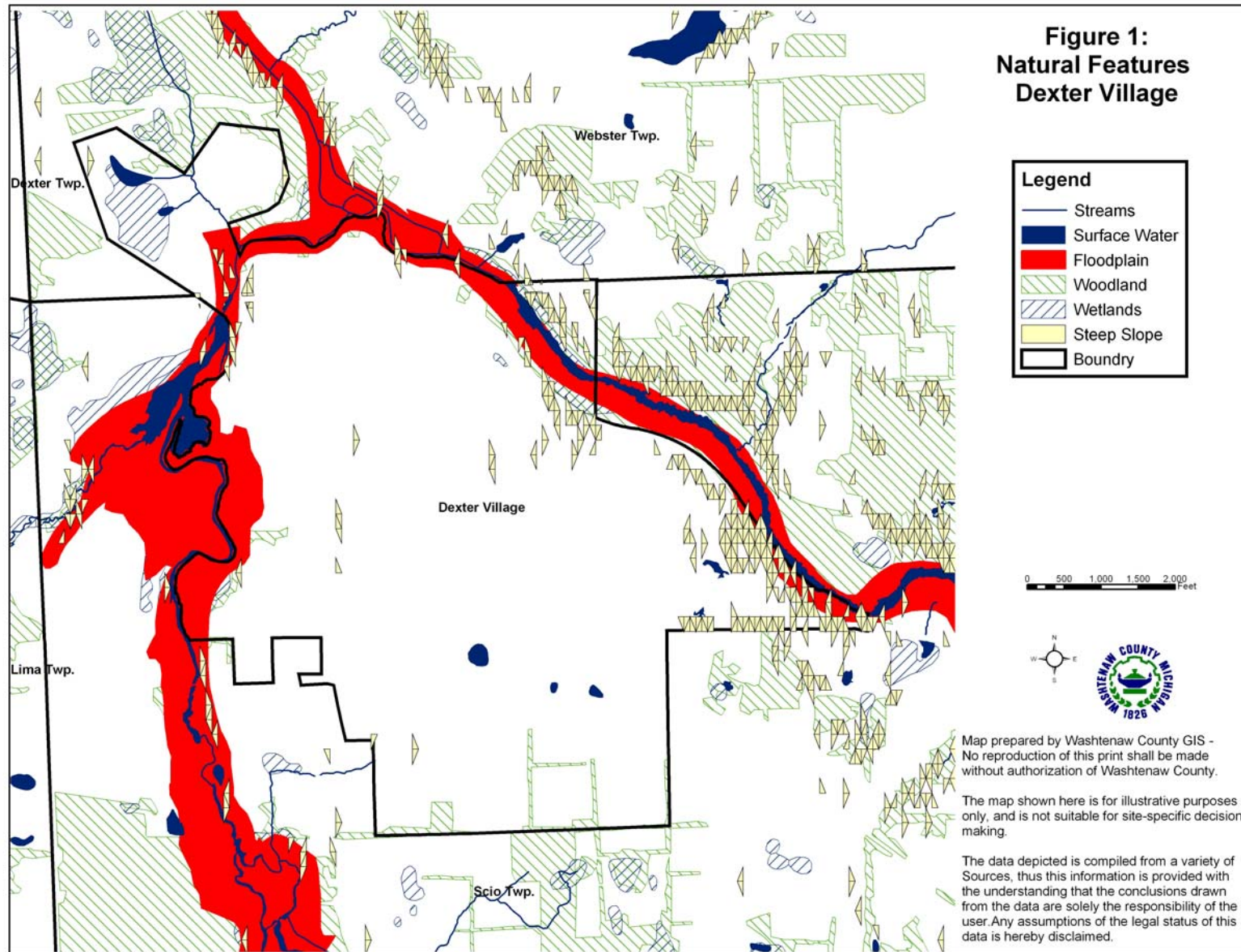
1.3 Public Participation

Representatives from the Village of Barton Hills worked with the Washtenaw County Emergency Management Division and Department of Planning and Environment to draft the hazard mitigation plan. An opportunity for the citizens of Village to comment on the draft plan was provided in June of 2004, when five regional planning workshops were held at various locations around the county in conjunction with the Comprehensive Plan for Washtenaw County. Another workshop was held on June 9, 2004 for commission, board and council members from every community. The draft plan was introduced and copies were available for review at every workshop. Regional workshops were advertised in the local newspapers.

The Village Council also provided an opportunity for public comment prior to adopting the plan on September 13, 2004.

Continued public participation is encouraged through Washtenaw County through website postings, emails, and general contact with local governments. Any comments received by the County on the plan concerning the Dexter area will be shared with the Village.

Village of Dexter



Village of Dexter

2.0 Community Profile

2.1 Historic Overview

Dexter Village is one of the oldest communities in the State, and was established in the mid 1800s. For many years it was an extreme frontier village, and was touted as the keeper of records for all new roads to the west. The Village derived its name from Samuel W. Dexter, who moved to the area from Athens New York in 1824. Judge Dexter was the first business owner, constructing a sawmill and gristmill on Mill Creek and also the first Chief Justice of the area's first court. As a stop along the railroad, the Village became a vibrant community. Today, the Village continues to value and preserve its rich historical character.

2.2 Natural Features

The Huron River, Mill Creek and Mill Pond are the major water features of the Village of Dexter. Floodplains are located along the Huron River and Mill Creek as well as along the east and west Village borders. Nearly the entire village lies within a groundwater recharge area.

Woodland and wetlands are located along the watercourses. The topography of the community is gently rolling. The soils in the area have slight to moderate septic limitations. Over all there are no steep slopes. Some erodible soils are located in the southeast area.

2.3 Land Use Patterns

The Village consists of approximately 1,100 acres. The largest land use is single family residential, at approximately 45%. Industrial uses comprise 17% of lands. Industrial uses and research and development parks are located on the perimeter of the Village, with a concentration on the south side.

2.4 Transportation Network

The transportation network consists of major arterials and local roads and streets. Dan Hoey, Baker and Dexter-Ann Arbor provide access from the south; Mast, Dexter-Ann Arbor provides access from the north. There is a railroad that runs along the northern boundary of the Village. There are no airports located in the Village. Public Transportation is available to the City of Chelsea and the City of Ann Arbor.



Village of Dexter

3.0 HAZARDS

Dexter Village is susceptible to a variety of natural, technological, and societal hazards. The purpose of this section is to:

- Rank the hazards for Dexter Village
- Analyze the risks for each hazard, and
- Identify vulnerable areas for the Village, and appropriate goals and mitigation strategies for certain hazards.

3.1 Hazard Ranking

The ranking of hazards for the Village of Dexter is presented as Table 1. The ranking of hazards was determined on a county-wide basis, and adjusted based on input from Local Units of Government. The ranking order was developed by the Washtenaw County Emergency Management Division using a program provided by the Michigan State Police Emergency Management Division. The model takes into account worst-case scenario data for frequency of occurrence, likelihood of occurrence, significance of impact/threat, potential size of geographic area impacted and total population impacted.

3.2 Hazard Assessment

The purpose of the hazard assessment is to map out where hazards exist and gain information about their frequency of occurrence, and potential for harm using worst-case scenario estimates. Different levels of risk analysis are performed, depending on the significance of the hazard for the community:

- Cursory: A short statement explaining why the hazard is not a threat, prepared for hazards that have little impact or are unlikely to occur.

Table 1: Hazard Ranking

Hazard	Ranking
Convective Weather (Severe Winds, Tornadoes, Lightning, Hail)	1
Fire Hazards: Structural Fires	2
Severe Winter Weather Hazards (Snow Storms and Ice/Sleet Storms)	3
Hazardous Materials Incidents: Fixed Site	4
Public Health Emergencies	5
Civil Disturbances	6
Hazardous Materials Incidents: Transportation	7
Sabotage & Terrorism	9
Infrastructure Failures	10
Transportation Accidents: Air, Land and Water	11
Flood Hazards: Riverine/Urban Flooding	12
Flood Hazards: Dam Failures	13
Extreme Temperatures	14
Drought	15
Fire Hazards: Wildfires	16
Petroleum and Natural Gas Pipeline Accidents	17
Earthquakes	18
Oil and Gas Well Accidents	19
Nuclear Attack	20

Village of Dexter

- Standard: An explanation of concerns with limited quantitative research, prepared for hazards likely to occur and impact our communities.
- Advanced (Vulnerability): A vulnerability determination using probabilities, prepared for hazards that have the highest frequency of occurrence and/or the most potential to cause death, injury or damage to personal property.

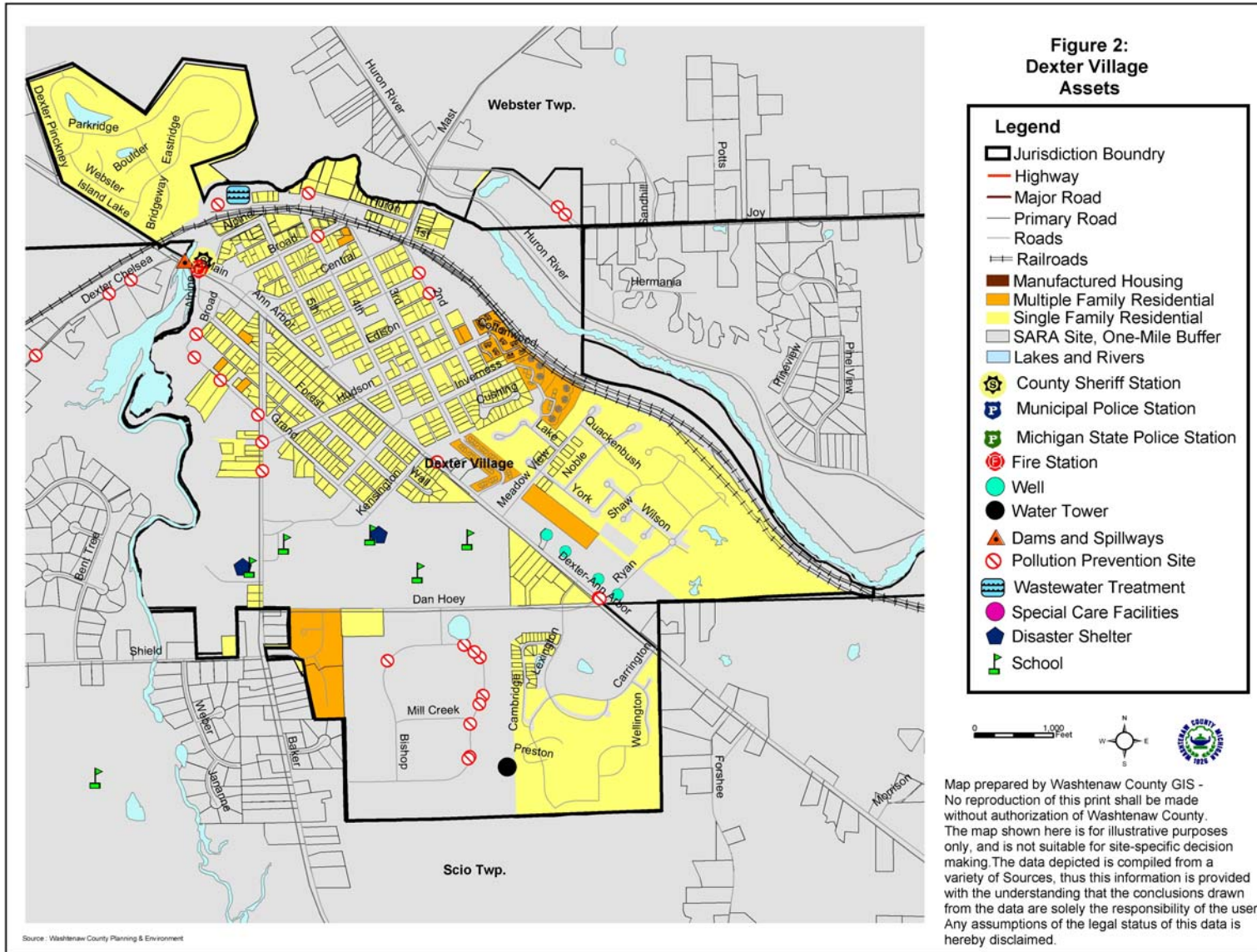
Vulnerability assessments were prepared for convective weather, hazardous materials transportation incidents, hazardous materials fixed site incidents, infrastructure failures and severe winter weather hazards. The goal is to quantitatively measure the threat experienced by Washtenaw County communities. By placing a monetary value on a hazard, a cost-benefit comparison can be made: the benefit of implementing a mitigation strategy compared to the cost of the hazard event.

Table 2 presents the results of the vulnerability assessment. The value of the vulnerability assessment is to provide a cost by which the mitigation strategies may be compared. A discussion of the determination is provided in the hazard section of the County Plan (Section 3.2). The methodology for each is presented in Appendix A of the County Plan.

Table 2. Vulnerability Assessment Summary

Rank	Hazard	Estimated Annual Cost
#1	Convective Weather	
	Tornado	\$5,078,755
	Severe Winds and Lightning	\$90,242,418
	Hail Storm	\$3,738,153
#2	Hazardous Material Transportation Incidents	\$6,838,963
#3	Hazardous Material Fixed Site Incidents	\$2,913,038
#4	Severe Winter Weather	\$36,191,763
#5	Infrastructure Failure	\$6,139,214

Village of Dexter



Village of Dexter

4.0 Hazard Goals and Strategies

The following sections present goals and strategies by hazard. Figure 2 presents the assets and hazards identified for the Village of Dexter, and may be referred to in the following sections. The goals, objectives and strategies are not an inclusive list; rather the goals, objectives and strategies are those that the Village is focusing on at this time.

The repetition of strategies reflects the need for their implementation, not the duplication of services. For example, distribution of educational materials should not be performed several times, throughout the year per hazard, rather one mailing regarding family preparedness kits would address all hazards for which this strategy is listed.

4.1 Non-Hazard Specific Goals, Objectives and Strategies

Goal: Integrate mitigation strategies into the Village General Development Plan

Mitigation Strategy: Plans

- Establish a subcommittee charged with amending the General Development Plan to include hazard mitigation goals and strategies, as applicable.

4.2 Hazard Specific Goals, Objectives and Strategies

Convective Weather

The Village of Dexter is fortunate to have two warning sirens which reach 100% of its population (Figure 3). Additionally, there are two disaster shelters in the Village. Other mitigation strategies can work in concert with these safety measures to optimize protection to Village residents.

Goal: Reduce the Village's vulnerability to convective weather storm hazards, minimize loss of life and injury, and damage to public property

Mitigation Strategy: Emergency Generators

- Secure funding to install emergency generators. An emergency generator should be installed at the Police and Fire Stations, Village Hall and shelters so that the Village may function when disasters occur.

Mitigation Strategy: Public Education

- Distribute an Emergency Preparedness booklet informing residents about actions to take during an event, or actions to minimize damage caused by an event. (See Family Preparedness Kit information box). The materials could be mailed with tax bills or other Village correspondence.

Mitigation Strategy: Maintenance

- Distribute annual reminders to ground utility providers, encouraging them to keep power lines clear of trees and tree limbs. This would reduce the chance of electrical power failure for Villages residents and businesses.

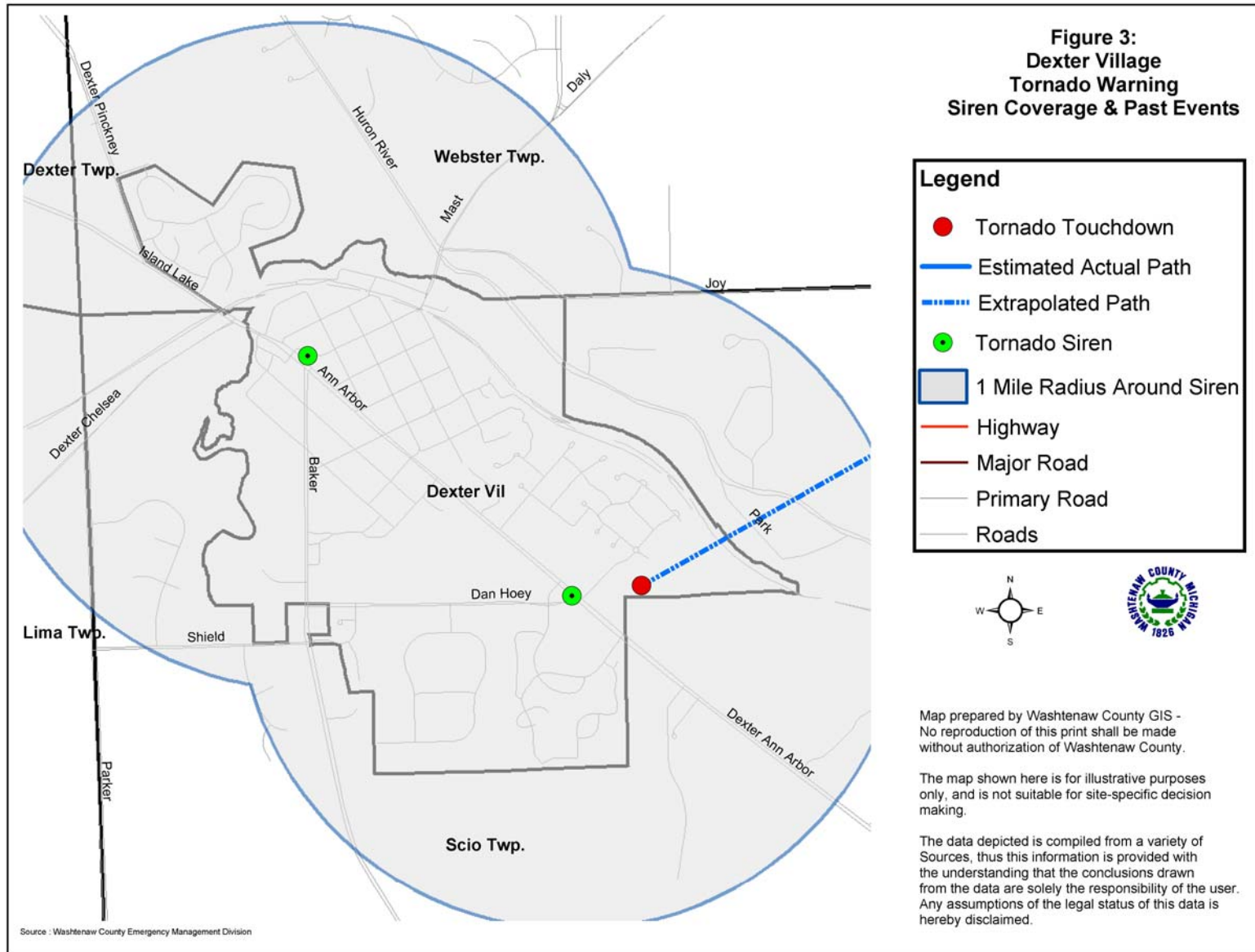
Mitigation Strategy: Training

- Continue to work with Washtenaw County Division of Emergency Management on weather spotter training and coverage. *Training is free of charge to anyone 18 years of age or older who is interested in being trained in severe weather identification, protection, and reporting procedures.*

Mitigation Strategy: Adequate Facilities

Expand or remodel the existing police and fire stations facilities. These facilities are outdated and lack space

Village of Dexter



Village of Dexter

needed for today's operations. Improvement to this building will improve the capabilities of responding agencies by providing needed space for training, storage office and command and control facilities.

Severe Winter Weather Hazard

Above ground power supply, coupled with mature trees can be a disaster when heavy snows or freezing rain occurs. The weight of the frozen precipitation causes tree limbs to fall on power lines, causing power outages, which is a significant problem. Loss of power in the winter generally means loss of heat for citizens. Falling tree limbs also damage property, block emergency routes and roadways, endanger lives and are very costly to clean up and remove.

Goal: Reduce the damage and impacts caused by severe winter weather hazards continue to reduce the impact of such an event on the community.

Mitigation Strategy: Maintenance

- Distribute annual reminders to ground utility providers, encouraging them to keep power lines clear of trees and tree limbs, specifying addresses and locations of problem trees.

Mitigation Strategy: Public Education

- Distribute an Emergency Preparedness booklet to residents. See strategy under Convective Weather for further discussion.

Hazardous Materials Fixed Site Incidents

There are several facilities in Dexter Village that store, use and manufacture hazardous materials. Such sites have the potential to have a hazardous materials incident, impacting people and causing harm to the environment. Fortunately, the

Family Preparedness Kits

1. Have Emergency Supplies at the ready:
 - A three-day supply of water one gallon/person/day and food that won't spoil
 - One change of clothing, footwear, and blanket/sleeping bag per person
 - First aid kit including family prescription medications
 - Tools: flashlight, battery-powered radio and extra batteries
 - Extra car keys, credit cards, cash or travelers checks
 - Sanitation supplies
 - Special items for infant, elderly or disabled family members
 - Extra pair of glasses
 - Locate the fuse box water service main and natural gas main and learn how to turn on and off.
2. Create a disaster plan where to meet, contact numbers, who will take care of the family pet, take first aid, learn how to use a fire extinguisher, etc.
3. Practice the Plan and maintain supplies!

If having electric power is extremely important to you, consider having a qualified electrician install an emergency generator before a disaster strikes!

For more information, see FEMA website at <http://www.fema.gov/pdf/library/yfdp.pdf>

Village of Dexter

entire Village is within reach of a warning siren, which would alert the community in the event of a fixed site event.

Goal: Reduce the risks of hazardous material fixed site incidents in the Village by increasing the ability to respond and minimizing the impacts to the citizens, environment and economy.

Mitigation Strategy: Training and Support

- Ensure that the Dexter Area Fire Department is knowledgeable of the locations and chemicals stored at facilities. Provide employee training for hazardous materials, storage, handling and transportation.
- Update the in-house evacuation plan to facilitate a quick response in the event of an emergency.
- Support and cooperate with the Washtenaw County Pollution Prevention Program.
- Continue to participate in the Washtenaw County Emergency Preparedness Plan.

Mitigation Strategy: Ordinances

- Adopt the Hazardous Spills Expense Recovery Ordinance, a vehicle whereby a local unit of government may recover costs of response and recovery to a release of hazardous materials.
- Adopt a Fire Protection Ordinance as a preventative measure. The ordinance provides a legal vehicle for Fire Officials to inspect and enforce nationally recognized codes.

Mitigation Strategy: Public Education

- Distribute an Emergency Preparedness booklet to residents. See strategy under Convective Weather for further discussion.

Public Health Emergencies

Dexter Village has a concentrated population. The most likely public health emergency scenario would be failure of the wastewater treatment facility. This may cause widespread sewer backups, polluting the water ways (rivers, lake, wetlands) and exposing the public to contaminants. The water and sewer systems are also potential breeding grounds for West Nile or other mosquito born diseases.

Goal: Increase the Village's ability to prepare for and respond to a public health emergency.

Mitigation Strategy: Prevention

- Continue to treat known breeding areas to prevent the outbreak of diseases such as West Nile.
- Offer opportunities to seniors for flu vaccinations and encourage all residents to be vaccinated for all communicable diseases.
- Provide radon test kits to residents. Radon test kits are also available through Washtenaw County.

Mitigation Strategy: Emergency Generators

- Secure funding to install emergency generators. Generators may be necessary in an emergency to preserve vaccinations. See strategy under Convective Weather for further discussion.

Village of Dexter

Mitigation Strategy: Plans

- Prepare and evacuation or shelter-in-place plan and follow recommendations presented in the Plan.

Mitigation Strategy: Public Education

- Work with the Washtenaw County Department of Public Health on educational campaigns and dissemination of information to prevent public health emergencies.

Hazardous Materials Transportation Incidents

There is a major railroad that runs along the northern border of the Village. The railroad, with Dexter-Ann-Arbor Road, are the most vulnerable in terms of hazardous materials transportation incidents. There are also a number of manufacturing facilities located in the Village, further increasing the potential for this type of hazard event.

Goal: Reduce the risk of damage, loss of life, and other costs resulting from hazardous material transportation incidents

Mitigation Strategy: Training

- Continue to support training and equipment for the Washtenaw County Hazardous Materials (HazMat) team and the Dexter Area Fire Department HazMat Team.

Mitigation Strategy: Ordinances

- Adopt the Hazardous Spills Expense Recovery Ordinance, a vehicle whereby a local unit of government may recover costs of response and recovery to a release of hazardous materials.
- Adopt a Fire Protection Ordinance as a preventative measure. The ordinance provides a legal vehicle for Fire Officials to inspect and enforce nationally recognized codes.

Infrastructure Failure

Critical infrastructure exists within Dexter Village. Not only with regard to power, but with bridges and roads. One vulnerable area in this regard is the Main Street Bridge over Mill Creek.

Goal: Decrease the Village's vulnerability to infrastructure failures and continue to strengthen the Village's ability to assist its citizens during an event.

Mitigation Strategy: Emergency Generators

- Secure funding to install emergency generators at the Police and Fire Stations, Village Hall and shelters. See Mitigation Strategy 1, Convective Weather for further discussion.

Mitigation Strategy: Maintenance

- Distribute annual reminders to ground utility providers, encouraging them to keep power lines clear of trees and tree limbs, specifying addresses and locations of problem trees.

Mitigation Strategy: Public Education

- Distribute an Emergency Preparedness booklet (See Mitigation Strategy 2, Convective Weather for further discussion).

Goal: Ensure transportation network is sound

Mitigation Strategy: Bridge Repair

- Work with the Washtenaw County Road Commission to study the Main Street Bridge over Mill Creek. The findings of the study should be implemented so that the bridge is structurally sound.

Village of Dexter

Dam Failures

There is one dam located in the Village –the Mill Creek dam. A dam failure would precipitate a flood hazard. The warning sirens already in operation at the Village should be sounded in the event of a dam failure.

Goal: Reduce the potential for a dam failure

Mitigation Strategy 1: Structural Improvements to Dam

- Secure funding to implement changes recommended in bi-annual inspection reports. The State of Michigan inspects the dams every two years, which include recommendations with regard to dam repairs, operation or maintenance.

5.0 Implementation, Funding and Monitoring

The purpose of this plan is to identify mitigation strategies that will be implemented before, during or after a disaster to permanently eliminate or reduce risks to human life and property from natural, technical or societal hazards. The following sections present implementation actions, funding sources, and the method for monitoring the plan.

5.1 Implementation

The following schedule is given for hazard mitigation strategies described in Section 4.0. Completion dates have not been included as such dates are subject to uncertain factors, and will only begin after the mitigation strategy has been approved. While all strategies are important, priority is has been given to those that may be funded by a FEMA hazard mitigation grant program (see Section 5.2). Action on strategies will depend upon staff, resource and funding availability.

High Priority Strategies

Mill Bridge Repair Work

Responsible Agency: Village of Dexter

Estimated Cost: To be determined after completion of inspection, study.

Mill Creek Dam Repair Work

Responsible Agency: Village of Dexter

Estimated Cost: To be determined after completion of inspection, study.

Emergency Generators at Police Station, Fire Station and Village Hall

Responsible Agency: Village of Dexter

Estimated Cost: \$30,000 per generator.

Other Important Strategies

Training for First Responders, Hazardous Materials Team

Responsible Agency: Village of Dexter

Estimated Cost: Staff time.

Expansion or Remodeling of Police and Fire Stations

Responsible Agency: Village of Dexter

Estimated Cost: To be determined.

Public Education (brochures, pamphlets)

Responsible Agency: Village of Dexter

Estimated Cost: \$2,000 annually.

Adopt Spill Cost Recovery Ordinance and Fire Protection Ordinance

Responsible Agency: Village of Dexter

Estimated Cost: Staff time.

Amend Master Plan to include hazard mitigation goals and strategies as applicable

Responsible Agency: Village of Dexter

Estimated Cost: Staff time.

Village of Dexter

5.2 Sources of Financial Assistance

Implementation of the mitigation strategies is often dependent on funding assistance from Federal and State sources. FEMA provides funding for structural projects through the hazard mitigation grant programs. These include the Hazard Mitigation Grant Program, Pre-Disaster Mitigation Assistance Program, and the Flood Mitigation Assistance Program.

FEMA emphasizes the implementation of structural mitigation strategies. The strategies that are a priority for FEMA and are a priority for the Village of Dexter include: bridge repair work, dam repair work and emergency generators. Financial support for other mitigation strategies proposed in this plan may be sought through alternative funding sources. For example, funds for public outreach, equipment and training may be obtained through the FEMA Emergency Management Performance Grant. Projects may be implemented with the assistance of non-profit organizations, or funds secured from Community Foundations. There are many State and Federal programs that are available to Local Units of Government, as provided in Attachment 2.

5.3 Monitoring of the Plan

The plan will be monitored on a regular basis, and is the responsibility of the Village Manager. The plan will be an annual agenda item for the Village Council. At a minimum, during its review, the Council will discuss the monitoring of the plan, the number of projects pursued, or reasons for lack of pursuit for approved projects. Prior to the meeting, the Washtenaw County Emergency Management Division can be contacted for updates or recommended amendments to the plan.

To assist with the annual evaluation and review of the plan, the Village may consider forming a local hazard mitigation

committee. The committee could also be charged with identifying methods of obtaining public input.

Although review of the plan will occur annually, and a formal revision may not be needed each year, an update of the plan will be prepared every five years, based on annual reviews, amendments, monitoring, evaluation and accumulation of official feedback and public input. The revised plan will again be adopted by the Village Council.

**Attachment 1
County Hazard Plan**

**Attachment 2
Alternative Funding Sources**

Village of Dexter

Funding Source	Civil Disturbance	Drought	Earthquake	Extreme Temperature	Scrap Tire Facilities	Structural Fire	Wildfire	Dam Failure	Flooding: Riverine	Flooding: Urban	Hazardous Materials Incidents - Fixed Site	Hazardous Materials Incidents - Transportation	Infrastructure Failure	Nuclear Attack	Nuclear Power Plant Incidents	Oil/Nat Gas Well Incidents	Petrol/Nat Gas Pipeline Incidents	Public Health Emergencies	Sabotage/Terrorism	Hail	Lightning	Severe Winds	Severe Winter Weather	Transportation Accidents	Tornado	Financial Assistance	Technical Assistance
FEDERAL SOURCES																											
Business and Industry Loans	√	√	√	√	√	√	√	√	√	√	√	√	√	√	√	√	√	√	√	√	√	√	√	√	√	√	√
CDC-Investigations and Technical Assistance																		√									√
CEPP Technical Assistance Grants Program											√	√						√								√	√
Community Assistance Program-State Support Services Element (NFIP)								√	√	√																	√
Community Development Block Grant/Economic Development Initiative									√	√			√										√				√
Community Development Block Grant/Entitlement Grants	√	√	√	√	√	√	√	√	√	√	√	√	√					√	√	√	√	√	√	√	√	√	√
Community Development Block Grant/Small Cities Program	√	√	√	√	√	√	√	√	√	√	√	√	√					√	√	√	√	√	√	√	√	√	√
Community Development Block Grant/State's Program	√	√	√	√	√	√	√	√	√	√	√	√	√					√	√	√	√	√	√	√	√	√	√
Community Disaster Loans	√	√	√	√	√	√	√	√	√	√	√	√	√	√	√	√	√	√	√	√	√	√	√	√	√	√	√
Community Facilities Loans and Grants	√	√	√	√	√	√	√	√	√	√	√	√	√	√	√	√	√	√	√	√	√	√	√	√	√	√	√
Community Outreach Partnership Center Program	√	√	√	√	√	√	√	√	√	√	√	√						√	√	√	√	√	√	√	√	√	√
Conservation Reserve Program									√	√															√	√	√
Cooperative Forestry Research							√																			√	√
Cora Brown Fund	√	√	√	√	√	√	√	√	√	√	√	√			√	√	√	√	√	√	√	√	√	√	√	√	√
Direct Housing Natural Disaster (Very Low/Low Income Loans)							√	√													√	√			√	√	√
Disaster Housing Program	√	√	√	√	√	√	√	√	√	√	√	√	√	√	√	√	√	√	√	√	√	√	√	√	√	√	√
Disposal of Federal Surplus Property (Transfers)									√																	√	√
Economic Adjustment Assistance								√	√	√													√			√	√
Economic Development Tech Assistance									√																	√	√
Emergency Advance Measures for Flood Protection								√	√	√																√	√

Village of Dexter

Funding Source	Civil Disturbance	Drought	Earthquake	Extreme Temperature	Scrap Tire Facilities	Structural Fire	Wildfire	Dam Failure	Flooding: Riverine	Flooding: Urban	Hazardous Materials Incidents - Fixed Site	Hazardous Materials Incidents - Transportation	Infrastructure Failure	Nuclear Attack	Nuclear Power Plant Incidents	Oil/Nat Gas Well Incidents	Petrol/Nat Gas Pipeline Incidents	Public Health Emergencies	Sabotage/Terrorism	Hail	Lightning	Severe Winds	Severe Winter Weather	Transportation Accidents	Tornado	Financial Assistance	Technical Assistance
FEDERAL SOURCES																											
Emergency Community Water Assistance Grants		√							√		√		√					√	√							√	
Emergency Conservation Program		√							√													√			√		
Emergency Flood and Shelter National Board Program	√	√	√	√	√	√	√	√	√	√	√	√	√	√	√	√	√	√	√	√	√	√	√	√	√	√	√
Emergency Management Institute-Resident Ed Program	√	√	√	√	√	√	√	√	√	√	√	√	√	√	√	√	√	√	√	√	√	√	√	√	√	√	√
Emergency Management Institute-Training Assistance	√	√	√	√	√	√	√	√	√	√	√	√	√	√	√	√	√	√	√	√	√	√	√	√	√	√	√
Emergency Management Performance Grants	√	√	√	√	√	√	√	√	√	√	√	√	√	√	√	√	√	√	√	√	√	√	√	√	√	√	√
Emergency Management-State and Local Assistance	√	√	√	√	√	√	√	√	√	√	√	√	√	√	√	√	√	√	√	√	√	√	√	√	√	√	√
Emergency Operations Flood Response and Post-Flood Response								√	√	√																√	
Emergency Rehabilitation of Flood Control Works								√	√																	√	
Engineering Grants	√	√	√	√	√	√	√	√	√	√	√	√	√	√	√	√	√	√	√	√	√	√	√	√	√	√	√
Farmland Protection Program									√																	√	
Fire Suppression Assistance							√																			√	
Fisheries Disaster Relief		√					√	√	√	√	√	√							√							√	
Flood Insurance								√	√	√																	√
Flood Mitigation Assistance									√	√																√	
Flood Plain Management Services								√	√	√																√	
Food Control Projects								√	√																	√	
Forestry Incentives Program																						√			√	√	
Forestry Research									√	√												√			√	√	
Grants for Public Works and Economic Development								√	√	√			√													√	

Village of Dexter

Funding Source	Civil Disturbance	Drought	Earthquake	Extreme Temperature	Scrap Tire Facilities	Structural Fire	Wildfire	Dam Failure	Flooding: Riverine	Flooding: Urban	Hazardous Materials Incidents - Fixed Site	Hazardous Materials Incidents - Transportation	Infrastructure Failure	Nuclear Attack	Nuclear Power Plant Incidents	Oil/Nat Gas Well Incidents	Petrol/Nat Gas Pipeline Incidents	Public Health Emergencies	Sabotage/Terrorism	Hail	Lightning	Severe Winds	Severe Winter Weather	Transportation Accidents	Tornado	Financial Assistance	Technical Assistance
FEDERAL SOURCES																											
Grants-in-Aid for Railroad Safety-State Participation												√												√			√
Habitat Conservation																											√
Hazard Mitigation Grant Program	√	√	√	√	√	√	√	√	√	√	√	√	√	√	√	√	√	√	√	√	√	√	√	√	√	√	√
HazMat Training Program for Implementation of SARA											√	√															√
Health Program for Toxic Substances and Disease Registry											√							√									√
Highway Planning and Construction													√													√	√
Historic Preservation Funds Grants-In Aid						√			√	√										√	√	√	√		√		√
HOME Investment Partnerships Program									√	√										√	√	√				√	
Hydrologic Research		√						√	√	√																	√
Individual and Family Grant Program		√	√	√			√	√	√	√																	√
Planning Grants (HazMat Emergency Preparedness Grant)											√	√															√
Motor Carrier Safety												√															√
National Dam Safety Program							√																				√
National Pollutant Discharge Elimination System Related State Program Grants																√	√	√									√
National Urban Search and Rescue Response System			√										√						√					√		√	
North American Wetlands Conservation Fund								√	√																		√
Nursing Homes						√																					√
Planning (Land and Water Conservation Fund Grants)									√																		√
Physical Disaster Loans	√		√		√	√			√	√			√						√	√	√	√	√		√	√	
Pipeline Safety																√	√										√

Village of Dexter

Funding Source	Civil Disturbance	Drought	Earthquake	Extreme Temperature	Scrap Tire Facilities	Structural Fire	Wildfire	Dam Failure	Flooding: Riverine	Flooding: Urban	Hazardous Materials Incidents - Fixed Site	Hazardous Materials Incidents - Transportation	Infrastructure Failure	Nuclear Attack	Nuclear Power Plant Incidents	Oil/Nat Gas Well Incidents	Petrol/Nat Gas Pipeline Incidents	Public Health Emergencies	Sabotage/Terrorism	Hail	Lightning	Severe Winds	Severe Winter Weather	Transportation Accidents	Tornado	Financial Assistance	Technical Assistance
FEDERAL SOURCES																											
Project Impact: Building Disaster-Resistant Communities	√	√	√	√	√	√	√	√	√	√	√	√	√	√	√	√	√	√	√	√	√	√	√	√	√	√	√
Protection Clearing and Straightening Channels									√																	√	
Protection of Essential Highways, Highway Bridge Approaches, and Public Works								√	√																	√	
Public Assistance Grant Program	√	√	√	√	√	√	√	√	√	√	√	√	√	√	√	√	√	√	√	√	√	√	√	√	√	√	√
Public Health and Social Services Emergency Fund (Post-Declaration Only)																		√								√	
Public Telecommunications Facilities Planning and Construction																								√	√		
Railroad Safety												√												√		√	
Resource Conservation and Development		√	√	√			√		√	√																	√
Rivers, Trails, and Conservation Assistance									√																		√
Rural Business Opportunity Grants									√																	√	
Rural Development Grants									√				√													√	
Rural Electrification Loans													√									√	√	√	√	√	
Rural Housing and Economic Development	√	√	√	√	√	√	√	√	√	√	√	√						√	√	√	√	√	√	√	√	√	√
Rural Housing Site Loans and Self-Help Housing and Development Loans									√																	√	
Snagging and Clearing for Flood Control								√	√																	√	
Soil and Water Conservation		√	√	√			√		√	√																	√
State and Community Highway Safety																								√			√
State Domestic Preparedness Equipment, Support Program																			√								√
Superfund State Site-Specific Cooperative Agreements											√							√								√	
Superfund Technical Assistance Grants for Citizen Groups at Priority Sites											√															√	√
Surveys, Studies, Investigations and Special Purpose Grants											√	√			√	√	√	√								√	

Village of Dexter

Funding Source	Civil Disturbance	Drought	Earthquake	Extreme Temperature	Scrap Tire Facilities	Structural Fire	Wildfire	Dam Failure	Flooding: Riverine	Flooding: Urban	Hazardous Materials Incidents - Fixed Site	Hazardous Materials Incidents - Transportation	Infrastructure Failure	Nuclear Attack	Nuclear Power Plant Incidents	Oil/Nat Gas Well Incidents	Petrol/Nat Gas Pipeline Incidents	Public Health Emergencies	Sabotage/Terrorism	Hail	Lightning	Severe Winds	Severe Winter Weather	Transportation Accidents	Tornado	Financial Assistance	Technical Assistance
FEDERAL SOURCES																											
Technology Development for Environmental Management												√			√												√
Very Low Income Housing Repair Loans/Grants				√		√	√		√											√	√	√			√		√
Very Low to Moderate Income Housing Loans				√		√	√		√											√	√	√			√		√
Water and Waste Disposal System for Rural Communities									√		√		√					√	√								√
Water/Waste Disposal Loans/Grants									√		√		√					√									√
Watershed Protection and Flood Prevention								√	√	√								√									√
Watershed Surveys and Planning		√							√																		√
Weatherization Assistance for Low-Income Persons				√																							√
Wetlands Protection-Development Grants									√	√																	√
Wetlands Reserve Program									√	√																	√
Wildlife Habitat Incentive Program									√																		√

Village of Dexter

Funding Source	Civil Disturbance	Drought	Earthquake	Extreme Temperature	Scrap Tire Facilities	Structural Fire	Wildfire	Dam Failure	Flooding: Riverine	Flooding: Urban	Hazardous Materials Incidents - Fixed Site	Hazardous Materials Incidents - Transportation	Infrastructure Failure	Nuclear Attack	Nuclear Power Plant Incidents	Oil/Nat Gas Well Incidents	Petrol/Nat Gas Pipeline Incidents	Public Health Emergencies	Sabotage/Terrorism	Hail	Lightning	Severe Winds	Severe Winter Weather	Transportation Accidents	Tornado	Financial Assistance	Technical Assistance
STATE OF MICHIGAN																											
Department of Agriculture																											
Energy Conservation Program									√														√			√	√
Groundwater Stewardship Program											√							√								√	√
Intercounty Drain Program (available to Drain Commissioner only)								√	√	√																	√
Economic Development Corporation																											
Community Development Block Grant									√	√			√													√	
Urban Land Assembly									√																	√	
Environmental Quality																											
Abandoned Well Mgmt. Program																		√								√	
Alternate Water Supply Replacement Program									√	√	√		√					√								√	
Brownfield Redevelopment Grants											√							√								√	√
Drinking Water Revolving Loan Fund													√					√	√							√	
Municipal Landfill Cost-Share Grant Program																		√								√	
Non-community Water Supply Program Grant																		√								√	
Scrap Tire Collection Site Cleanup Grants					√																					√	
State Revolving Loan Fund									√	√			√					√								√	
Wellhead Protection Program																		√								√	
Wetland Program Development									√	√																√	

Village of Dexter

Funding Source	Civil Disturbance	Drought	Earthquake	Extreme Temperature	Scrap Tire Facilities	Structural Fire	Wildfire	Dam Failure	Flooding: Riverine	Flooding: Urban	Hazardous Materials Incidents - Fixed Site	Hazardous Materials Incidents - Transportation	Infrastructure Failure	Nuclear Attack	Nuclear Power Plant Incidents	Oil/Nat Gas Well Incidents	Petrol/Nat Gas Pipeline Incidents	Public Health Emergencies	Sabotage/Terrorism	Hail	Lightning	Severe Winds	Severe Winter Weather	Transportation Accidents	Tornado	Financial Assistance	Technical Assistance	
STATE OF MICHIGAN																												
Housing Development Authority																												
Community Development Block Grants/Housing Resource Fund						√			√	√											√		√		√	√		
Home/Property Improvement Loans						√			√	√											√		√		√	√		
Department of Natural Resources																												
Habitat Improvement Fund Project Grants									√																		√	
Land and Water Conservation Fund									√																		√	
Natural Resources Trust Fund						√			√																		√	
Recreational Trails Program Grants									√																		√	
Urban and Community Forestry Program																							√	√		√	√	
Volunteer Fire Assistance					√	√	√																				√	
State Police																												
Emergency Management Performance Grants	√	√	√	√	√	√	√	√	√	√	√	√	√	√	√	√	√	√	√	√	√	√	√	√	√	√	√	
Flood Mitigation Assistance									√	√																	√	√
Hazard Mitigation Grant Program	√	√	√	√	√	√	√	√	√	√	√	√	√	√	√	√	√	√	√	√	√	√	√	√	√	√		
Individual and Family Grant Program									√	√			√														√	

Village of Dexter

Funding Source	Civil Disturbance	Drought	Earthquake	Extreme Temperature	Scrap Tire Facilities	Structural Fire	Wildfire	Dam Failure	Flooding: Riverine	Flooding: Urban	Hazardous Materials Incidents - Fixed Site	Hazardous Materials Incidents - Transportation	Infrastructure Failure	Nuclear Attack	Nuclear Power Plant Incidents	Oil/Nat Gas Well Incidents	Petro/Nat Gas Pipeline Incidents	Public Health Emergencies	Sabotage/Terrorism	Hail	Lightning	Severe Winds	Severe Winter Weather	Transportation Accidents	Tornado	Financial Assistance	Technical Assistance
STATE OF MICHIGAN																											
State Police (continued)																											
Interagency HazMat Public Sector Training and Planning Grants (HazMat Emergency Preparedness Grant)											√	√		√	√	√	√									√	
Project Impact	√	√	√	√	√	√	√	√	√	√	√	√	√	√	√	√	√	√	√	√	√	√	√	√	√	√	√
Public Assistance Grant Program	√	√	√	√	√	√	√	√	√	√	√	√	√	√	√	√	√	√	√	√	√	√	√	√	√	√	√
Department of Transportation																											
Rail Loan Assistance Program												√	√													√	
Trans. Econ. Development Fund								√	√	√																√	
Department of Treasury																											
Municipal Bond Authority-Local Government Loan Program				√		√			√	√			√						√	√	√	√	√	√		√	
Municipal Bond Authority-State Aid Note Program				√		√			√	√			√						√	√	√	√	√	√		√	