

Economic Development Support Document

A Comprehensive Plan for Washtenaw County

Table of Contents

Actors 100

Job Trends and the Workforce 104

Top 20 Employers in Washtenaw County 104

Industrial Parks in Washtenaw County 105

Annual Average Unemployment Rates for Washtenaw County, Michigan, and the U.S., 1990-2004 106

Annual Average Unemployment Rates for Washtenaw County, Michigan, and the U.S., 1990-2004 106

Educational Attainment of Residents in Washtenaw County, 2000 (25 years and older) 107

Educational Attainment of Residents in Washtenaw County, 2000 (25 years and older) 107

Percent Change in the Number of Jobs in Washtenaw County by Sector, 1990-2020 108

Number of Jobs in Washtenaw County by Sector, 1990-2020 108

Distribution of Jobs in Washtenaw County by Sector, 2000 109

Distribution of Jobs in Washtenaw County by Sector, 2020 109

Number of Jobs in Washtenaw County by Sector, 1990-2020 110

Wage Trends 111

Wage Trends - New Economy Positions in Washtenaw County 111

Selected Yearly Wage Trends in Washtenaw County, 1996-2000 112

Selected Hourly Wage Trends in Washtenaw County, 1996-2000 113

Commuting Patterns 114

Work Commute Patterns for Employed Washtenaw County Residents 16 years and older, 1990-2000 114

Where Residents of other Counties Working in Washtenaw County Commute *From* 114

Where Residents of Washtenaw County Working in other Counties Commute *To* 114

Resources 115

Actors

Key organizations involved with planning, maintaining, and improving the transportation network in Washtenaw County.

Centers for Corporate Training

Dedicated to partnering with business, industry and organized labor to face the challenges of the future. These centers conduct some of the most highly regarded training programs for U.S. auto industry and its supplier base, as well as for companies from many other industries.

The Center for Organizational Risk Reduction

Provides cutting edge training and consulting in occupational health and safety

Center for Quality

One of the largest University based suppliers of quality training and consulting in the country. It offers more than 30 different quality and productivity improvement programs, as well as customized programs for hundreds of companies each year.

Downtown Development Authorities (DDAs)

Governed by a Board appointed by the Local Unit of Government leadership and funded by the millage assessed on properties in the districts. Focused on enhancing business in the districts by market research, development planning, construction, renovation and rehabilitation and promoting economic growth.

Eastern Michigan University

The fourth-largest University in Michigan is located in the city of Ypsilanti and offers over 180 graduate and undergraduate programs. In 1992, a study detailed the economic and cultural impact of the school on Ypsilanti and Washtenaw County. It is estimated that through direct and indirect expenditures the University and its faculty and staff students and visitors infused approximately \$217 million into the local economy. In addition, the school is the county's fifth largest employer with over 1700 full-time employees, of which about 70 percent lived in Washtenaw County.

Economic Development Coordinating Council

Devoted to facilitating discussions about and coordinating efforts towards economic development in Washtenaw County. The EDCC has supported several specific economic development initiatives over the past few years including the establishment of the Washtenaw small-business development center.

Economic Development Corporations (EDCs)

An agency that is part of the county, cities, villages and townships. Provides low interest financing (industrial revenue bonds) for commercial and industrial properties. The county and numerous cities, villages and townships have EDCs which provide low interest financing (industrial revenue bonds) for commercial and industrial properties.

Employment Training and Community Services Group

Coordinates federal workforce development programs and activities in the county. This Board replaced the existing private industry council. A primary purpose of the Washtenaw workforce development board is to implement the governor's no-wrong-door-system so that all employment services of the state are coordinated from one organization.

Greater Detroit Business Attraction Council

An eight-county economic development effort led by the greater Detroit Chamber of Commerce and designed to market the region to incoming businesses.

Institute for Community and Regional Development

Carries out public service activities on behalf of the Eastern Michigan University in five areas of outreach: Economic Development/Workforce Development, Public Service Education, Groundwater Resources and Education, Geographic Information Systems and Management Information Systems.

Institute for Workforce Development

Offers customized employee training and classes to upgrade skills tailored for specific businesses and industries and coordinated with business labor and government within the county.

Job Training School

Offers unemployed individuals everything from counseling and skill assessment to training and job placement training, which is designed to meet employer specifications and utilizes government job training funds for those eligible.

Michigan Manufacturing Technology Center (MMTC)

A part of the Industrial Technology Institute (ITI) which offers technological assistance for the startup and growth of small to medium-sized manufacturers. ITI is a non-profit organization sponsored by the state and federal governments which provides fee for service assistance. MMTC assists businesses with such things as implementation of quality systems, selection and implementation of business systems, plant layouts, benchmarking, environmental projects and electronic commerce.

Michigan Technology Council

Mission is to improve the ability of companies and organizations in Michigan to develop and adopt new technologies, processes and methods of doing business. It has over 2000 members from more than 600 businesses, educational institutions and government agencies around the state. Also actively engages and promotes technology related projects which serve the economic well-being of its members and the Michigan economy.

Michigan Works Service Center / WDC

"Sector council" for IT and other targeted sectors.

Minority Business Owners of Washtenaw County

A non-profit organization dedicated to assisting small minority owned businesses to become established and grow. The program offers scholarships to area students, oversees a minority achievement program in which high school students are paired with business mentors, acts as a liaison among minority businesses and directs clients to other relevant organizations.

Regional Career and Technical Center

Vocational or career-related educational programs are provided for the three public secondary school districts in eastern Washtenaw County. Provides vocational and technical training to high school and adult education students in: auto body and mechanics, building trades, childcare, computerized accounting, cosmetology, graphic arts, machine shop, office laboratory, cooperative education, job placement, food, electrical and health occupations.

Southeast Michigan Council of Governments

A designated state planning and development region covering the seven counties of Livingston, Macomb, Monroe, Oakland, St. Clair, Washtenaw and Wayne. SEMCOG is in the business of regional planning and intergovernmental relations on behalf of local governments and state and federal governments. The organization is made up of County cities, villages, townships, community colleges, intermediate school districts and public universities.

Technical Training Office

Offers courses to fill apprenticeship requirements and is approved by both the Bureau of Apprenticeship and Training and the State of Michigan Department of Education.

The University of Michigan

One of the premier research universities in the world, the university has 51,000 students and 5,600 faculty at three campuses (Ann Arbor, Flint and Dearborn). UM's student body is drawn from across the state (approximately 20 percent), the nation and the world. UM is the largest pre-law and pre-medicine university in the country. Undergraduate, graduate and professional students are enrolled in 17 different schools and colleges and have access to 588 majors and 600 student organizations. UM receives over \$374 million in research grants and contracts annually. The nationally renowned UM Medical Center serves more than 800,000 patients each year and includes a medical school and seven hospitals.

Washtenaw County

General purpose governmental unit which serves as an administrative agent of the state as well as a local unit of government. Receives state and federal funds for economic development activities such as workforce development, road improvements and planning devoted to programs and projects throughout the county.

Washtenaw Development Council (WDC)

Devoted to stimulating development and expanding and retaining jobs within Washtenaw County, which is accomplished by promoting and marketing sites to prospective businesses, investors or developers. The main advantage of the WDC is that while it serves new industrial clients, it also focuses on retaining, supporting and expanding existing businesses within Washtenaw County.

Washtenaw Small-Business Development Center

An outreach program of Washtenaw Community College in partnership with the Michigan Small Business Development Center Network and a number of community organizations in the county. The center is an information clearinghouse and counseling center designed to help small-business access services and resources in the county. These services are meant to supplement programs of the Michigan Jobs Commission and other state agencies. They include business procurement and export development assistance, financial packaging, counseling, capital acquisition advice, license and permit information and identification of additional state and local resources available to business owners in Michigan.

Willow Run Economic Opportunity Initiative

The current effort to use the Willow Run area as a focus for economic revitalization efforts in eastern Washtenaw County is led by the Washtenaw County Administrator and State Representative. This is the latest in a series of institutional efforts arising from the closing of the Willow Run assembly plant by General Motors.

Workforce Development Board

Offering residents support to enter the workforce by spearheading local efforts to meet workforce needs.

Workplace Academies

Provides on-site skill enhancement for new technologies.

Workforce Education - Eastern Michigan University

Provides innovative services for developing management and leadership skills.

Ypsilanti Area Chamber of Commerce

A key actor in economic development in eastern Washtenaw County. The chambers mission is to represent the collective voice of business for building and maintaining a prosperous business environment and a positive community in eastern Washtenaw County.

Ypsilanti Area Visitors and Convention Bureau

Another key actor in economic development in eastern Washtenaw County. Agency staff respond to requests for information from prospective visitors, assemble and publish information on a variety of events and activities occurring in the area and sponsor and/or participate in numerous activities occurring in the area.

Ypsilanti Central Business Community

Consists of a volunteer Board and approximately 150 members. Their mission is public relations for the city's Central business district. Each year the CBC sponsors a business Expo, acquires funding for research and development and assists in creating partnerships for the commercialization of new technology.

Top 20 Employers in Washtenaw County

Job Trends and the Workforce

Top 20 Employers in Washtenaw County

No.	Company	Jobs
1	University of Michigan	15,594
2	U of M Hospital and Health Centers	8,569
3	Visteon Corp.	5,910
4	Ford Motor Co.	5,000
5	General Motors Corp.	4,739
6	Trinity Health	4,646
7	U.S. Government	2,607
8	Pfizer Inc.	2,600
9	Ann Arbor Public Schools	2,130
10	Eastern Michigan University	2,088
11	Borders Group, Inc.	1,406
12	Washtenaw County Government	1,388
13	ProQuest	936
14	Standard Federal Bank	934
15	City of Ann Arbor	820
16	Ann Arbor City	951
17	DTE Energy Co.	678
18	Ypsilanti Public Schools	658
19	Chelsea Community Hospital	639
20	U.S. Postal Service	580

Industrial Parks in Washtenaw County

Industrial Parks in Washtenaw County

	Industrial Park	Location	Total Acres	Acres Available
1	Airport Industrial Center	Ypsilanti Township	37	15
2	Airport Plaza	Pittsfield Township	78	14
3	Ann Arbor Commerce Center	Ann Arbor City	50	0
4	Ann Arbor Commerce Park	Pittsfield Township	90	10
5	Ann Arbor Research Park	Ann Arbor City	100	19
6	Ann Arbor Technology Park	Ann Arbor Township	600	0
7	Avis Farms Research & Business Park	Pittsfield Township	165	6
8	Chelsea Industrial Park	Chelsea City	28	0
9	Daniels Industrial Park	Sylvan Township	43	30
10	Dexter Business & Research Park	Dexter Village	105	0
11	Eisenhower Commerce Park	Ann Arbor City	25	0
12	Huronview Research Park	Ann Arbor City	13	2
13	Jackson Industrial Drive	Scio Township	52	0
14	Jackson Plaza Business Park	Scio Township	75	0
15	Manchester Industrial Park	Manchester Village	28	0
16	Milan Industrial Park	Milan City	24	7
17	Park Place for Business	Pittsfield Township	64	5
18	Parkland Plaza	Scio Township	150	12
19	Plymouth Park	Ann Arbor City	33	0
20	Rand Business Park	Scio Township	20	10
21	Redies Industrial Park	Saline City	97	15
22	Runway Plaza	Pittsfield Township	129	0
23	Saline Industrial Park	Saline City	50	3
24	Shelton Industrial Park	Saline City	64	8
25	State 12 Plaza	Pittsfield Township	45	34
26	State Street Business Park	Pittsfield Township	76	15
27	Tech Park West	Scio Township	8	4
28	Traverwood	Ann Arbor City	78	5
29	Codie Property (FUTURE)	Pittsfield Township	127	127
30	Sweetwater (PUD)	Pittsfield Township	44	0
31	Valley Ranch Industrial Park	Pittsfield Township	70	10
32	Washtenaw Business Park	Ypsilanti Township	393	85
33	Ypsilanti West Business Park	Ypsilanti City	55	0
34	Sauk Trail Industrial Park	Saline City	69	32
35	Avis Farms South	Pittsfield Township	157	65
36	Sylvan Business Center	Sylvan Township	12	0
37	Jomar RTM	Northfield Township	112	65
38	Geddes Center	Superior Township	400	350
	TOTAL:		3,765	948

Notes:

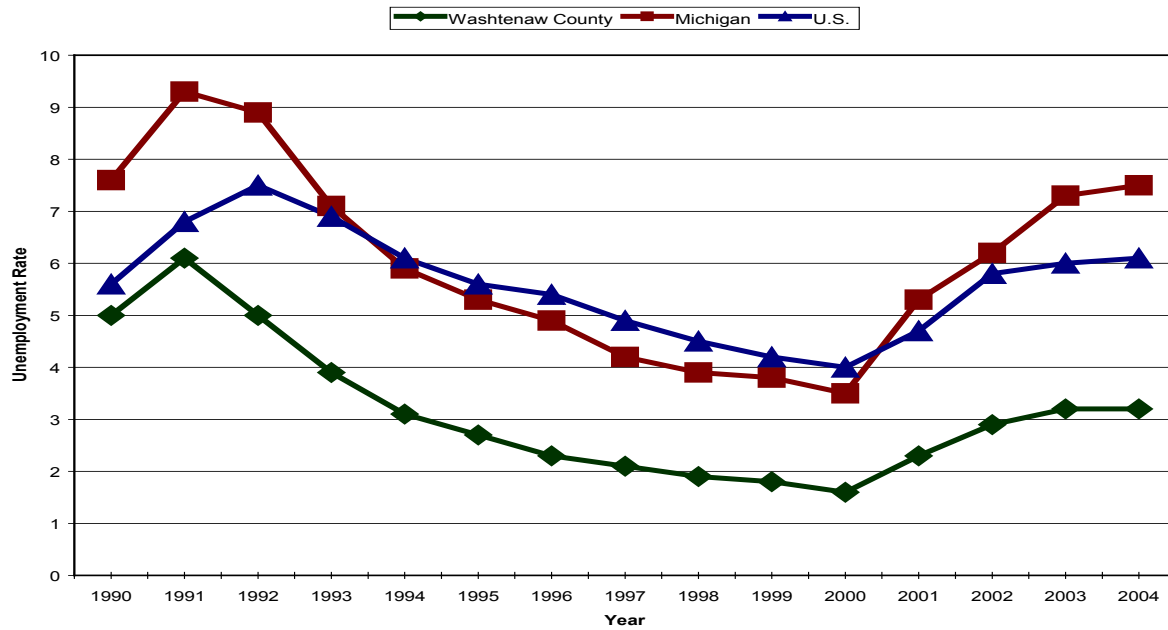
Park Place and Valley Ranch are adjacent.

Daniels and Sylvan parks will soon be serviced by sewer from Jackson; Sylvan Business Center is Site Condo (no land sale, build to suit)

Jomar has sewer but no water; must use well

Unemployment Rates

Annual Average Unemployment Rates for Washtenaw County, Michigan, and the U.S., 1990-2004

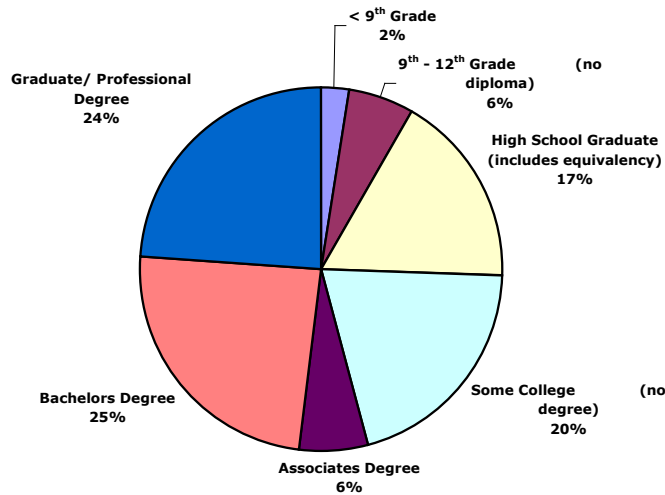


Annual Average Unemployment Rates for Washtenaw County, Michigan, and the U.S., 1990-2004

	1990	1991	1992	1993	1994	1995	1996	1997	1998	1999	2000	2001	2002	2003	2004
Washtenaw County	5	6.1	5	3.9	3.1	2.7	2.3	2.1	1.9	1.8	1.6	2.3	2.9	3.2	3.2
Michigan	7.6	9.3	8.9	7.1	5.9	5.3	4.9	4.2	3.9	3.8	3.5	5.3	6.2	7.3	7.5
U.S.	5.6	6.8	7.5	6.9	6.1	5.6	5.4	4.9	4.5	4.2	4	4.7	5.8	6	6.1

Source: DLEG/ESA/OLMI, Labor Market Analysis Section. BLS Current Population Survey Benchmark: 2003

Educational Attainment of Residents in Washtenaw County, 2000 (25 years and older)



Census: American Fact Finder. 1990 & 2000

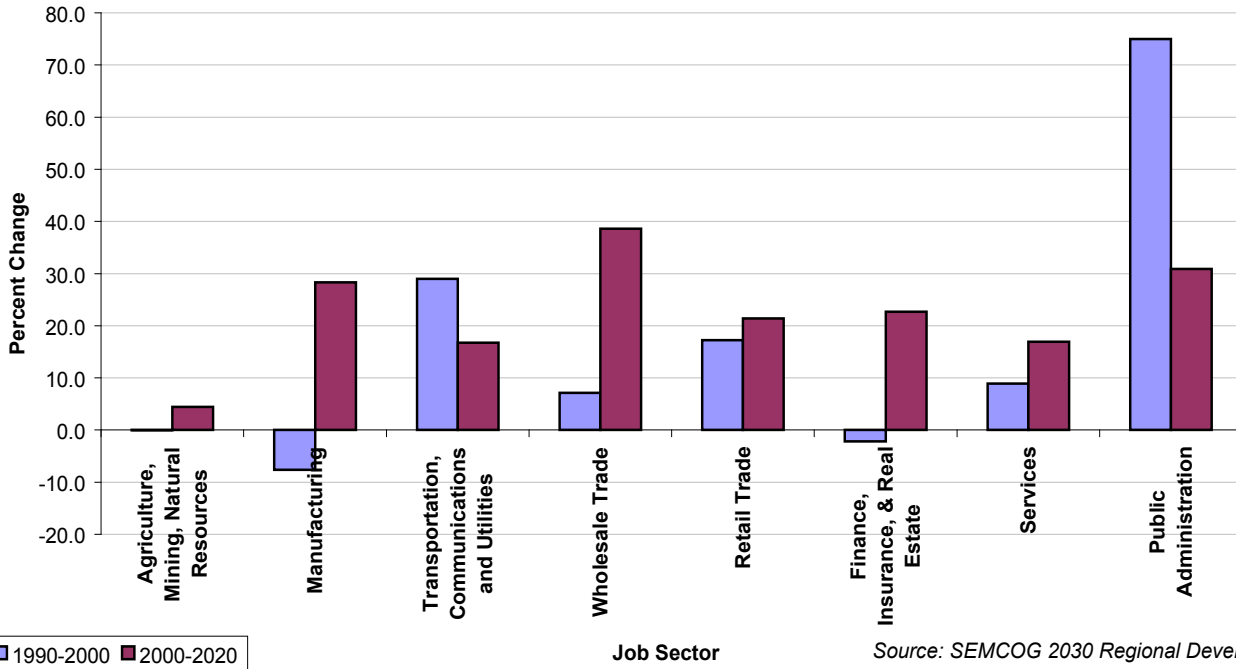
Educational Attainment of Residents in Washtenaw County, 2000 (25 years and older)

Level of Educational Attainment	1990		2000		Percent Change 1990-2000
	Number	Percent of Total	Number	Percent of Total	
< 9 th Grade	6,991	4.2%	4,673	2.4%	-33.2%
9 th - 12 th Grade (no diploma)	14,396	8.6%	12,043	6.1%	-16.3%
High School Graduate (includes equivalency)	32,406	19.4%	33,752	17.1%	4.2%
Some College (no degree)	33,027	19.8%	40,063	20.3%	21.3%
Associates Degree	10,379	6.2%	11,857	6.0%	14.2%
Bachelors Degree	35,249	21.1%	48,034	24.3%	36.3%
Graduate/ Professional Degree	34,766	20.8%	46,992	23.8%	35.2%
Total 25+ years	167,214	100.0%	197,414	100.0%	18.1%
Percent Highschool Graduate or Higher	145,827	87.2%	180,698	91.5%	23.9%
Percent Bachelor's Degree or Higher	70,015	41.9%	95,026	48.1%	35.7%

Census: American Fact Finder. 1990 & 2000

Number of Jobs in Washtenaw County

Percent Change in the Number of Jobs in Washtenaw County by Sector, 1990-2020



Source: SEMCOG 2030 Regional Development Forecast, Community Detail Report. 2002

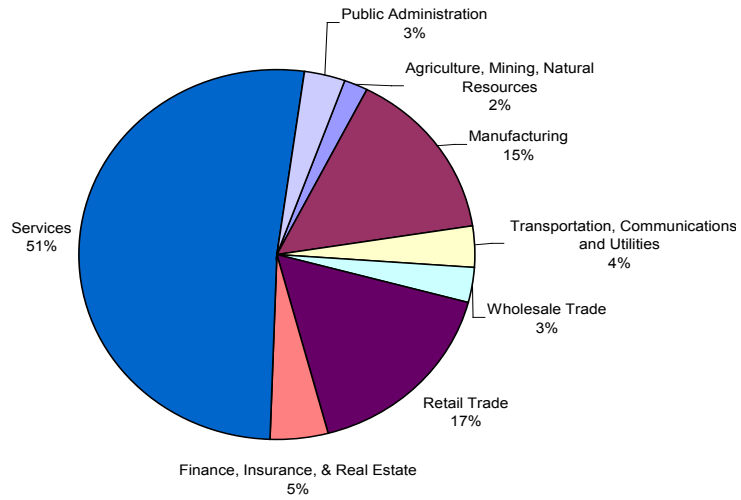
Number of Jobs in Washtenaw County by Sector, 1990-2020

Sector	1990		2000		2020		Percent Change 1990-2000	Percent Change 2000-2020
	Number	Percent	Number	Percent	Number	Percent		
Agriculture, Mining, Natural Resources	4,550	2.1	4,549	2.0	4,751	1.7	-0.0	4.4
Manufacturing	37,363	17.5	34,517	14.9	44,292	15.8	-7.6	28.3
Transportation, Communications and Utilities	6,912	3.2	8,916	3.8	10,411	3.7	29.0	16.8
Wholesale Trade	6,177	2.9	6,618	2.9	9,172	3.3	7.1	38.6
Retail Trade	33,166	15.5	38,888	16.7	47,211	16.9	17.3	21.4
Finance, Insurance, & Real Estate	10,970	5.1	10,729	4.6	13,163	4.7	-2.2	22.7
Services	110,208	51.5	119,998	51.7	140,323	50.2	8.9	16.9
Public Administration	4,549	2.1	7,960	3.4	10,418	3.7	75.0	30.9
Total Employment	213,895	100	232,175	100	279,741	100	8.5	20.5

Source: SEMCOG 2030 Regional Development Forecast, Community Detail Report. 2002

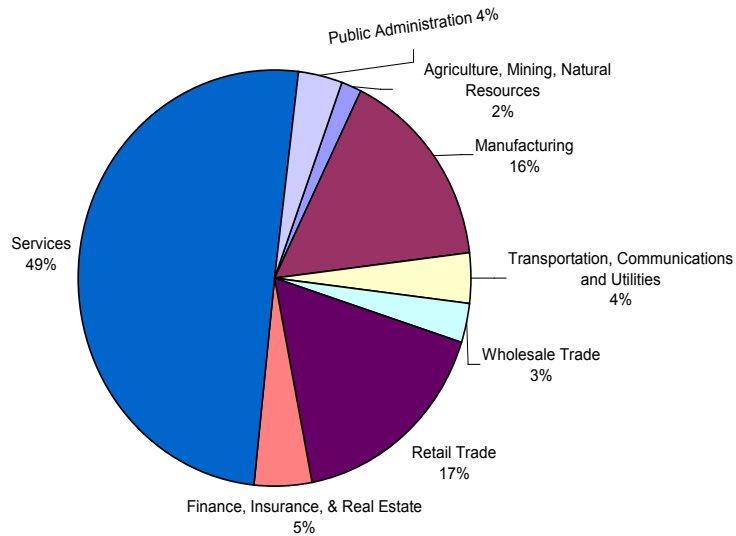
Distribution of Jobs in Washtenaw County

Distribution of Jobs in Washtenaw County by Sector, 2000



Source: SEMCOG 2030 Regional Development Forecast, Community Detail Report. 2002

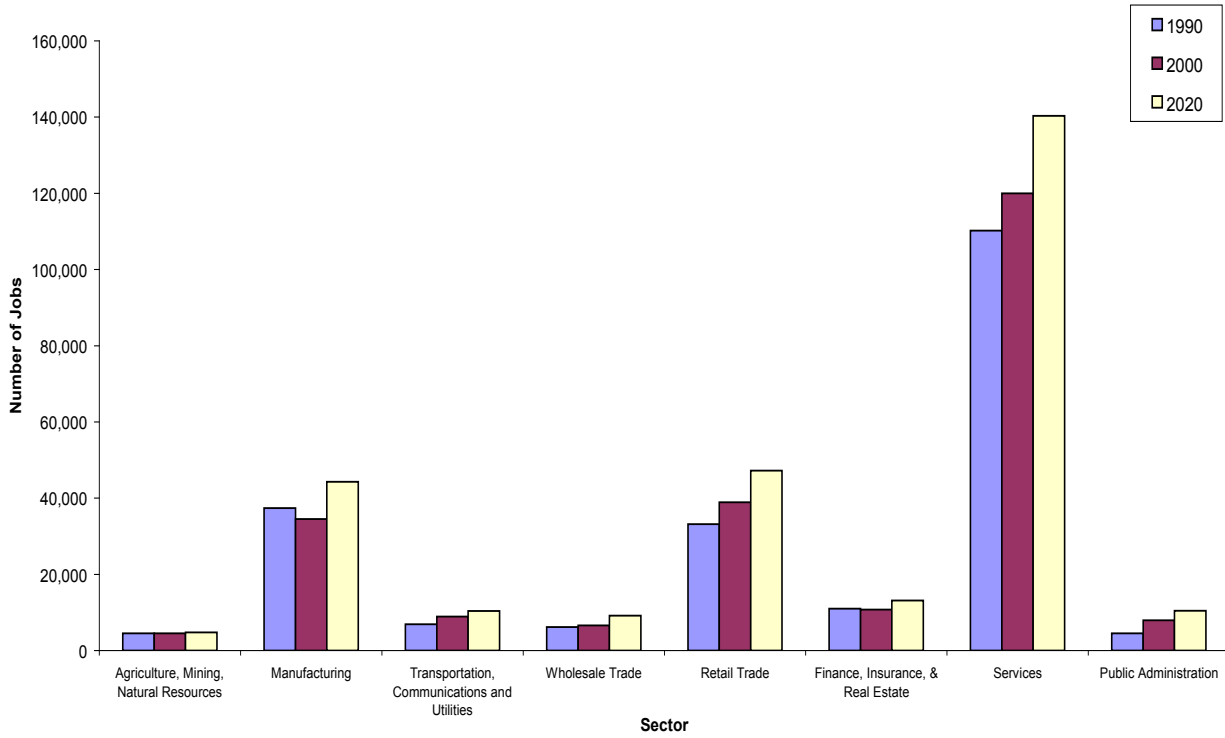
Distribution of Jobs in Washtenaw County by Sector, 2020



Source: SEMCOG 2030 Regional Development Forecast, Community Detail Report. 2002

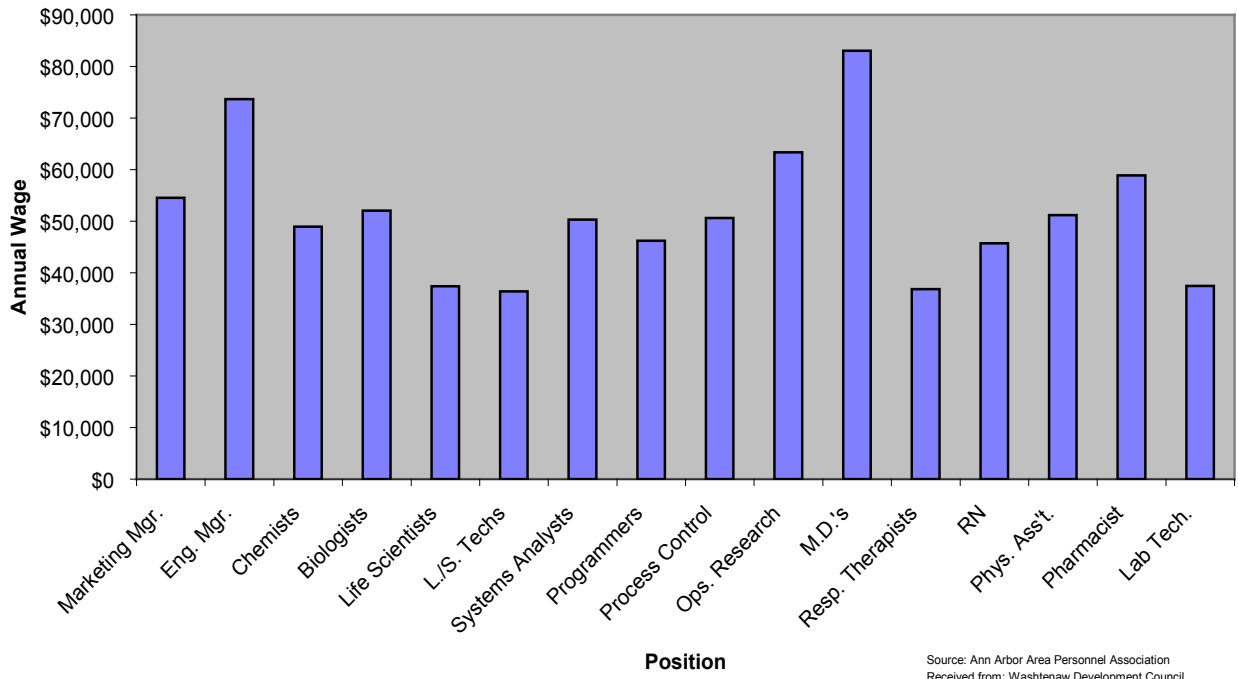
Number of Jobs in Washtenaw County by Sector

Number of Jobs in Washtenaw County by Sector, 1990-2020



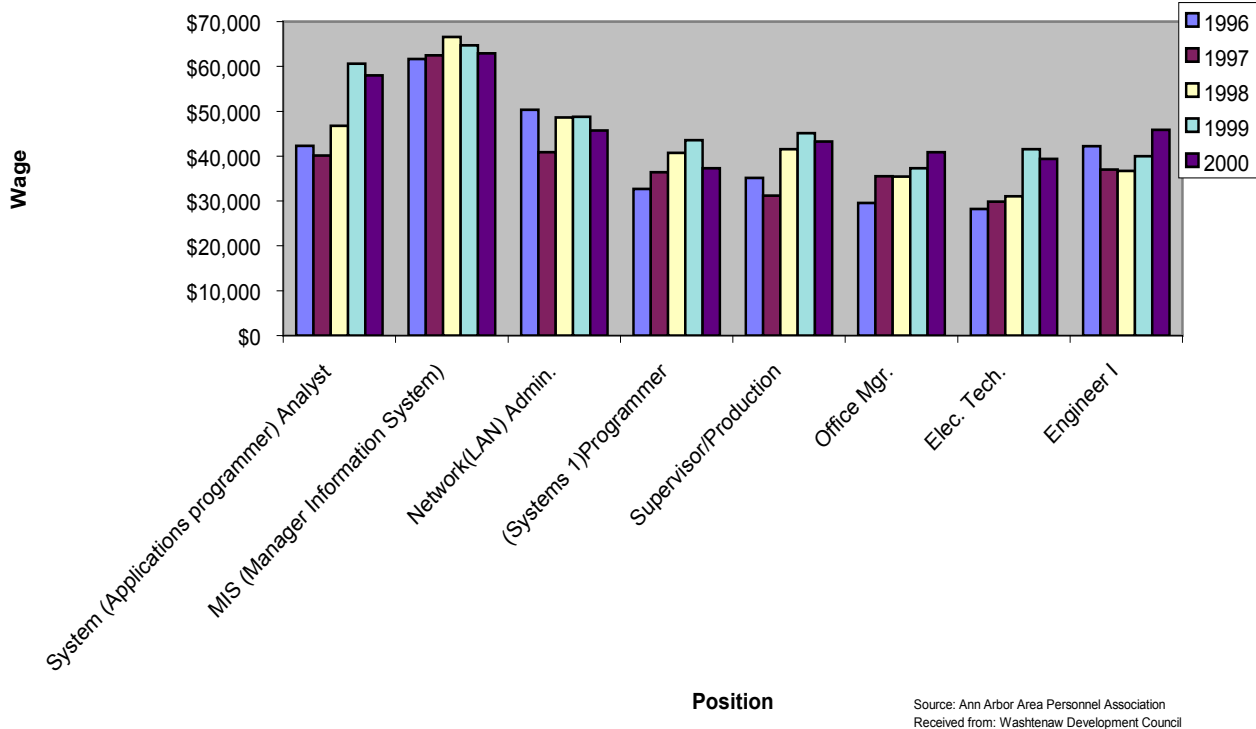
Wage Trends

Wage Trends - New Economy Positions in Washtenaw County



Selected Yearly Wage Trends in Washtenaw County

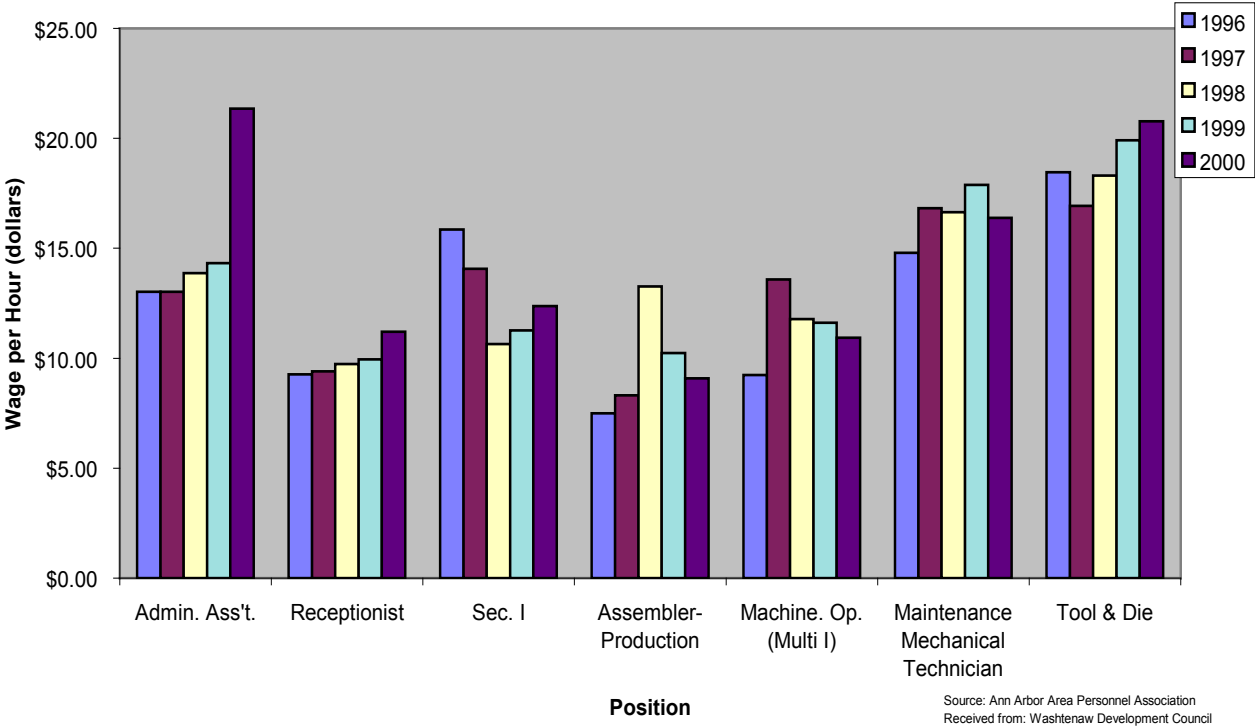
Selected Yearly Wage Trends in Washtenaw County, 1996-2000



Source: Ann Arbor Area Personnel Association
 Received from: Washtenaw Development Council

Selected Hourly Wage Trends in Washtenaw County

Selected Hourly Wage Trends in Washtenaw County, 1996-2000



Commuting Patterns

Commuting Patterns

Work Commute Patterns for Employed Washtenaw County Residents 16 years and older, 1990-2000

	1990	Percent of total workers	2000	Percent of total workers	Percent Change 1990-2000
Total employed workers	151,680	100.00	172,373	100.00	13.64
Workers who worked in county of residence (Washtenaw)	122,639	80.85	129,808	75.31	5.85
Workers who worked outside county of residence (Washtenaw)	24,893	16.41	37,620	21.82	51.13
Workers who worked outside state of residence (Washtenaw, MI)	1,195	0.79	1,741	1.01	45.69

Source: 1990 & 2000 Census

Where Residents of other Counties Working in Washtenaw County Commute *From*

County of Residence	Number of Workers
Washtenaw Co. MI	129,808
Wayne Co. MI	25,015
Livingston Co. MI	11,033
Jackson Co. MI	8,223
Lenawee Co. MI	7,008
Oakland Co. MI	6,723
Monroe Co. MI	4,587
Ingham Co. MI	1,642
Genesee Co. MI	1,054
Macomb Co. MI	952
Lucas Co. OH	867
Hillsdale Co. MI	325

Source: 2000 Census Data

Where Residents of Washtenaw County Working in other Counties Commute *To*

Location of Workplace	Number of Workers
Washtenaw County, MI	129,808
Wayne County, MI	23,269
Oakland County, MI	6,864
Livingston County, MI	2,250
Monroe County, MI	1,085
Jackson County, MI	1,044
Lenawee County, MI	872
Macomb County, MI	715
Ingham County, MI	532
Lucas County, OH	418
Genesee County, MI	324
Cook County, IL	149

Source: 2000 Census Data

Resources

Web Sites for Main Economic Development Agencies

Airport Industrial Center	www.swishercommercial.com
Ann Arbor Area Chamber of Commerce	www.annarborchamber.org
Ann Arbor Area Convention & Visitors Bureau	www.annarbor.org
Ann Arbor Downtown Development Authority	www.ci.ann-arbor.mi.us/DDA/index.html
Ann Arbor Export Assistance Center	www.usatrade.gov
Ann Arbor IT Zone	www.annarboritzone.org
Chelsea Area Chamber of Commerce	www.chelseaweb.com
Detroit Regional Chamber of Commerce	www.detroitchamber.com
Eastern Michigan University	www.emich.edu
Home Builders Association of Washtenaw County	www.hbawc.org
Michigan Economic Development Corporation	www.michigan.org
National Center for Manufacturing Sciences	www.ncms.org
Small Business Development Center	www.washtenaw.cc.mi.us/comm/sbdc
State of Michigan	www.michigan.gov
State of Michigan Chamber of Commerce	www.michamber.com
University of Michigan	www.umich.edu
US Census Information	www.census.gov
Washtenaw Community College	www.washtenaw.cc.mi.us
Washtenaw Economic Development Council	http://wdc-econdev.com/
Ypsilanti Area Chamber of Commerce	www.ypsichamber.org
Ypsilanti Area Convention & Visitors Bureau	www.ypsilanti.org
Ypsilanti Downtown Development Authority	www.ypsidda.org
Ypsilanti Marriott at Eagle Crest	www.eaglecrestresort.com

Fulton, George A. and Grimes, Donald R. *The Economic Outlook for the Ann Arbor Metropolitan Area*. Institute of Labor and Industrial Relations, University of Michigan. Annual Publication 1997-2005.

LANDVEST Market Economics & Development Consultants, Inc. *Economic Development Strategic Plan for Eastern Washtenaw County*. 1996.

Southeast Michigan Council of Governments. *2025 Regional Transportation Plan for Southeast Michigan*, Detroit, Michigan, 2000.

Washtenaw County Metropolitan Planning Commission. *Economic Activities in Washtenaw County: An Employment Study, 1960-1980*. 1983.

Washtenaw County Workforce Development Board. *Strategic Planning Process*. 2002.

Washtenaw County Metropolitan Planning Commission and Washtenaw Development Council. *Inventory of Industrial Parks in Washtenaw County*. 1997.