



**Washtenaw County Consortium for
Solid Waste Management**

MEETING AGENDA

Subaru Research and Development Inc.
3995 Research Park Dr.
Ann Arbor, MI 48108

- Map on Reverse -

Thursday, February 24, 2005

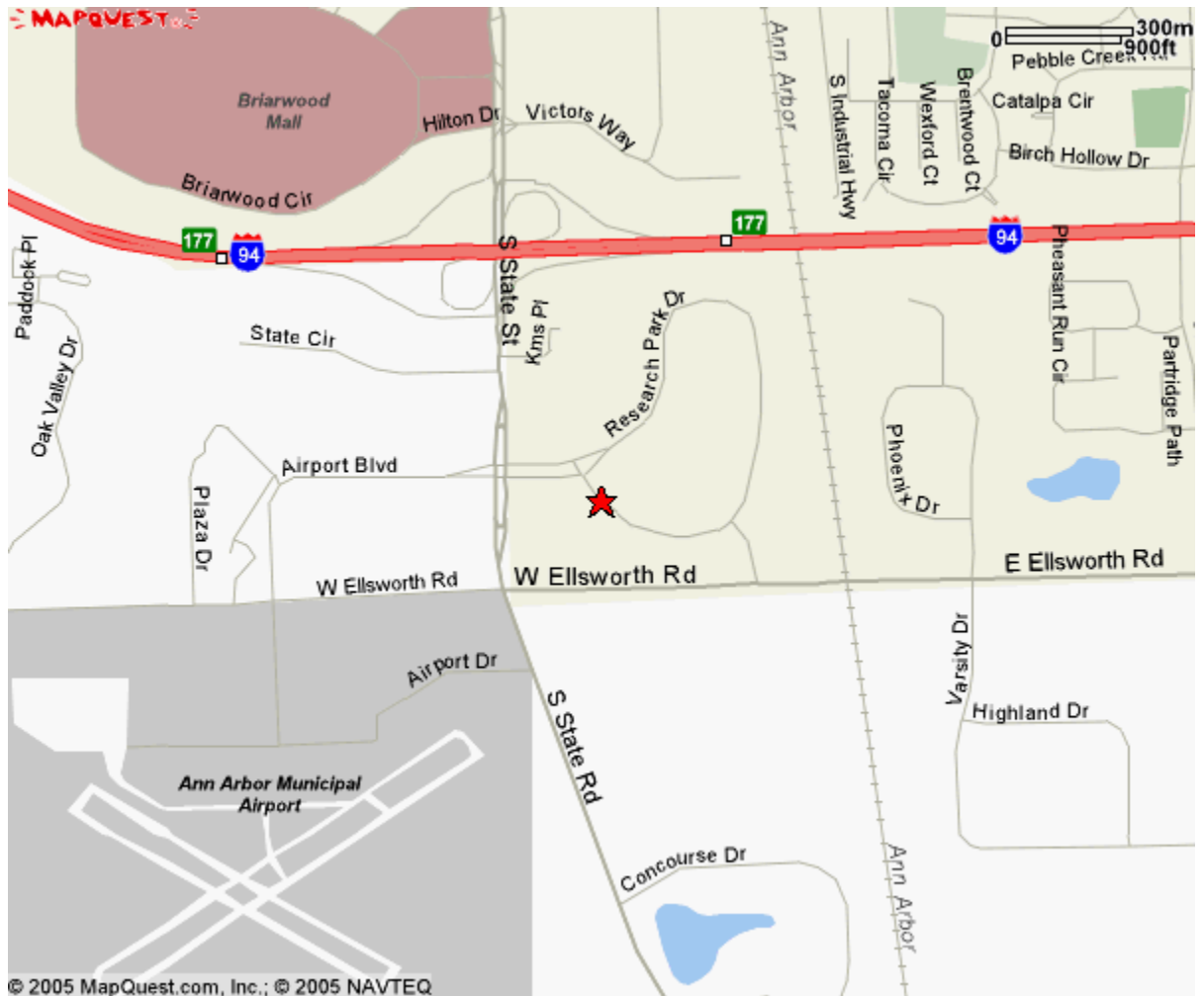
Composting
(Amy Freeman-Rosa)

Tour of Subaru at 5:00 p.m.
Meeting begins 5:30 p.m.

1. Call to Order/Introductions
2. Approval of Agenda (2-24-05)
3. Approval of Minutes (1-27-05)
4. Composting
5. Nominations for WCCSWM Chair
6. Best Management Practices
7. Local Community Updates
8. Adjourn

Township Representatives- If you are unable to join us, please designate a representative to attend in your place. Thank you!

Subaru Research & Development Inc
3995 Research Park Dr
Ann Arbor, MI
48108



WCCSWM Meeting Minutes
Thursday, January 27, 2005
Saline Municipal Building

Members Present:

Pierre Gonyon	SJMHS
George Danneffel	City of Saline
Pete Murdock	Recycle Ann Arbor
Chris Simmons	City of Ypsilanti
Michael-David BenDor	Superior Township
Corinne Sikorski	Sylvan Township
Joe Zurawski	York Township

Others Present:

Richard Stefani	Manchester Township
Jeff Krmarik	Washtenaw County DPW
Marshall Labadie	Washtenaw County DPW
Lauren Sullivan	Washtenaw County DPW

1. Call to Order

Chris Simmons called the meeting to order at 5:33. Introductions were made.

2. Approval of Agenda for (1-27-05)

The consortium approved of the agenda.

3. Approval of Minutes (12-02-04)

The consortium approved of the minutes.

4. Landscape Planning and Best Management Practices Guide

Chris Simmons wants the consortium to produce an online guide of the best solid waste management practices to be given to household members in the county. He said that since the information is already out there, the consortium simply needs to reorganize it into an easily accessible form. He suggested a website because it would be easy to update. Corrine Sikorski also suggested making some form of hard copy to encourage people to look at the website, and for those without internet access. Jeff Krmarik also encouraged the printing of several documents once or twice a year to promote the final product. Simmons agreed to the importance of a printed version, but limiting this version to an outline that leads readers to the website. Marshall Labadie suggested using small business card sized CD's in order to compact the document, and make it more user friendly.

Simmons suggested forming subcommittees to work on the different subsections of the document. The sections so far decided by the consortium are as follows:

1. Solid Waste – recycling, what can and cannot be put in landfills, 3T's etc
2. Green Waste – proper landscaping techniques, yard waste, composting
3. Energy Conservation, Air and Water Quality – green building techniques

4. Home Toxics

Other categories that could be included are:

1. Business Section – instructing businesses on how to reduce waste, Waste Knot etc
2. Education/Economic Valuation – Explain the importance of recycling/conservation in intellectual and monetary terms

To promote this document in final form, many consortium members suggested working with the schools to publicize information and Michael-David BenDor suggested convincing the local governments to repeatedly print a logo on tax forms, or send out a flyer in every government and municipal mailing. Pierre Gonyon also suggested placing a small ad in the phonebook in case citizens turn to that first with their solid waste questions. Krcmarik would also like to inform the waste haulers about the document because many citizens contact waste haulers when they do not know how to dispose of something.

The consortium reviewed a packet of information on green landscaping practices and agreed this was useful information to put in the best practices guide. The information was sponsored by the Drain Commissioner, and they should be contacted to receive more information to put in The Guide.

5. Local Community Updates

Washtenaw County

A solid waste intern is currently working on an environmental education program for county schools.

The County is attempting to receive a grant from the DEQ for disposing of chemicals from the chemistry labs and industrial arts program of local schools. Krcmarik will discuss this matter with the superintendents of the schools shortly.

In 2005, the County is sponsoring six regional clean up days, three in the spring and three in the fall. These will be located all over the county to encourage proper household hazardous waste disposal. The collections will also accept items such as old furniture, tires, electronics and other larger materials. These collections are free, and open to county citizens only. Businesses are not permitted to discard of anything on these days. The clean up days are scheduled as follows:

- April 2 or 9 – to be decided
- April 23 – Webster Township Hall
- May 14 – Chelsea Fairgrounds
- August 20 – Lincoln School
- September 25 – Washtenaw County Farm Grounds

Washtenaw County has recently undergone a reorganization. Here is how the department positions will be set up.

Department head

- Development Services Director
 - PW Supervisor
 - Building Official
 - >Inspectors
 - >SESC Officers
 - Environmental Health/OW&S Team Supervisor
 - >Sanitarians
 - PH Engineer
- Environmental Services Director
 - Environmental Health/Urban Team Supervisor
 - >Sanitarians
 - >Environmental Technicians Assistant
 - Environmental Supervisor
 - >SW Coordinator
 - >Environmental Education
 - >Data Specialists
- Planning Services Director
 - Planning Supervisor
 - >Planners
 - Economic Development/Brownfield Planner
 - HDC Planner

For information on the Jail Millage, please visit the County website at www.ewashtenaw.org

Sylvan Township/Western Washtenaw Recycling Authority

The WWRA has met with engineering consultants to upgrade their MRF in order to increase its capacity. With this expansion, they intend to bring in other townships that currently do not recycle.

The Ypsilanti Food Co-Op received a \$6000 solar grant from the University to install several solar panels on their facility.

York Township

York Township will suspend their recycling program until the township's budget allows it to restart.

6. New Topics of Discussion

WCCSWM Chair Nominations

Next month members will be able to nominate a consortium member to replace Nancy Stone as chair. This position will only be held for one year because terms last for two years beginning every even numbered year.

6. Adjourn

Simmons adjourned the meeting at 6:53 pm.

Month/Date	Topic	Location
March 24		Ypsilanti drop-off station
April 21	Waste Knot Ceremony	Cobblestone Farms

Future Suggestions: Milan Senior Center, Mallet Creek Library

Legislative Update:

Liz Brater will come to the station for a taping at 9:45 Monday 2-14-05, to talk about Solid Waste (e.g. her proposed bills to ban hazardous substances from the waste stream, and to add a \$6 ton surcharge to tipping fees).

Brater has recently introduced two bills to amend 1994 PA 451 (the "Natural resources and environmental protection act"):

1. SENATE BILL 123—On February 1, 2005, Introduced by Senators BRATER, BIRKHOLZ, PRUSI, CHERRY, OLSHOVE, THOMAS, BASHAM, SCHAUER, JACOBS, SCOTT, SWITALSKI, CLARKE, GEORGE, VAN WOERKOM, PATTERSON, ALLEN, HARDIMAN, JELINEK, McMANUS and TOY:

To ban the sale (starting 2006) or the use (starting 2010) of mercury containing blood pressure measuring devices.

2. SENATE BILL NO. 158—February 3, 2005, Introduced by Senators BRATER, BASHAM, JACOBS, PATTERSON, CHERRY and SCHAUER and referred to the Committee on Natural Resources and Environmental Affairs: A ban from incineration or landfilling of--
 - fluorescent lightbulbs
 - cathode ray tubes
 - the following batteries
 - a. alkaline manganese
 - b. lead acid
 - c. mercuric oxide
 - d. nickel cadmium
 - e. zinc carbon
 - f. lithium
 - g. silver oxide cell battery

- h. zinc air battery
- mercury-added products including:
 - a. thermostats or thermometers
 - b. electrical or other switches
 - c. lamps
 - d. novelties such as toys, candles, jewelry, holiday decorations, etc.

Note: My supervisor Jeff Kcmarik says that all of the above are “recoverable,” and that there are markets for the hazardous materials they contain.

Chances of passage: Both these bills have been referred to the Committee on Natural Resources and Environmental Affairs (see below), of which Brater is the Minority Vice Chair. Notice that with only 5 member of the Committee, Brater has the co-sponsorship of the Majority Vice Chair (Patterson) on both her bills, and the chair (Birkholz) on the bill to ban mercury in blood pressure measuring devices. She also has her fellow Democrat Basham as co-sponsor of both.

[Natural Resources & Environmental Affairs:](#)

Committee Roster:

Republicans: (3)

- [Patricia Birkholz \(MI-24th\)](#)
Chair
- [Bruce Patterson \(MI-7th\)](#)
Majority Vice Chair
- [Gerald Van Woerkom \(MI-34th\)](#)

Democrats: (2)

- [Liz Brater \(MI-18th\)](#)
Minority Vice Chair
- [Raymond Basham \(MI-8th\)](#)

Questions about her proposed bills that come to mind (I have contacted Brater’s aide but haven’t heard back yet):

How will they be enforced? (Since households won't be policed, how do you inspect loads of trash for the banned substances—who does it, and at what point in the process? Will money be appropriated for the increased responsibilities on inspectors? What will be the penalties?)

If it will rely heavily on voluntary participation (due to the difficulties in enforcement), whose responsibility will it be to educate the public?

What is the timetable of Bill #158? Will sufficient recycling opportunities be in place first?

According to the Mercury Policy Project <http://www.mercurypolicy.org/blog.shtml>), manufacturers have not factored in the costs and impacts of mercury-added products on fish, wildlife, the environment, and people during breakage or disposal. Although no one knows the

true price or degree of mercury pollution, **the rate in the U.S. has resulted in fish consumption advisories for mercury in 40 states. Mercury levels have increased 3-fold over the last century, with mercury concentrations in fish increasing at an average rate of 5% per year since 1970.** More than half of the mercury disposed annually into municipal solid waste nationally could be eliminated by phasing out the manufacture of non-essential mercury-added products.

Although some alternative products may initially cost more, many eventually pay for themselves. For instance, the digital thermostats can be set to maintain the home at certain temperatures depending on the time of day, which lowers heating and cooling costs.

Notes: Batteries will remain the largest source of mercury in Municipal Solid Waste until 2000, but mercury in discards will nearly be eliminated by 2005 due to state laws and the 1996 federal law banning the sale of most mercury-added batteries. Recycling rates for fluorescent lamps are approximately 10% in the U.S. compared with between 50%-70% in most European countries due, in part, to active manufacture support.

Surcharge Proposal:

On February 10th Brater issued a press release announcing the proposal of legislation to create a \$6 per ton surcharge for waste disposal in Michigan landfills, in an effort to encourage recycling and reduce out-of-state waste. She says the surcharge will raise about \$100 million per year, which will be returned to municipalities for new or existing recycling programs and “other environmental and local needs.” Michigan’s recycling rate is last among Midwestern states with just 20 percent of its waste being recycled.

25% of Brater’s proposed surcharge will be paid by out of state waste. This is because only 75% of the waste in Michigan landfills is generated here. This is compared to 1996, when 87% of our waste was our own. In the 7 years from 1996 to 2003, the percentage of Canadian trash in our landfills more than doubled, from 6.2% to 15.1%. We are the nation’s third largest importer of trash.

Brater says her proposed surcharge will bring the cost of landfilling in Michigan more in line with other states and make Michigan landfills less of a magnet to out of state waste.

For instance, last fall the City of Toronto admitted that they have always had alternative agreements with other landfills to dispose of their trash. But Toronto has never been forced to switch their trash disposal to these non-Michigan landfills.

Note that Michigan does export hazardous waste to Canada (28,000 tons of it in 2003, according to the DEQ). But this number is compared to the over **9.4 million** cubic yards of waste Michigan received from Canada in 2003.

Legislation in Senate Committee - February 7- 11, 2005

Senate Natural Resources & Environmental Affairs

SB 28 (Senator Michael Switalski-D District 10) This legislation redefines beverages for the purpose of expanding the bottle deposit law in Michigan to include non-carbonated water beverages and all other non-carbonated drinks intended for human consumption except for unflavored rice milk, unflavored soymilk or a dairy-derived product.

This legislation would also define "beverage container" as an airtight metal, glass, paper, or plastic container, or a container composed of a combination of those materials, that, at the time of sale, contained one gallon or less of any of the following:

- A soft drink, soda water, carbonated natural or mineral water, or other nonalcohol
 - A beer, ale, or other malt drink of whatever alcoholic content.
 - A mixed wine drink or a mixed spirit drink.

SB 79 (Senator Michelle McManus-R District 35) This bill would provide that a county or agency shall not impose a surcharge or fee for a household waste reduction program without the approval of the voters within the county at a regularly scheduled election.

SB 158 (Senator Liz Brater-D District 18) This legislation would prohibit the disposal of batteries, fluorescent light bulbs, electronic equipment containing cathode ray tubes, and any mercury-added products in landfills and municipal solid waste incinerators.

Senate Committee on Finance

SB 64 (Senator Ron Jelinek-R District 21) This bill would create a new public act titled, the Michigan Shopping Bag Tax Act. This legislation would collect from every retailer 2 cents per non-biodegradable shopping bag that retailer. The monies collected would be deposited into the general fund and used for only two purposes. The money would be for states' public school operations and for regional recycling of

Legislation in House Committee- February 7- 11, 2005

House Committee on Natural Resources, Great Lakes, Land Use, and Environment

HB 4094 (Representative Fred Miller-D District 31) This bill would require all buildings owned or operated by a state agency that are open to the public, to provide for the recycling of glass, plastic and aluminum beverage containers.

HB 4095 (Representative Fred Miller-D District 31) This bill would require any state agency that has an event open to the public at which beverages are provided shall have containers for those beverages to be recycled. The legislation also provides that the state agency shall make reasonable efforts to transfer those beverage containers to the appropriate recycling facility.

HB 4155 (Representative Chris Kolb-D District 53) This legislation would prohibit a person or an owner of a municipal solid waste incinerator from disposing of a cathode ray tube (including TV's & computer monitors) in a municipal solid waste incinerator.

HB 4156 (Representative Chris Kolb-D District 53) This legislation would prohibit a person from knowingly disposing of (or permitting disposal of) a cathode ray tube (including a television or computer monitor containing a cathode ray tube) in a landfill. The bill also specifies that the Department of Environmental Quality would have to convene a task force made up of representatives of manufacturers of electronic equipment, environmental organizations, retail businesses that handle electronic equipment, members of the general public, and other interested people. Finally, the members of the taskforce would have to provide the legislature with a report on the adequacy of regulatory programs related to the disposal of electronic waste, and in particular electronic waste containing cathode ray tubes.