

Suburban Infill Development

Description: Inventory, assessment and recommended actions for residential infill in Suburban Landscape areas.

Partners: Washtenaw County Planning and Environment and Local Units of Government

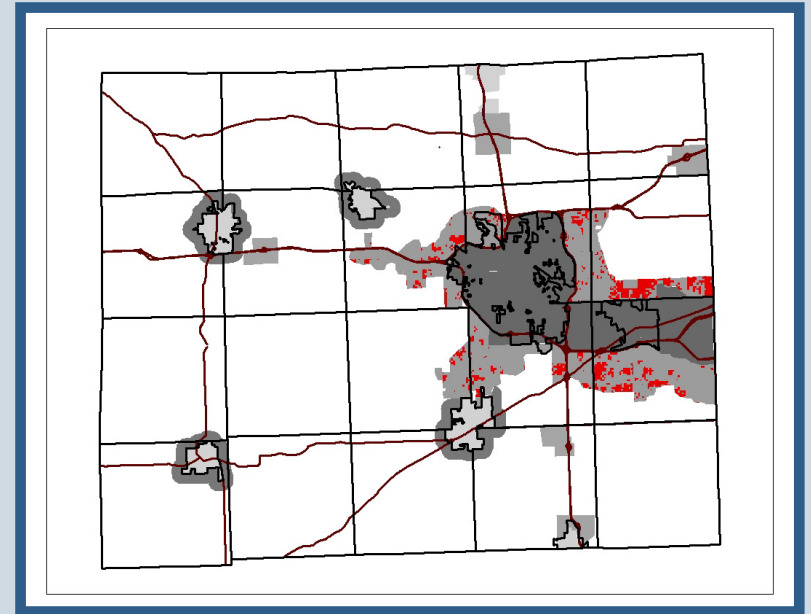
Status: Start Spring 2005

Comprehensive Plan Reference

Landscapes Objective 1

Promote higher density infill development and redevelopment within existing cities, suburban areas, and smaller cities and villages and areas surrounding them

Recommendation 1.4 - Encourage infill development in suburban areas to develop at higher densities (4 to 8 dwelling units per acre).



Contact Information

Amy Golke
222.3939

golkea@ewashtenaw.org