

Infill Development

Description: Identifying and assessing redevelopment opportunities in the City of Ypsilanti to provide site specific redevelopment recommendations and packaging sites for marketing to developers

Partners: Washtenaw County Planning and Environment and the City of Ypsilanti

Status: Report and Action Plan Due March 2005

Comprehensive Plan Reference

Landscapes Objective 1

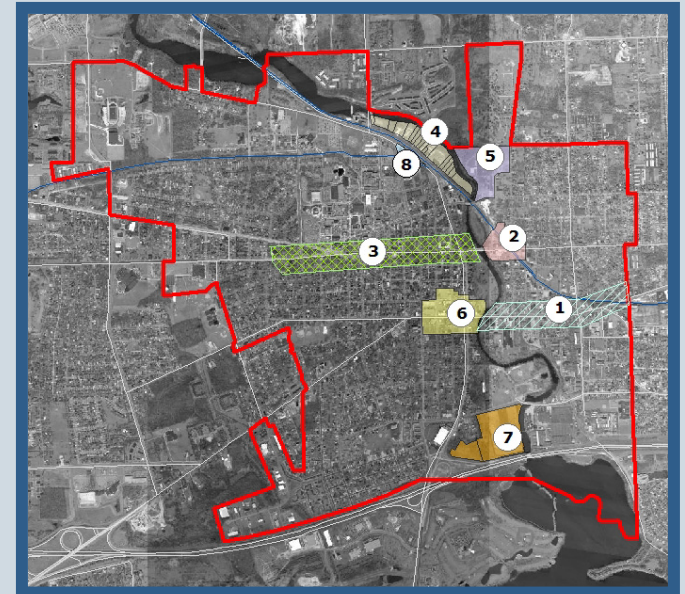
Promote higher density infill development and redevelopment within existing cities, suburban areas, and smaller cities and villages and areas surrounding them.

Recommendation 1.1 – Encourage infill development within urban centers, mixed-use developments and residential developments that provide a variety of housing options – single family, townhouses, apartments and condominiums.

Economic Development Objective 3

Develop an inventory of ready sites for expanding and new businesses.

Recommendation 3.1 - Develop an inventory of existing buildings and infill development sites and the renovation needed to make these sites suitable for target businesses. (Economic Development)



Contact Information

Jason Kaplan

734.222.6848

kaplanj@ewastenaw.org