

Washtenaw County
Parks and Recreation Commission
Master Plan 2010 - 2014



Agenda

- Introduction
- Master Plan – Description and Purpose
- Community Description
- Financial Summary
- Recreation Inventory
- Planning and Public Input Process
- Goals and Objectives
- **Action Program**
- Contact Information

Introduction



- County park system began in 1973
- Washtenaw County Parks and Recreation Commission (WCPARC) now owns or manages 1847 acres of parks
- has protected 1807 acres of valuable land through the Natural Areas Preservation Program (NAPP)
- Total managed 3654 acres

Washtenaw County Parks and Recreation Commission Mission Statement

“... to **enhance the quality of life** in the County by promoting a **healthy lifestyle**, efficiently providing **high quality facilities** and **programs** reflective of current and anticipated recreational needs of County residents and visitors – with particular emphasis on preserving **fragile lands, water quality, wildlife habitat, creating pedestrian and greenway connections**, and providing high quality services to those of **all backgrounds**”

Master Plan

- WCPARC prepares a **Master Plan every 5 years**
- Preparing a Master Plan involves **examining existing facilities, trends**, and projecting **future needs** of County residents
- The Master Plan outlines the major **Initiatives** and **Actions** that the Commission will undertake up to the end of 2014
- Completion of the plan is required to be eligible for state of Michigan grants for recreation projects

Community Description

- 20 townships; 720 square miles of area in southeast Michigan
- population in 2008 at 347,670
- WCPARC provides recreational facilities and programs at the **County level**, services not provided at local level (i.e., Ann Arbor or Dexter) nor provided by Regional (HCMA) or state of Michigan agencies (MDNR)

Role of WCPARC

- Community spaces in addition to recreation spaces
- Provide Green Initiatives (e.g., non-motorized transportation)
- Preserve critical ecological and wildlife habitat



- Counter inactivity trends in society
- Activities for youths and families
- Safe recreational environment for all ages

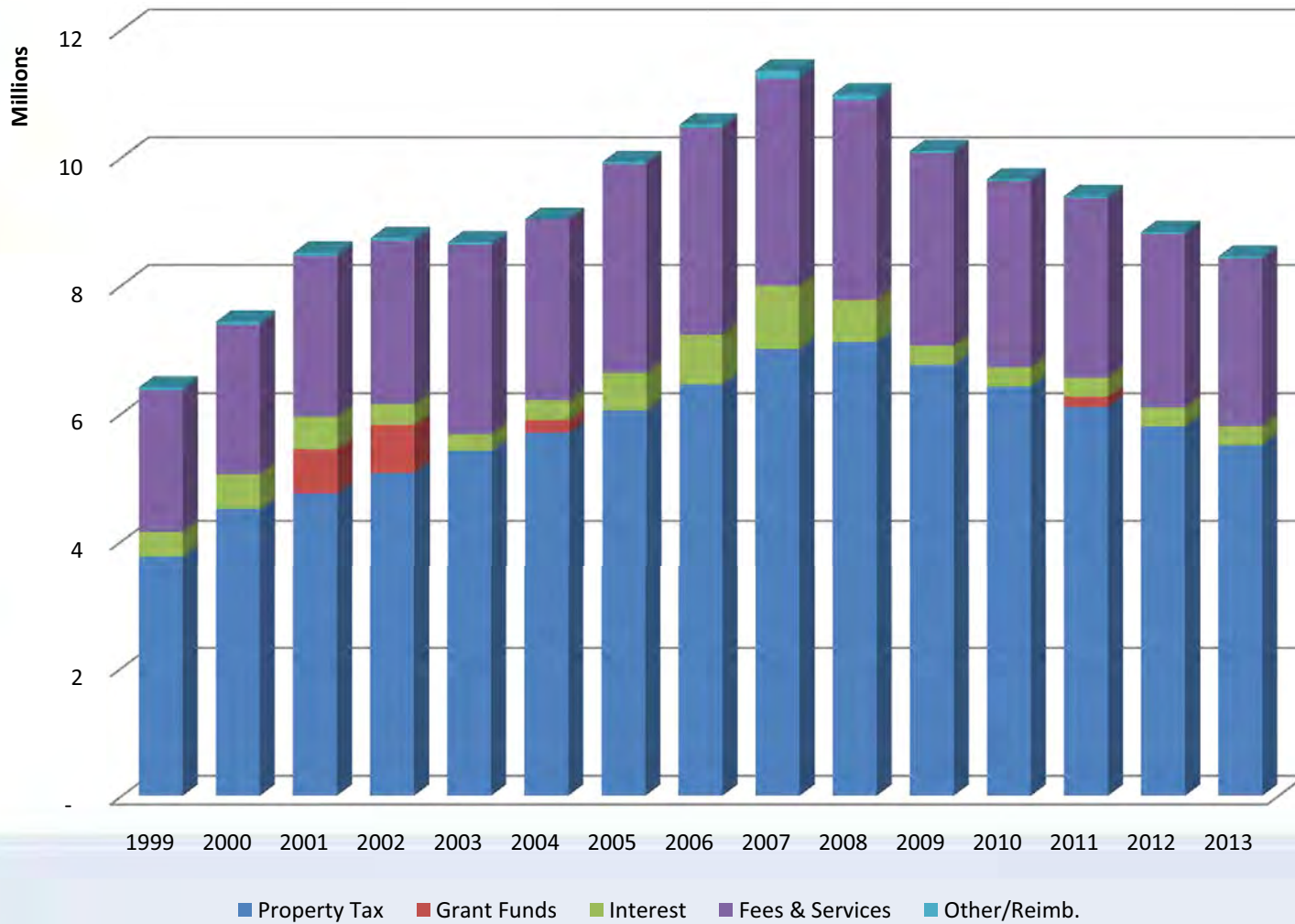


Financial Summary

Primary **Funding** Source for **Park - 2 millages**

- Each millage is 0.2367 (1/4 mill) levied countywide
- One millage: **Capital Improvements/Acquisition**
 Park Development
- Second millage: **Park Operations**
- Additional Funding
 Fees , federal and state **grants**, concessions, private donations

Washtenaw County Parks & Recreation Commission Revenue History & Projections 1999 - 2013



Financial Summary

Natural Areas Preservation Program

NAPP receives its **funding** through a **County millage** (1/4 mill) established through **Ordinance No. 128** governing the purchase of Natural Areas Land



Park and Preserves Facilities Map

Washtenaw County Parks & Recreation Commission Facilities Map

Prepared by:
Washtenaw County Parks & Recreation Commission
January 7, 2010

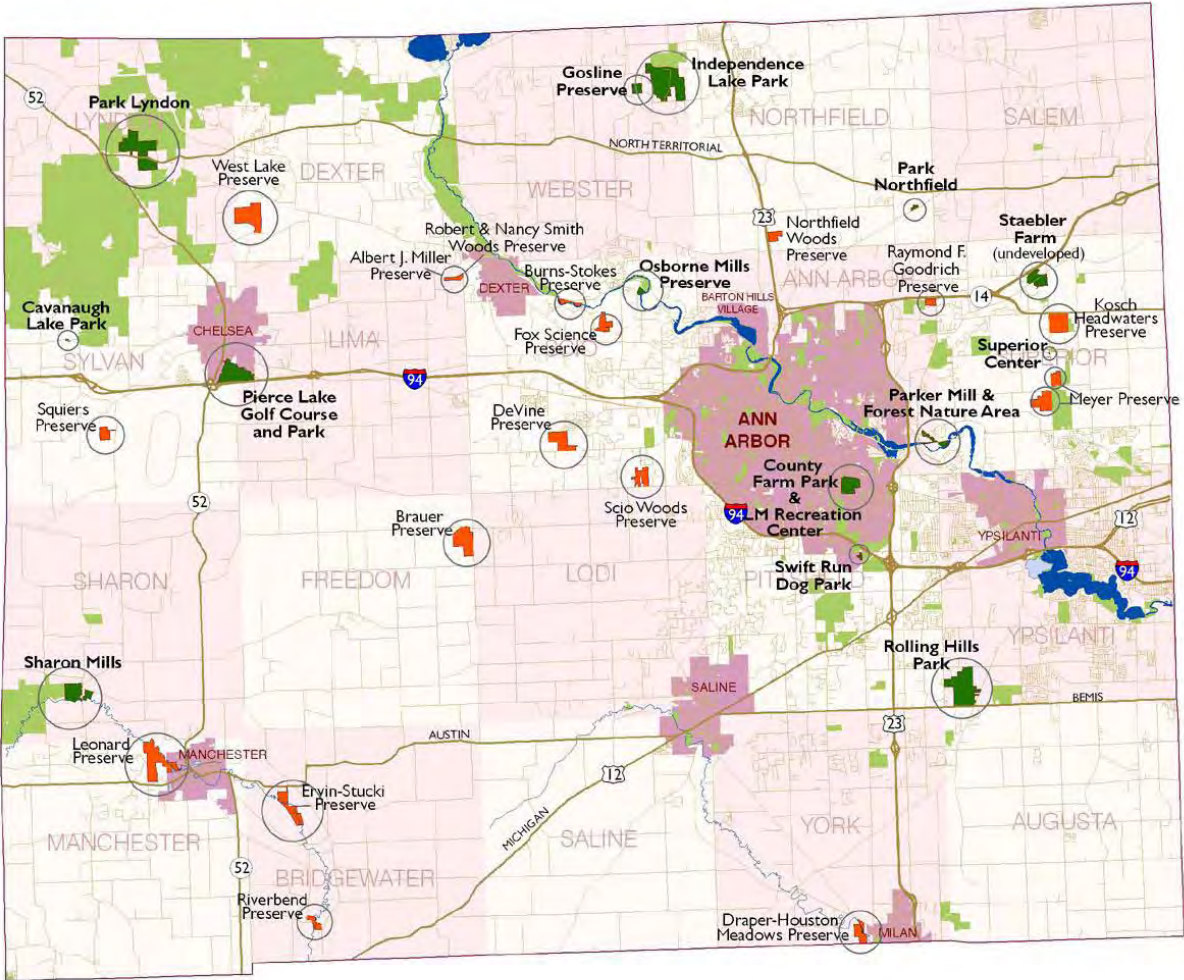
Data:
Washtenaw County GIS

Legend

-  County Park
-  County Preserve
Natural Areas Preservation
Program (NAPP)
-  Other Public Recreation &
Conservation Lands



(734) 971-6337
parks.ewashtenaw.org



Recreation Inventory

Existing Resources

- over **3600 acres** of **parks** and **preserves**: trails, rivers and lakes; diverse ecosystems; historic mills; a golf course; recreation center; spray park; and a family aquatic center
- Foundations of a **County-wide trail system**
- An array of **programs** for **all** ages, from toddlers to seniors



Existing Resources

- over 1800 acres of Natural Areas protected (NAPP)



Border to Border Trail



The **Border to Border (B2B)** trail

a multiagency, collaborative project to construct a multiuse trail traversing **Washtenaw County**, from Livingston Co. to Wayne Co. along the **Huron River**
(35 miles when completed)

Recreation Inventory - Connecting Communities

In 2009, the
“Connecting Communities”
initiative was established to
work in partnership with other
communities and organizations
to develop **local trails**
projects, **linking** to the
County trails system



Planning Development and Methods

Process to produce the Master Plan, including the Action Program

- Assessment of **trends** (national and state)
- Evaluation of the County's **physical characteristics**
- Evaluation of the County's **demographics** (population, social, and economic data), and existing and **projected** recreation **needs** and/or **opportunities**

Planning and Public Process Inventory

- **Literature** review
- **Survey** of Border to Border trail users
- **Meetings** with:
WCPARC staff and Commissioners
Community Residents and Businesses



Planning and Public Process Inventory

Planning Development and Methods

- Public presentations to the community
- A draft of the Master Plan and survey is available on the Parks and Recreation website:

parks.ewashtenaw.org

Public Presentations of the Master Plan

- January 26, 2010, at Washtenaw Community College
- February 3, 2010, at the Dexter Library
- March 9, 2010, at the Commission Office in Ann Arbor
- Additional on request

Goals and Objectives

Goals and Objectives are the end product of the Planning Process which considers:

Input Sessions

Existing Park Conditions

Demographics (Existing and Forecast)

Physical Characteristics

Human-made and Natural

Goals and Objectives

Data evaluated (partial list)

Cultural

- Population
- Persons per Square Mile
- Age Groups
- Disabled Population
- Income/Poverty
- Ethnicity

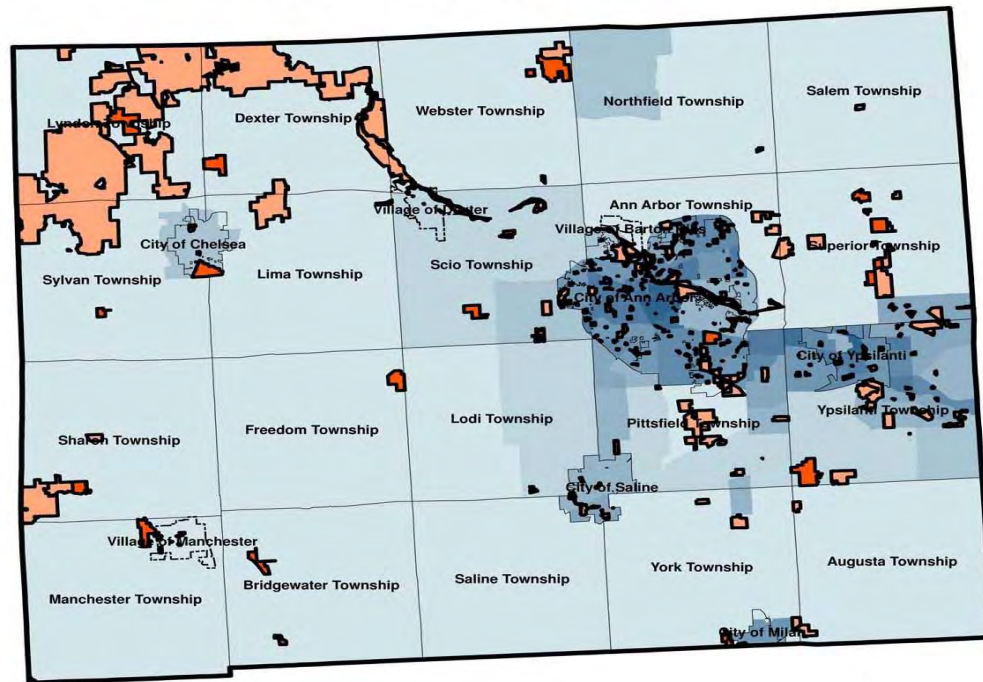
Biophysical

- Geology
- Hydrology
- Pre-Settlement Vegetation
- Land Use
- Transportation Network

All maps are contained in the draft Master Plan on the WCPARC website: parks.ewashtenaw.org

Persons Per Sq. Mile

Washtenaw County
Figure 3. Persons per Square Mile (2000)



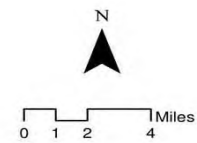
Key

- Other Park Facilities in County
- WCPARC Facilities

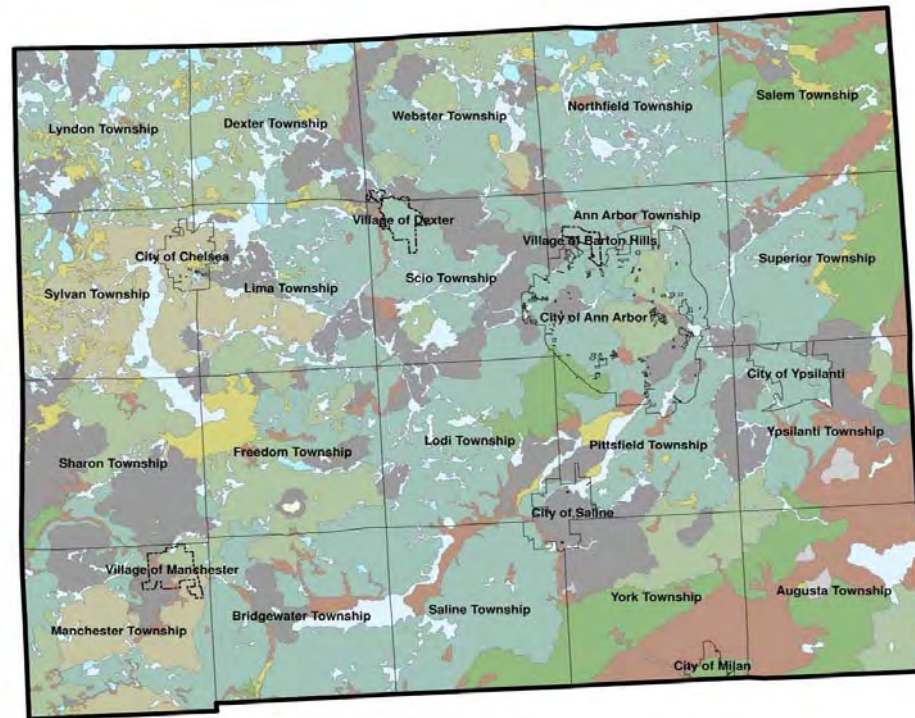
Persons per Square Mile (2000)

<ul style="list-style-type: none"> 0-87 87-184 184-339 339-707 707-959 	<ul style="list-style-type: none"> 959-1278 1278-1690 1690-2489 2489-3111 3111-7399
--	---

Source: U.S. Census Bureau



Pre-Settlement Vegetation

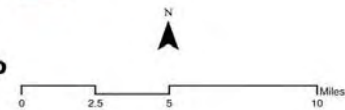


Key

BEECH-SUGAR MAPLE FOREST	LAKE/RIVER	MIXED OAK SAVANNA
BLACK ASH SWAMP	MIXED CONIFER SWAMP	OAK HICKORY FOREST
BLACK OAK BARREN	MIXED HARDWOOD SWAMP	SHRUB SWAMP/EMERGENT MARSH
GRASSLAND	MIXED OAK FOREST	WET PRAIRIE

Washtenaw County
Figure 19. Pre-Settlement Vegetation Map

Source: <http://www.mcgl.state.mi.us>



Goals and Objectives

Goal 1

Develop, operate and maintain a **comprehensive parks and recreation system** – comprised of parks, preserves and recreation facilities – designed to meet present and future **needs of all Washtenaw County residents.**

Each goal has **several Objectives** which are contained in the draft Master Plan on the WCPARC website:

parks.ewashtenaw.org

Goals 2 and 3

Goal 2

Preserve and enhance the existing **natural and cultural resources in Washtenaw County**, thereby providing opportunities for contact with the natural environment and promoting greater understanding of environmental issues.

Goal 3

Provide opportunities for a **variety of year-round recreation experiences**, both indoors and outdoors, that encourage participation by people of different ages, skill sets, and levels of ability.

Goals 4 and 5

Goal 4

Seek opportunities to **cooperate and collaborate** with other public and private **recreation providers**, ensuring the development, operation and maintenance of parks and facilities is accomplished with the greatest **cost efficiency**

Goal 5

Develop recreation facilities and programs that **promote a healthy, active lifestyle** for Washtenaw County residents of all abilities regardless of socioeconomic status

Goal 6

Goal 6

Maintain and advance public recognition of the role of the Washtenaw County Parks and Recreation Commission as the primary provider of **county-wide recreation services** in the community.

In order to **implement** the **Goals and Objectives**, it is necessary to determine the **actions** needed to bring the ideas to fruition. The **concrete steps** to be taken are called an:

Action Program