



Chapter 2: Community Background



2.1 Washtenaw County Background

Washtenaw County is located in southeastern Michigan, approximately 50 miles from the city of Detroit. The County is considered part of the Ann Arbor-Detroit-Pontiac metropolitan region and is bordered by Wayne County to the east, Livingston and Oakland Counties to the north, Jackson County to the west and Monroe and Lenawee Counties to the south. **Map 1 (page 27)** shows political boundaries within Washtenaw County.

The County covers roughly 720 square miles and is composed of a wide variety of landscapes, ecosystems and development. The population center of the County includes the City of Ann Arbor and the City of Ypsilanti. There are several other smaller population centers, namely Chelsea, Manchester, Saline and Milan in addition to the townships that are adjacent to Ann Arbor and Ypsilanti.

Washtenaw County is growing, and has experienced significant amounts of population growth and urban expansion during the past 20 years. Urban development has been most prevalent in the townships immediately adjacent to Ann Arbor and Ypsilanti. In the last 10 years however, the villages of Chelsea, Dexter and Manchester have experienced large population increases as well as increases in new development. These traditionally rural villages and townships are under development pressure, which is not projected to abate for the foreseeable future. The largely undeveloped nature of the more rural areas of Washtenaw County offer vast greenfield development opportunities. Absent any significant farmland or open space conservation program, these areas will gradually be built out.

2.2 Parks and Recreation System

Recreational opportunities in Washtenaw County consist of different types of recreational spaces and facilities, provided by a host of different public and private agencies. Planning for recreation requires an understanding of the existing availability of such services and the respective roles and interrelationships among system providers.

2.3 Types of Recreation Areas

The National Recreation and Park Association (NRPA) has established a recommended standard of 6.25-10 acres of developed parkland per 1,000 residents of any community. These parklands are classified into five categories:

- Mini-park
- Neighborhood Park/Playground
- Community Park
- Regional Parks
- Unique/Individual Features

Mini-Park

A mini park serves a radius of $\frac{1}{4}$ mile and is usually less than an acre in size. These “pocket parks” typically serve high density residential areas. Sometimes called “tot lots” these parks often provide recreation for a specific demographic group, usually seniors or children. The NRPA standard recommends between $\frac{1}{4}$ and $\frac{1}{2}$ an acre of mini-parks per 1,000 residents.

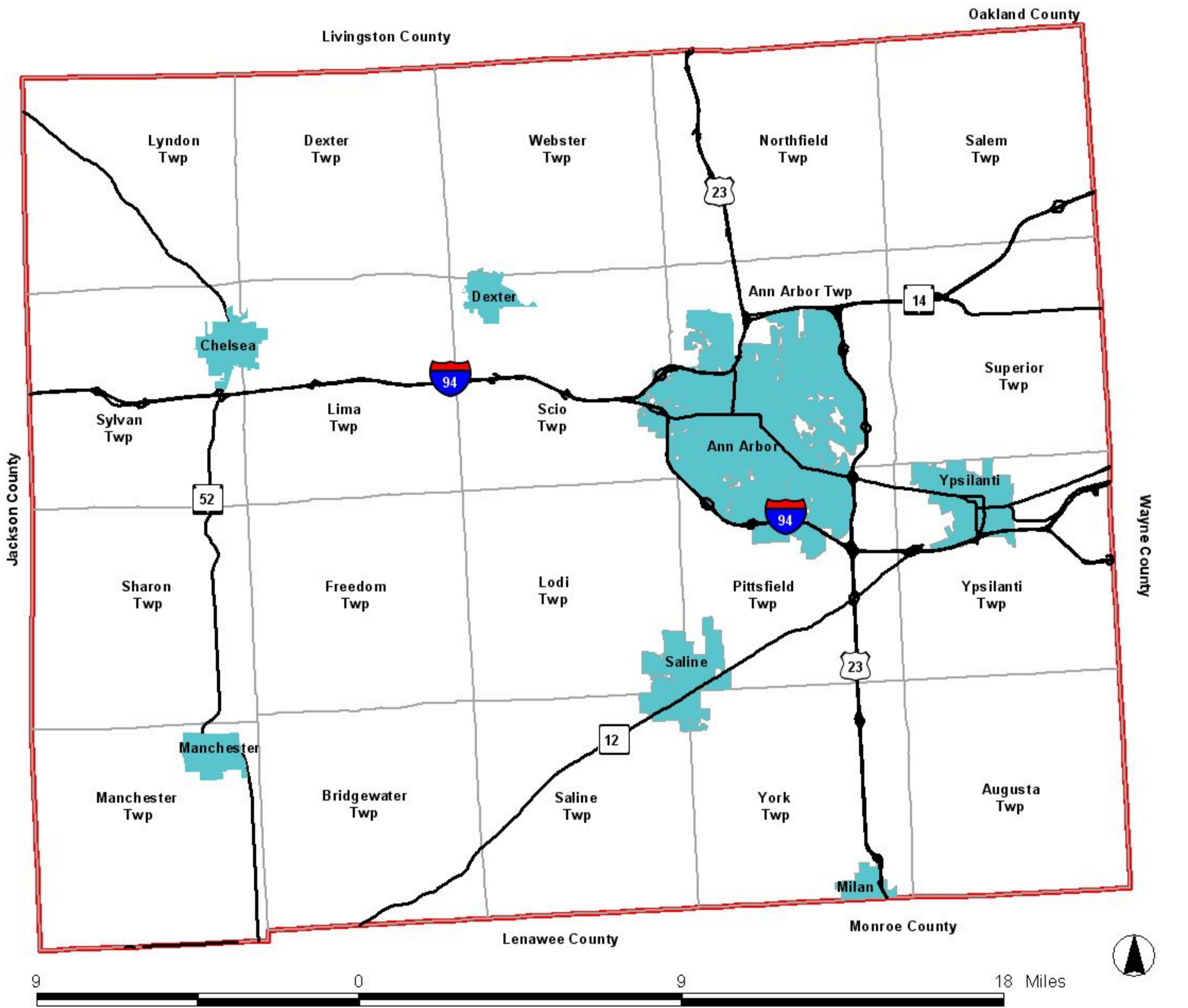
Neighborhood Park/Playground

This more specialized park is typified by more intense recreational development. These parks serve an area with a radius of between $\frac{1}{4}$ and $\frac{1}{2}$ mile, which roughly corresponds to a typical neighborhood of 5,000 residents or less. Typically neighborhood parks have either field or court games and playground equipment. Neighborhood parks are larger than mini-parks, ranging in size from 15-25 acres. Public elementary or middle school facilities may serve as neighborhood parks.

Community Park

Community parks are designed to attract users from across several neighborhoods within a 1-2 mile radius. These facilities are large - 25 acres or more - in size. These parks can be either intensely developed parkland with specialized athletic facilities, such as a swimming pool, or lesser developed parkland or natural areas with a variety of passive recreational opportunities. The NRPA guideline is 5-8 acres of community parkland for every 1,000 residents.

**MAP 1
MUNICIPAL BOUNDARIES
WASHTENAW COUNTY, MI**



Washtenaw County
Parks & Recreation
Commission



Map created by:



Regional Park/Preserve

Regional parks draw users from across a wide area - as far away as an hour's hour drive. These facilities are very large, typically at least 200 acres for a metropolitan regional park and 1,000 acres or more for a large natural area. In the case of the metropolitan regional park, these areas are characterized by scenic quality and the diversity of recreation opportunities. These facilities usually do not include ball fields and court games, however they may. Regional parks and preserve areas are largely devoted to natural resource conservation, and focus on more passive recreational activities such as camping, hiking, boating and bird watching. The NRPA standard is 5-10 acres of regional parkland for every 1,000 residents.

Unique Local or Regional Parkland

Linear parks, greenways, special use areas and special conservancy protected lands are considered to be unique local features. The most prominent of these - the linear park or greenway, provides non-motorized transportation links and may often connect different types of public spaces. The NRPA has no designated standard for the required amount of greenway/trail space for each community.

2.4 Recreation Providers

Parks and recreation services can best be provided through a system in which government at all levels, as well as quasi-public and private organizations, combine to provide needed services. Many agencies and private concerns plan and

Table 1: Publically-Administered Recreation Land in Washtenaw County.

Agency	Total Acreage	% of Total
WCPRC	1,378	5.9%
Local Municipalities	4,557	19.7%
Huron Clinton Metropolitan Authority (HCMA)	1,538	6.6%
State of Michigan	15,733	67.8%
TOTAL	23,206	100%

provide parks and recreation opportunities in the County. Public recreation lands and programs within the County are operated by four governmental levels: state, region, county and local. Specific agencies planning recreation in the County are: The Michigan Department of Natural Resources (MDNR), Division of Parks and Recreation, Waterways, Forestry, Fisheries, Wildlife; Huron-Clinton Metropolitan Authority; the Washtenaw County Parks and Recreation Commission (WCPRC); local municipalities; school districts; universities and community colleges. Planning for recreation services must therefore consider the respective roles and the interrelationships among providers. The different agencies and total parkland acreages are summarized in **Table 1** on the previous page.

State-owned Park and Recreation Land

State government has responsibilities in numerous program areas. The state acquires and develops land in southeast Michigan for large scale or special park and recreation areas, water access and boating sites. Selected sites near and within urban areas should be provided to conserve unique natural resources close to urban residents. State recreational areas should provide extensive natural areas, where development and use are minor, as a public trust for their aesthetic, scenic, and open space values, and as buffers for their intensive recreational facilities.

Table 2: State of Michigan Management Areas (Washtenaw County)

Name	Total Acres	Washtenaw Acres
Pinckney Recreation Area	10,815	7,361
Waterloo Recreation Area	19,839	6,695
Sharonville Game Area	3,015	645
Chelsea Game Area	654	654
Gregory Game Area	3,400	126
Little Goose Lake Game Area	202	202
Water Access Sites		50
TOTAL	37,925	15,733

The State of Michigan owns and operates 15,733 acres of recreational land in Washtenaw County (see **Table 2**, previous page), the most operated by a single agency or entity. The Michigan Department of Natural Resources (MDNR) operates 14 state parks in southeast Michigan, seven located totally or partially within Washtenaw County. These include the Pinckney and Waterloo State Recreation areas. Furthermore, MDNR also operates the Chelsea, Gregory, Little Goose Lake, and Sharon Game Management areas. Most of these areas are undeveloped and provide wildlife habitat, hunting access, passive recreation and nature study. Approximately 1,200 acres are developed for intensive recreation.

County Parks

County government has a responsibility to provide those types of recreational facilities and programs that cannot be adequately developed at the local level. Since County facilities supplement local facilities, they should be readily accessible to population concentrations. The County should cooperate with other levels of government to protect open space and natural areas threatened by urban sprawl and provide recreational facilities and programs for use on an inter-community basis. A

Table 3: Washtenaw County Park and Recreation Commission Facilities.

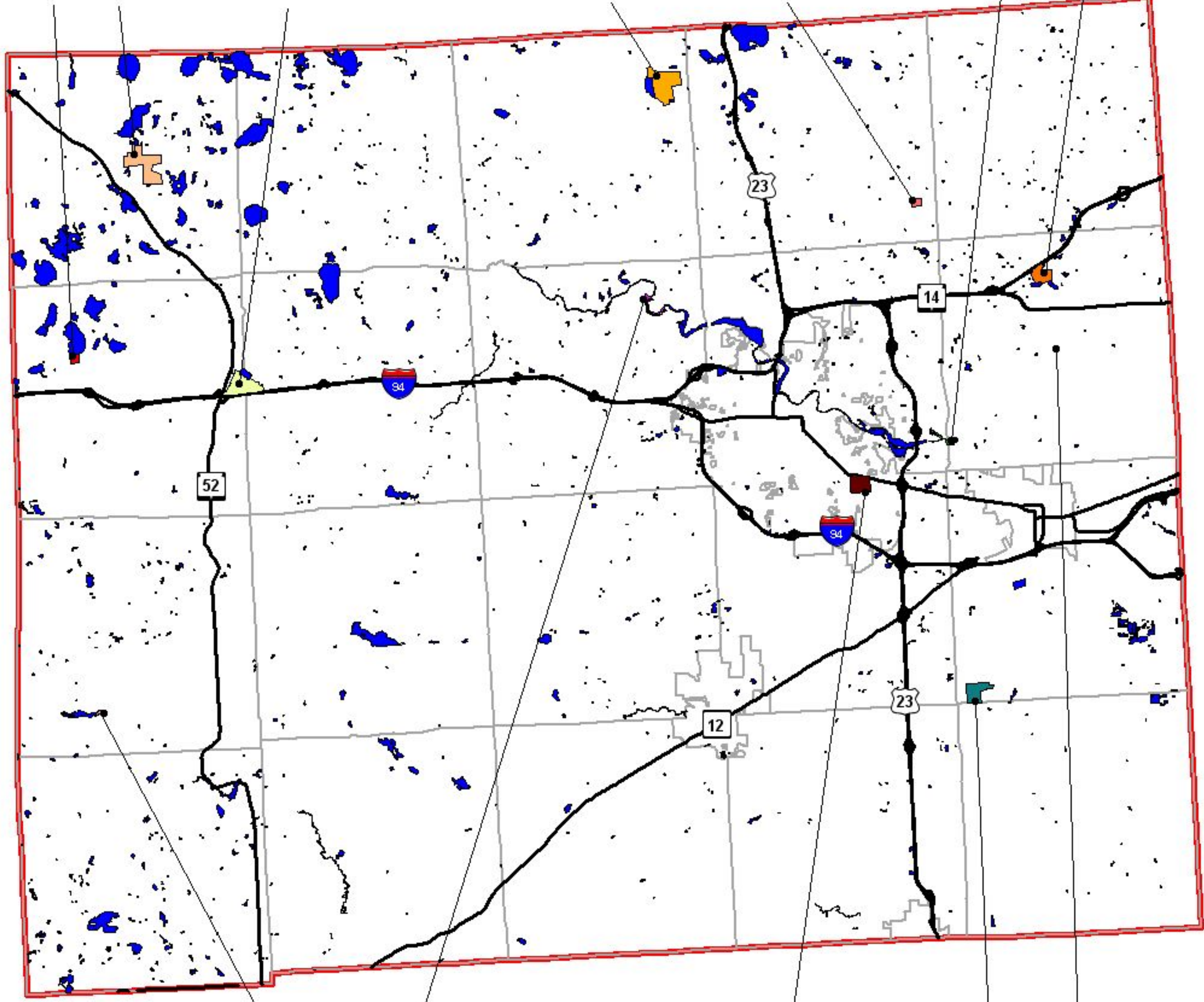
Park	Location	Acres	Amenities
County Farm Park	City of Ann Arbor	127	Commission and administrative offices, nature trails, fitness course, picnic shelters, community gardens, rest rooms, equipment storage barn.
Cavanaugh Lake Park	Sylvan Township	3	Roadside park with toilets, and open field; swing set and small play structure; picnic shelter; grills; lake view, no boat access or swimming.
Independence Lake	Webster Township	312	Private group rental pavilion, playfield and beach; sandy beach/swimming area; spray zone water feature; paved multi-use trail; nature trails; picnic shelters; play structures; boat rentals; small boat access, fishing dock; rest rooms; office & maintenance buildings.

Table 3 (continued): Washtenaw County Park and Recreation Commission Facilities.

Park	Location	Acres	Amenities
Meri Lou Murray Recreation Center	City of Ann Arbor		Indoor pool, cardiovascular exercise room, indoor track, gymnasium, locker rooms
Park Lyndon	Lyndon Township	335	Nature trails, picnic shelters, restrooms, children's play equipment, trail cabin, observation decks
Park Northfield	Northfield Township	12	Picnic shelter, children's play equipment, restroom, open play area, nature trail
Parker Mill County Park	Ann Arbor and Superior Townships	26	Paved multi-use trail, nature trails, grist and cider mill, historic log cabin, picnic area, restrooms. Adjacent to Forest Park, which is operated by the Washtenaw County Parks and Recreation Commission on land leased from the City of Ann Arbor.
Pierce Lake Golf Course & Park	Chelsea	232	18 hole, par 72 championship golf course; 26 acre park; boardwalk with observation areas through wetlands around Pierce Lake; picnic shelter; grills; connection to Chelsea trail system; non-motorized boat launch.
Osborne Mill Park	Scio Township	39	Nature preserve area, nature trails
Rolling Hills County Pak	Ypsilanti Township	151	Water park with lazy river water ride, tube ride, water slides, spray play areas, a wading pool, sand play area and food concessions; picnic shelters; volleyball; paved-multi use trail; nature trails; cross-country skiing; sledding hill; fishing docks; 9-hole disc golf course; wetlands; restored prairie
Sharon Mills	Sharon Township	26	Historic mill, 3 buildings, indoor restrooms, picnic shelter, grills, cultural and environmental interpretive exhibits, canoe launch, outdoor staging area
Staebler Farm	Superior Township	114	Not open to public
Superior Center	Superior Township	1	Roadside park with picnic tables

Cavanaugh Lake Park Lyndon Pierce Lake Independence Lake Park Northfield Parker Mill Staebler Farms

MAP 2
WASHTENAW COUNTY
PARKS AND RECREATION
COMMISSION FACILITIES
WASHTENAW COUNTY, MI



Sharon Mills Osborne Mill County Farm & Murray Recreation Center Rolling Hills Superior Center



Washtenaw County
Parks & Recreation
Commission 

Map created by:
 **The Johnson Hill Land Ethics Studio**
MI 48106-1504 734.769.4100 www.jhlandethics.com

liaison function between other levels of government is also appropriate for the WCPRC.

Washtenaw County plays an important role in the delivery of recreation, parks and related services to enrich the quality of life of residents. Currently, County parkland represents a small, but particularly significant and growing, part of the regional parkland total. The Washtenaw County Parks and Recreation Commission owns and/or operates 13 facilities including one indoor recreation center, one golf course and 114 acres of active farmland in Superior Township. WCPRC lands total approximately 1,378 acres - which is roughly 6% of the publically-owned and administered parkland in Washtenaw County. Washtenaw County Park holdings are detailed in **Table 3** (page 31) and in **Map 2** (page 33).

Regional Parks

The Huron-Clinton Metroparks Authority (HCMA) operates 13 regional parks in the five-county southeastern Michigan region. Three facilities - Delhi Metropark, Dexter-Huron Metropark and Hudson Mills Metropark - are located in Washtenaw County. HCMA provides large-scale and special facilities to accommodate large numbers of users in well-defined and separated active and passive recreational activities. HCMA presently operates approximately 24,000 acres of land in its five-county district. Within Washtenaw County, the Authority manages one large and two small Metroparks on the Huron River totaling 1,797 acres: Hudson Mills (1,625 acres), Dexter-Huron (125 acres) and Delhi (47 acres).

Local Parks

In Michigan, municipalities traditionally have had primary responsibility for providing public recreation facilities for frequent, short term use by local residents. Urban areas, cities and towns have developed local parks and recreation commissions or departments that acquire land, build parks and administer programs and facilities. One consequence of this system is that many less affluent communities and sparsely-populated areas are unable to afford local staffing and lack the expertise to develop local park facilities. Another consequence of the system is that, as municipalities struggle financially, even the more heavily-populated urban areas are struggling to maintain existing parks and recreation facilities and programs.

The condition of the state's economy is forcing municipalities to explore potential intra-jurisdictional partnership opportunities. These partnership alternatives may allow municipalities to combine resources to better meet the needs of all local residents.

All cities and villages in Washtenaw County provide recreation facilities and services to some degree. Cities, villages and the more urbanized townships provide almost 4,557 acres of municipal parkland for their residents. Recreational resources utilized by these municipalities are typically drylands or river valley flood plains. Park areas have been developed for intensive uses associated with municipal parks and include such facilities as athletic fields and picnic grounds. Community park facilities are sometimes located on school district property since cooperation between the community and school district can provide for efficient use of land.

The City of Ann Arbor, with over 1,918 acres of parkland is, by far, the major local recreation provider within the County. Included in the 1,918 acres are two municipal golf courses and several areas for nature study and natural area preservation. Residents of outlying areas have long been dependent on the City for recreation services. This pattern has changed somewhat in recent years due to the increasingly active role the City of Ypsilanti, and Ypsilanti and Pittsfield Townships have taken in the provision of recreation services. The City of Ypsilanti has a total of about 84 acres of parkland, Pittsfield Township has 777 acres and Ypsilanti Township has 860 acres. The out-lying municipalities of Milan, Manchester, Chelsea, Dexter and Saline are also managing growing park systems ranging in size from 12 to 191 acres.

Park development in the other out-county areas has been slower. Park facilities range from small scale facilities developed as an incidental use of government land to full-scale community parks. In total, 14 of 28 local government units in the County operate park facilities. Local park facilities are detailed on the following pages and the ratio of residents to local parkland is detailed in **Table 4** (page 41-42).

2.5 Local Recreation Summary

Ann Arbor Township

No facilities

Augusta Township

No facilities

Bridgewater Township

No facilities

Dexter Township

No facilities

Freedom Township

No facilities

Lima Township

No facilities

Lodi Township

No facilities

Lyndon Township

No facilities

Manchester Township

No facilities

Northfield Township

- 1 Boat launch
- 1 Senior center
- Trail network (in development)

Pittsfield Township (777 acres)

- 1 baseball field
- 3 children’s playgrounds
- fishing dock
- 3 nature areas
- 3 picnic areas
- 3 picnic shelters
- 2 softball fields
- 2 soccer fields
- 3 T-ball fields
- 4 tennis courts
- trails

Salem Township

No facilities

Saline Township

No facilities

Scio Township

No facilities

Sharon Township

No facilities

Superior Township (269 acres)

- 2 baseball fields
- 1 basketball court
- 3 community meeting rooms
- 8 nature areas
- 7 picnic areas
- 2 picnic shelters
- 4 playgrounds
- 1 tennis court
- trails

Sylvan Township

No facilities

Webster Township

soccer fields

York Township (150 acres)

nature area

picnic area

5 soccer fields

Ypsilanti Township (860 acres)

13 ball fields

6 basketball courts

1 batting cage

1 boat launch

6 fishing areas

3 fitness courses

1 golf course

3 horseshoe pits

15 picnic areas

14 picnic shelters

18 playgrounds

6 racquetball courts

3 soccer fields

16 tennis courts

4 volleyball courts

City of Ann Arbor (1,918 acres)

146 parks

82 baseball/softball fields

21 full basketball courts

11 half-size basketball courts

48 buildings

2 golf courses

hiking and nature trails

2 ice rinks

53 picnic areas

70 playground areas

4 swimming pools

63 tennis courts

City of Milan (194 acres)

bird sanctuary

1 baseball field

2 basketball courts

1 community/senior center building

1 community house meeting area

equestrian arena

horseshoe pits

model airplane flying field

3 picnic areas

2 picnic shelters

1 play field

2 playgrounds

3 soccer fields

4 softball fields

trails

volleyball court

City of Saline (191 acres)

4 baseball fields

3 basketball courts

1 basketball court

1 indoor recreation center

6 natural areas

8 picnic areas

3 picnic shelters

7 playgrounds

3 soccer fields

4 tennis courts

trails

1 volleyball court

City of Ypsilanti (84 acres)

Frog Island amphitheater

7 baseball/softball fields

3 basketball courts

community center/gymnasium

3 fishing piers

fitness area

3 football/soccer fields

horseshoe pit

9 picnic areas

8 playgrounds

senior center

9 shelter/restroom buildings

shuffleboard court

2 swimming pools - 1 indoor

6 tennis courts

3 tracks

volleyball court

weight room

Village of Barton Hills (33 acres)

3 natural areas

play field

tennis court

Village of Chelsea (12 acres)

1 picnic area

1 picnic shelter

2 playgrounds

2 softball fields

2 volleyball courts

Village of Dexter (25 acres)

1 basketball court

gazebo

nature trails

4 picnic areas

2 playgrounds

1 stage area/pavilion

Village of Manchester (44 acres)

3 baseball fields

2 basketball courts

1 football field

1 gazebo

2 ice rinks (outdoor)/skateboard area

7 picnic shelters

3 playgrounds

2 softball fields

2 tennis courts

trail

4 volleyball courts

Table 4: Projected Local Parkland Needs.

Municipality	2000 Population	Local Park acreage	Acres/1,000 residents	Projected 2030 population	Required Acres/1,000 residents (projected)
Ann Arbor City	108,109	1,918	17.7	116,270	116.3
Ann Arbor Township	4,058	0	0	5,112	51.1
Augusta Township	4,956	0	0	7,440	74.4
Barton Hills	306	33	10.8	390	3.9
Bridgewater Township	1,572	0	0	3,007	30.1
Chelsea	3,969	12	3.0	7,300	73.0
Dexter Township	5,164	0	0	6,029	60.2
Dexter Village	2,338	25	10.7	5,427	54.3
Freedom Township	1,526	0	0	2,169	21.7
Lima Township	2,593	0	0	4,359	43.6
Lodi Township	5,458	0	0	7,862	78.6
Lyndon Township	2,648	0	0	3,403	34.0
Manchester	1,972	44	22.3	3,741	37.4
Manchester Township	2,068	0	0	3,639	36.4
Milan*	4,775	194	40.6	7,042	70.4
Northfield Township	8,506	0	0	12,614	126.1
Pittsfield Township	29,072	777	26.7	63,764	637.6
Salem Township	6,146	0	0	11,388	113.9
Saline	7,897	191	24.2	10,176	101.8

* Includes portion in Monroe County

Table 4 (continued): Projected Local Parkland Needs.

Municipality	2000 Population	Local Park acreage	Acres/1,000 residents	Projected 2030 population	Required Acres/1,000 residents (projected)
Saline Township	1,377	0	0	2,451	24.5
Scio Township	14,052	0	0	23,164	231.6
Sharon Township	1,756	0	0	2,938	29.4
Superior Township	10,740	269	25.0	18,174	181.7
Sylvan Township	2,922	0	0	7,262	72.6
Webster Township	5,089	0	0	13,222	132.2
York Township	7,089	150	21.2	10,590	105.9
Ypsilanti City	22,472	84	3.7	22,110	221.1
Ypsilanti Township	49,099	860	17.5	70,141	701.4
Washtenaw County	316,040	4,557	13.9	448,020	4,480.2

Local Recreation Lands and Projected Needs

Table 4 (previous page and above) documents the amount of locally-owned and administered parkland in each municipality within Washtenaw County. For the purposes of this needs analysis, school facilities, county and state parks have not been included. Many municipalities utilize county or regional facilities for local recreation, however these facilities are not classified as local parks. Furthermore, the nature of state and regional parkland often does not fulfill local, “close to home” recreational needs such as playgrounds and ball fields. Additionally, mini-parks and neighborhood parks provide free recreation alternatives while State and HCMA parks require user fees. Therefore, the analysis illustrated in Table 4 has not included state, HCMA or WCPRC facilities.

While there is enough total local recreation land within the county, many residents do not have immediate access to local

recreation opportunities, as evidenced by the number of communities lacking any local parkland.

2.6 Other Recreation Providers

There are 11 public school districts, two state universities, and a community college in the county which own and manage a significant amount of open space, recreational lands and facilities. These include public school athletic areas, school nature preserves, university sports fields, golf courses and field research properties. Some properties, public school playgrounds for example, are readily available to neighboring residents during off hours; others, such as sports facilities at the universities, are reserved for members only. Still other university properties, like Saginaw Forest in Scio Township, are used by visitors for recreational purposes because of their trails, natural amenities and low intensity use.

Public University Land

The universities and colleges located in Washtenaw County provide recreation facilities totaling some 2,800 acres for the use and instruction of students. In addition, the universities manage botanical gardens and arboretums. The University of Michigan provides two golf courses, primarily for the use of their students and staff. The major portion of landholdings is reserved for scientific study and research by the respective institutions.

The institutional land provides a valuable addition to local park and recreation facilities.

Local Public School Facilities

School facilities also play an important role in providing local recreation opportunities. In many communities, schools provide all local recreation, particularly play areas. High schools also often serve as de facto regional recreational centers with active recreation facilities such as gyms, ball fields, pools and other specialized facilities. **Map 3** (page 47) details the location of school properties and individual schools within the County.

Relying on school districts for local recreation has drawbacks. One major consideration is that many school

facilities, gymnasiums in particular, are fully scheduled and utilized by the schools. In off-seasons, after school hours and during summer periods these facilities may be able to accommodate additional programming and use.

Other Public Land

Other publicly-funded institutions in the County own land that benefits the public only as a visual asset. This land is neither publicly-accessible nor available for recreational use. Approximately 1,500 acres fall into this category, the majority located in York Township at the Ypsilanti State Hospital and two state prison sites.

Private Facilities

Private lands comprise a large portion of the total recreation area in Washtenaw County and account for approximately 3,900 acres. Located primarily in outlying areas, country clubs, sports clubs, and camps are available to members of the community who belong to particular organizations, with membership fees a usual requirement.

2.7 Washtenaw County Schools

Washtenaw Intermediate School District

Ann Arbor Public Schools

- Huron High School
- Pioneer High School
- Community High School
- Project Education
- Roberto Clemente Student Development Center
- Clague Intermediate School
- Forsythe Intermediate School
- Scarlett Intermediate School
- Slauson Intermediate School
- Tappan Intermediate School
- Abbot Elementary
- Allen Elementary
- Angell Elementary
- Ann Arbor Open at Mack
- Bach Elementary
- Bryant Elementary
- Burns Park Elementary
- Carpenter Elementary
- Dicken Elementary
- Eberwhite Elementary
- Haisley Elementary
- King Elementary
- Lakewood Elementary
- Lawton Grades K-5
- Logan Elementary
- Mitchell Elementary
- Northside Elementary
- Pattengill Elementary
- Pittsfield Elementary

- Thurston Elementary
- Wines Elementary
- Ann Arbor Preschool & Family Center

Chelsea School District

- Chelsea High School
- Dwight E. Beach Middle School
- North Creek Elementary
- Pierce Lake Elementary
- South Meadow Elementary

Dexter Community Schools

- Dexter High School
- Mill Creek Middle School
- Creekside Intermediate School
- Wylie Elementary School
- Bates Elementary
- Cornerstone Elementary

Lincoln Consolidated Schools

- Lincoln High School
- Lincoln Middle School
- Bessie Hoffman Elementary
- Brick Elementary
- Model Elementary
- Redner Elementary
- Early Childhood Center

Manchester Community Schools

- Manchester High School
- Nellie Ackerson Middle School
- Luther C. Klager Elementary School

Milan Area Schools

- Milan High School
- Milan Middle School
- Paddock Elementary

Saline Area Schools

- Saline High School
- Saline Middle School
- Heritage School
- Woodland Meadows Elementary
- Pleasant Ridge Elementary
- Harvest Elementary
- Houghton Elementary

Whitmore Lake Public Schools

- Whitmore Lake High School
- Whitmore Lake Middle School
- Whitmore Lake Elementary

Willow Run Community Schools

- Willow Run High School
- Edmonson Middle School
- Cheney Academy of Math & Science
- Henry Ford Elementary
- Holmes Elementary
- Kaiser Elementary
- Kettering Elementary
- Thurston Early Childhood Development Center

Ypsilanti Public Schools

- New Directions Alternative Education
- Ypsilanti High School

- East Middle School
- West Middle School
- Regional Career Technical Center
- Adams Elementary
- Ardis Renaissance Academy
- Chapelle Elementary
- Erickson Elementary
- Eastbrook Elementary
- George Multiage Academy
- Perry Child Development Center

Public School Academies

- Central Academy
- Washtenaw Technical Middle College
- Ann Arbor Learning Community
- South Arbor Charter Academy
- New Beginnings Academy

Private and Parochial Schools

- Ann Arbor Academy
- Ann Arbor Adventist Elementary
- Ann Arbor Christian School
- Ann Arbor Hills Child Development Center
- Apostolic Christian Academy
- Calvary Christian Academy
- Center for Occupational & Personalized Education (COPE) Ann Arbor and Ypsilanti COPE Centers
- Clonlara School
- Daycroft Montessori (Grades 1-6)
- Daycroft Montessori (Pre-School-K)
- Emerson School
- Fr. Gabriel Richard High School
- Genesis Christian Academy

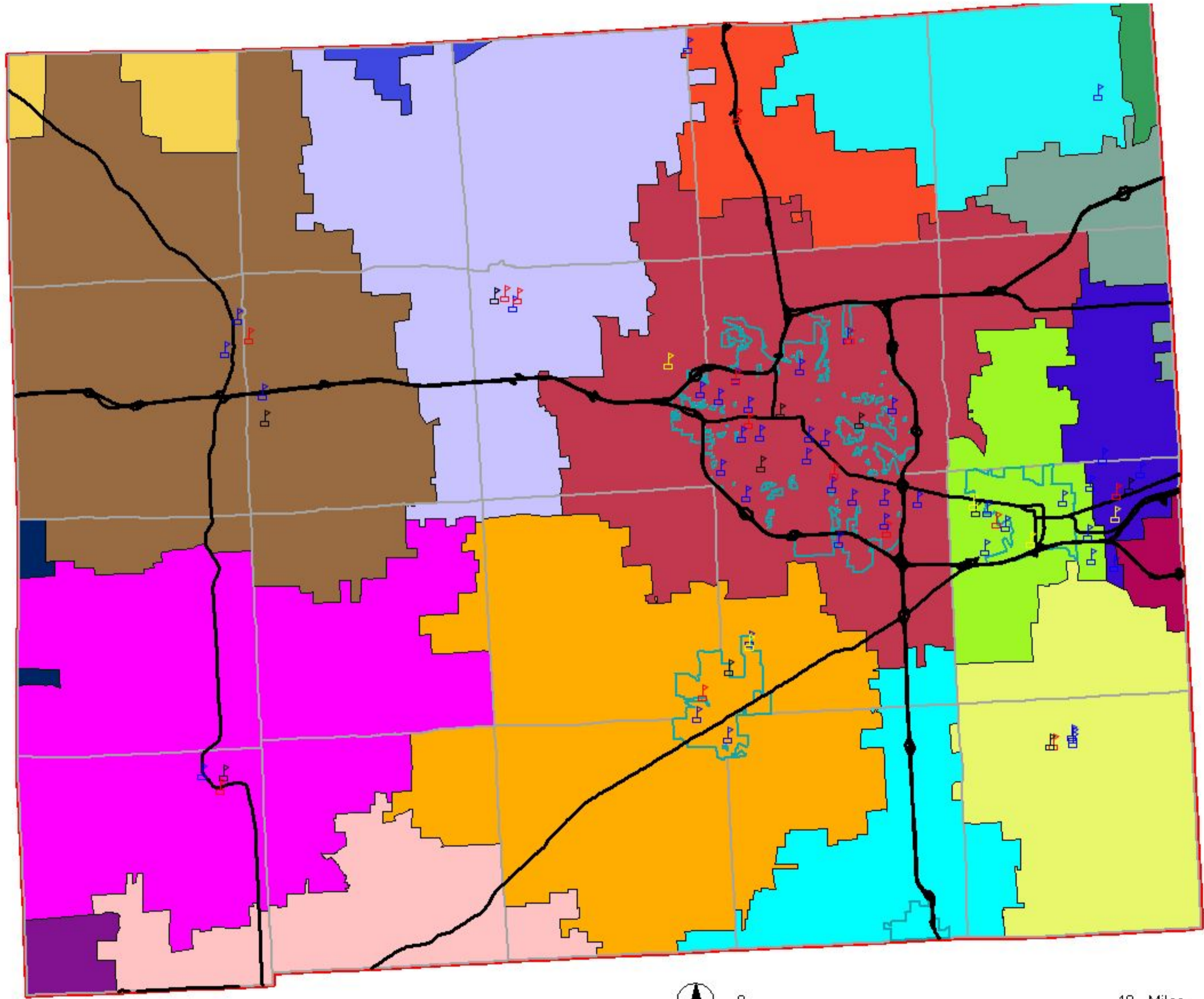
- Go Like the Wind
- Greenhills School
- Hebrew Day School
- High Scope Foundation
- Huron Valley Catholic School
- Michigan Islamic Academy
- Oak Trails School
- Rudolf Steiner School
- Rudolf Steiner High School
- Salem Lutheran School
- Spiritus Sanctus Academy
- St. Francis of Assisi Elementary & Middle School
- St. Paul Lutheran School
- St. Thomas School
- Summers-Knoll School

- North Sharon Christian School
- Washtenaw Christian Academy
- W.J. Maxley Training School

Post Secondary Schools

- Ave Maria College
- Cleary University
- Concordia University
- Eastern Michigan University
- University of Michigan
- Washtenaw Community College

MAP 3 SCHOOL DISTRICTS WASHTENAW COUNTY, MI



	City Boundaries
	Municipal Boundaries
School Districts	
	Ann Arbor Public Schools
	Chelsea School District
	Clinion Community Schools
	Columbia School District
	Dexter Community School District
	Grass Lake Community Schools
	Lincoln Cons. School District
	Manchester Community Schools
	Milan Area Schools
	Northville Public Schools
	Pinckney Community Schools
	Plymouth-Canton Community Schs.
	Saline Area Schools
	School District of Ypsilanti
	South Lyon Community Schools
	Stockbridge Community Schools
	Van Buren Public Schools
	Wilmore Lake Public Schools
	Willow Run Community Schools
Schools	
	Elementary
	High School
	Middle School
	Special School



Washtenaw County
Parks & Recreation
Commission 

Map created by:
 **The Johnson Hill Land Ethics Studio**
170 East Washtenaw Street • Ann Arbor, Michigan 48104
E: 248.960.2416 • F: 248.960.2425 • www.jhlsstudio.com