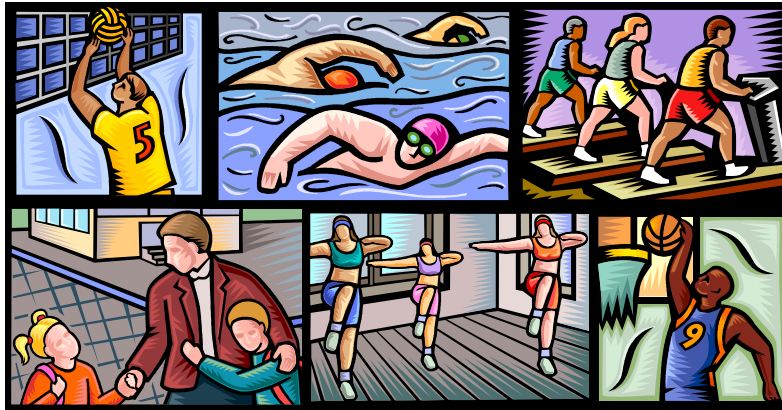


Washtenaw Gives

All
Donations
Go to the
American
Red
Cross
Disaster
Relief!



Special
Event shirt
available!
\$10 each
All proceeds go to
the American Red
Cross Disaster
Relief.

Put Your Donation to Action

What: A charity event providing open recreation facilities and a volleyball tournament.

When: Saturday, November 5, 2005 from 7pm to 10pm.

Where: Meri Lou Murray Recreation Center, 2960 Washtenaw Ave. (Washtenaw & Platt) Ann Arbor.

Who: Sponsored by Washtenaw County Parks & Recreation Commission, Washtenaw County Public Health, M-Fit, and the American Red Cross.

Cost: \$5 minimum per person at the door or \$60 pre-registration per volleyball team (teams must register by October 28th, contact Charles at wilsonc@ewashtenaw.org or 734.544.2981).

Planned Events:

- **7:05** Volleyball Tournament begins
- **7:15-8:45** Pilates/cardio work-out
- **7:30-8:30** Fun & Games: basketball clinic, circuit & relay races (5-12 year olds)
- **8:30-9:30** Hoop Shoot (13-17year olds)

Open Activities from 7-10pm:

- **Open Swim**
- **Weight room**
- **Cardio room**
- **Ping pong**
- **Walking track**

Anyone under 18 years old must be accompanied by an adult.

The American Red Cross name is used with its permission, which in no way constitutes as endorsement, express or implied, of Washtenaw County, its owners or employees.

