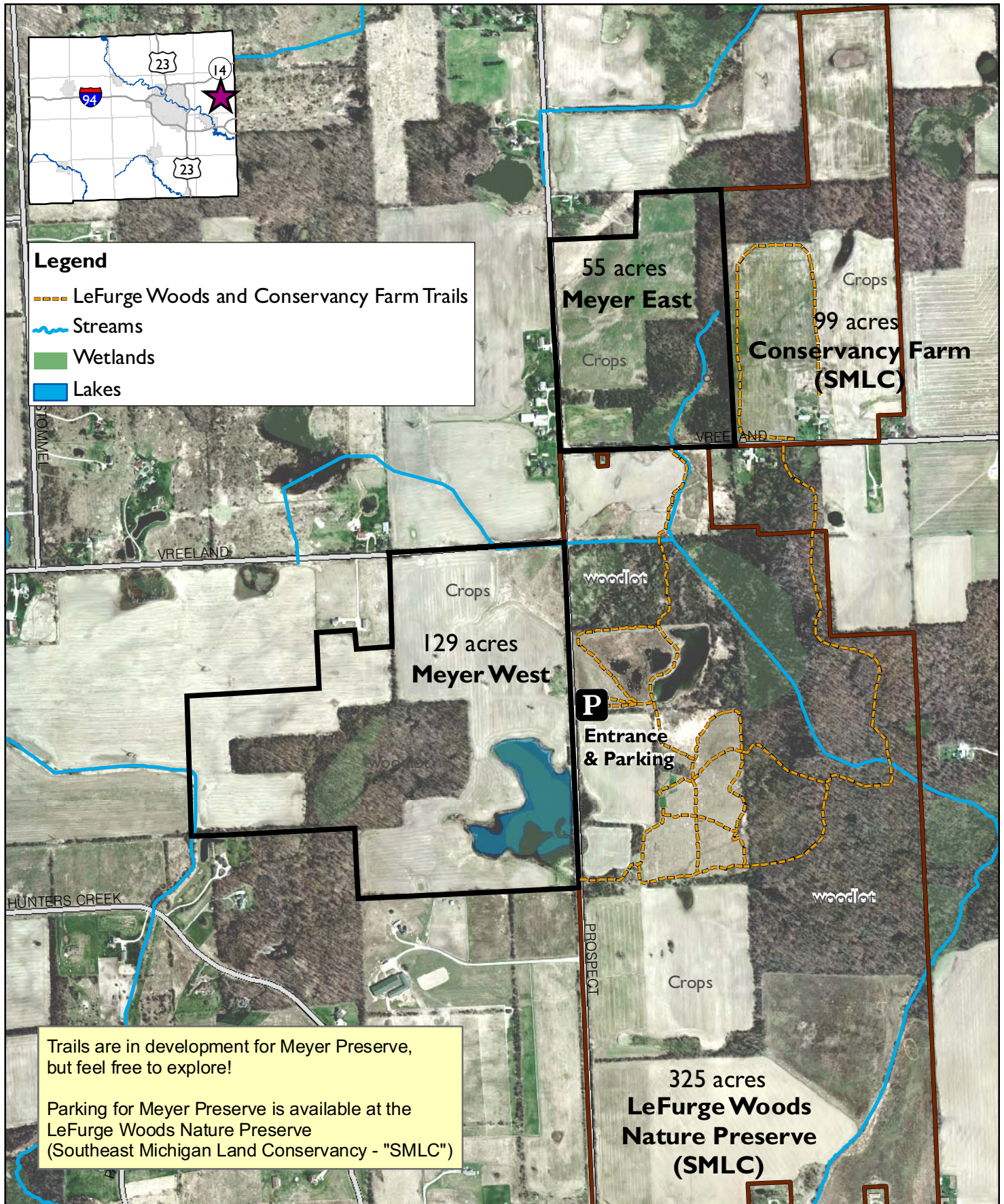


Meyer Preserve

(including Conservancy Farm & LeFurge Woods Nature Preserve owned by the Southeast Michigan Land Conservancy)



Trails are in development for Meyer Preserve, but feel free to explore!

Parking for Meyer Preserve is available at the LeFurge Woods Nature Preserve (Southeast Michigan Land Conservancy - "SMLC")



Washtenaw County
Natural Areas Preservation Program
(734) 971-6337
napp.ewashtenaw.org

Prepared by Washtenaw County Parks & Recreation Commission
August 6, 2010
USGS Topographic Contours (1:24,000)
Washtenaw County 2007 Aerial

