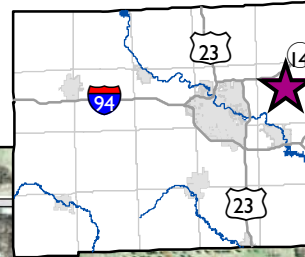


Kosch-Headwaters Preserve Trail Map

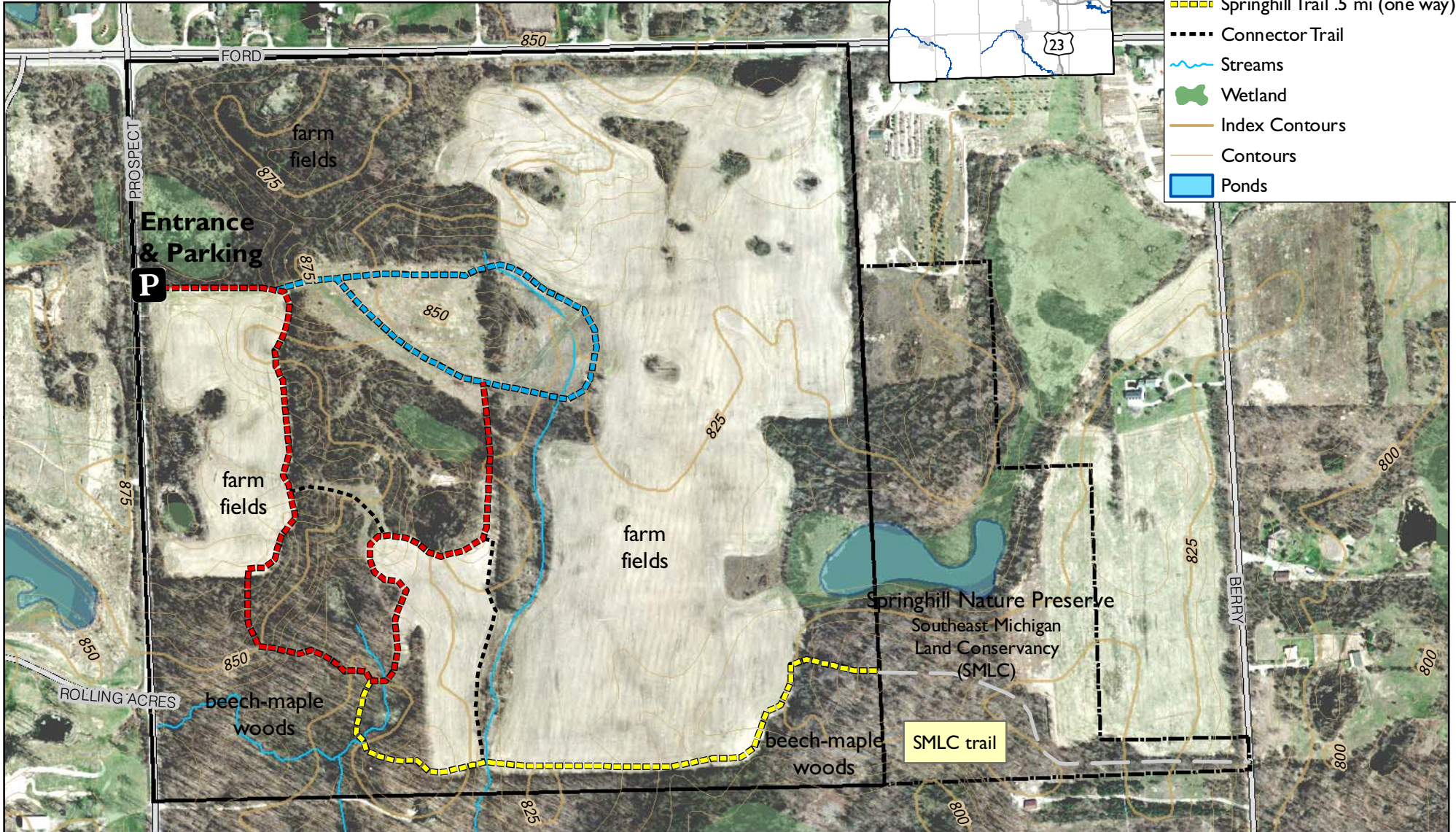
160 acres

Washtenaw County
Locator Map



Legend

- Woodland Loop Trail .75 mi
- Field Loop Trail .5 mi (one way)
- Springhill Trail .5 mi (one way)
- Connector Trail
- Streams
- Wetland
- Index Contours
- Contours
- Ponds



Washtenaw County
Natural Areas Preservation Program

(734) 971-6337
napp.ewashtenaw.org

Prepared by Washtenaw County Parks & Recreation Commission
August 6, 2010
USGS Topographic Contours (1:24,000)
Washtenaw County 2007 Aerial

