



**WASHTENAW COUNTY
FINANCE DEPARTMENT**

Purchasing Division

P.O. Box 8645, 220 N. Main, Ann Arbor, MI 48107-8645
Phone (734) 222-6760, Fax (734) 222-6764
www.purchasing.ewashtenaw.org

December 12, 2006

RFP # 6303 Addendum # 1

Subject Architectural & Planning Services Prebid Meeting Notes
Location ECGC 415 W. Michigan

Notes Phase 2: Please also include in your price an abbreviated review of existing conditions for the Chelsea District Court site; the other satellite court site located at 122 S Main Chelsea Mi. This will only involve a review and recommendations on existing court support functions. This facility is 10,100 SQFT. Please see attached drawing.

ECGC walkthrough questions

County concerns:

- 1) Proper screening
- 2) Prisoner transport systems
- 3) Update to Michigan State Court Standards

Design Minimum Requirements:

- 1) Schematic Design First Step
- 2) Floor Plan is Requested
- 3) Building & Building Envelope Only-No Site Improvements
- 4) Minimal Design-One (1) Court & One (1) Magistrate
- 5) Optimal Design-Two (2) Court & One (1) Magistrate

Proposal Requirements:

- 1) Security Aspect
 - a. Existing Perimeter Doors-Possible elimination?
 - b. Front Vestibule-Public screening
 - c. Prisoner Transport
 - d. Prisoner Lockups
 - e. Prisoner Transport within building envelope
- 2) Technology-Looking for suggestions
- 3) Budget-Cost in narrative form

Engineers Requirement:

- 1) Feasibility Study
- 2) One line Diagrams

Project Timeline

- 1) Initial Design & Scope- up to 6 Months

Requested Information

- 1) Site Plan-Will be supplied to all bidders
- 2) Addendums-Will be issued by Tuesday, December 12, 2006

Attendees

WTM & Associates-Douglas Kueffner
Hobbs & Black-John Hinkley/Brian Bagrick
HDR-Glen Hodgson
Landmark Design-Steven Jara
Redstone-Daniel Redstone
Partners in Architecture-David Gassen
NSA-Angelo Torcolacci
Karnak Engineering-Lorie Lodico
DiClemente Siegel Design-Paul Novak
GMB-James Simpkins
CDPA-Stacy Peterson
Washtenaw Engineering-Adriana Iraola
Integrated-Maria Kook
Van Tine-Gina Van Tine
CHMP-Ted Williams

Any questions, contact Robert Devault at (734) 222-6760 devaultb@ewashtenaw.org or Jason Fee at (734) 222-3792 feej@ewashtenaw.org

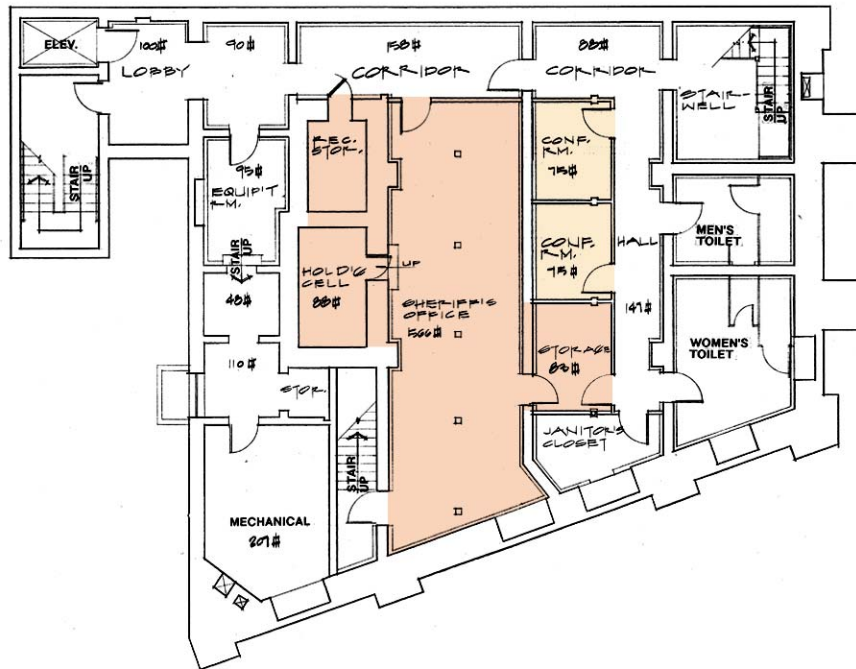
Robert G. Devault, C.P.M.
Purchasing Manager

Attachments: Chelsea Courthouse Basement Plan
Chelsea Courthouse First Floor Plan
Chelsea Courthouse Second Floor Plan

cc: Bid # 6303



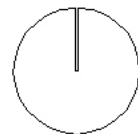
CHELSEA COURTHOUSE, CHELSEA



Legend

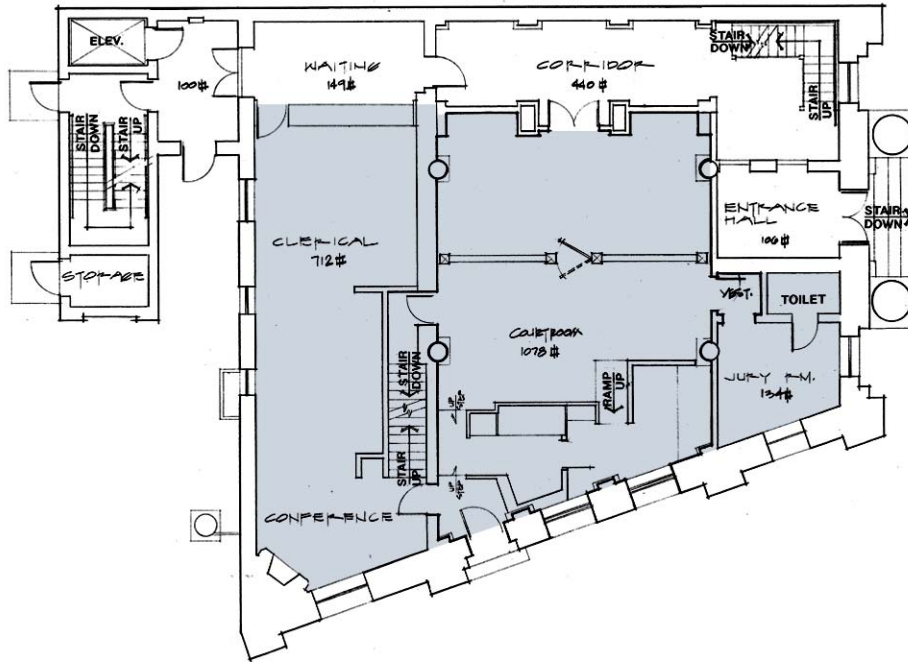
- Conference
- File Storage

BASEMENT PLAN





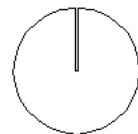
CHELSEA COURTHOUSE, CHELSEA



Legend

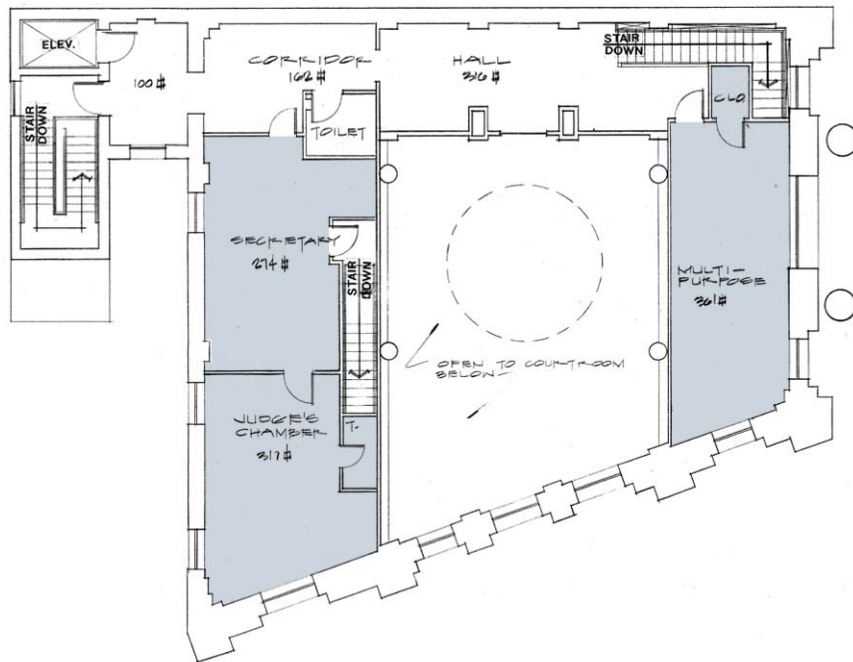
■ 14 District Court

FIRST FLOOR PLAN





CHELSEA COURTHOUSE, CHELSEA



Legend

■ 14 District Court

SECOND FLOOR PLAN

