

Office of Public Defender

110 N. Fourth Ave., 4th floor, Ann Arbor, MI 48107-8645

Phone: (734)222-6970 Fax: (734)222-6985

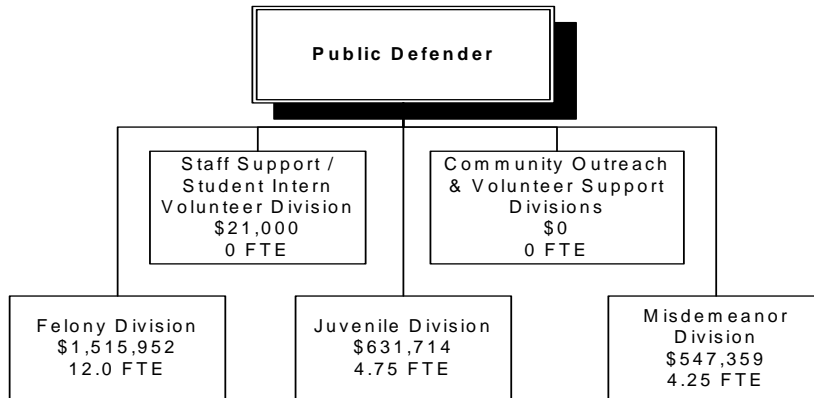
Our Mission

To prevent crime and enhance public safety by partnering with the community in the enforcement of constitutionally mandated rights of indigent persons to due process and justice through quality legal representations in all criminal, juvenile and civil appointments with the goal of maximum restoration to productive citizenship.

Our Vision

To ensure that needy persons receive appropriate mental health treatment and diversion from incarceration, to provide community based substance abuse treatment and services, to provide educational and training opportunities to increase gainful employment, to participate in the blueprint to end homelessness in our community, and to prevent crime and enhance public safety by restoring offenders to productive citizenship.

How We Are Structured:



Office of Public Defender Services We Provide (Programs)

Community Outreach & Volunteer Support Divisions

Partners with the community in recruiting and utilizing volunteer help to provide quality representation and restore clients to productive citizenship.

Staff Support/Student-Intern Volunteer Division

Operates to expand work capacity of other divisions through use of volunteers to augment support staff.

Misdemeanor Division

Appears for County in defense of State, City, Township and Village prosecutions.

Juvenile Division

Appears for County in defense of State prosecutions either as an attorney for juveniles charged with delinquencies or as guardian and attorney for juveniles who are victims of abuse and neglect cases or parents charged with abuse and neglect.

Felony Division and Civil Division

Appears for County in defense of State prosecutions of felony and civil charges.

Office of Public Defender

What We Do➔

(Process/Activities)

Community Outreach & Volunteer Support Divisions

Operation of community outreach program for partnering with community to prevent crime and restore offenders to productive citizenship to include recruitment and utilization of highly qualified volunteers

Felony Division and Civil Division

Legal representation on felony and civil charges

Juvenile Division

Legal representation of abuse and neglect cases

Legal representation of delinquency charges, to include Drug Court

Misdemeanor Division

Legal representation on misdemeanor charges.

Staff Support/Student-Intern Volunteer Division

To operate staff support and volunteer student lawyers/investigators intern/extern division

What We Produce➔

(Outputs)

Greater support and significant cost reduction through meetings and communications with all internal/external stakeholders in communities of interests to meet current challenges while properly planning for the future

Greater efficiency and effectiveness in pre-trial, preliminary examinations, motions, trials and/or pleas and sentencing dispositions

Greater efficiency and effectiveness in hearings, diversions, home visits, dispositions for abuse and neglect cases and appellate representation

Greater efficiency and effectiveness in pre-probable cause, trials/admissions and dispositions for delinquency charges and operation of Drug Court

Pre-trial, motions, trials/pleas, sentencing and civil representation

Essential and effective assistance provided economically and efficiently

How Efficient Are We

(Process Measures)

Measurement	2004 Actual	2005 Projected	2006 Target	2007 Target
Value of services received from volunteer student lawyers/investigators	\$955,000	\$955,000	\$985,000	\$985,000
Number of disposition of case charges - Felony Division	3469	3504	3539	3574
Number of disposition case charges - select civil cases - Misdemeanor Division	122	104	105	106
Number of disposition case charges - Misdemeanor Division	4557	4602	4648	4694
Number of delinquency charges, hearings, and dispositions and appeals	1219	1231	1243	1255
Number of case charges opened - select civil cases - Misdemeanor Division	110	111	112	112
Number of case charges opened - Misdemeanor Division	3539	3574	3610	3646
Number of case charges opened - Felony Division	2708	2735	2762	2790
Number of abuse and neglect hearings, dispositions and appeals	1451	1466	1481	1496
Average number of full-time volunteer Student Lawyers/ Investigators throughout the year	47	47	49	49

Who We Serve

(Customers)

Clients and staff attorneys - Support Staff Division
 Clients charged with felonies
 Clients charged with misdemeanors
 Juvenile clients charged with delinquencies or victims of abuse/neglect
 Other components of CJS, County Government, and Citizenry at large

What We Are Accomplishing

(Outcomes)

Community Outreach & Volunteer Support Divisions

Achievement of greater support and understanding of the need to improve processes, without added costs, whereby resources are more economically, efficiently and effectively combined to make safety, security and justice accessible and affordable to all

Felony Division and Civil Division

Effective, efficient and economical disposition of all felony case/charges and select civil case/charges

Juvenile Division

Efficient, effective and economical disposition of all abuse/neglect, delinquency, and Juvenile Drug Court case/charges

Misdemeanor Division

Effective, efficient and economical disposition of all misdemeanor and select civil case/charges

Staff Support/Student-Intern Volunteer Division

Achievement of optimum efficiency and effectiveness in support of departmental operations with maximum use of qualified volunteers

Who We Work With

(Partners)

All components of the Criminal Justice System, related governmental agencies, and community interest groups throughout citizenry-at-large

How Effective Are We

(Program Measures)

Measurement	2004 Actual	2005 Projected	2006 Target	2007 Target
Total operations/cost value of student intern staff	\$955,000	\$955,000	\$985,000	\$985,000
% of dispositions without valid grievances/lawsuits - Misdemeanor Division	100%	100%	100%	100%
% of dispositions without valid grievances/lawsuits - Juvenile Division	100%	100%	100%	100%
% of dispositions without valid grievances/lawsuits - Felony Division	100%	100%	100%	100%
% of dispositions without significant error - Support Staff Division	100%	100%	100%	100%
% of dispositions without significant error - Misdemeanor Division	100%	100%	100%	100%
% of dispositions without significant error - Felony Division	100%	100%	100%	100%
# of case/charge dispositions by individual capacity - Misdemeanor Division	1864	1883	1902	1920
# of case/charge dispositions by individual capacity - Juvenile Division	763	770	778	786
# of case/charge dispositions by individual capacity - Felony Division	315	318	328	325
# of case/charge dispositions by division - Felony Division	3469	3504	3539	3574
# of case/charge disposition by division - Misdemeanor Division	4660	4707	4754	4802
# of abuse/neglect and delinquency case/charges by division	2670	2697	2724	2751

Office of Public Defender

POSITION TYPE	No. POSITIONS	No. POSITIONS	No. POSITIONS	No. POSITIONS
	1-1-2004	1-1-2005	1-1-2006	1-1-2007
MANAGERIAL	2.00	2.00	2.00	2.00
PROFESSIONAL	14.00	14.00	14.00	14.00
SUPPORT	6.00	5.00	5.00	5.00
Total	22.00	21.00	21.00	21.00

EXPENDITURES	2004 Actuals	2005 Adopted	2006 Requested	2006 Adopted	2007 Adopted
Personal Services	1,926,837	2,008,719	2,127,083	2,127,083	2,243,247
Supplies	15,349	15,160	15,160	15,160	15,160
Other Services	57,322	77,838	77,838	77,838	77,838
Internal Service Charge	388,986	388,475	495,944	495,944	495,944
Capital Outlay	0	0	0	0	0
Transfers Out	0	0	0	0	0
Total	\$2,388,494	\$2,490,192	\$2,716,025	\$2,716,025	\$2,832,189

VARIANCE ANALYSIS

Personal Services: In 2005, one Legal Clerk position was placed on hold vacant. Increases in salary and fringes reflect labor contract agreements and estimated fringe rates for 2006 and 2007.

Internal Service Charges: Change due to allocation of indirect cost recalculation on annual basis.

EXPENDITURES

