

Prosecuting Attorney

200 North Main, Suite 300, Ann Arbor, MI 48107-8645

Phone: (734)222-6620 Fax: (734)222-6610

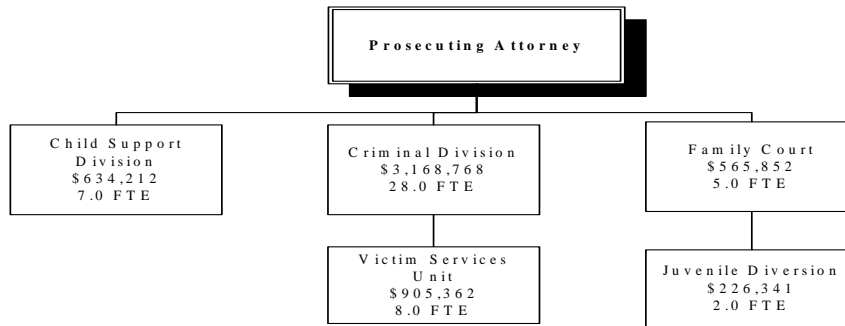
Our Mission

To protect the rights, safety and security of all persons within the boundaries of the County through fair enforcement of state laws mandated by State Constitution and Statutes.

Our Vision

Washtenaw County Prosecuting Attorney will set the standard for firm, fair and progressive prosecution and innovative prevention strategies.

How We Are Structured:



Prosecuting Attorney

Services We Provide (Programs)

Domestic Violence Grant

Provide services to victims of domestic violence

Juvenile Diversion Program

Diversion for first time non-violent offenders / mentoring

Victim Service Unit

Provide services to victims of crimes, assist in securing witnesses for trials and hearings, and assist victims through the court process

Criminal

To prosecute all felony and state misdemeanor offenses

Cooperative Reimbursement (Child Support)

To represent children in matters of support and paternity

Family Court (Juvenile/Probate)

Juvenile delinquency proceedings
Abuse and neglect proceedings

Prosecuting Attorney

What We Do➔

(Process/Activities)

Cooperative Reimbursement (Child Support)

Establish paternity where necessary

Criminal

Authorize warrants

Litigate criminal cases

Domestic Violence Grant

Charging and prosecuting batterers

Provide support and referral services to victims of domestic violence with emphasis on victim safety

Family Court (Juvenile/Probate)

Prosecution of delinquent juveniles and allegations of abuse and neglect of children

Juvenile Diversion Program

Select nonviolent juvenile first offenders for diversion from court

Victim Service Unit

Assist victims of crime through the court system and Michigan Crime Victims Rights Act

What We Produce➔

(Outputs)

Child support orders are obtained

Laws are uniformly enforced through proper charging decisions

Cases are litigated with firm and fair resolution of state felonies and misdemeanors

Cases are litigated with firm and fair resolution

Assistance is provided to victims

Delinquency proceedings are adjudicated for misdemeanors and felonies committed by juveniles; children are protected from abusive or neglectful parents

Juveniles are successfully deferred from juvenile prosecution

Successful prosecution of criminal cases; provide support and referral services to victims

How Efficient Are We

(Process Measures)

Measurement	2004 Actual	2005 Projected	2006 Target	2007 Target
# of warrants authorized				
# of victims served				
# of petitions reviewed				
# of paternities established				
# of juvenile petitions reviewed				
# of court appearances				
# of child support orders obtained				
# of cases reviewed				

Who We Serve

(Customers)

Children, custodial parents, public, private attorneys, DHS, FOC, other states

Juveniles, courts

Public, children, police agencies, parents, private attorneys, Center for Forensic Psychology, community mental health, juvenile case workers, DHS, protective services

Public, victims of crimes, federal/state/local police agencies, private attorneys

Victims of crimes, police, courts, witnesses

Victims of domestic violence, police, courts

What We Are Accomplishing

(Outcomes)

Cooperative Reimbursement (Child Support)

Child support orders are obtained

Establish paternity where necessary

Criminal

Cases are litigated with firm and fair resolution of state felonies and misdemeanors

Laws are uniformly enforced through proper charging decisions (warrant requests reviewed)

Domestic Violence Grant

Assistance is provided to victims of domestic violence

Charging and prosecuting batterers

Managing OUAW Grant

Family Court (Juvenile/Probate)

Children are protected from abusive or neglectful parents

Delinquency proceedings are adjudicated for misdemeanors and felonies committed by juveniles

Juvenile Diversion Program

Juveniles are successfully deferred from juvenile prosecution

Victim Service Unit

Provide support and referral services to victims

Who We Work With

(Partners)

How Effective Are We

(Program Measures)

Measurement

2004

2005

2006

2007

Actual

Projected

Target

Target

of misdemeanor cases adjudicated

of juvenile petitions reviewed which are eligible for deferral

of felony cases adjudicated

of dollars in child support ordered

Prosecuting Attorney

POSITION TYPE	No. POSITIONS	No. POSITIONS	No. POSITIONS	No. POSITIONS
	1-1-2004	1-1-2005	1-1-2006	1-1-2007
MANAGERIAL	5.00	5.00	5.00	5.00
PROFESSIONAL	26.00	26.00	27.00	27.00
SUPPORT	18.00	18.00	18.00	18.00
Total	49.00	49.00	50.00	50.00

EXPENDITURES	2004 Actuals	2005 Adopted	2006 Requested	2006 Adopted	2007 Adopted
Personal Services	3,914,725	4,292,312	4,628,389	4,628,389	4,886,757
Supplies	51,976	36,098	36,098	36,098	36,098
Other Services	166,307	140,393	140,393	140,393	140,393
Internal Service Charge	1,156,754	1,106,331	695,655	695,655	695,655
Capital Outlay	0	0	0	0	0
Transfers Out	0	0	0	0	0
Total	\$5,289,762	\$5,575,134	\$5,500,535	\$5,500,535	\$5,758,903

VARIANCE ANALYSIS

Personal Services: Increases in salary and fringes reflect labor contract agreements and estimated fringe rates for 2006 and 2007. 1.0 FTE APA was added through administrative action after the 2006 budget resolution was passed.

Internal Service Charges: Change due to allocation of indirect cost recalculation on annual basis.

EXPENDITURES

