

Washtenaw County- MSU Extension Master Gardener Program

January 12 – April 6, 2011
Wednesday's
9:30 am to 2 pm

Classes will be held at the **Washtenaw County Western Service Center, 705 N. Zeeb Road, Ann Arbor.**

Applications are obtained by attending an Informational Meeting in November at the **Washtenaw County Western Service Center, 705 N. Zeeb Road, Ann Arbor.** To sign up for an informational meeting contact the MSU Extension office at (734) 997-1678.

Master Gardener Course Fee: \$300.00

****Do not send money without obtaining an application first.**

A limited number of scholarships (based on financial need) are available.

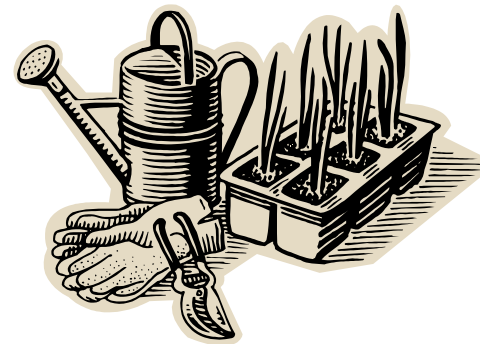
Acceptance into the program is based on responses to application questions. Washtenaw County residents are given priority over out-of-county residents. **Applications must be turned in by Dec. 2, 2010.** Beyond this date you will need to contact the Master Gardener program coordinator, Cindy Fischer, by calling 222-3948.

Accommodations for persons with disabilities may be requested by calling the local extension office one week prior to the event to ensure sufficient time to make arrangements. Request received after this date will be met when possible.

Michigan State University Extension programs and materials are open to all without regard to race, color, national origin, gender, gender identity, religion, age, height, weight, disability, political beliefs, sexual orientation, marital status, family status or veteran status.
MSU is an Affirmative Action/Equal Opportunity Employer.



Become a Master Gardener

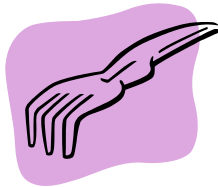


Washtenaw County MSU Extension
705 N. Zeeb Road
PO Box 8645
Ann Arbor, MI 48107-8645

Phone: 734-997-1678
FAX: 734-222-3990
email: msuextension@ewashtenaw.org



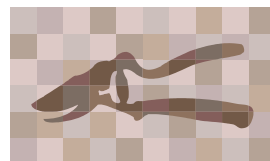
Are you an avid gardener? Do you enjoy sharing your gardening knowledge with others? Do you survive Michigan winters by reading garden magazines and seed catalogs? If so, you are a great candidate for the Michigan Master Gardener program.



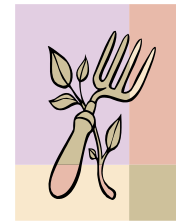
Historically the Master Gardener program began in the state of Washington in 1972 and has since spread across the country. Washtenaw County, MSU Extension has run the program annually since 1978.

Master Gardeners undergo a specialized course in gardening taught by Michigan State University Extension staff. The twelve week program provides an overview of major horticultural subjects. Students put their knowledge to work educating the public in the areas of gardening and landscapes.

Certificates are awarded upon successful completion of the classroom program and fulfillment of 40 hours volunteer work. Master Gardeners assist in answering garden hotline questions, developing educational materials, working within their community on gardening and beautification projects, as well as providing information at fairs and other community events.



Being a Master Gardener means you are committed to sharing your gardening knowledge to educate and introduce a wonderful, healthy hobby to future generations. It is an enjoyable experience that lasts a lifetime as you meet gardeners from all walks of life that share the same love of gardening.



Educational opportunities are available to Master Gardeners, ranging from local horticulture classes to State and International conferences. Many alumni of the program go on to earn their Advance Master Gardener status. Newsletters provide educational articles, volunteer opportunities and a calendar of tours and events.

Master Gardeners are truly a resource to their community. These dedicated volunteers help gardeners to solve plant problems, promote environmental responsibility, work with youth and community gardens, keep the public informed on pests, and teach residents about appropriate plants for our climate.



Find out more about the Master Gardener program by contacting Cindy Fischer, Master Gardener Program Coordinator at 222-3948 at the MSU Extension Office.