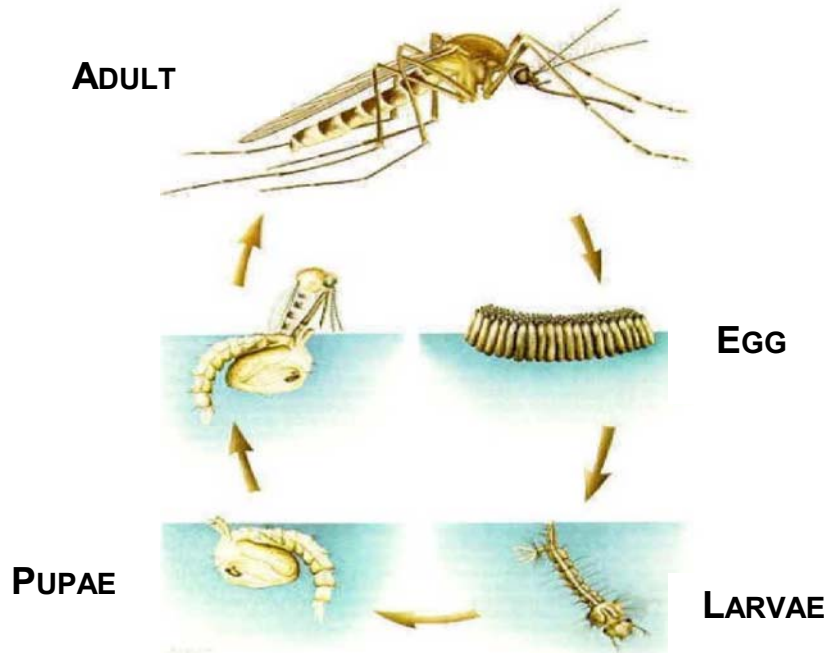


Mosquito Life Cycle



EGG STAGE

EGGS (1-2 DAYS):

Laid in "rafts" of 150-300, typically on the surface of standing water (often in water polluted with organic matter, such as storm sewer catch basins, sewage treatment plant lagoons, stagnant pools & ponds, puddles, scrap tires, & other artificial containers).

BREEDING SITE "SOURCE REDUCTION":

Eggs, larvae & pupae live in standing water, so eliminate standing water. Clean up garbage. Store tires dry & under cover. Fill puddles. Remove decaying vegetation & floating debris from ponds & treatment plant lagoons. Change water weekly in birdbaths and other containers. Keep rain gutters, roadside ditches, etc. free of debris so water can flow. Aerate garden ponds.

MOSQUITO PREDATION:

To control immature stages, encourage natural aquatic ecosystems (with fish, frogs & insect life). Introduce permitted fish in closed water bodies.

LARVAL STAGE

WRIGGLERS (7-12 DAYS):

Feed on organic debris in water. Breathe air through siphon tube on end of body.

SOURCE REDUCTION:

See "Egg Stage."

LARVICIDING:

If elimination or modification of breeding sites is not possible, consider applying larvicide to water bodies containing larvae. Certified pesticide applicators have several "reduced risk" options, including bacterial toxins specific to mosquitoes. A product permitted for use by the "lay person" is a formulation of *Bacillus thuringiensis israelensis* sold in garden supply stores.

PUPAL STAGE

TUMBLERS (2-3 DAYS):

Float near water surface. Non-feeding.

SOURCE REDUCTION:

See "Egg Stage".

ADULT STAGE

ADULTS:

Hibernate in winter as mated females. Become active in spring & produce several generations during the "mosquito season." *C. pipiens* population numbers peak in August. Females require a "blood meal" to form each batch of eggs & typically search for blood source near the breeding site. Some species usually bite birds, but will also bite mammals. *C. pipiens* are most active in evenings.

REDUCE EXPOSURE TO BITING MOSQUITOES:

Use screens on houses & tents. Avoid places & times when mosquitoes bite. If in places where mosquitoes are biting, wear long-sleeved clothing. Apply mosquito repellents (such as 30% DEET products) to skin or clothing. Read label instructions & precautions. Pay attention to the type & concentration of "active ingredients" in the product. CAUTION: Do not use DEET repellent on children less than 2 months of age.

PESTICIDES:

Only consider applying mosquito adulticides (pesticides that kill adult mosquitoes) if disease in the human population is detected or suspected in your area.

**For more information, contact the
Washtenaw County West Nile Virus Hotline:
(734) 544-6750**