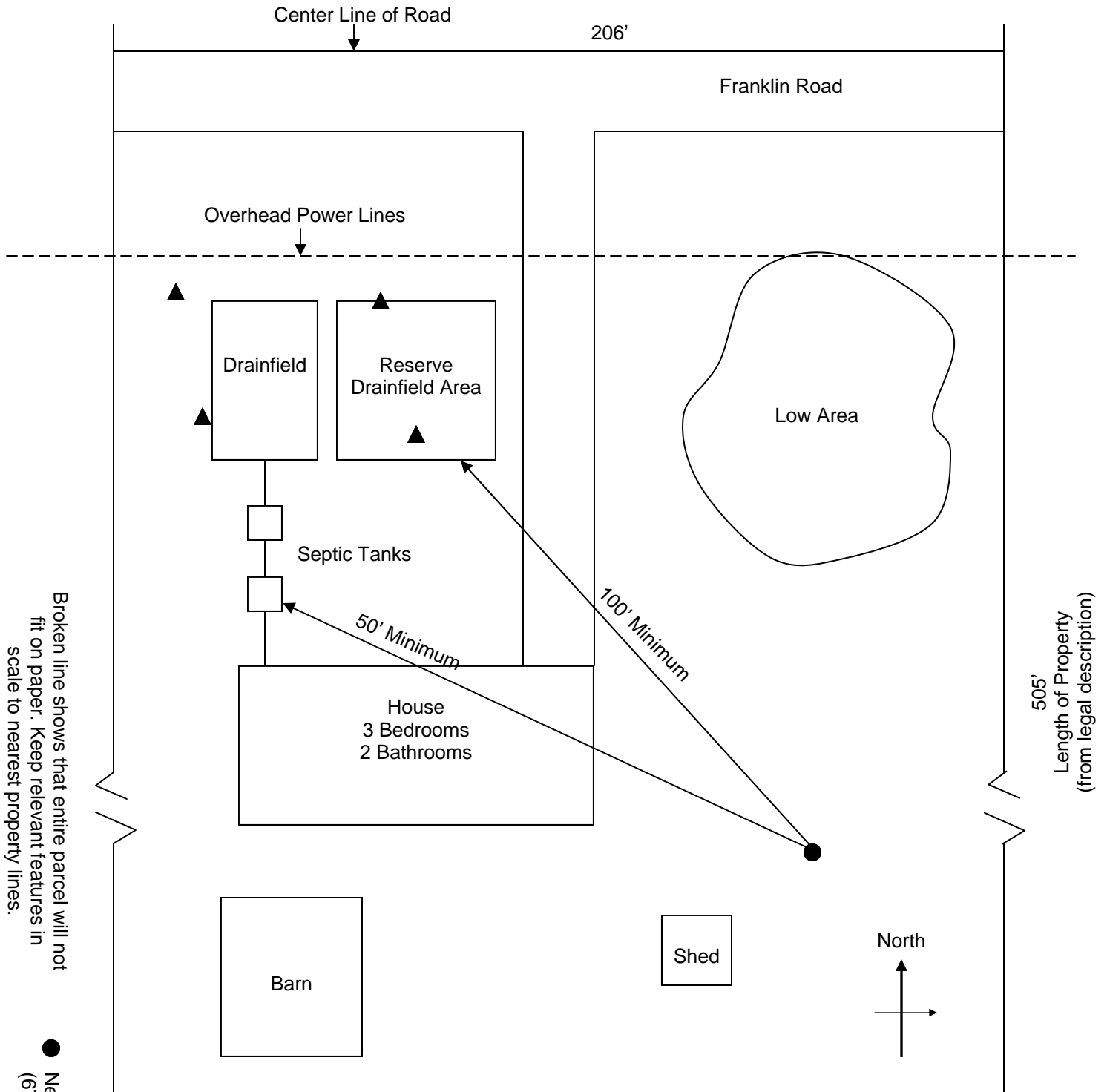




# SAMPLE PLOT PLAN



Broken line shows that entire parcel will not fit on paper. Keep relevant features in scale to nearest property lines.

● Neighbor's Well (6799 Franklin Rd.)

- ▲ Location of approved soil test pits
- Location of wells

Prepared by:  
 Jim & Sally Smith  
 6801 Franklin Road  
 Dexter, MI 48130  
 (Webster Township)  
 Parcel 3  
 June 26, 2006  
 Scale: 1"=40'