

A21: Ann Arbor City

Drinking Water: Well Information

None.

Drinking Water: Consumer Confidence Report Summary

Approximately eighty-five percent of Ann Arbor's drinking water comes from the Huron River, with the remainder coming from wells south of the city. Both water supplies are pumped to the water treatment plant, where it is blended, treated and pumped to customers.

The water is treated by lime softening to remove hardness (calcium, magnesium), particles, and organic material. The water is further treated with:

- Ozone for disinfection and making the water taste better
- Carbon/sand filtration to remove particles and other compounds
- Chloramine (chlorine and ammonia) disinfection for the distribution system
- Fluoride addition for dental health

The water treatment plant processes 6 billion gallons of water a year and services approximately 120,000 permanent residents.

Contact: (734) 994-2840

Email: water@a2gov.org

Surface Water Features: **First Sister Lake, Second Sister Lake, Huron River, Barton Pond, Traver Creek, Malletts Creek, and Millers Creek.**

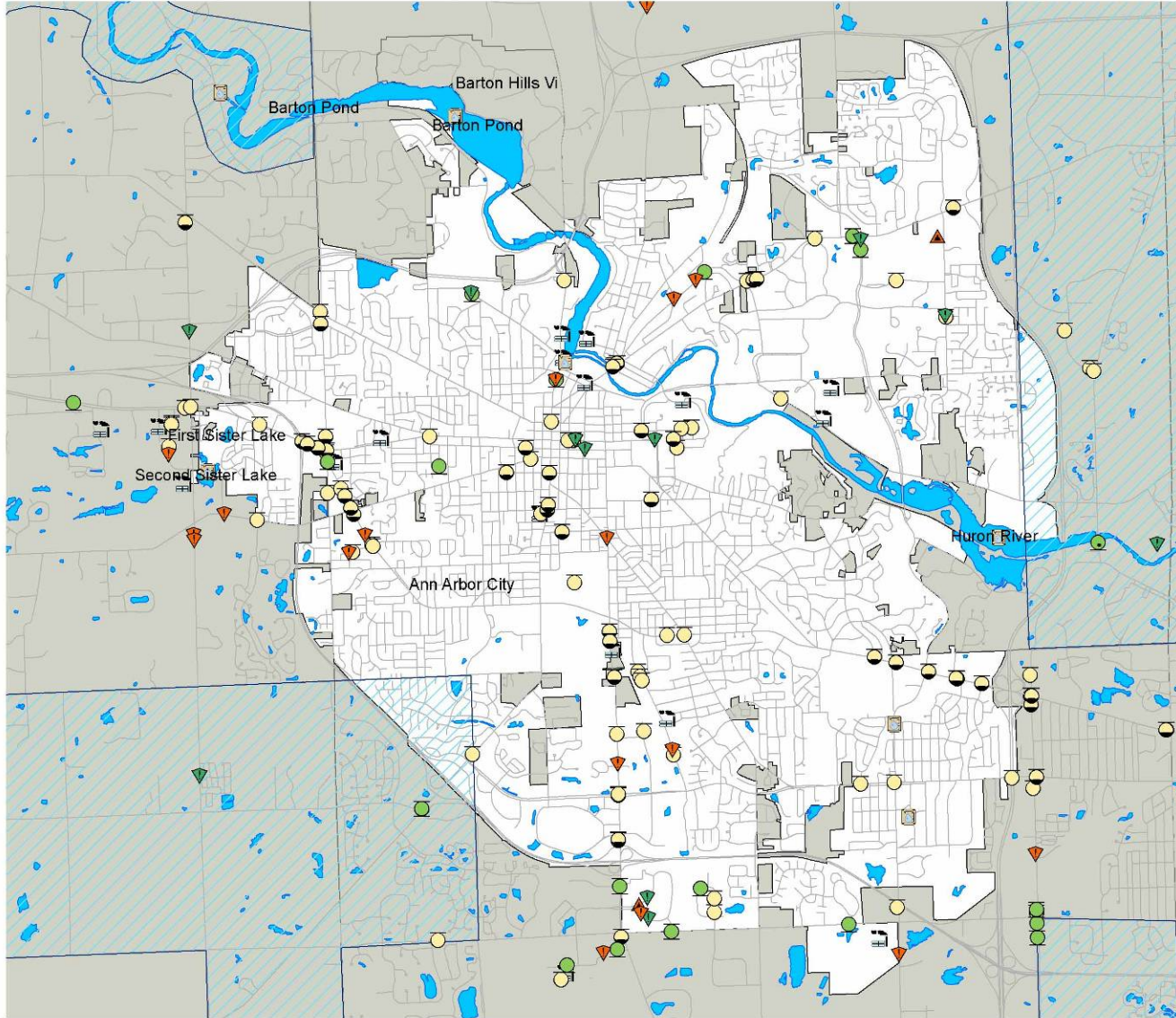
Ann Arbor City - Dolph Park Observation Deck



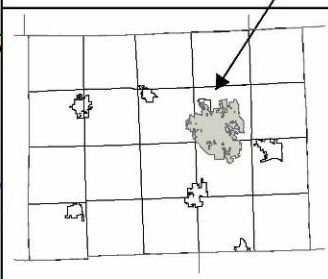
Local Indicator Data

The City of Ann Arbor has five TMDL sites, including four in the Huron River and its sub-basins, dealing with *E. coli*, phosphorus, pathogens, poor macroinvertebrate communities, and PCBs. It has twelve Part 201 Sites. It has nine NPDES permits for storm water and nine NPDES pollutant discharge permits. The City of Ann Arbor has 191 UST sites, 47 LUST, and 16 AST sites.

Ann Arbor City: Water Quality Indicators

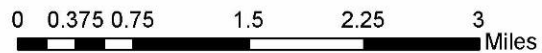


Washtenaw County:
Ann Arbor City



Legend

- Septage Disposal Sites - 0
- NPDES Storm Sites - 9
- NPDES Permit Sites - 9
- TMDL Sites - 5
- AST Sites - 16
- LUST Sites - 47
- UST Sites - 191
- Part 615 Sites - 0
- Part 201 Sites - 12
- Part 115 Sites - 0
- Part 111 Sites - 2
- Well First Area
- Lakes
- Ann Arbor City



Visit Washtenaw County
Government Online:
www.ewashtenaw.org



Created by: M. Paul Lippens
Environmental Health, October 2005.
No reproduction of this print shall be made
without authorization of Washtenaw County.
The map shown here is for illustrative purposes
only, and is not suitable for site-specific
decision-making. The data depicted is
compiled from a variety of sources, thus this
information is provided with the understanding
that the conclusions drawn from the data are
solely the responsibility of the user. Any
assumptions of the legal status of this data
are hereby disclaimed.