

## **A20: Ypsilanti Township**

The predominant glacial feature in Ypsilanti Township is glacial lake plain, comprising over 80% of the land surface. The remainder of the Township consists of the inner Defiance moraine. Glacial lake plains are characterized by finely textured "lake sediment" soil.

Glacial lake plain soil is typically not a good aquifer material. This is evidenced by the presence of many low yield (less than 7 gallons per minute) wells and several locations identified as dry holes. Sections 25, 26, 29, and 31 through 36, have been identified as "Well First." A well with at least seven gallons per minute of potable water must be permitted and drilled prior to constructing a residential home in "Well First" areas.

Approximately 41% of the land surface of the Township is covered by sandy soils, while another 24% of the land surface is covered by soils in which the seasonal water table comes to the surface. Surface water covers 2.8% of the Township.

### *Drinking Water: Well Information*

From 1968 through 1992 there have been 276 water wells drilled in Ypsilanti Township. Between the years, 2000 to 2005, there were 37 new wells drilled and 27 wells were replaced. The average well depth is 97 feet.

### *Drinking Water: Consumer Confidence Report Summary*

**Ypsilanti Township:** See Ypsilanti City (YCUA)

## **Ypsilanti Twp. – Ford Lake**

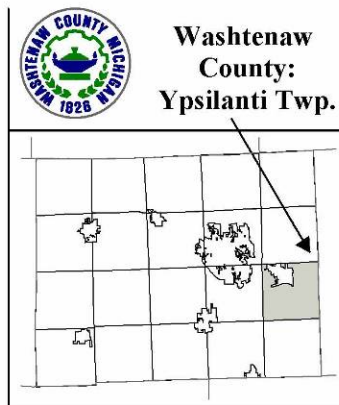
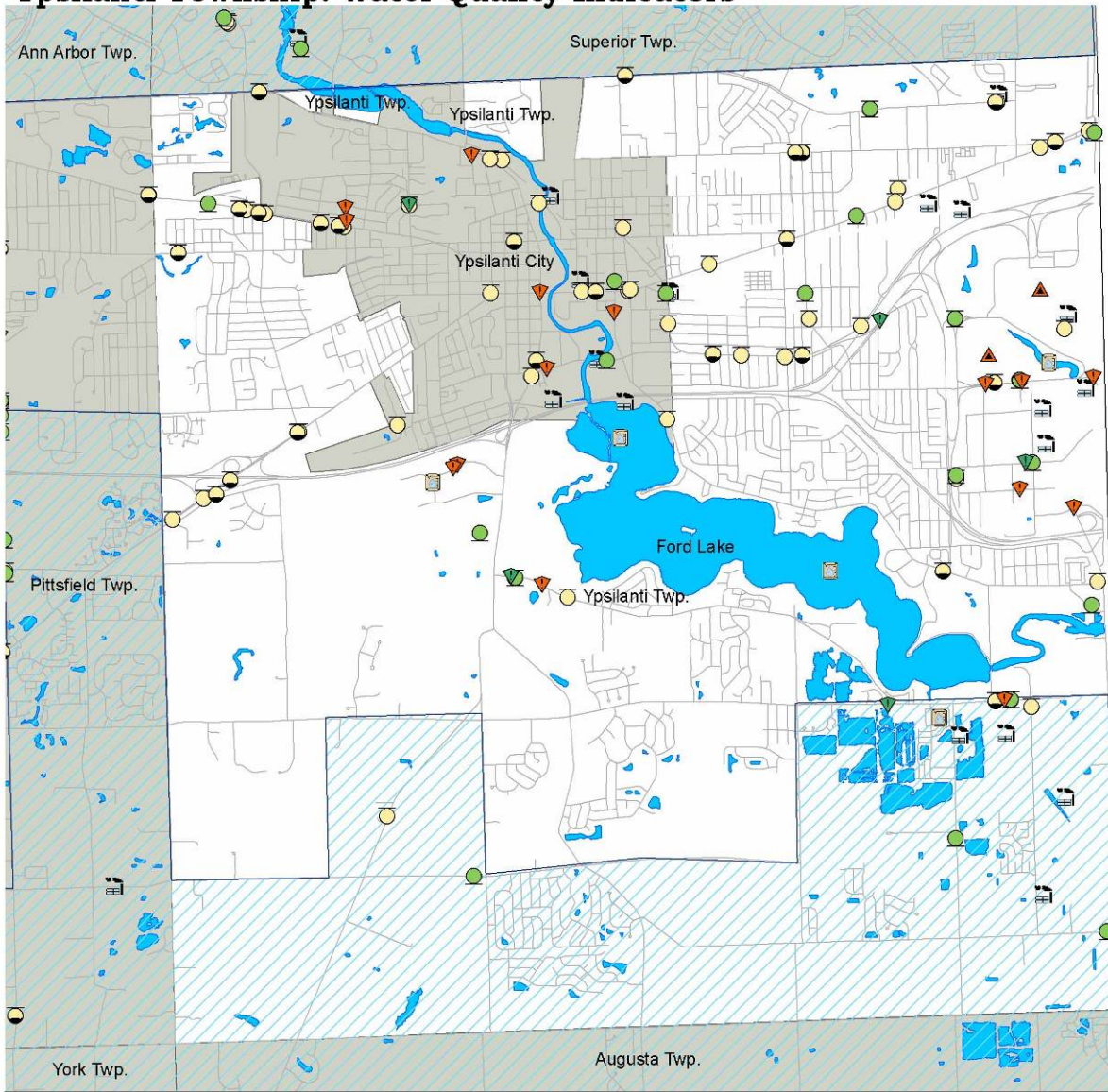


*Surface Water Features:* **Ford Lake, Paint Creek, Huron River.**

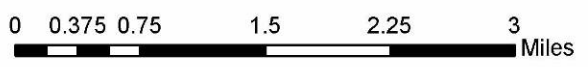
### *Local Indicator Data*

Ypsilanti Township has five TMDL sites, including two at Ford Lake for phosphorus and nuisance algae, and two at Ford/Belleville Lake for mercury and PCBs. It has twelve Part 201 sites. It has nine NPDES permits for storm water and five NPDES pollutant discharge permits. Ypsilanti Township has 104 UST sites, 28 LUST, and 27 AST sites.

# Ypsilanti Township: Water Quality Indicators



- Legend**
- Septage Disposal Sites - 0
  - NPDES Storm Sites - 9
  - NPDES Permit Sites - 5
  - TMDL Sites - 5
  - AST Sites - 27
  - LUST Sites - 28
  - UST Sites - 104
  - Part 615 Sites - 0
  - Part 201 Sites - 12
  - Part 115 Sites - 0
  - Part 111 Sites - 0
  - Well First Area
  - Lakes
  - Ypsilanti Township



Visit Washtenaw County Government Online: [www.ewashtenaw.org](http://www.ewashtenaw.org)

Created by: M. Paul Lippens  
 Environmental Health, October 2005.  
 No reproduction of this print shall be made without authorization of Washtenaw County.  
 The map shown here is for illustrative purposes only, and is not suitable for site-specific decision-making. The data depicted is compiled from a variety of sources, thus this information is provided with the understanding that the conclusions drawn from the data are solely the responsibility of the user. Any assumptions of the legal status of this data are hereby disclaimed.