

#### **A4: Dexter Township**

As determined from the Washtenaw County Soil Survey conducted by the U.S. Soil Conservation Service, 42% of the land surface in Dexter Township has sandy coarse textured soils and 20% has soils that are hydrous or have a seasonal high water table that reaches the ground surface. 7.5% of Dexter Township is surface water.

Adequate quantities of potable water are difficult to find in areas west of Dexter-Pinckney Road and near the Huron River. This is also true for areas along Flemming and Island Lake Roads.

##### *Drinking Water: Well Information*

From 1968 through 1992 there have been 862 water wells drilled in Dexter Township. Between the years 2000 to 2005 there were 328 new wells drilled and 197 wells were replaced. The average well depth in the township is 89 feet.

*Drinking Water: Consumer Confidence Report Summary*  
**None.**

*Surface Water Features:* **Portage Lake, Silver Lake, Half Moon Lake, Riker Lake, North Lake, West Lake, Hiland Lake, Crooked Lake, Four Mile Lake, Huron River.**

#### **Dexter Twp. – Huron River at Hudson Mills Metropark**



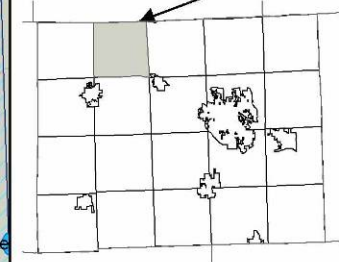
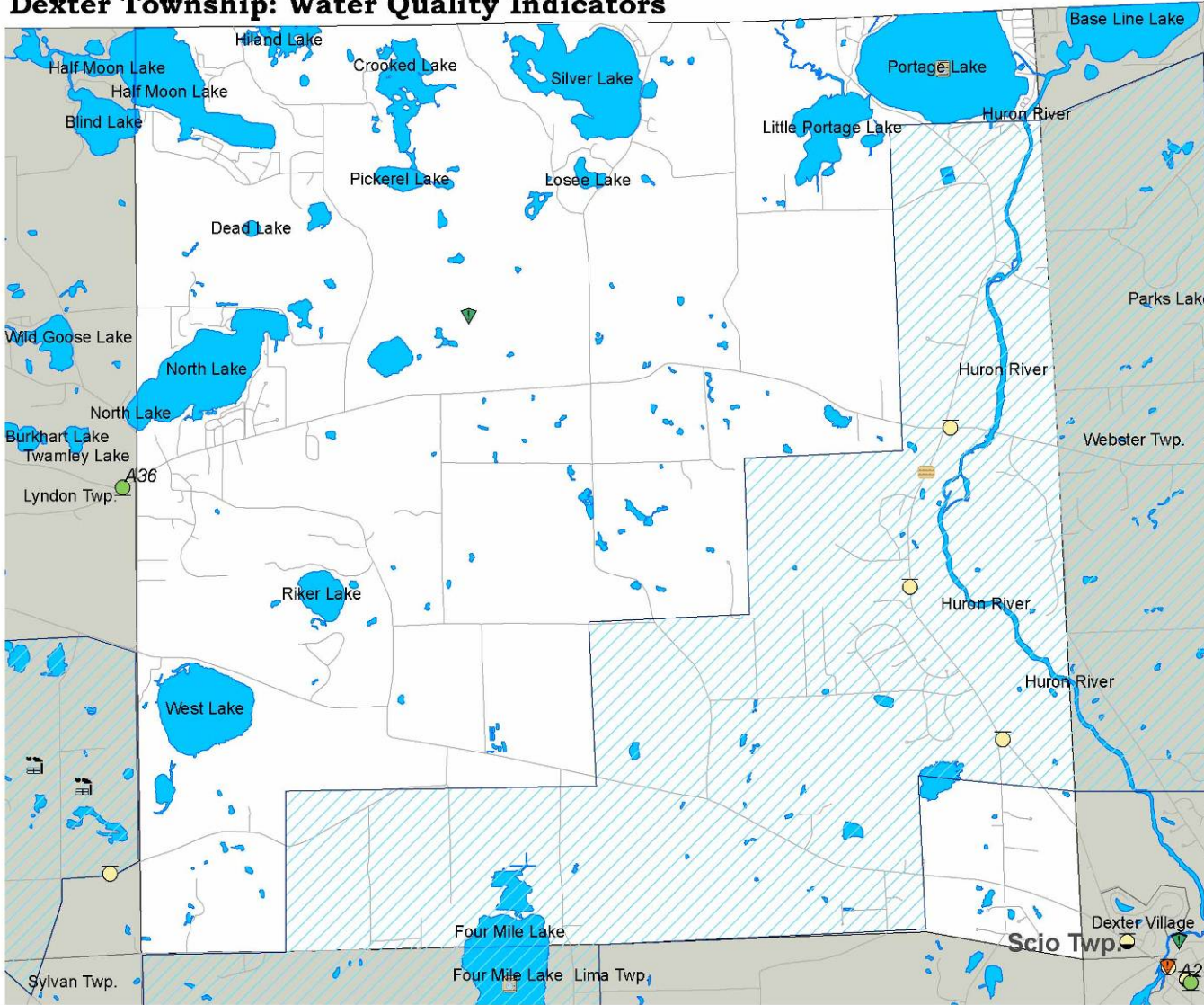
##### *Local Indicator Data*

Dexter Township has one TMDL site for mercury at Portage Lake. It has no Part 201 Sites. It has no NPDES permits for storm water and one NPDES pollutant discharge permit for the Multi Lakes Sewer authority on North Territorial Road. It also has one septage disposal site. Dexter Township has 8 UST sites but no LUST or AST sites.

# Dexter Township: Water Quality Indicators

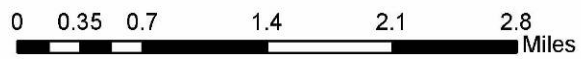


Washtenaw County:  
Dexter Twp.



## Legend

- Septage Disposal Sites - 1
- NPDES Storm Sites - 0
- NPDES Permit Sites - 1
- TMDL Sites - 1
- AST Sites - 0
- LUST Sites - 0
- UST Sites - 8
- Part 615 Sites - 0
- Part 201 Sites - 0
- Part 115 Sites - 0
- Part 111 Sites - 0
- Well First Area
- Lakes
- Dexter Township



Visit Washtenaw County  
Government Online:  
[www.ewashtenaw.org](http://www.ewashtenaw.org)



Created by: M. Paul Lippens  
Environmental Health, October 2005.  
No reproduction of this print shall be made  
without authorization of Washtenaw County.  
The map shown here is for illustrative purposes  
only, and is not suitable for site-specific  
decision-making. The data depicted is  
compiled from a variety of sources, thus this  
information is provided with the understanding  
that the conclusions drawn from the data are  
solely the responsibility of the user. Any  
assumptions of the legal status of this data  
are hereby disclaimed.