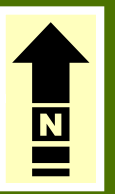
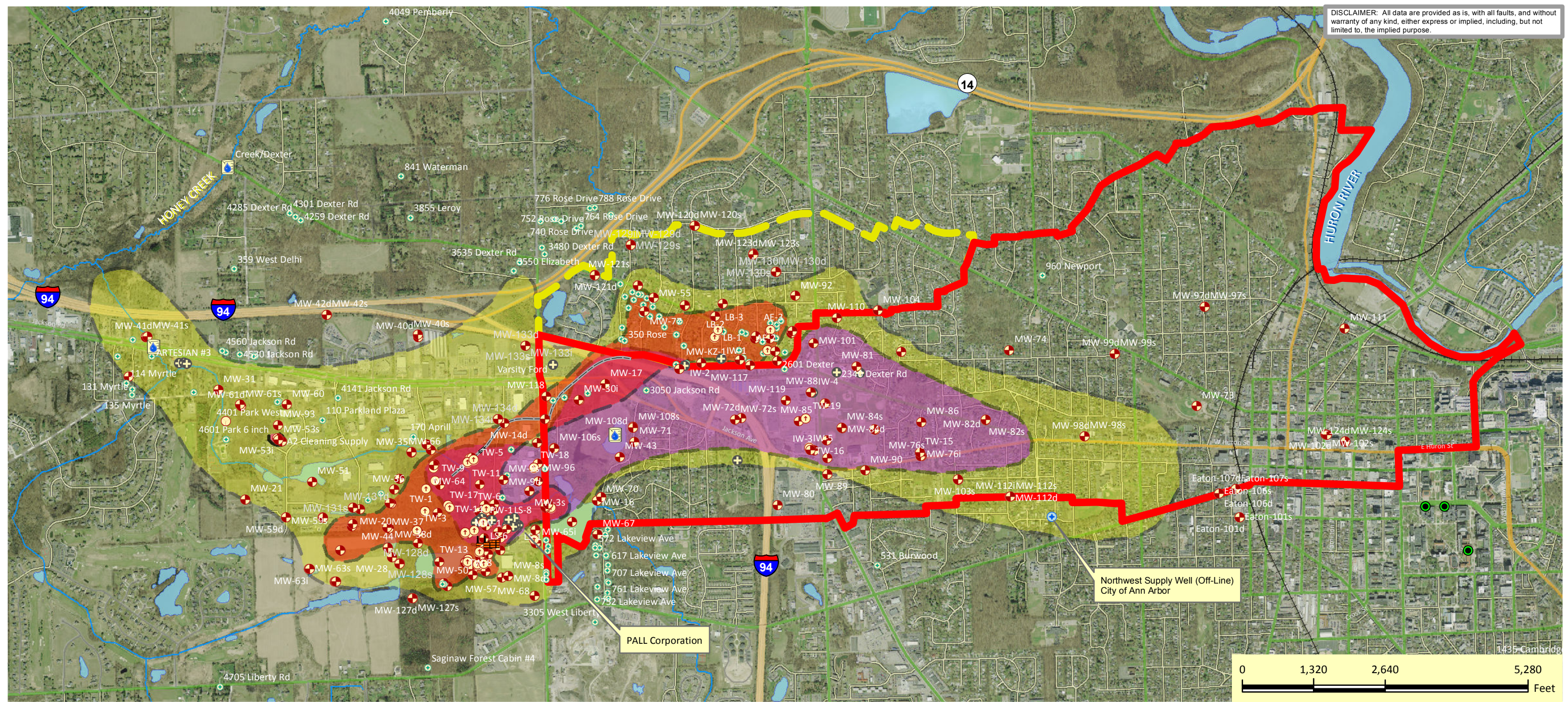




PALL CORPORATION (formerly Gelman Sciences, Inc.) 1,4-Dioxane Plumes, Well Locations, Prohibition Zone (PZ), and PZ Expansion Area Washtenaw County, Michigan



DISCLAIMER: All data are provided as is, with all faults, and without warranty of any kind, either express or implied, including, but not limited to, the implied purpose.



KEY

- | | | | |
|--|--|--|---|
| <ul style="list-style-type: none"> Monitoring Wells Injection Wells Extraction Wells Artesian Wells Misc. Wells Hydrogeologic Test Borings | <ul style="list-style-type: none"> Abandoned Wells Horizontal Pipeline/Well Screen Surface Water Sampling Location Residential Wells U of M Research Water Supply Well | <ul style="list-style-type: none"> Groundwater Water Use Prohibition Zone Expanded Prohibition Zone Area | <ul style="list-style-type: none"> Unit E or Deep Aquifer Plume (>85 ppb) Core & Evergreen Plume (>85 ppb) Western or Little Lake Area Plume (>85 ppb) Estimated Plume (>1 ppb)
-Depiction represents sampling locations that have detections of 1,4-dioxane greater than 1 part per billion (ppb) or had historical detections greater than 1 ppb. |
|--|--|--|---|

MAP PRODUCED BY:
Environmental Health Division
Department of Public Health
Washtenaw County, Michigan

SOURCES:
MIGDL
PALL/MDEQ Database
Washtenaw County GIS

PLOTTED: 06/15/2011 USER: MRG PLOT INFO: X:\Departments\Environ_Health\Projects\Pall Life Sciences\PLS-Plume_Summary_06092011.mxd