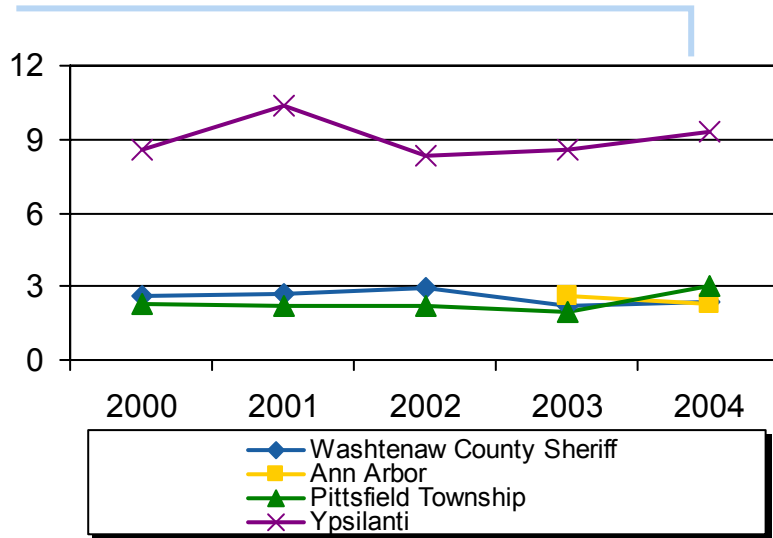


Violent Crime Rates (per 1,000) in Washtenaw County



Local Differences					
	2000	2001	2002	2003	2004
Washtenaw County Sheriff's Dept.*	2.6	2.7	2.9	2.2	2.4
Ann Arbor Police Dept.	2.6 **	3.1 **	2.6 **	2.6	2.3
Pittsfield Township Police Dept.	2.3	2.2	2.2	2.0	3.0
Ypsilanti Police Dept.	8.6	10.4	8.3	8.6	9.3

* The Sheriff's Department covers smaller townships 24-7 by contract (e.g. Dexter, Scio, Superior, etc.). It provides additional coverage for cities who do not have Police on duty 24-7.

**Ann Arbor Police Dept. (2003) – Due to changes in reporting practices, annexations, and/or incomplete data figures are not comparable to previous years' data.

What it is:

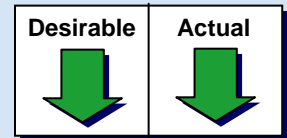
Rates of crime per 1,000 residents, as reported by the four police departments in Washtenaw County. Violent crime includes: murder, rape, aggravated assault and robbery.

Why it matters:

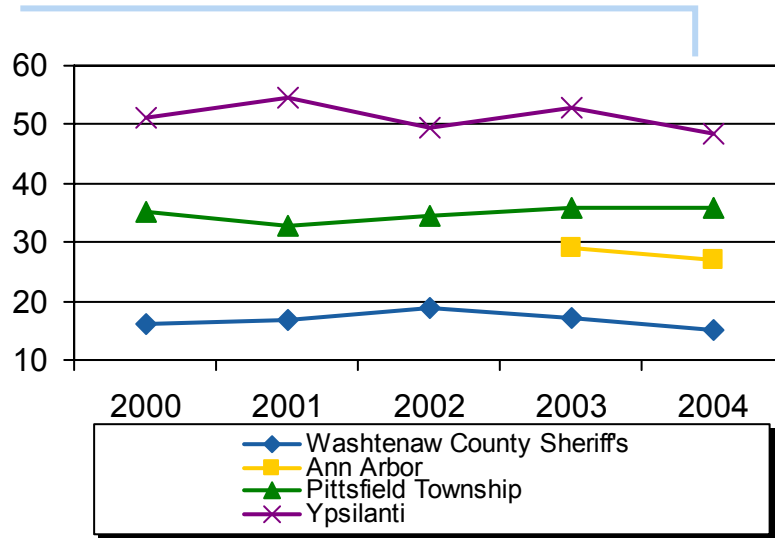
Crime rates influence people's decisions about where to live. Crime also has significant economic costs to businesses, government and taxpayers.

What it tells us:

Violent crime rates have remained relatively stable in Washtenaw County, although they have risen slightly in 2004 from 2003, in three of the four policing departments. Violent crime rates vary significantly in the county with the highest rates in Ypsilanti.



Nonviolent Crime Rates (per 1,000) in Washtenaw County



Local Differences					
	2000	2001	2002	2003	2004
Washtenaw County Sheriff's Dept.*	16.2	16.9	18.8	17.3	15.2
Ann Arbor Police Dept.	32.2 **	30.8 **	29.7 **	28.8	27.0
Pittsfield Township Police Dept.	35.3	32.9	34.5	36.0	35.7
Ypsilanti Police Dept.	51.2	54.7	49.4	52.7	48.3

* The Sheriff's Department covers smaller townships 24-7 by contract (e.g. Dexter, Scio, Superior, etc.). It provides additional coverage for cities who do not have Police on duty 24-7.

**Ann Arbor Police Dept. (2003) – Due to changes in reporting practices, annexations, and/or incomplete data figures are not comparable to previous years' data.

What it is:

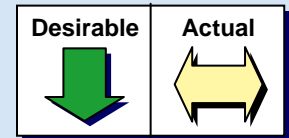
Rates of crime per 1,000 residents, as reported by the four police departments in Washtenaw County. Nonviolent crime includes burglary, larceny, motor vehicle theft and arson.

Why it matters:

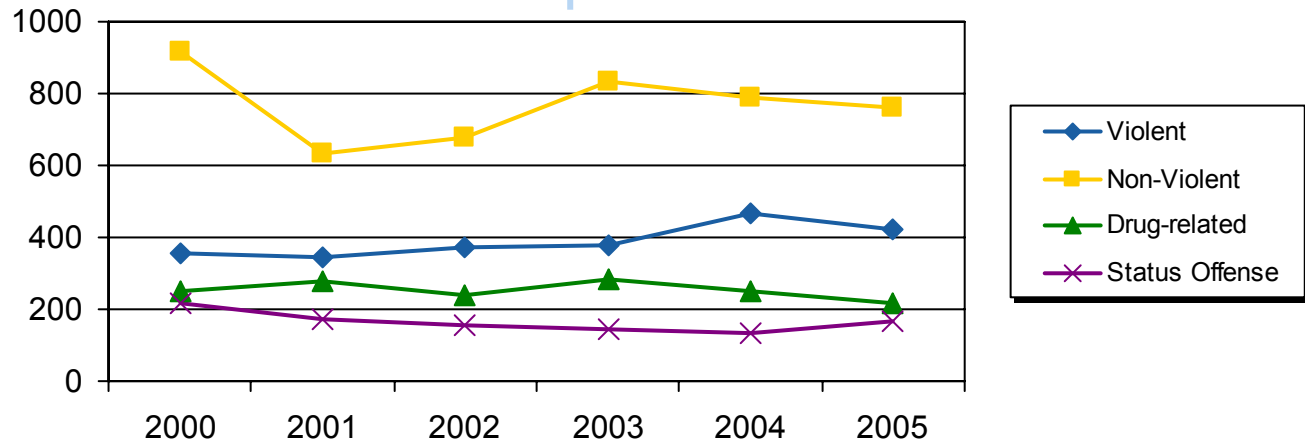
Crime rates influence people's decisions about where to live. Crime also has significant economic costs to businesses, government and taxpayers.

What it tells us:

Nonviolent crime rates have remained fairly steady, decreasing slightly in 2004 as reported by the Washtenaw County Sheriff's Department, Ypsilanti Police Department, and the Ann Arbor Police Department.



**Number of Crimes Committed by Juveniles 2000-2005
in Washtenaw County**



What it is:

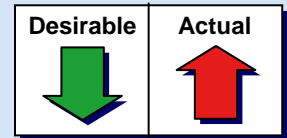
The number of juvenile crimes in several categories: violent, non-violent, drug-related and status offenses. Status offenses are offenses that are only illegal for a juvenile, including truancy, incorrigibility, runaway, and curfew violations.

Why it matters:

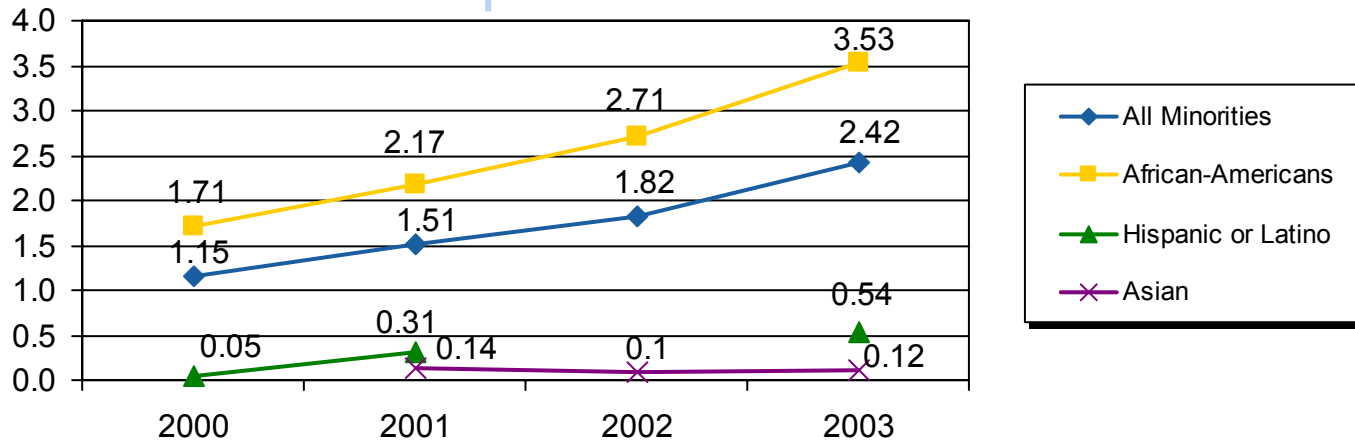
Increasing or decreasing levels of juvenile crime can be a warning signal of future increase in the adult crime rate. Crime also has significant economic costs to businesses, government, and taxpayers.

What it tells us:

After dipping between 2000-2001, non-violent crime increased through 2003 and has declined slightly to 2005. Drug-related offenses and status offenses remained steady 2000-2005, while violent crime increased slightly in 2004.



Relative Rate of Arrest of Juveniles from Different Racial & Ethnic Groups Compared with Caucasian Juveniles in Washtenaw County



What it is:

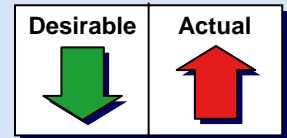
The Relative Rate Index of arrests for different racial/ethnic groups, as compared to Caucasian juveniles. For instance, the RRI rate of 3.53 shown for African-American juveniles in 2003 indicates that African-American juveniles were 3.5 times more likely to be arrested than Caucasian juveniles in 2003. Data has not yet been analyzed for 2004 and 2005.

Why it matters:

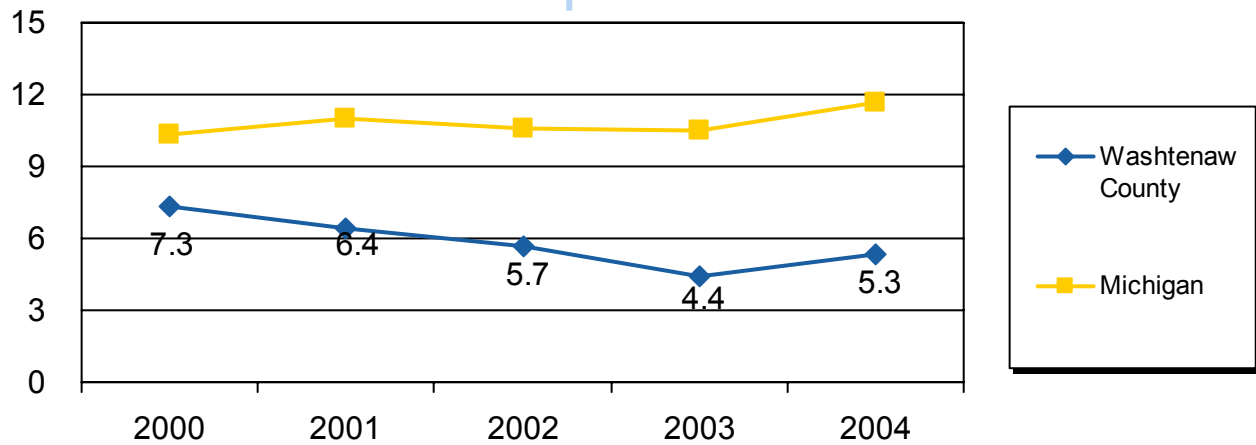
Racial disparities in the juvenile justice system indicates that the arresting, processing, detaining, adjudicating and imprisonment of youth is not race neutral and does not provide "Equal Justice Under the Law" for all.

What it tells us:

Racial disparities in juvenile arrests are increasing, in particular for African-American juveniles, Hispanic/Latino and Asian juveniles. There is not enough data to draw conclusions about other racial groups and ethnicities, so they are not shown on this graph.



Rates of Confirmed Cases of Child Abuse or Neglect (per 1,000)



What it is:

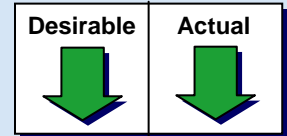
Confirmed victims of abuse or neglect in children birth to 17 after an investigation has occurred. The operational definitions of abuse and neglect can be found in the services manual for the Department of Human Services (formally FIA).

Why it matters:

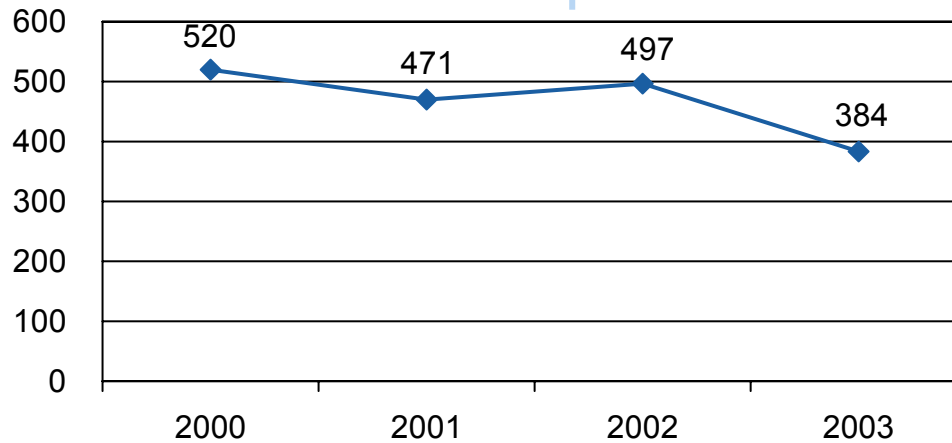
Children who are neglected or abused are at risk for developing mental health and academic problems. Rates of abuse and neglect increase during economic downturns.

What it tells us:

In Washtenaw County, child abuse and neglect rates decreased between 2000 to 2003, the same time that they remained steady at the state level. The rates rose in 2004 mirroring a state trend.



Domestic Violence Victim Rate (per 100,000) in Washtenaw County



What it is:

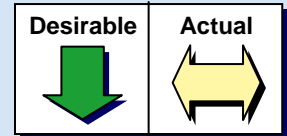
The number of confirmed cases of domestic violence in Washtenaw County per 100,000 adults. Domestic violence is physical, psychological, sexual or financial violence directed towards one's spouse, partner or cohabitant.

Why it matters:

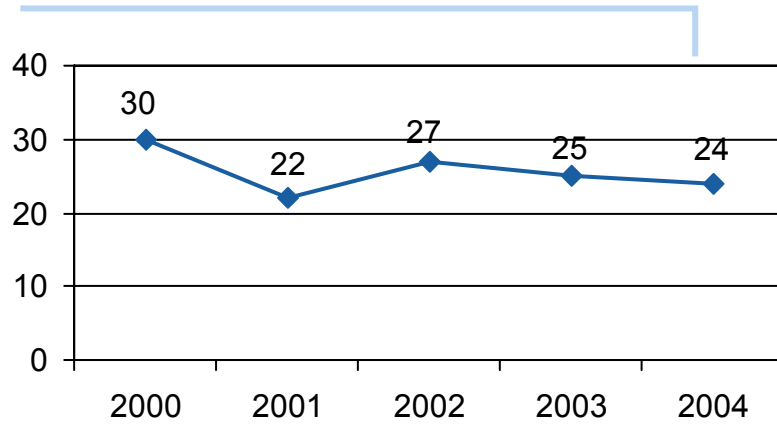
Domestic violence is a serious community health problem. Victims of abuse suffer physical and emotional injuries that require treatment. Also, it is an indicator of socio-economic health as it is correlated with downturns in the economy.

What it tells us:

Domestic violence rates have fallen slightly between 2000 and 2003.



Number of Hate Crimes in Washtenaw County



Local Differences					
	2000	2001	2002	2003	2004
Michigan	616	569	548	457	660
Washtenaw County	30	22	27	25	24
Ann Arbor	15	12	19	19	14
Chelsea	2	3	6	0	2
Milan	2	0	0	0	0
Pittsfield Township	1	2	0	0	0
Ypsilanti	8	3	0	4	4
Washtenaw County -Other	2	1	2	2	4

What it is:



Hate/Bias Crime is a criminal offense committed against a person or property which is motivated, in whole or in part, by the offender's bias against a race, religion, ethnic/national origin, sexual orientation or disability group.

Why it matters:

Hate crimes are an indicator of the tensions in the community due to ethnicity, racial, religious, sexual orientation or disability differences. They also are correlated with the diversity found in an area.

What it tells us:

Washtenaw County accounts for 3%-6% of hate crimes reported in Michigan, and such crimes have slightly decreased in the county. The majority of hate crimes reported do not involve intimidation/stalking, non-aggravated assault or damage to property. The majority of the hate crimes occur in college towns (Ann Arbor and Ypsilanti).

Desirable 	Actual 
---	--

What it is:

The rate of elder abuse and neglect in Washtenaw County. Domestic elder abuse refers to any of several forms of maltreatment or abuse of an older person by someone who has a special relationship with the elder (e.g. a spouse, a sibling, a child, a friend, or a caregiver in the older person's home or in the home of a caregiver). The Washtenaw County Blueprint for Aging estimates that, "extrapolating national experience to the local senior population (in 2000 there were over 35,000 residents in Washtenaw County over the age of 60), it is estimated that, on an annual basis, about 360 persons age 60+ in Washtenaw County experience abuse/ neglect in a domestic setting alone." However, there is no data currently being collected, and it is unclear how accurate this estimate is for Washtenaw County and whether the rate has been increasing or decreasing.

Why it matters:

As the population becomes older in the country and in Washtenaw County, the rate of elder abuse and neglect has the potential to increase as well. Elder abuse is even more difficult to detect than child abuse, since the social isolation of some elderly persons may increase both the risk of maltreatment itself and the difficulty of identifying that maltreatment.