

Health (Kids, Adults, Community Health):

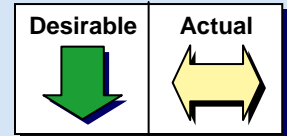
Highlights from the indicator data for health include:

- ◆ Infant death rates and low birth weights are higher for African American babies than for Caucasian babies and vary throughout the county.
- ◆ An increasing percentage of children are covered by public health plans.
- ◆ While the rate of teen pregnancy is dropping, there is still a rate of 31.7 per 1,000 females ages 15-19.
- ◆ The number of adults defined as “working poor” without health care insurance is rising in the county.
- ◆ The HIV incidence rate almost doubled between 2001 and 2004 (5.3 to 9.6).

All three groups surveyed ranked many aspects of health as some of the most important issues in Washtenaw County with the least adequate resources available. Adults without health insurance or affordable health care were consistently rated as major issues by all three groups (76%-94%). A slightly lower percent of respondents ranked affordable prescription medicine and affordable dental care as an issue. Community residents completing the written survey had a very different perception of dental care – 82% believed it was a major issue, and 70% believed resources were not adequate. Teen pregnancy was viewed as a major issue by 71% of residents (written), but not by the other two groups (29% and 39%). Children without health insurance and substance abuse were rated as major issues by most respondents (62%-80%). In contrast, only 12% of residents believed that infant mortality was a major issue, and 78% believed resources were adequate.

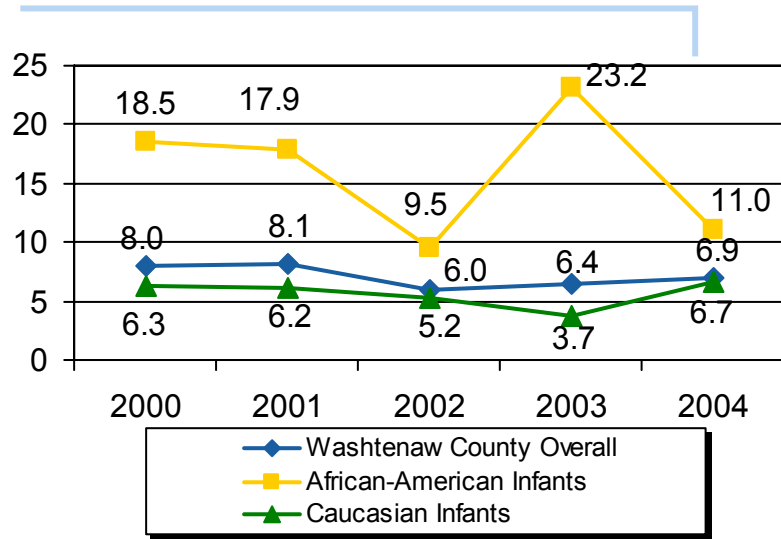
Healthy Kids:

Infant Death Rate



HEALTH

Infant Death Rate - Differences for African-American & Caucasian Infants in Washtenaw County



Local Differences - Infant Death Rate					
	1998-2000	1999-2001	2000-2002	2001-2003	2002-2004
Michigan	8.2	8.0	8.1	8.5	7.6
Washtenaw Co.*	6.6	7.8	7.3	6.8	6.4
Ann Arbor City*	7.4	8.6	7.0	6.3	4.7
Pittsfield Township*	No estimates because there were < 6 deaths				
Scio Township*	No estimates because there were < 6 deaths				
Ypsilanti City*	6.4	5.8	5.5	7.2	8.0
Ypsilanti Township*	10.8	20.9	17.0	11.6	8.4

*Estimated deaths from the Michigan Department of Community Health (per 1,000 live births) based on 3 year moving averages.

What it is:

Infant Death Rate is the number of infant deaths per 1,000 live births.

Why it matters:

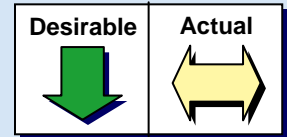
Infant mortality is a crucial measure of community physical and socio-economic health. It correlates with the performance of the region's health care intervention system and social support system for childbearing women.

What it tells us:

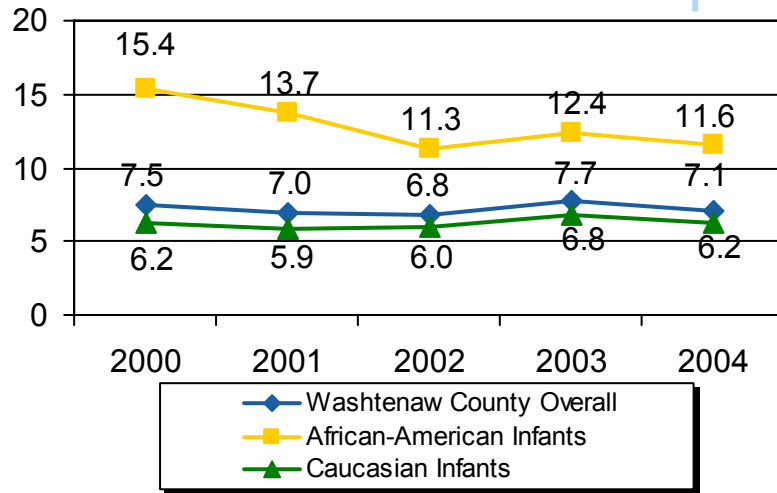
In Washtenaw County the infant death rate varies by race and by locality. The death rate for African-American infants is consistently higher than for Caucasian infants, though the amount of the difference varies by year. Specifically, Ypsilanti Township experienced a sharp increase in infant deaths in 2001, but the rate has fallen steadily since. Ann Arbor City has experienced a slight decline in infant deaths.

Healthy Kids:

Infant Low Birth Weight



Low Birth Weight Infants - Differences for African-American & Caucasian Infants



Local Differences in Percent of Low Birth Weight Infants (<5.5 lbs)					
	2000	2001	2002	2003	2004
Michigan	7.9	8.0	8.0	8.2	8.4
Washtenaw County	7.5	7.0	6.8	7.7	7.1
Ann Arbor City	7.9	8.1	7.8	7.8	7.4
Pittsfield Township	6.5	7.3	9.2	8.0	7.1
Scio Township	5.8	8.6	.8	10.6	3.8
Ypsilanti City	13.1	10.8	10.9	11.2	10.3
Ypsilanti Township	10.6	9.6	7.7	10.0	10.0

Michigan Resident Birth File, Vital Records & Health Data, MI Department of Community Health

What it is:

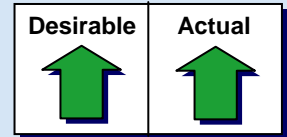
The percent of all births to children with low birth weight (<5.5lbs) or very low birth weight (3.3lbs) per 100 live births. Figures reflect only single births.

Why it matters:

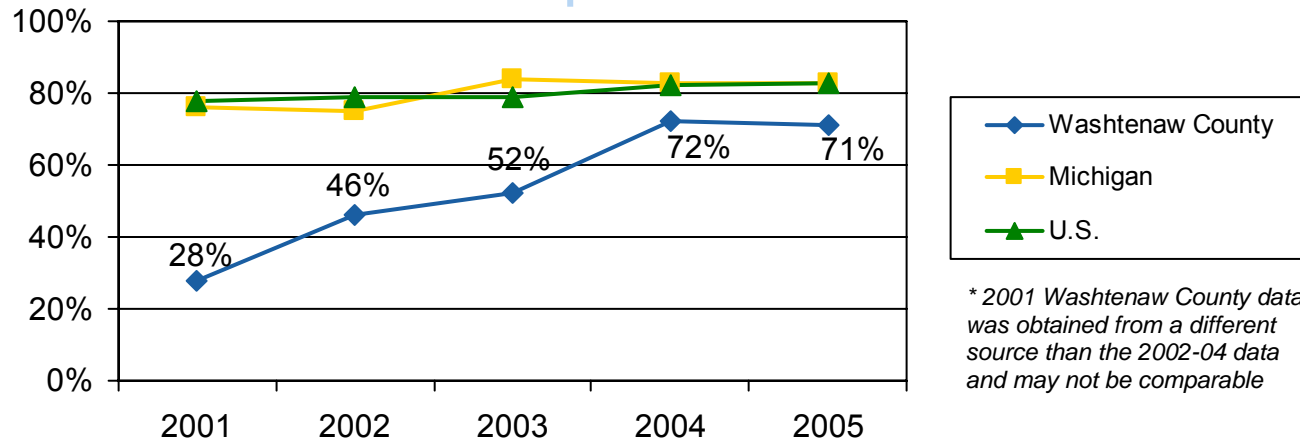
Low birth weight is reflective of quality and availability of prenatal care, and is associated with infant health problems for children who are very low birth weight.

What it tells us:

African-Americans have higher rates of low birth weight infants relative to Caucasians in Washtenaw County. Between 2000 and 2002 there was a marked decline in low birth weight African-American infants, which has been maintained between 2002 to 2004. Washtenaw County overall has a very slightly lower rate of low birth weight children than the state. Ypsilanti City and Township have a higher rate of low birth weight infants than the more affluent cities and townships in Washtenaw County.



Percent of Children (19-35 months) Who Are Fully Immunized



What it is:

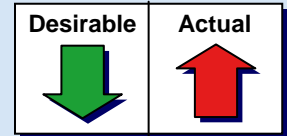
The percentage of children 19-35 months old considered fully immunized by the Michigan Childhood Immunization Registry (MCIR). A child is considered fully immunized after receiving four doses of DTaP, three does of Polio, three doses of Hib, one dose of MMR, and three doses of Hepatitis B.

Why it matters:

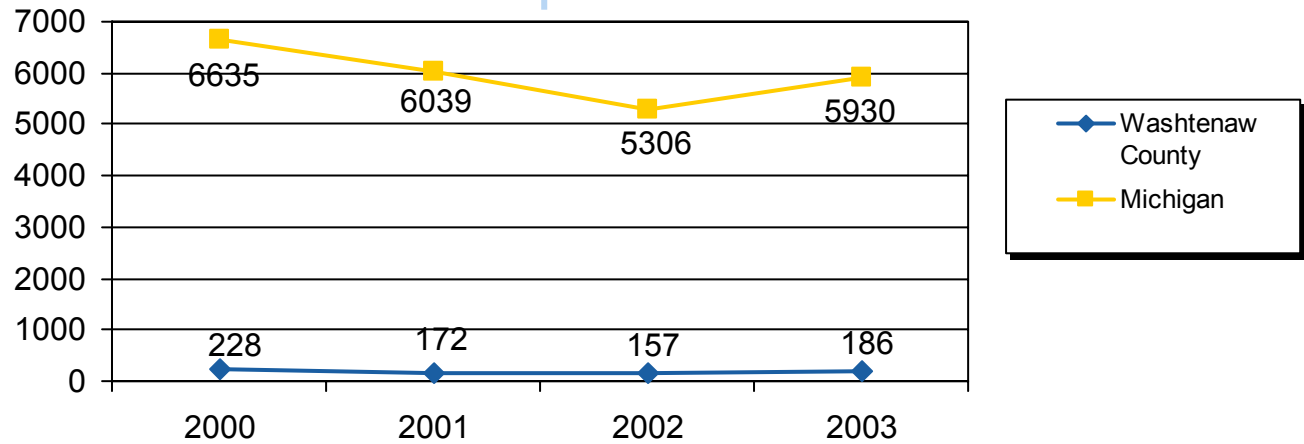
Immunization rates are an indicator of quality and availability of preventative health care in a community. Immunization is an important factor in reducing communicable disease in children and adults. Immunization protects children from the consequences of communicable diseases: brain damage, hearing loss, pneumonia, and death.

What it tells us:

Increasing number of children in Washtenaw County were immunized from 2001 to 2004. The 2005 rate is similar to the 2004 rate, though slightly lower than rates in Michigan and the U.S.



Preventable Hospitalizations for Asthma In Washtenaw County & Michigan



What it is:

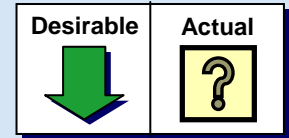
Preventable hospitalizations for conditions in which timely and effective ambulatory care can decrease hospitalization by preventing the onset of illness or condition, controlling acute episode of an illness or managing chronic disease or condition for children 18 years and under.

Why it matters:

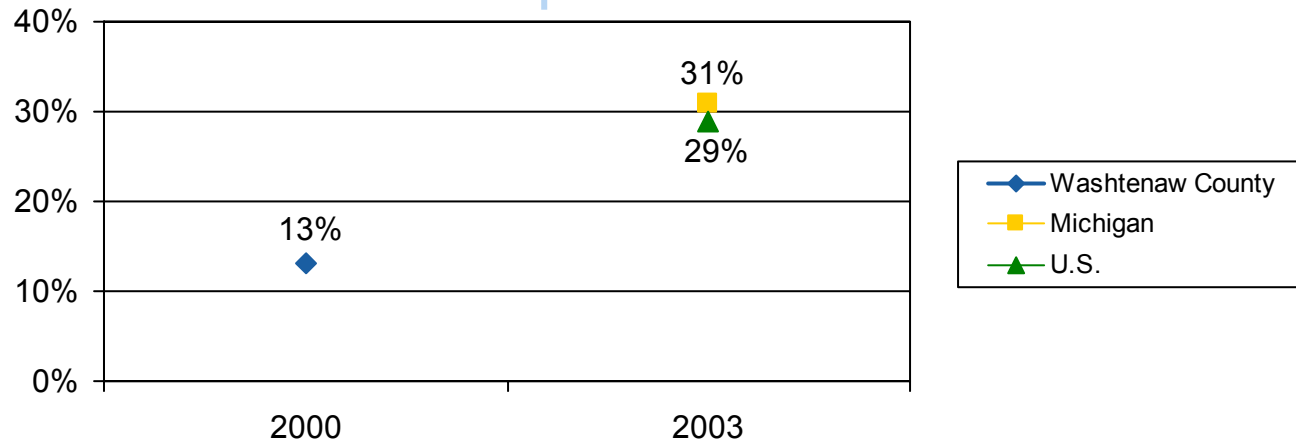
Asthma is an indicator of community health that is related to poor air quality and housing.

What it tells us:

Preventable hospitalizations due to asthma episodes in children have decreased overall from 2000 to 2002 in both Washtenaw County and in Michigan, but increased again from 2002 to 2003. Data from reported in the Washtenaw County Public Health HIP Survey in 2000 and 2005 found a decrease for children. The mean number of asthma episodes for children reported decreased from 3.0 to 1.6 between 2000 and 2005.



Percent of Overweight Children and Adolescents (6-17 years old in Washtenaw County; 10-17 years old in Michigan and the U.S.)



What it is:

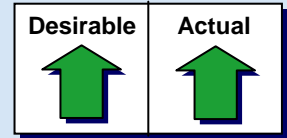
Proportion of children and adolescents aged 6 to 17 years in Washtenaw County who are overweight as reported on the HIP survey. Data from 2005 is not yet available. Michigan-level data and U.S.-level data are from a 2003 Survey of Children’s Health for children 10-17 years of age, and may not be comparable. Children with Body Mass Index (BMI) values at or above the 85th percentile of the sex-specific BMI growth charts for their age are categorized as overweight.

Why it matters:

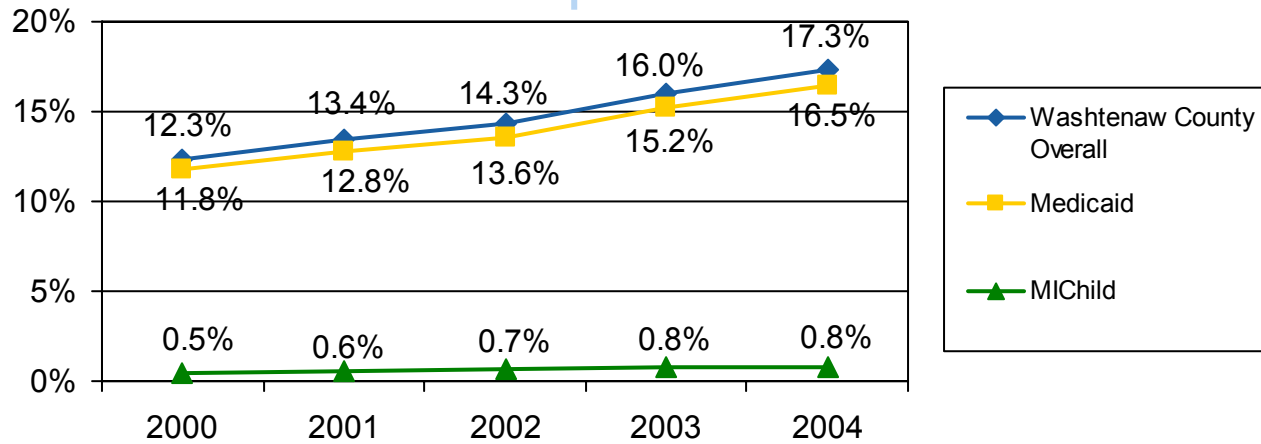
The percent of overweight children is an indicator of opportunities for physical activity and quality of nutrition. Overweight children are more likely to have health and social problems in childhood that can extend into adulthood.

What it tells us:

The proportion of overweight children and adolescents in Washtenaw County was 13% in 2000, and preliminary survey results suggest that this hasn’t changed significantly in 2005.



Percentage of Children 0-18 Covered by Public Health Plans in Washtenaw County



What it is:

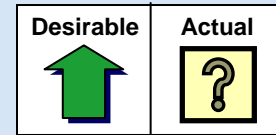
The percent of children in Washtenaw County who are covered by two public health plans - Medicaid and MICHild. Medicaid covers children 1-18 in families under 150% of poverty, and MICHild covers children 1-18 in families under 150-200% of poverty.

Why it matters:

An increase in health care coverage means that more children are receiving access to health care. However, an increasing percentage of children covered by public health plans can also indicate that private coverage is decreasing. Not only does the burden on public health expenses go up, but access to quality health care could potentially decrease because coverage is more limited in Medicaid or MICHild Health Plans.

What it tells us:

An increasing percentage of children are covered by public health plans. Census 2000 data indicates that 6.9% of children 0-17 were uninsured in Washtenaw County.

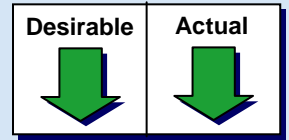


What it is:

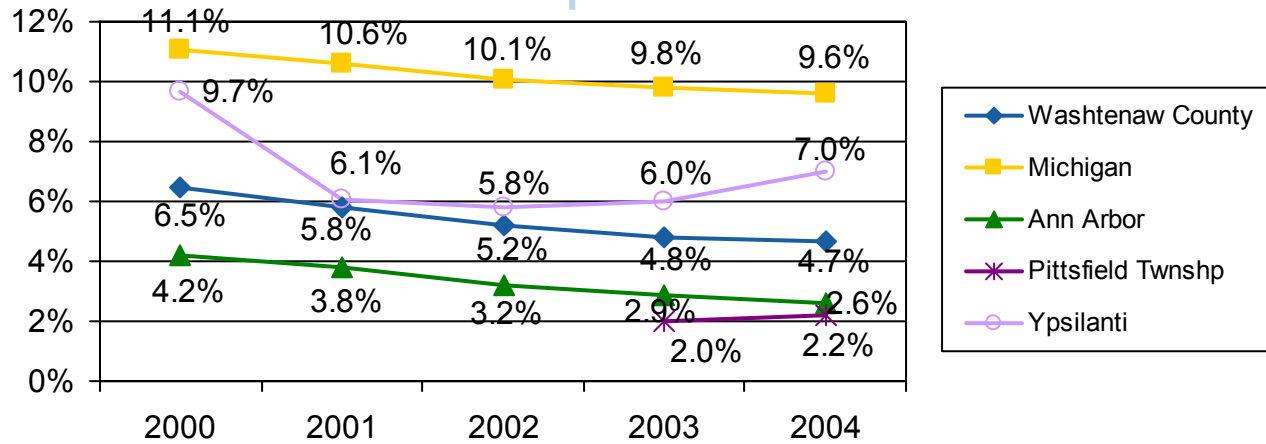
Percent of children who have one person who is their personal doctor or health care provider. There is no county-level data about the number of children who have a primary health care provider.

Why it matters:

Children with a primary care physician receive better quality health care. Children without a primary health care provider are more likely to receive late or no care for health problems, putting them at greater risk for hospitalization and developing chronic conditions.



Births to Teens (percent of total births)



What it is:

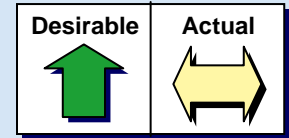
Percent of all infants born to an adolescent mother under age 20.

Why it matters:

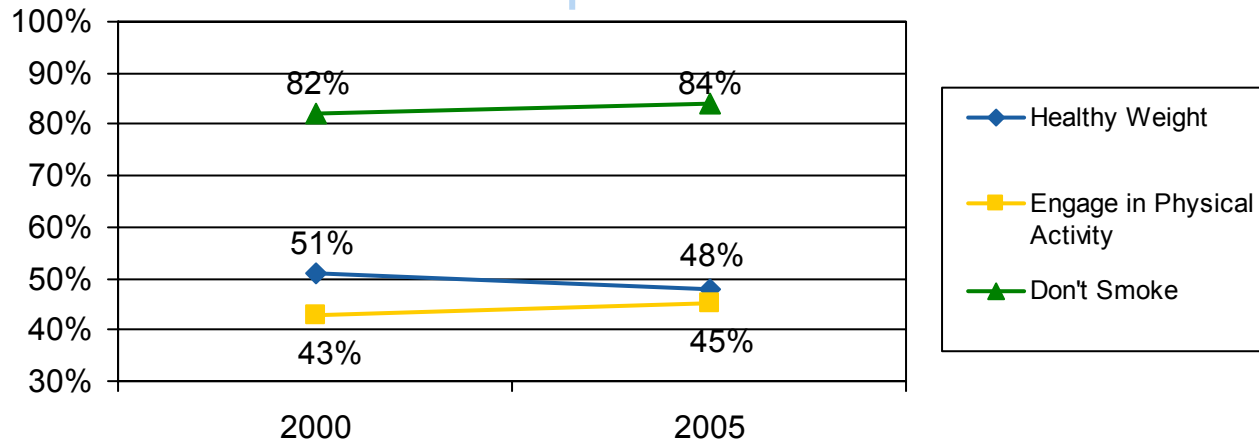
Teen childbearing is an indicator of a community's socio-economic health. Adolescent childbearing is correlated with lower educational attainment and engagement in the workforce.

What it tells us:

Washtenaw County has a lower percent of births to teen mothers than does Michigan. Trends in the county mirror national trends for lower percentages of birth to teens. There are regional differences - Ypsilanti has the highest percent of births to teen parents. There was a significant drop in births to teens in Ypsilanti between 2000 and 2002, but the percent of births increased in 2003-2004. Other areas showed a continued decrease.



Percent of adults maintaining a healthy weight, engaging in physical activity, and not smoking in Washtenaw County



What it is:

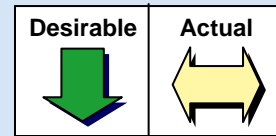
Indicators of adult healthy behaviors, including: maintaining a healthy weight, engaging in moderate physical activity at least 5-7 days a week, and not smoking. The percent of adults engaging in these healthy behaviors are taken from the Washtenaw County's bi-decennial Health Improvement Program (HIP) survey.

Why it matters:

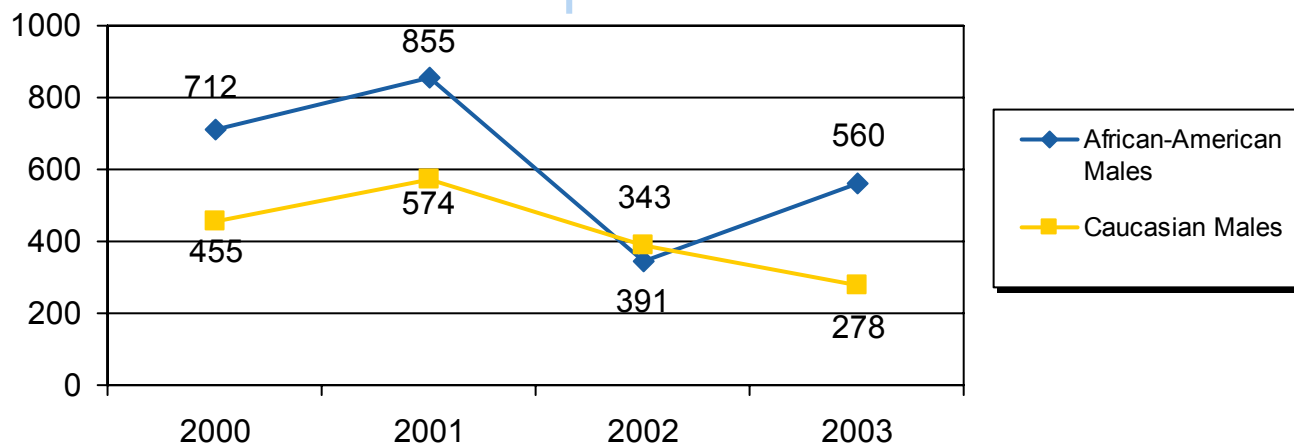
Adults who engage in healthy behaviors are much less likely to develop chronic diseases or die at an early age.

What it tells us:

The number of adults in Washtenaw County who are at a healthy weight has decreased slightly. However, the number of adults engaging in physical activity has increased slightly, as have the numbers of adults not smoking.



Years of Potential Life Lost (YPLL) Rate (per 100,000) for African-American and Caucasian Males in Washtenaw County



What it is:

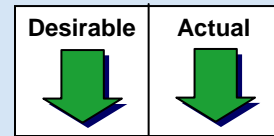
The total number of life years lost per 100,000 men in Washtenaw County owing to premature death from heart disease.

Why it matters:

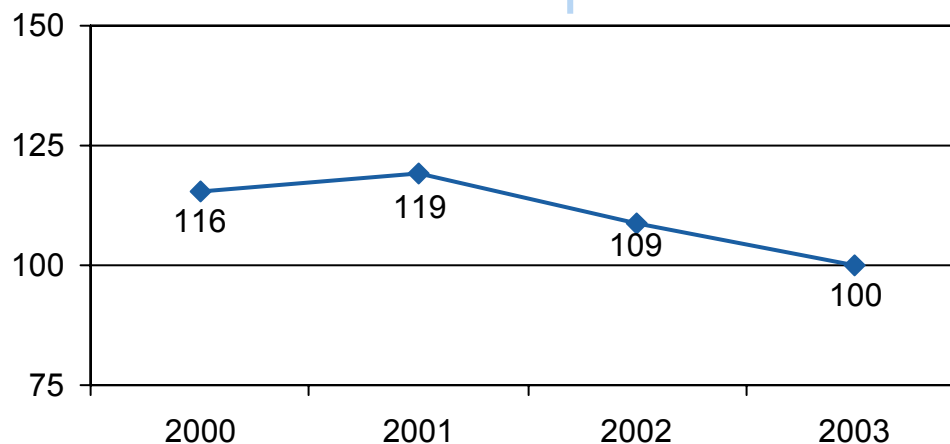
Heart disease is an important indicator of health. It is related to a number of poor health outcomes and increases an individual's chances of an early death.

What it tells us:

In general, African-American males have a higher rate of heart disease than Caucasian males. Rates among Caucasian and African-American males decreased steadily from 2000 to 2002. After 2002, the Caucasian rates continued to drop, but there was an increase in rates for African-American males.



Years of Potential Life Lost (YPLL) Rate (per 100,000) due to Breast Cancer in Washtenaw County



What it is:

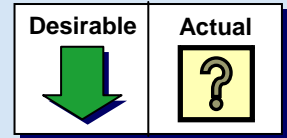
The total number of life years lost per 100,000 women for due to breast cancer in the county.

Why it matters:

Breast cancer survival rates are an indicator of the quality of health care available in a location both in terms of preventative care and treatment for advanced disease.

What it tells us:

The years of life lost to breast cancer is decreasing in Washtenaw County. This could be the result of earlier diagnosis and better treatments.



Percent of Individuals without Health Care Insurance in Washtenaw County, 2000-2005

No Data for 2005

Total Population Uninsured by Poverty Level in 2000			
	Washtenaw County	Michigan	U.S.
Below Poverty	29%	25%	31%
100-199% of Poverty	25%	17%	23%
200% of Poverty	8%	7%	10%
All Income Groups	11%	11%	15%

Data from The Lewin Group using the Current Population Survey (March Supplement-2000-2002- 3-year pool data) and 2000 Census

What it is:

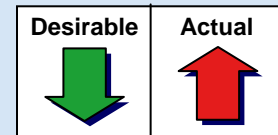
The percent of adults who do not have public or private health insurance. There is no data for all adults 18 and over in Washtenaw County to show if this has increased or decreased from 2000 to 2005. However, a survey conducted by the Washtenaw County Health Improvement Plan in 2000 and 2005 found that the percent of 'working poor' who reported not having health care insurance increased from 9.5% in 2000 to 13.1% in 2005.

Why it matters:

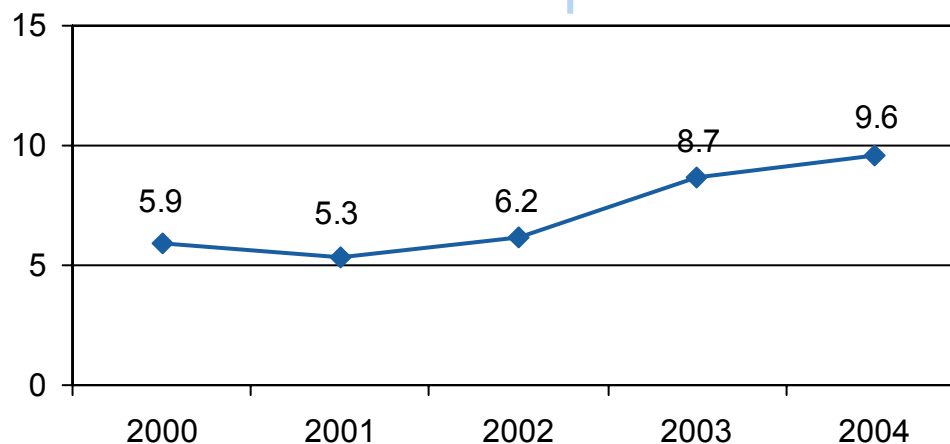
Health insurance is critical for preventative health. Lack of insurance is related to lower health status, increased use of emergency rooms for basic care, higher health care costs and unnecessary deaths.

What it tells us:

Data from 2000 shows that people in Washtenaw County making 199% of the poverty level or below are more than three times as likely to be uninsured as those making 200% of the poverty level or above. This rate is quite similar to Michigan's.



HIV Incidence Rates in Washtenaw County



What it is:

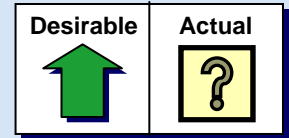
Rate of HIV infection per 100,000 population.

Why it matters:

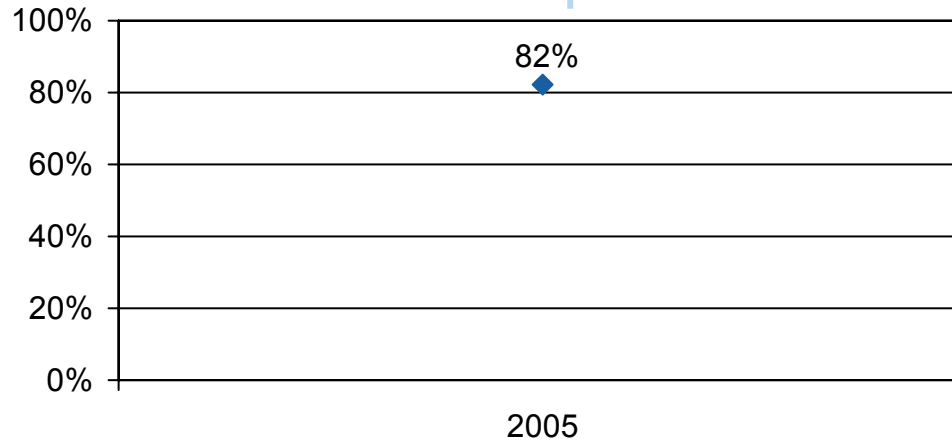
HIV infection is a public health concern and it places a large burden on the health care system and on an individual's quality of life and life expectancy.

What it tells us:

HIV incidence rates are increasing in Washtenaw County. The rate has almost doubled between 2001 and 2004 (from 5.3 to 9.6).



Adults with a Primary Care Physician in Washtenaw County



What it is:



Percent of adult HIP 2005 Survey respondents who said 'yes' to the following question - "Do you have any one person you think of as your personal doctor or health care provider?"

Why it matters:

Having a primary health care provider is an indicator of the quality of medical care an individual receives. Individuals with a primary physician are more likely to receive regular preventative care and better management of chronic conditions.

What it tells us:

This data will be collected again by the Washtenaw County Health Improvement plan in 2010 to determine if this indicator is moving in a positive or negative direction.

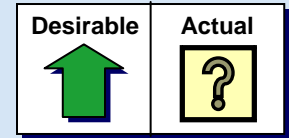
Desirable	Actual
	

What it is:

Years of Potential Life Lost (YPLL) due to diabetes. The Washtenaw County Health Improvement Plan has some data available for some groups in some years, but there is no consistent data available for each year.

Why it matters:

Diabetes is an important health indicator because it is related to a number of health issues including obesity, hypertension, and blindness. Also, it is a chronic disease which puts stress on the medical system.

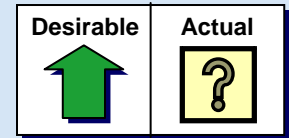


What it is:

Percent of the county population that has access to affordable treatment for substance abuse. Substance abuse services coverage can be limited by some insurances, and adequate services may not be available.

Why it matters:

Substance abuse has negative public health, economic, and personal impacts on the community. It is not currently known how much access county residents have to appropriate treatment for substance abuse issues.



What it is:

Percent of the county population that has access to affordable mental health services. The numbers of people accessing Community Mental Health services each year is available, but does not indicate what percentage of the county needs mental health services but cannot access them due to being ineligible for coverage from their private health insurance or Community Mental Health. Coverage that is provided may also not be affordable or a good fit with the services needed by an individual.

Why it matters:

Good mental health is important to physical health and the ability to pursue employment and education. However, mental health service coverage is limited in some private and public health plans.