



Jail Health

Reforming the system

Working Session
Feb 17, 2005



Agenda

- I. Review of jail medical services delivery
- II. Progress to date
- III. Proposed fee policy
- IV. Current and future work



How is health care delivered?



Physical Health Care

Contract with outside Vendor for Physical Health (Secure Care)

- Primary care
- Access to Specialty and Tertiary care
- Emergency care
- Medication distribution

Key Drivers: Number of inmates, wellness of inmates, requests for care



Physical Health Care

Services provided by Public Health

- Weekly counseling and testing services for HIV, Hepatitis B, Hepatitis C, and syphilis.
- Referral services to Washtenaw County Public Health for Hepatitis B vaccine.
- Follow-up for any cases of reportable communicable disease.

Mental Health Care

Contract with CSTS for Selected Mental Health Services

- Psychiatric evaluation and treatment
- Psychotropic medication ordering and management
- Suicide evaluation
- Suicide watch
- Planning and coordination of post-release treatment for CSTS clients
- Mental Health Diversion (funded by WCHO)

Key Drivers: Number of inmates, wellness of inmates, requests for care



Mental Health Care

As part of Jail Programming, Sheriff's Department provides selected inmate mental health services

- Short-term therapy
- Mental health assessments
- Anger management, cognitive behavioral groups
- Refer to CSTS for psychiatric needs



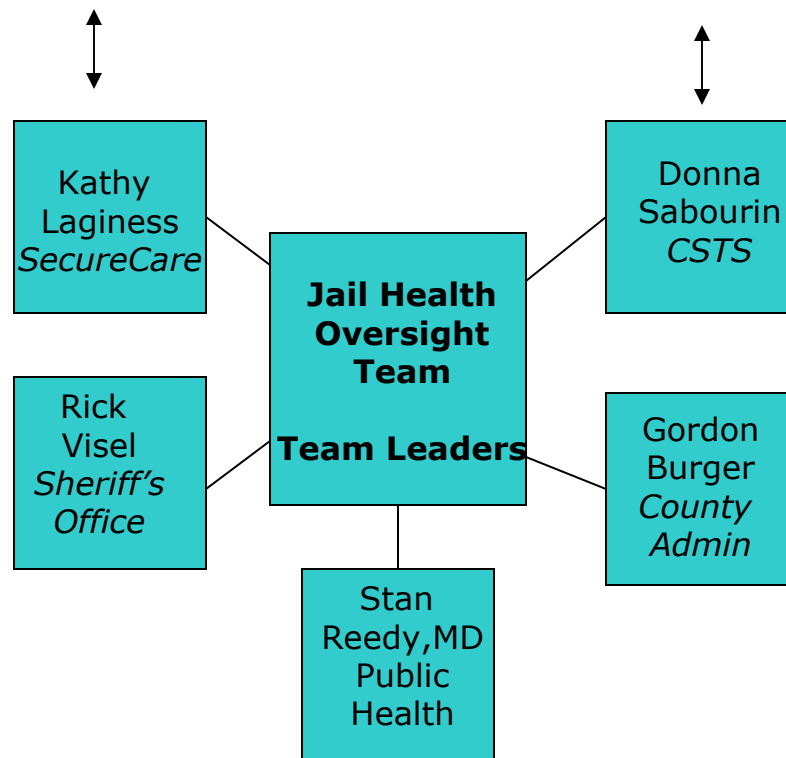
Operational Changes Made

- Contract with Blue Cross for claims administration and coordination of benefits
- Internal review committee for psychiatric referrals
- Development of a sample and voucher program for psychotropic medications
- Operational modifications to better manage liability

Jail Health Oversight Team

Medical Director

Mental Health Director



Accountability for Inmate Health Services

Executive Committee duties:

- Identify trends, emerging issues and desired outcomes related to inmate health
- Assign responsibility for activities, under a coordinated effort
- Exercise accountability for objectives, outcomes and progress
- Recommend policies procedures, and resource allocation
- Provide annual report to Sheriff, County Administrator, CJCC and County Commission



Accomplishments

- Mission Statement, Vision and Core Values shared by all participants
- Decision-making algorithm for evaluating inmate health policies and operations, and
- Review of all contracts for inmate physical and mental health services, identification of opportunities for improvement.
- Identification of Medicaid and CSTS clients upon intake



Accomplishments

- Grievance mechanism for inmate mental health concerns
- Orientation tool for new CSTS staff delivering services in the jail
- Approved 2005 Quality Improvement plans for CSTS and SecureCare
- Improved coordination of psychiatric and medical resources



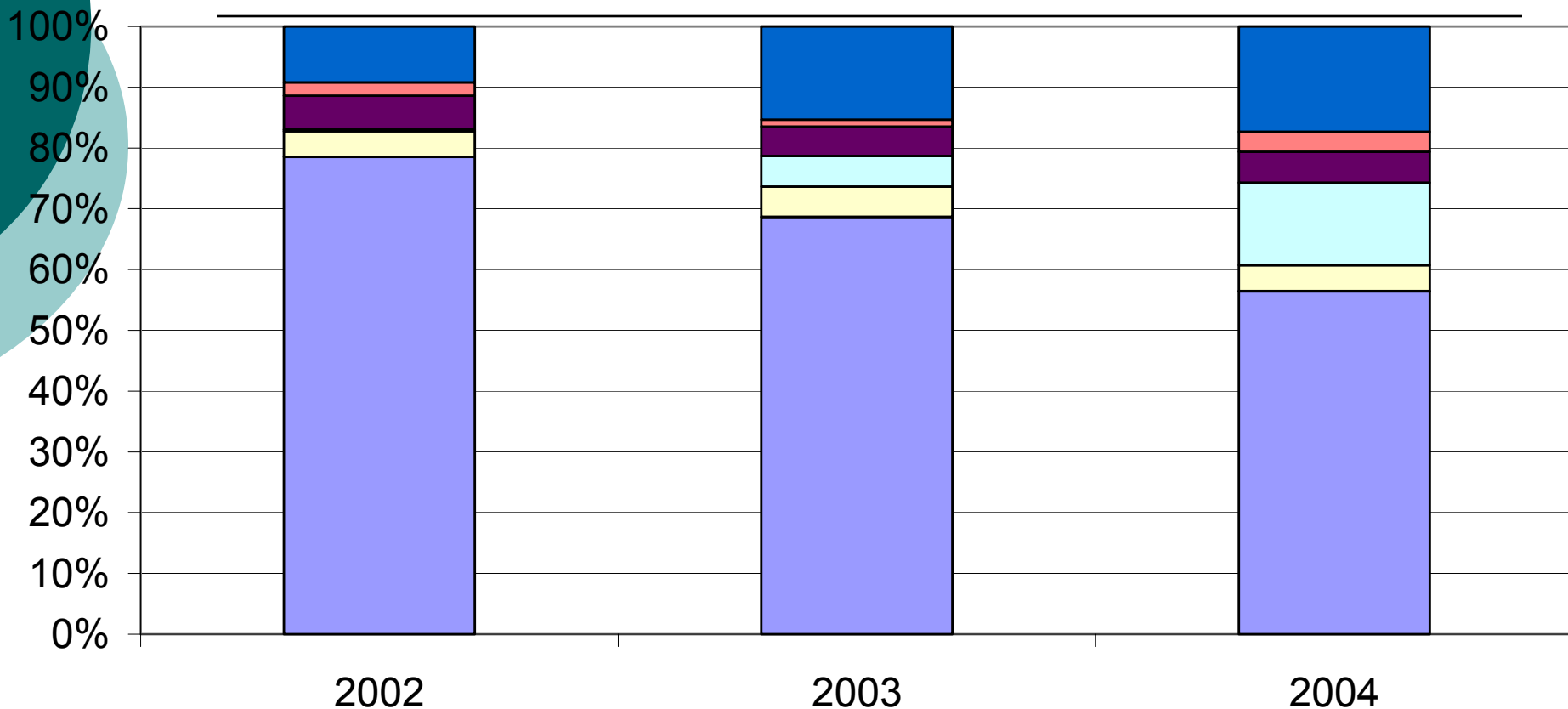
Accomplishments

- Developed data tools to track trends in all aspects of inmate physical and mental health service
 - service utilization
 - adequacy of resources to meet service demands
 - service costs
 - health care costs as component of total jail cost
 - transport and guarding costs
 - infectious disease
 - suicide precaution and drug/alcohol withdrawal trends
 - psychotropic medication cost and savings from voucher/sample program

Total Medical Costs

	2002	2003	2004
Medical On-Site	\$1,374,219	\$1,426,329	\$1,150,443
Mental Health*	\$57,370	\$104,197	\$86,353
Jail mental health staff	\$97,855	\$100,882	\$104,002
Medical Off-Site	\$3,657	\$103,981	\$276,731
Transport expense	\$38,064	\$23,105	\$66,696
Guarding expense	\$161,505	\$318,958	\$352,993
Total	\$1,732,671	\$2,077,453	\$2,037,218

Type of Inmate Health Cost as Percent of Total Health Costs



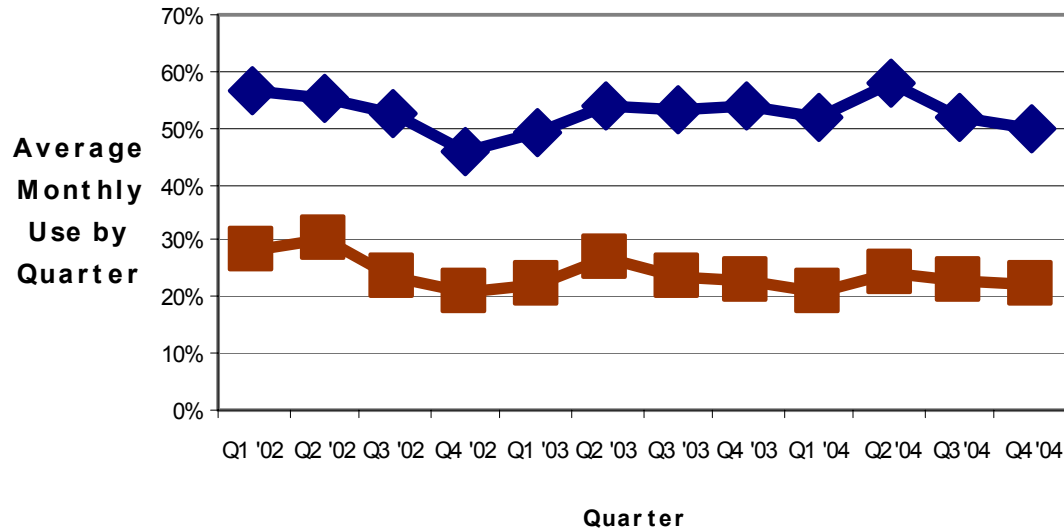


Medical Costs

	2002	2003	2004
Medical Costs as % of Total	15.2%	17.3%	15.8%
Health cost / inmate / day	\$14.09	\$16.55	\$15.72

Psychotropic Medication Costs

**Washtenaw County Jail
Quarterly Utilization Trends:
Percentage of Inmates Using Prescription and Psychotropic Medication
2002 - 2004**



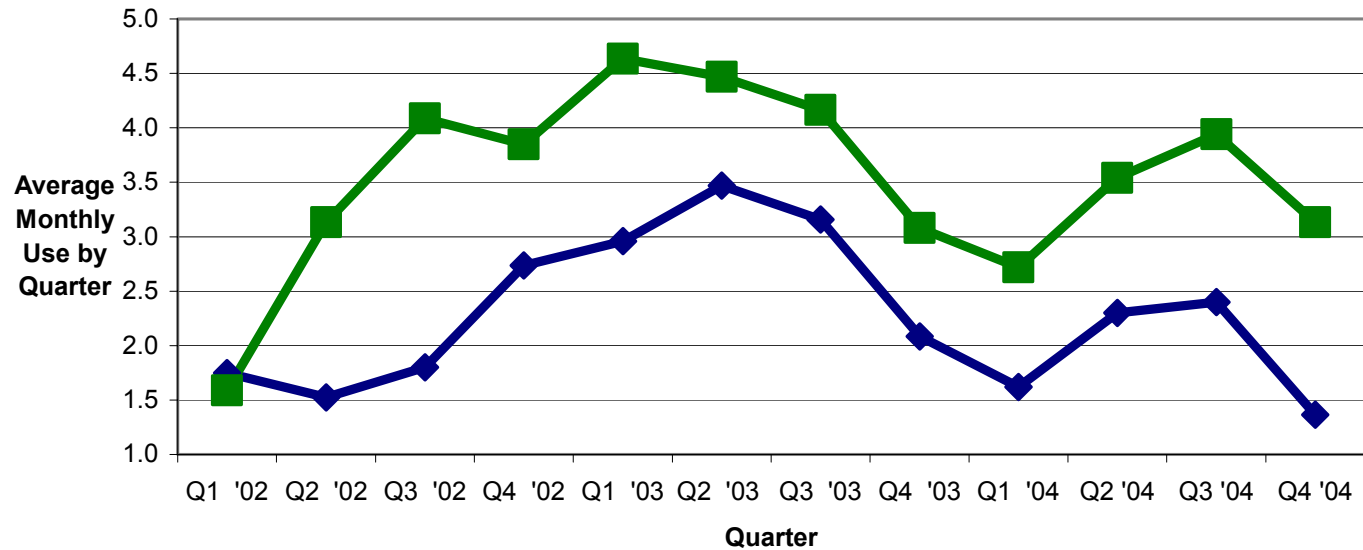
◆ % on RX meds

■ % on Psychotropic meds

This chart illustrates that psychotropic drug use has fallen by about one third since early 2002, but still remains consistently high, with use by at least 20% of inmates. Consistently, at least 40% of inmates using prescription drugs are using psychotropics.

Inmate Requests & Visits

Washtenaw County Jail
Quarterly Utilization Trends :
Health Kites and Nursing Clinic Visits Per Inmate
2002 - 2004



"Health Kite" is a request by an inmate to be scheduled for a nursing clinic visit. Nurses screen kites for appropriateness.

"Nursing Clinic Visit" may be in response to a Health Kite or for nursing assessments, wound care, etc. as determined necessary by the nursing staff or physician.

◆ kites/inmate ■ Nursing Clinic Visits/inmate



Proposed fee policy

- Purpose is to reduce the number of unnecessary health care visits (cost management)
- Consistent with current practices and standards
- Will not restrict necessary health care regardless of ability to pay



Current projects

- Proposed policy to charge inmates for accessing health services
- Development of guidelines for screening inmates who seek psychiatric services



Current Projects

- Identifying resources from Washtenaw County Public Health for maternal support services for pregnant inmates
- Identifying resources from Washtenaw County Public Health for HIV / STD needs
- Referring inmates to Washtenaw Health Plan for post-release health care



Future Projects

- Develop comprehensive data to track incidence/prevalence of inmates who need mental health services and who need substance abuse treatment
- Evaluate access to inpatient psychiatric resources
- Develop and implement a pilot project to conduct mental health assessments on selected inmates, assess resource needs and develop policy recommendations



Future Projects

- Reevaluate jail's use of internal and contracted staff to deliver inmate mental health services
- Review emerging standards from various accrediting agencies, and recommend targets for Washtenaw County Jail.
- Providing input into jail service and physical plant design process