



Jail Health

Working Session
June 3, 2004



Agenda

- I. How is health care delivered?
- II. Evaluation of current system
- III. Three Policy Issues
- IV. Space Considerations



How is health care delivered?



Physical Health Care

Contract with outside Vendor for Physical Health (Secure Care)

- Primary care
- Access to Specialty and Tertiary care
- Emergency care
- Medication distribution

Key Drivers: Number of inmates, wellness of inmates, requests for care

Mental Health Care

Contract with CSTS for Selected Mental Health Services

- Psychiatric evaluation and treatment
- Psychotropic medication ordering and management
- Suicide evaluation
- Suicide watch
- Planning and coordination of post-release treatment for CSTS clients
- Mental Health Diversion (funded by WCHO)

Key Drivers: Number of inmates, wellness of inmates, requests for care



Mental Health Care

As part of Jail Programming, Sheriff's Department provides selected inmate mental health services

- Short-term therapy
- Mental health assessments
- Anger management, cognitive behavioral groups
- Refer to CSTS for psychiatric needs

How does the Jail Deliver Health Care?

Physical Health Care (2003)

- Intake screenings -----8,417
- Health assessments ----- 1,711
- Hospital admissions ----- 53
- ER visits ----- 39

Mental Health Care (annualized)

- Initial suicide evaluation -----364
- Counseling Sessions -----709

- Inmates in detox (1st quarter of 2004)--78

- Driving Factor- Number of inmates, wellness, requests



Evaluation of Current System



Jail Health Evaluation 2003-04

- SecureCare contract expires 12/04
- Health service interface with jail facility re-design
- Cost increase trends in psychotropic meds, off-site services, liability
- Changing nature of jail population

Cost of Health Care Delivery

	<u>2001</u>	<u>2002</u>	<u>2003</u>
Physical (SecureCare)	1,095,389	1,125,309	1,224,454
Mental (CSTS)	66,665	75,029	81,656
Prescriptions:			
Psychotropics	174,393	144,064	103,379
Other	93,410	104,322	95,427
Outside providers & BC/BS charges	10,893	3,759	104,206
Total	1,440,750	1,452,483	1,609,122

Process

Secured HMA to evaluate Washtenaw County Jail's inmate Health Services.

- Are health services delivered in an appropriate and cost-effective manner?
- Does Washtenaw County provide the right amount of health care to inmates?
- What can be improved and how?
- How should RFPs and vendor contracts be structured to maximize value and contract performance?



Operational Changes Made

- Contract with Blue Cross for claims administration and coordination of benefits
- Internal review committee for psychiatric referrals
- Development of a sample and voucher program for psychotropic medications
- Operational modifications to better manage liability



HMA 's General Findings

“While Washtenaw County consistently delivers high quality health services to inmates, there are administrative, operational and policy issues that offer the opportunity to reduce risk and expense and/or increase quality and accountability”



Policy Issues



Three Key Policy Issues

for Jail Health Services

- Who is accountable for inmate health services?
- Is the jail delivering the right level of care to inmates?
- How should Washtenaw County provide jail health services?



Who is Accountable for Inmate Health Services at the Washtenaw County Jail?

Accountability for Inmate Health Services

- Provision of health care is a County responsibility and Administrator is accountable
- Multiple agencies and contractors involved in that provision

Parties:

Sheriff's Office
County Administration
CSTS and WCHO
SecureCare
Public Health

Issues:

Service delivery
Quality of Care
Risk Management
Accreditation
Inmates with mental health needs
Safety and security
Substance Abuse
Communicable disease
Contracts for off-site care



Accountability for Inmate Health Services

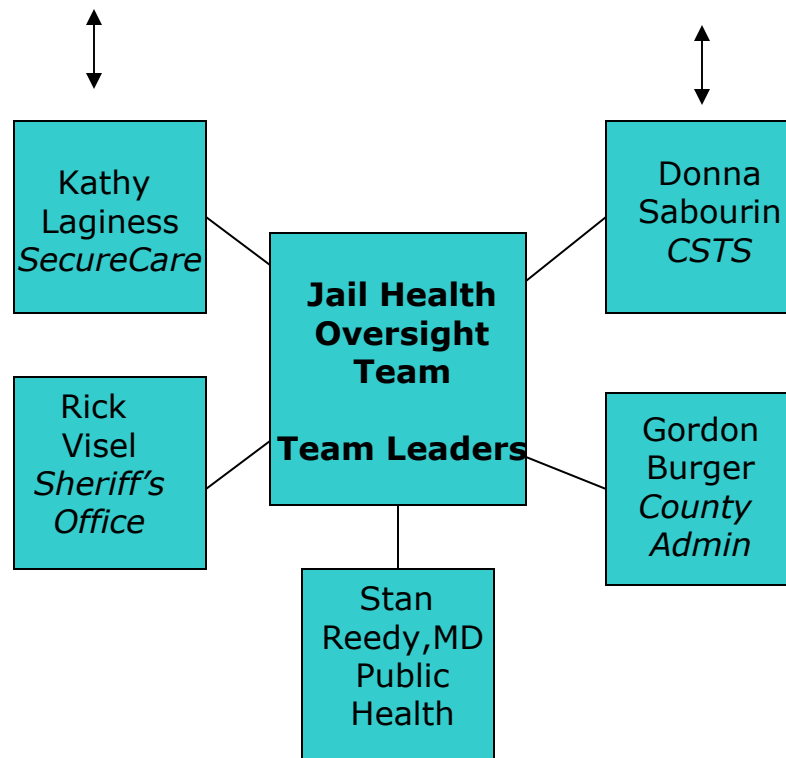
Recommendation: Create a Jail Health Oversight Team

- Single vehicle that engages multiple governmental units and contractors
- Coordinates comprehensive oversight of jail health issues with other Corrections issues and activities
- Taps expertise of contractors into problem-solving process
- Adds Public Health Department involvement

Jail Health Oversight Team

Medical Director

Mental Health Director



Accountability for Inmate Health Services

Executive Committee duties:

- Identify trends, emerging issues and desired outcomes related to inmate health
- Assign responsibility for activities, under a coordinated effort
- Exercise accountability for objectives, outcomes and progress
- Recommend policies procedures, and resource allocation
- Provide annual report to Sheriff, County Administrator, CJCC and County Commission



Is the jail delivering the right level
of care to inmates?

Is the Jail delivering the right amount of care to inmates?

- Mandated care includes:
 - Right to access to care
 - Right to care that is ordered
 - Right to a professional medical judgment
- National Commission of Correctional Health Care
 - 1996 Standards: Washtenaw County is among only 5-7% of jails that meet this standard
 - 2003 Standards: Wait to adopt these standards, which can be very costly and as yet not well interpreted

Is the jail delivering the right amount of care to inmates?

Policy issues to consider:

- **Quality Assurance** – key element in a defensible system that provides appropriate services
- **Policy Apparatus** – manages competing interests (budget, clinical decisions, risk, etc.)

Is the jail delivering the right amount of care to inmates?

Recommendations:

- A. Regularly consider care delivery alternatives in use in other jails
- B. Implement comprehensive mental health assessment of selected inmates
- C. Develop policies and procedures to treat mental health and substance abuse and manage psychotropic drug use in *explicit inmate groups*:
 - Current CSTS clients
 - Probable CSTS clients (at release)
 - Non-CSTS clients with acute mental health needs
 - Non-CSTS clients who are “worried well”

Is the jail delivering the right amount of care to inmates?

Recommendations (con't):

- D. Charge Jail Health Oversight Team with review and approval of all quality improvement plans and QA activities, and with integration of all QA/QI activities with other inmate health policies/strategies.
- E. Charge Jail Health Oversight Team to develop integrated, comprehensive data reporting on use, cost and trends in inmate health services
- F. Charge Jail Health Oversight Team with annual policy report to the Sheriff's Department, County Administration, CJCC and the County Commissioners.



How Should Washtenaw County Provide Jail Health Services?

Physical Health Services Delivery

Recommendations:

- Continue to contract with an external vendor for delivery of physical health and dental services.
- Extend Securecare contract for 2005
- Authorize Administrator to negotiate for addition extension until impact of new jail design is realized
- Weight bids heavily for experience with correctional health
- Build appropriate financial incentives into contract ensure appropriate use of off-site health services
- Require that contractor participate in Jail Health Oversight Team
- Require comprehensive submission of inmate health utilization, cost, and trend data



Mental Health Services Delivery

Recommendations (con't):

- Continue to contract with CSTS for delivery of mental health services.
- Enhance policy and administrative structures to enable better management of inmates who are or will be clients of the public mental health system
- Assure that contracting process addresses capacity of contractor to treatment all categories of inmates with mental health needs
- Require that contractor participate in Jail Health Oversight Team
- Require comprehensive submission of inmate health utilization, cost, and trend data



How should Washtenaw County Jail Deliver Health Services?

Recommendations (con't):

- Pursue a strengthened relationship between the jail and Washtenaw County Public Health, in order to build capacity to address potential and evolving environmental/public health concerns



Space Considerations



Jail Health Space Considerations

- Health Care is 24/7
- Transport of inmates for medical services within the jail
- Transport and supervision of inmates for services outside the jail
- Detoxification
- Suicide watch
- Distribution of medications
- Mental Health assessments
- Separate facilities for Mental Health care?