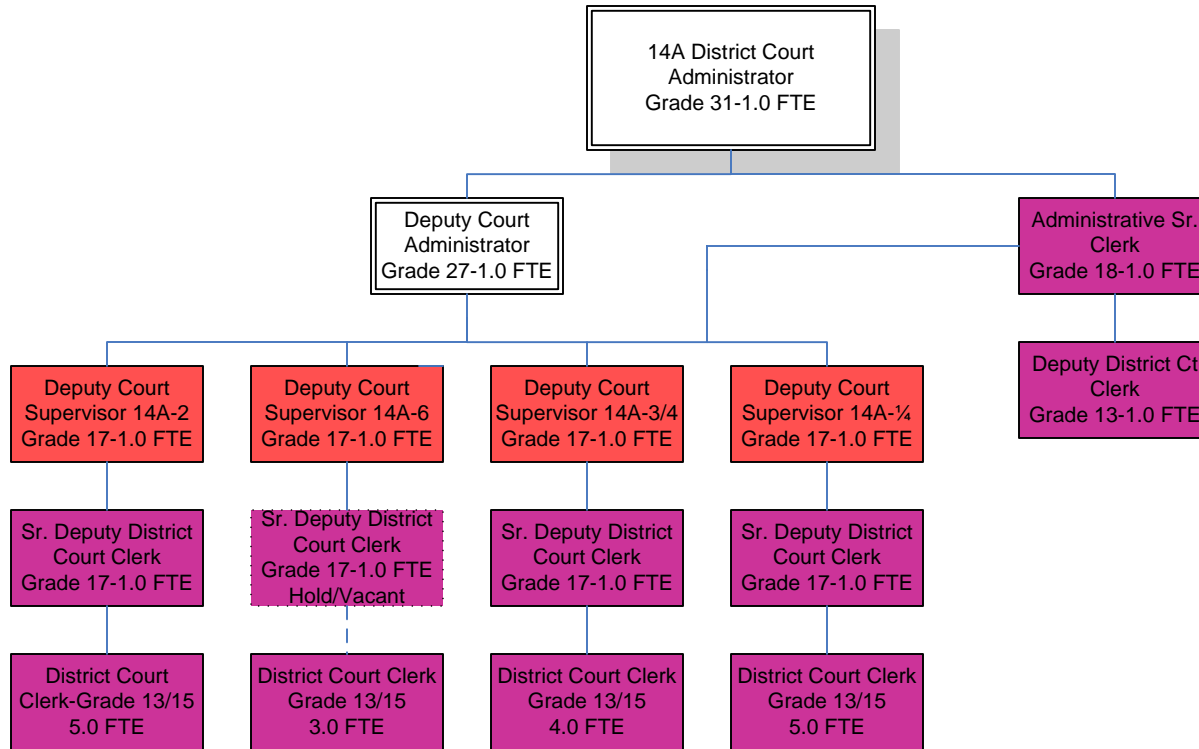


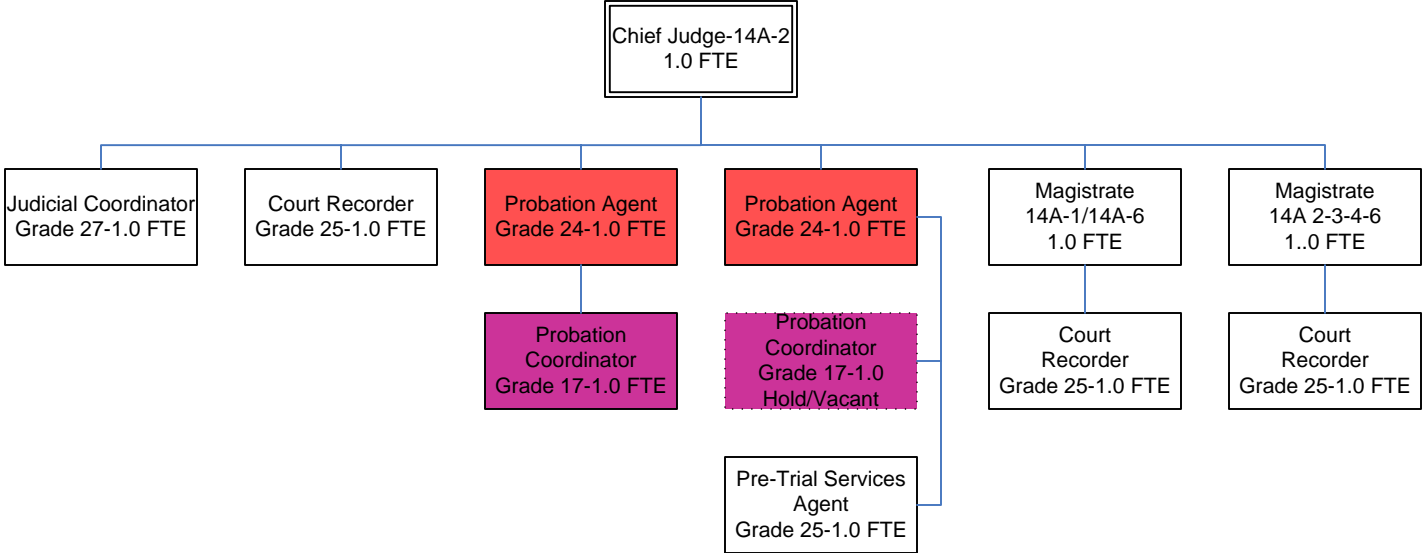
## WC Org Charts Color Key for Union/Non-Union Positions

# 14A District Court-29 FTE



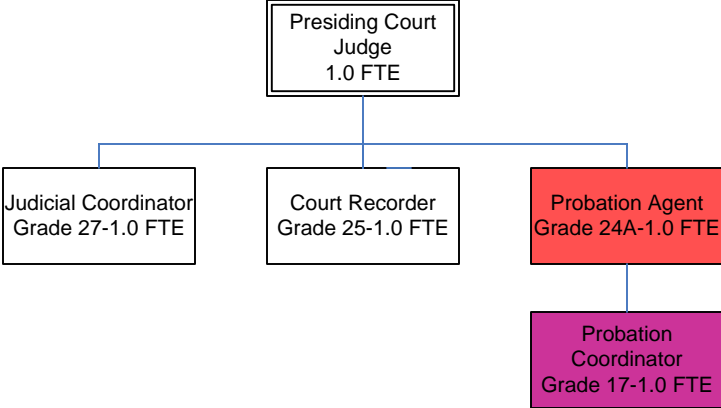
“Administration and Clerical staff report to the Chief Judge, but perform work for all three Judges and two Magistrates.”

# 14A-Chief Judge Staff/Magistrates-12 FTE

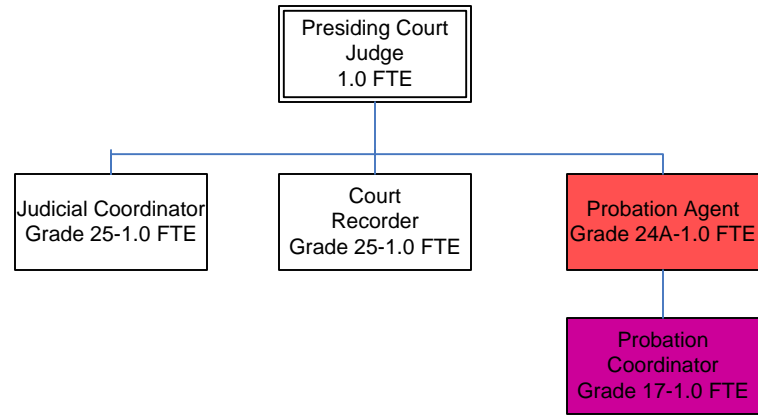


“The Programming Probation Agent, the two Magistrates, and Administrative staff report to the Chief Judge, but perform work for all three Judges.”

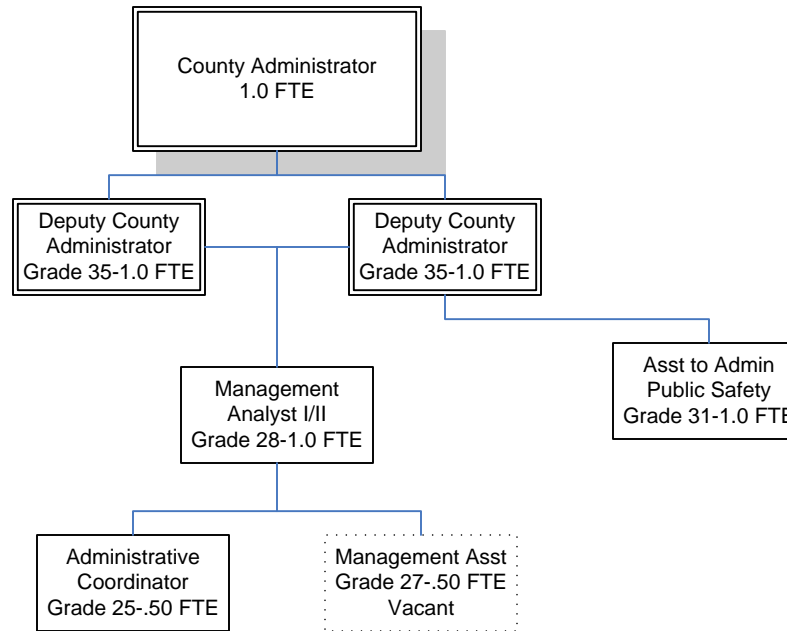
# 14A-1 Presiding Judge Staff-5 FTE



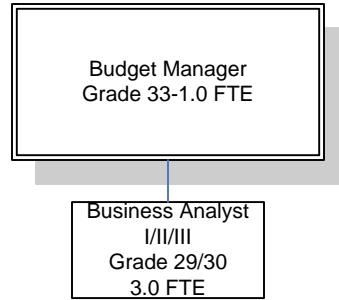
# 14A-3 & 4 Judge Staff-5 FTE



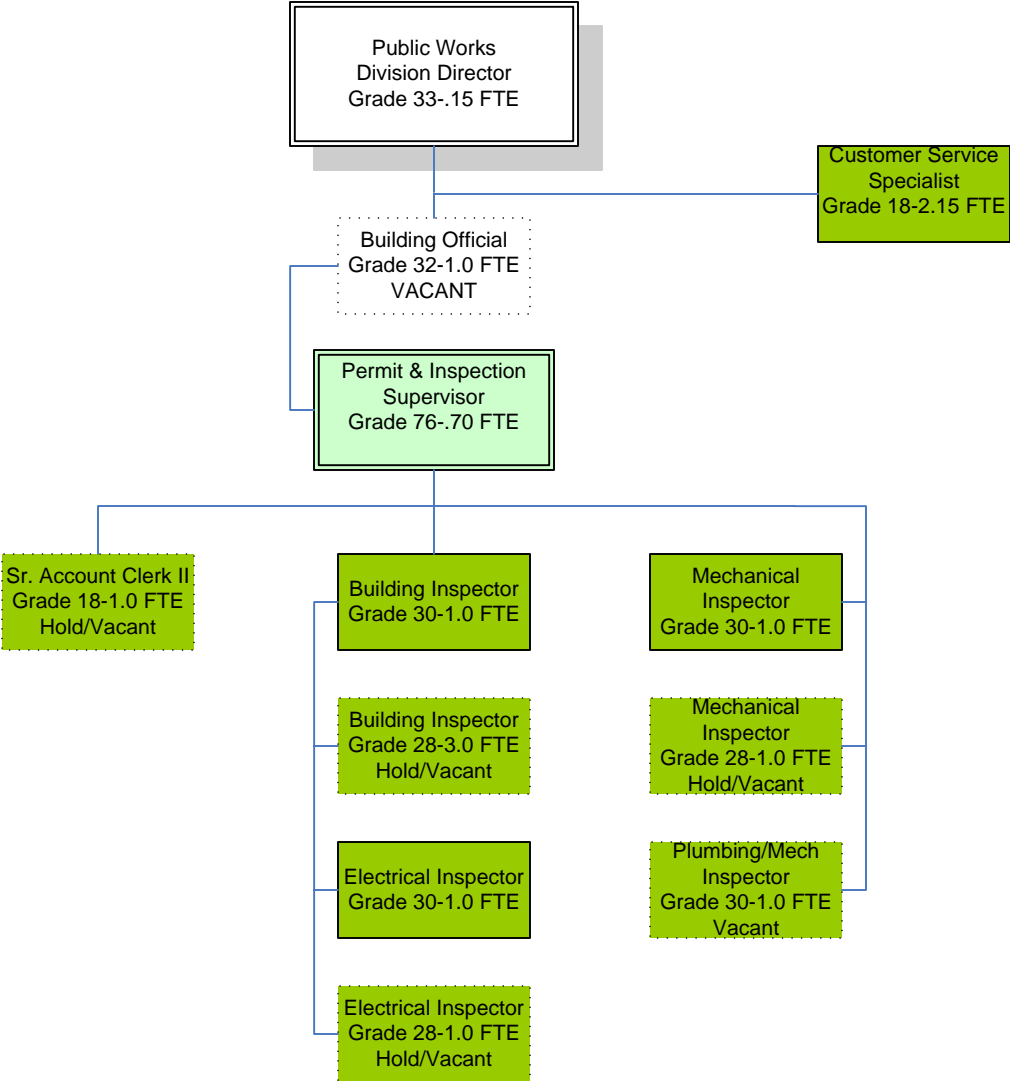
# Administration-6.0 FTE



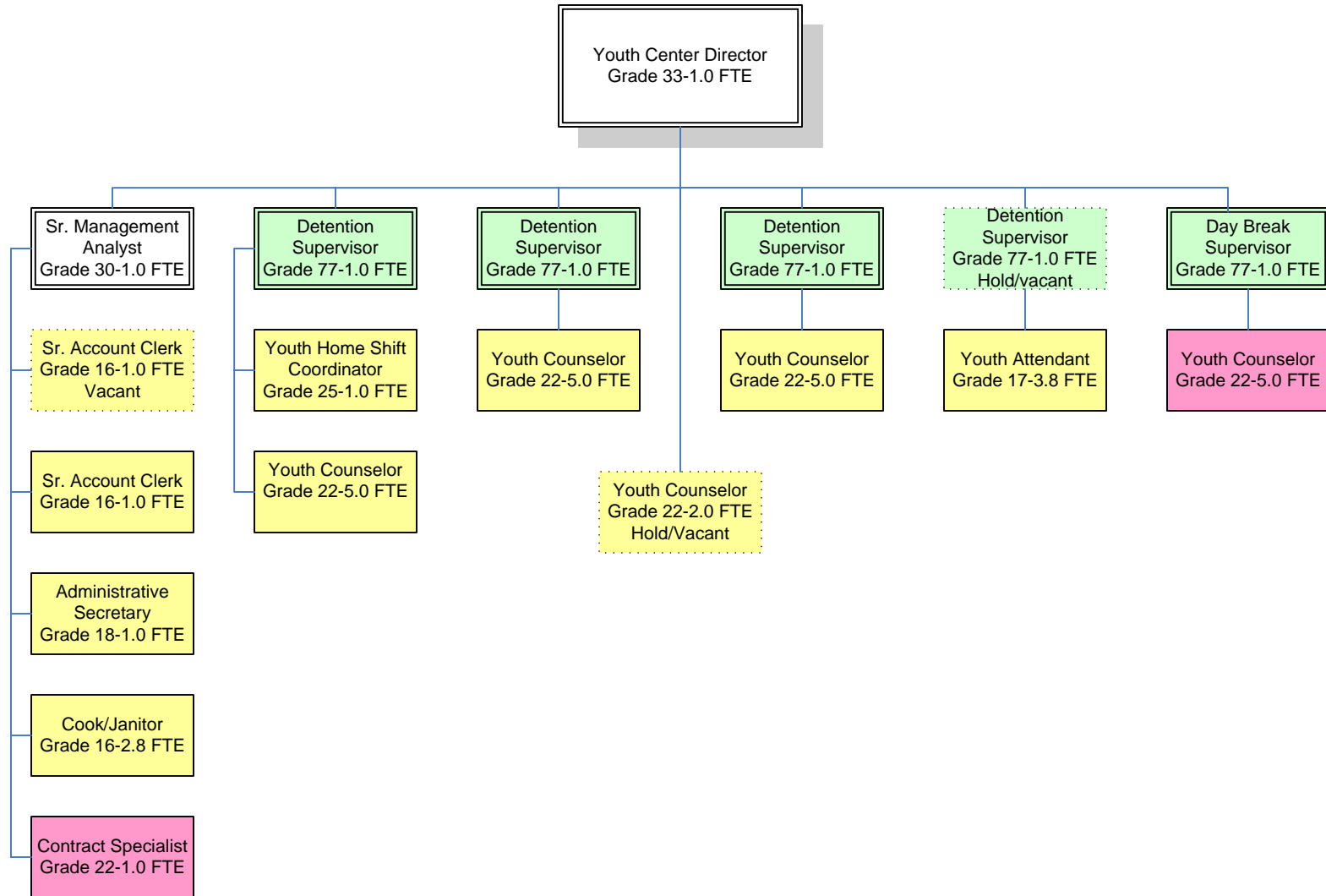
# Budget-4.0 FTE



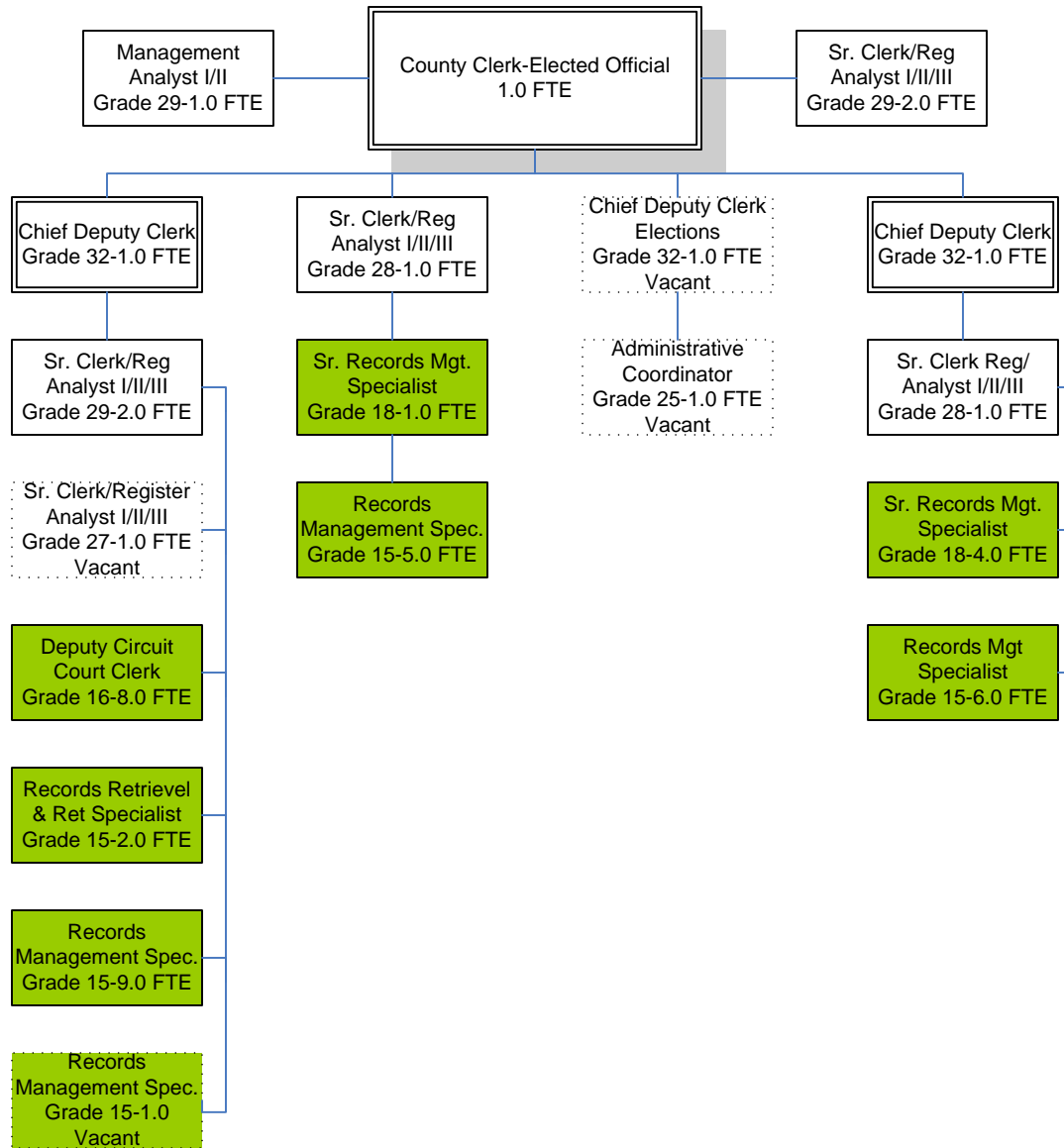
# Building Inspection-14 FTE



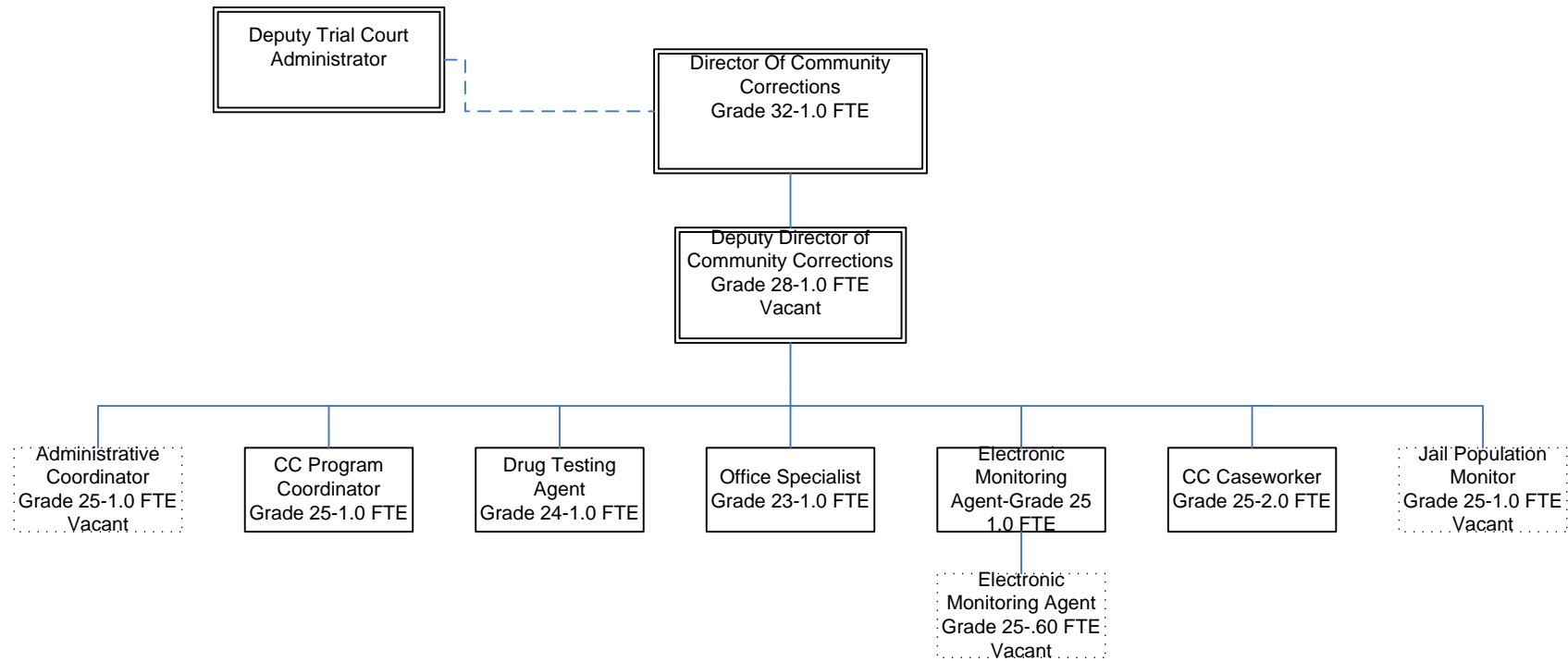
# Children's Services-40.6 FTE



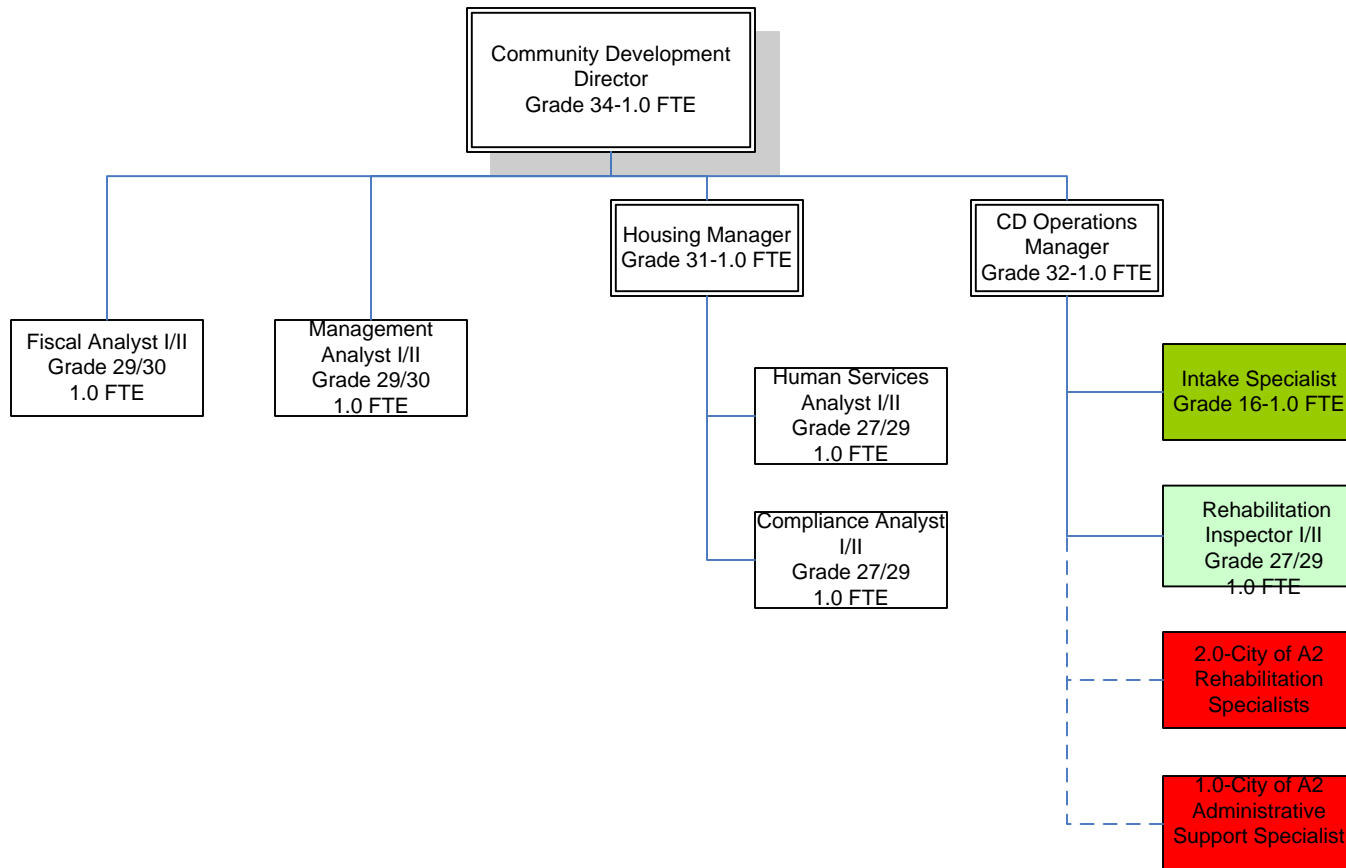
# Clerk/Register of Deeds-49.0 FTE



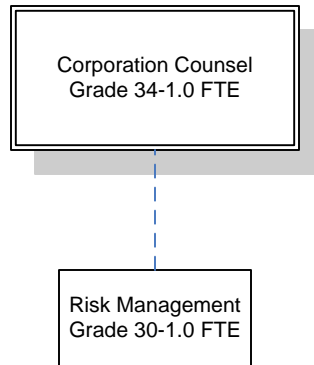
# Community Corrections-10.6 FTE



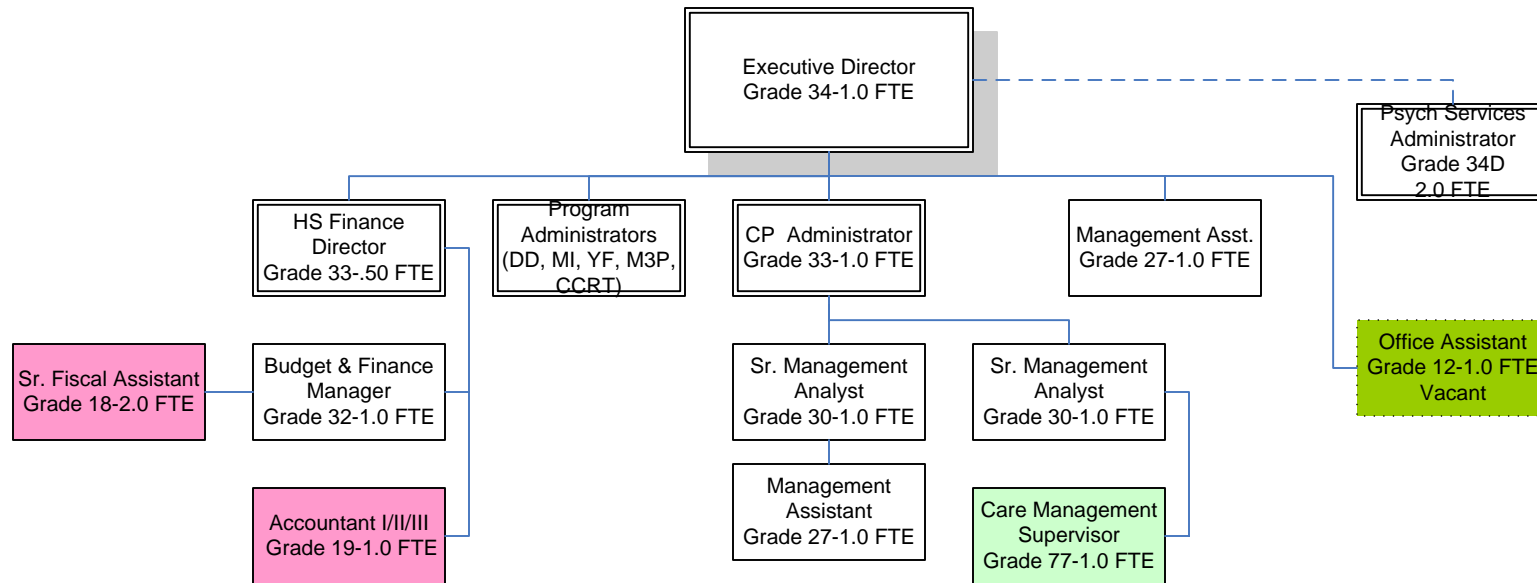
# Community Development-9.0 FTE



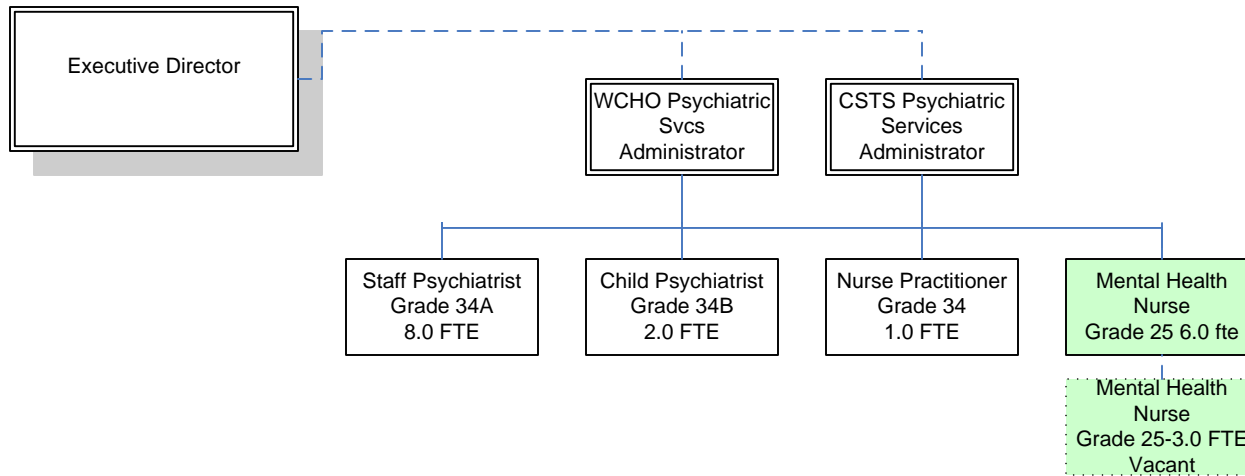
# Corporation Counsel-1.0 FTE



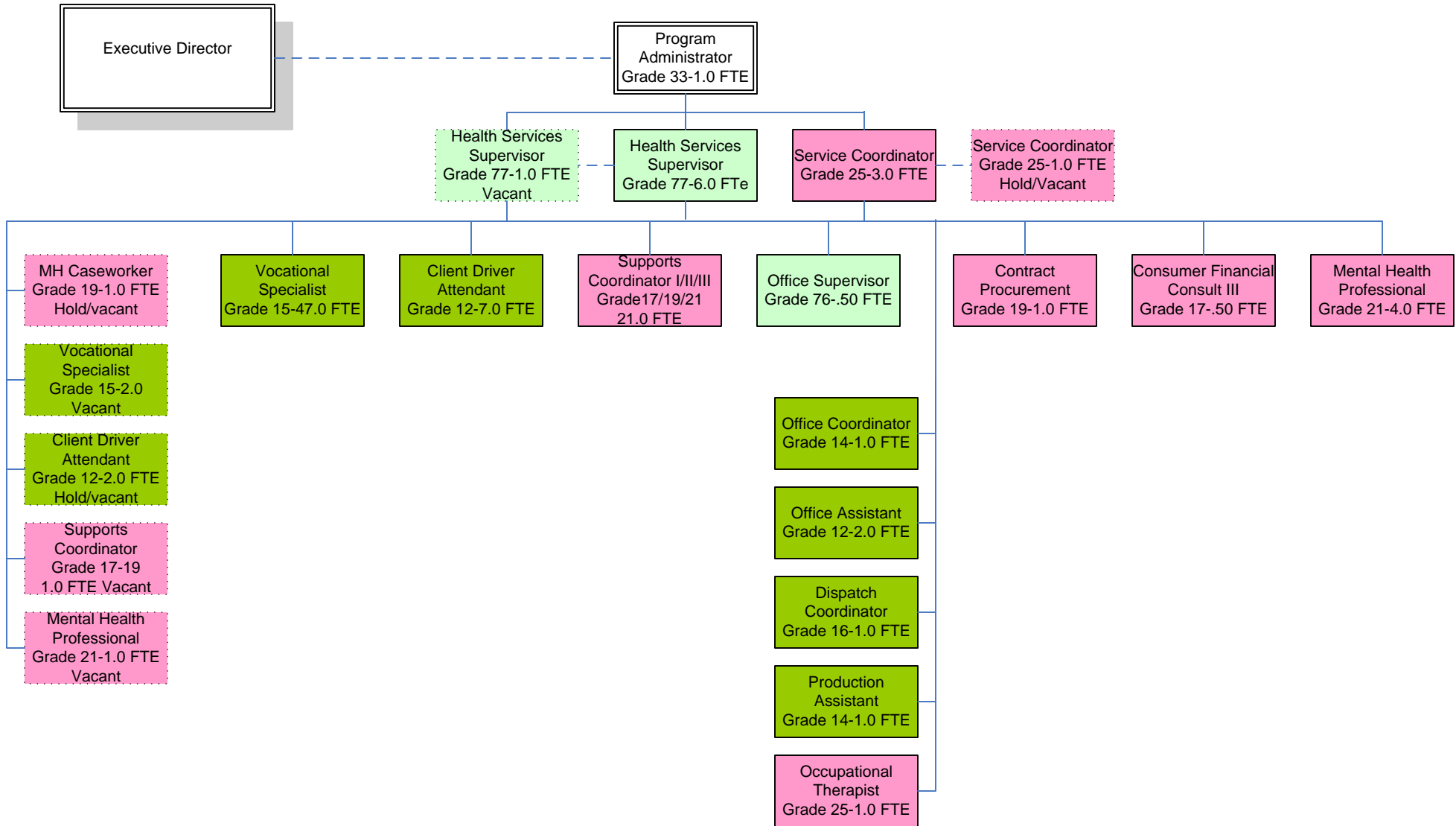
# Community Support & Treatment Services (CSTS)-14.5 FTE



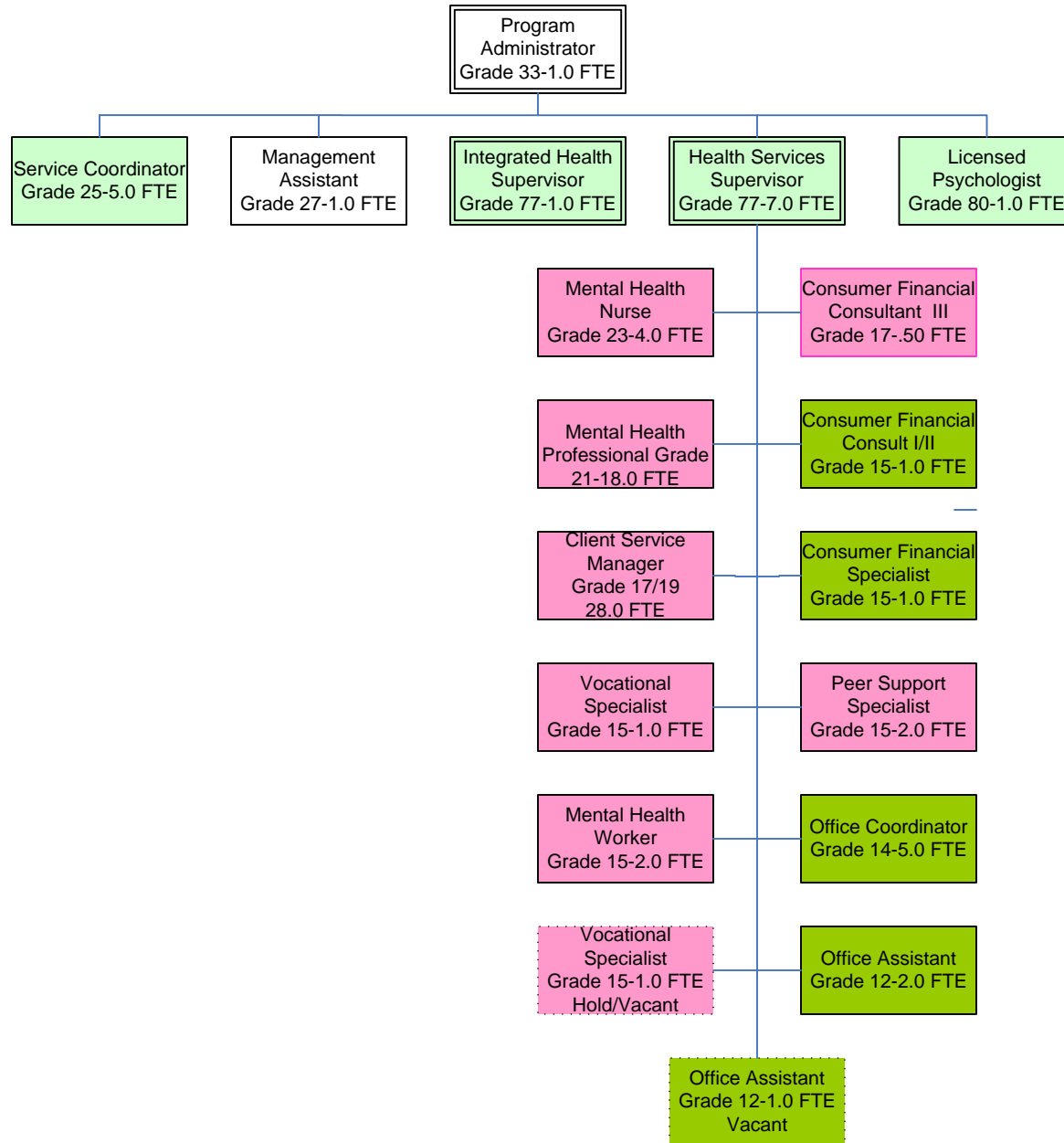
# CSTS-Psychiatric Services-20.0 FTE



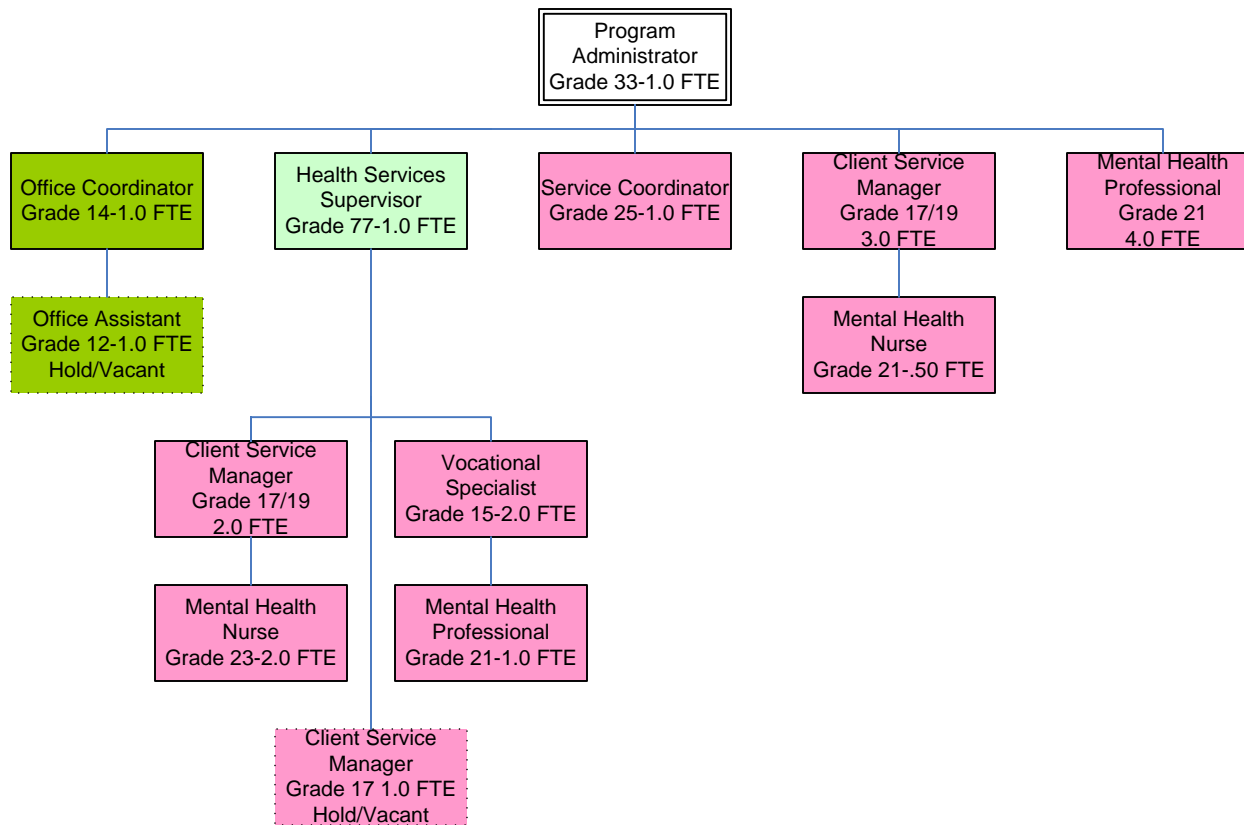
# CSTS-DD Services-106 FTE



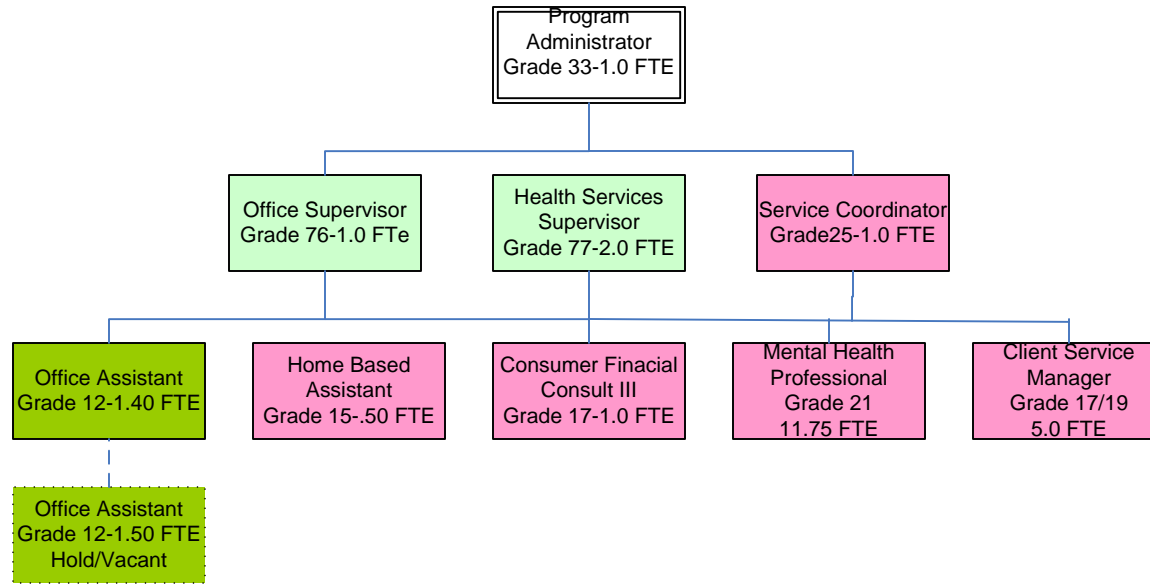
# CSTS-Adult MI Services-82.5 FTE



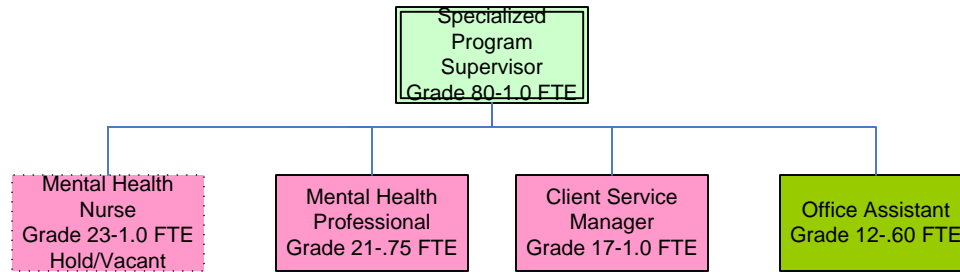
# CSTS-Project Outreach (PORT)-20.5 FTE



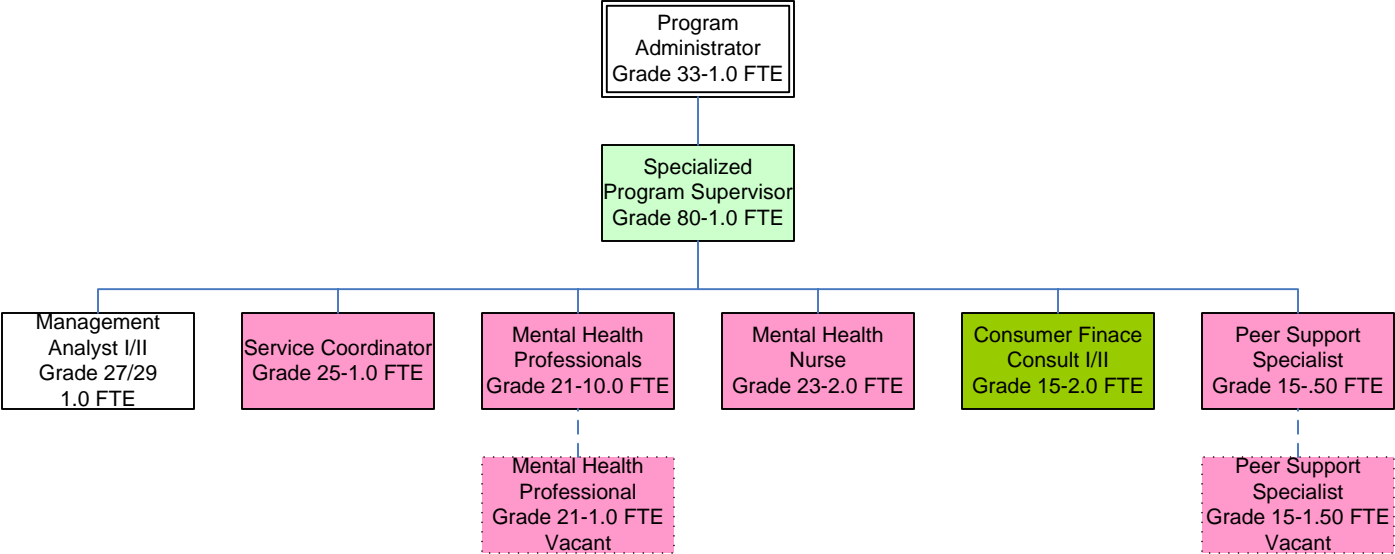
# CSTS-Youth & Family Services-26.15 FTE



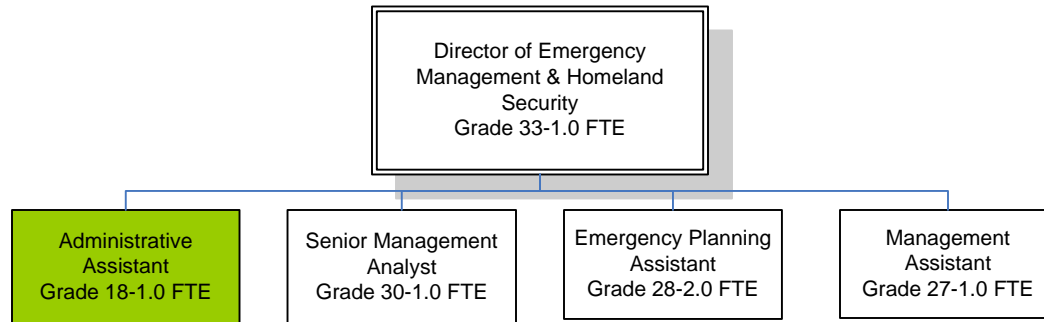
# CSTS-M3P-4.35 FTE



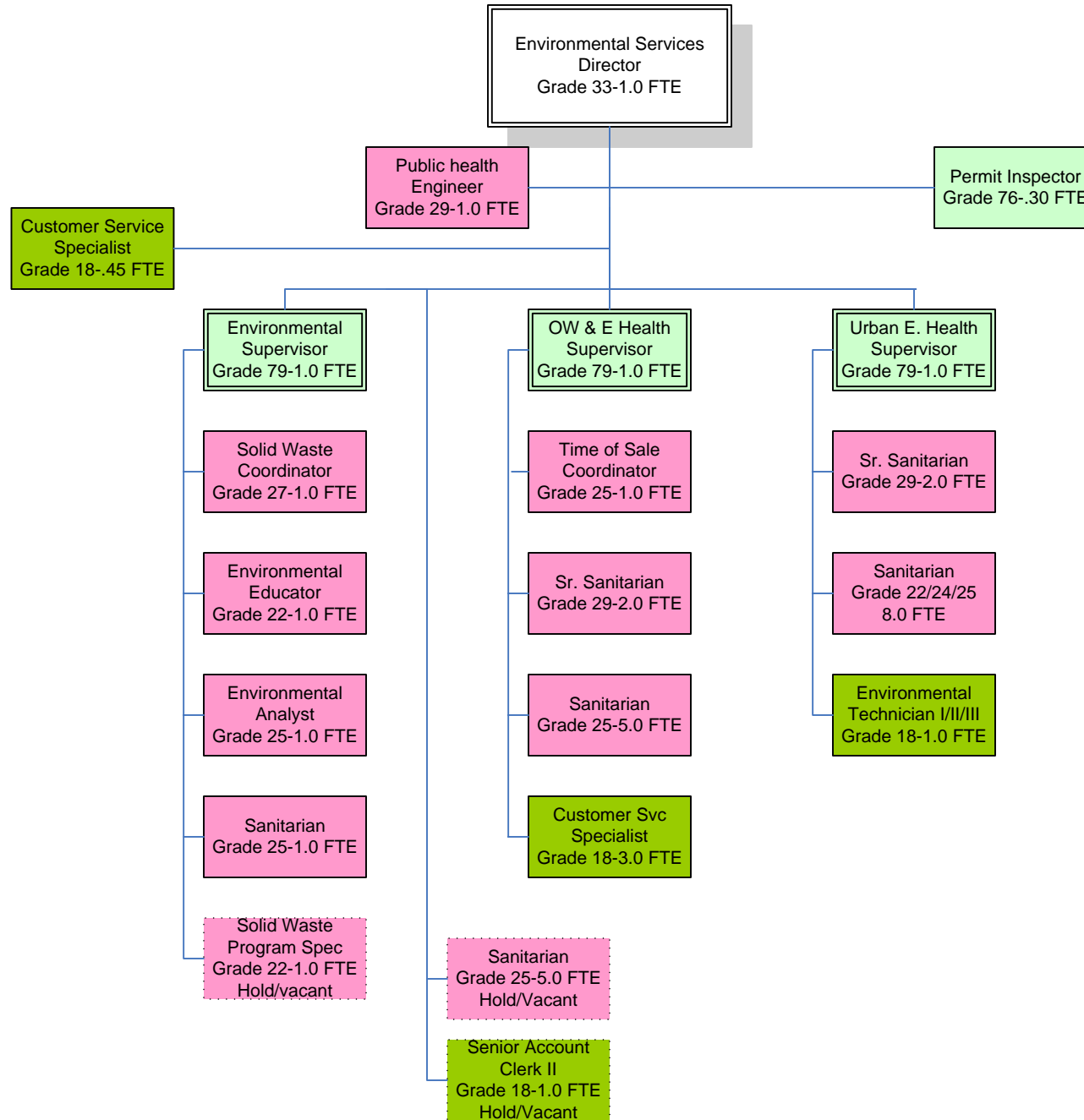
# CSTS-Crisis Response Team-21 FTE



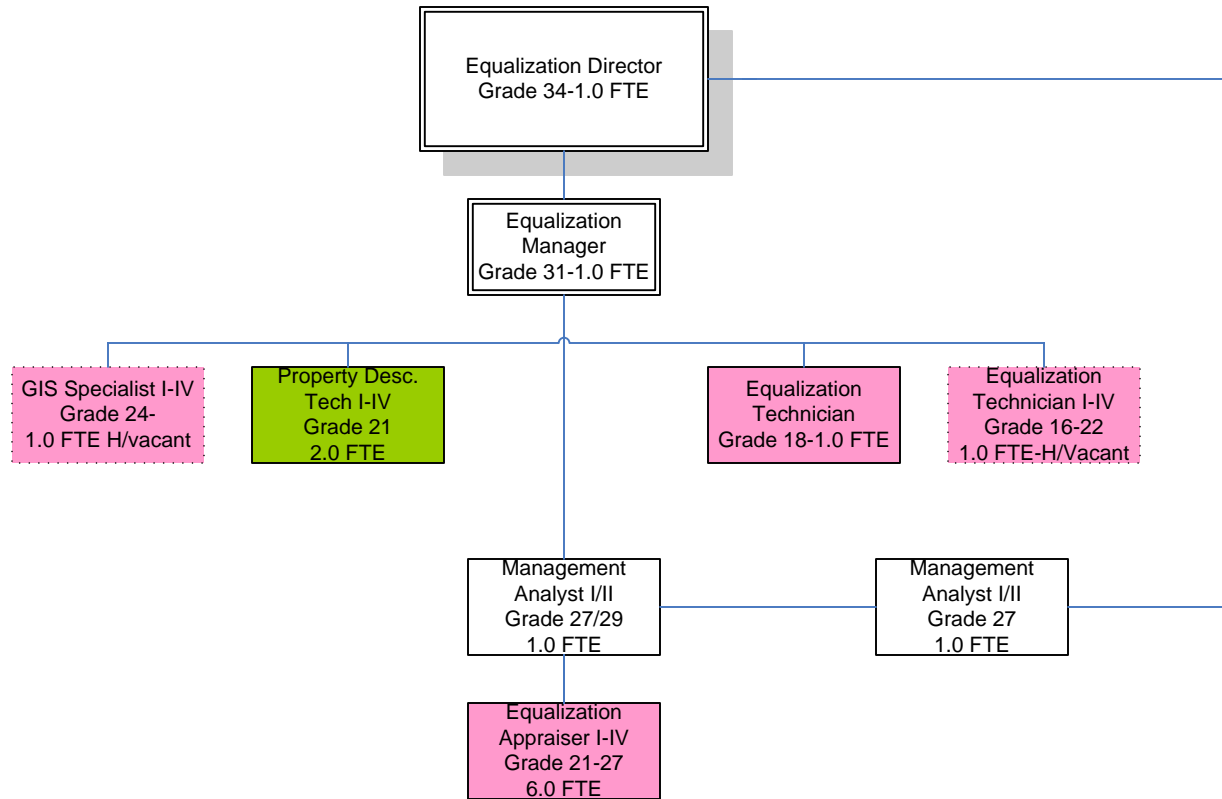
# Emergency Management-6 FTE



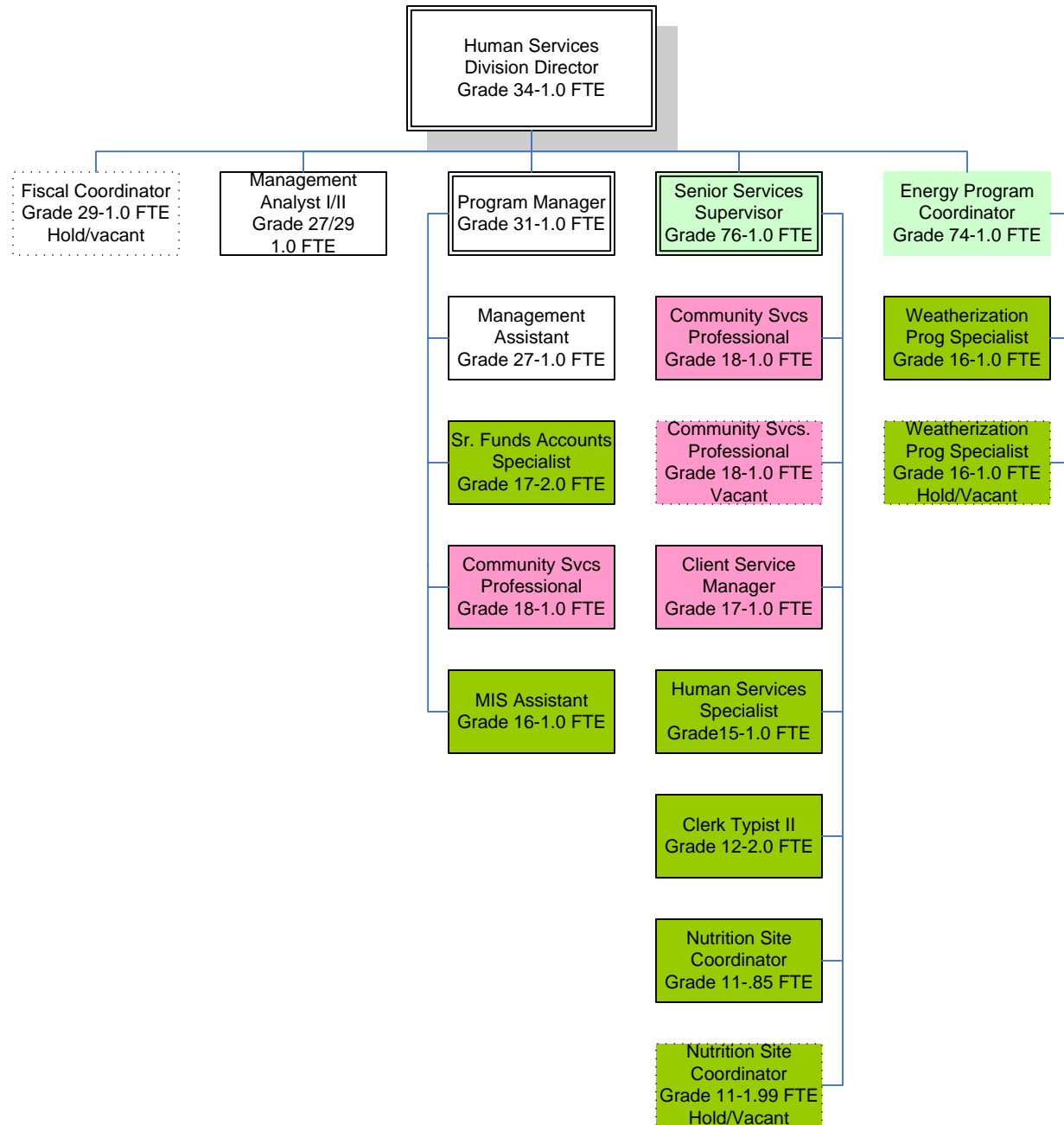
# Environmental Health 38.75 FTE



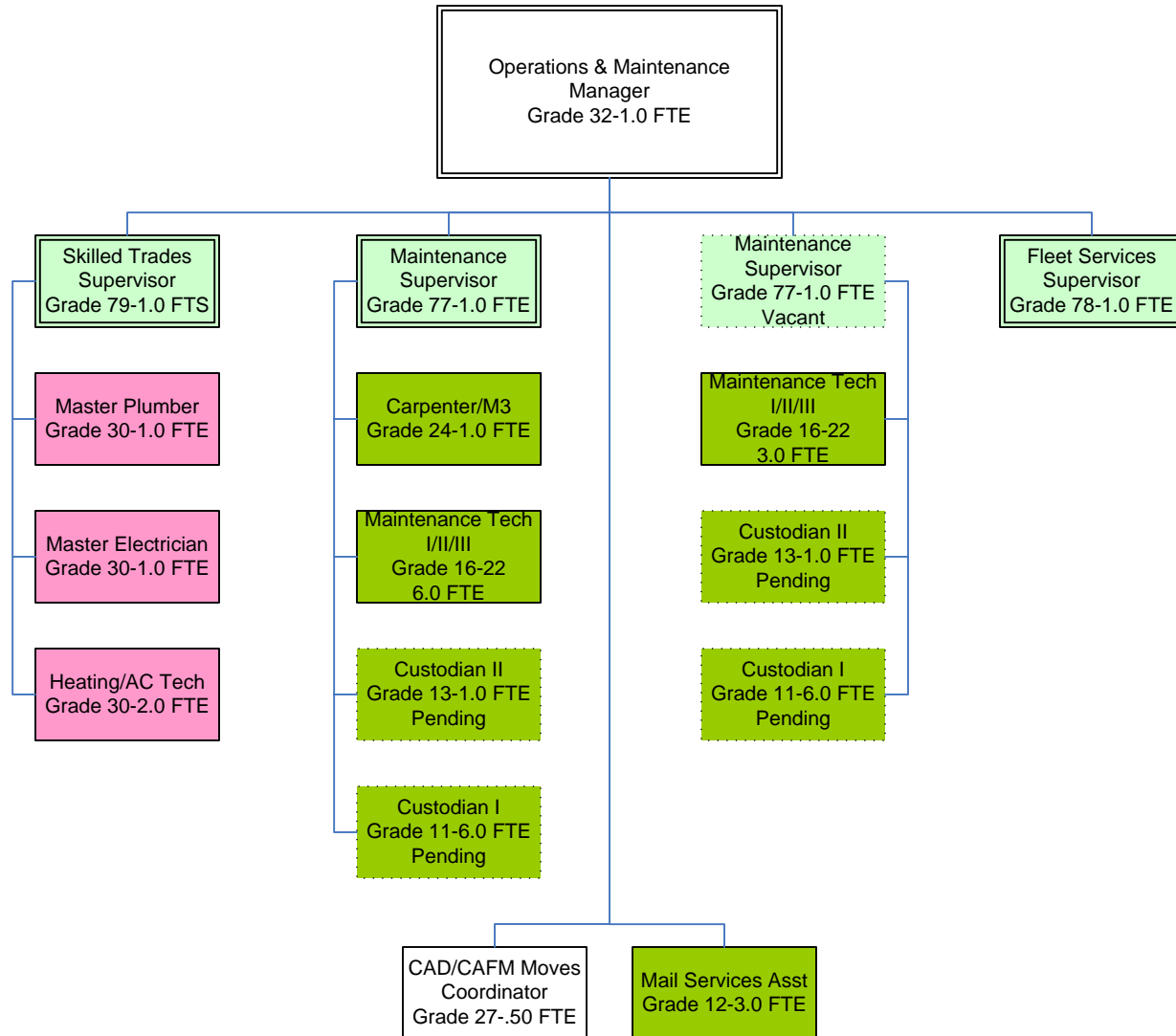
# Equalization-15 FTE



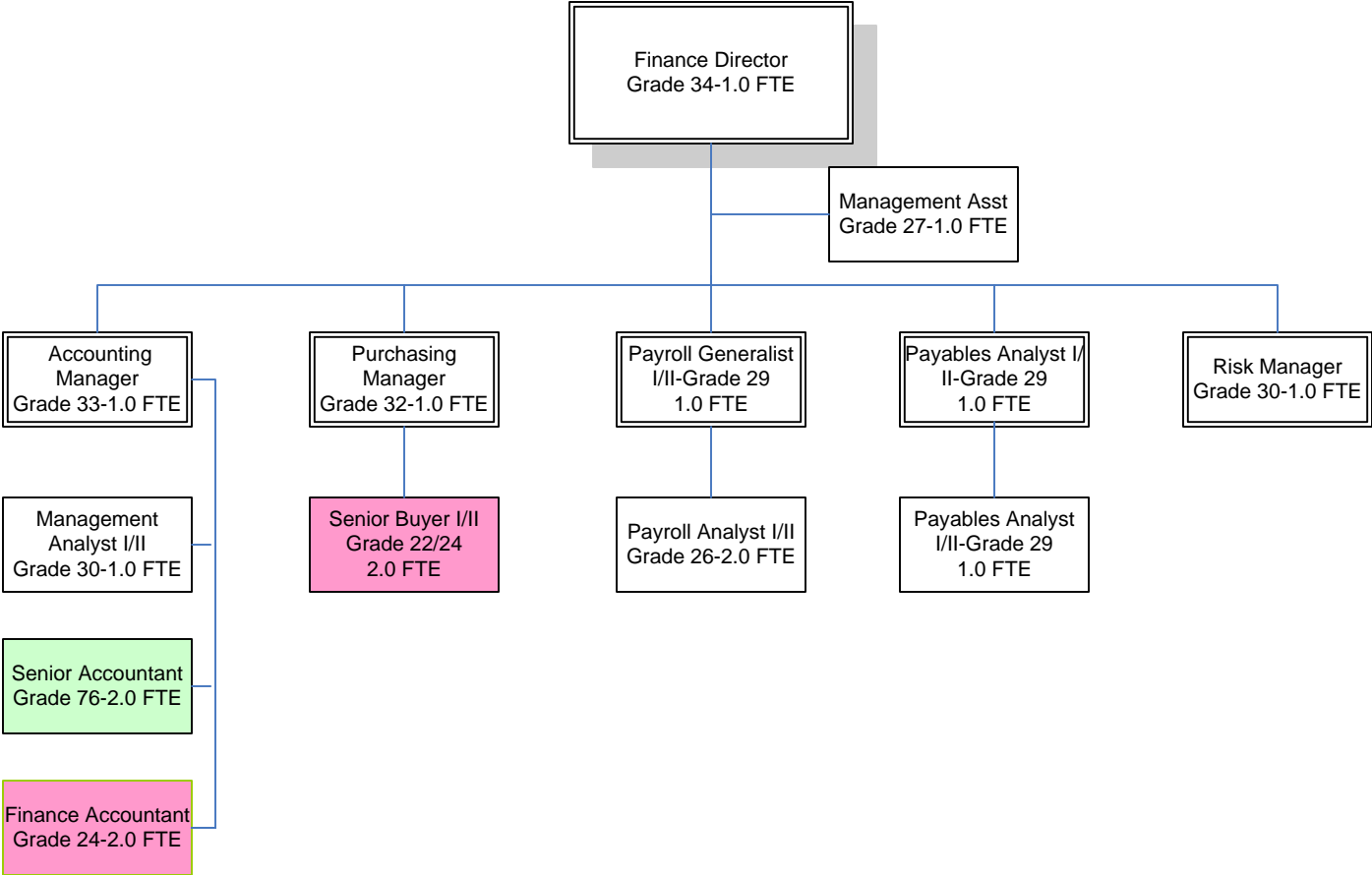
# Employment Training & Community Services (ETCS)-21.84 FTE



# Facilities Management-36.50 FTE

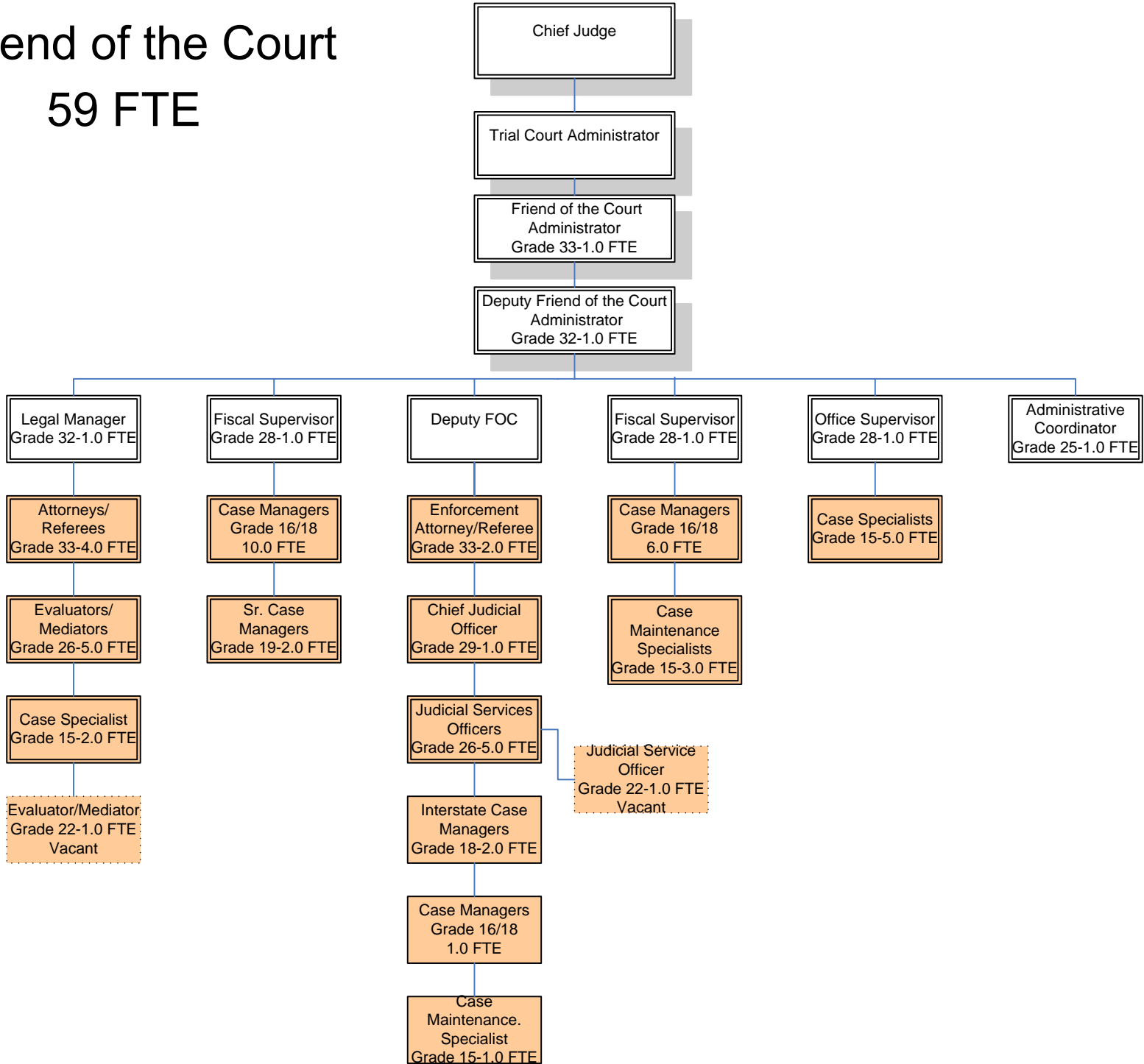


# Finance-17 FTE

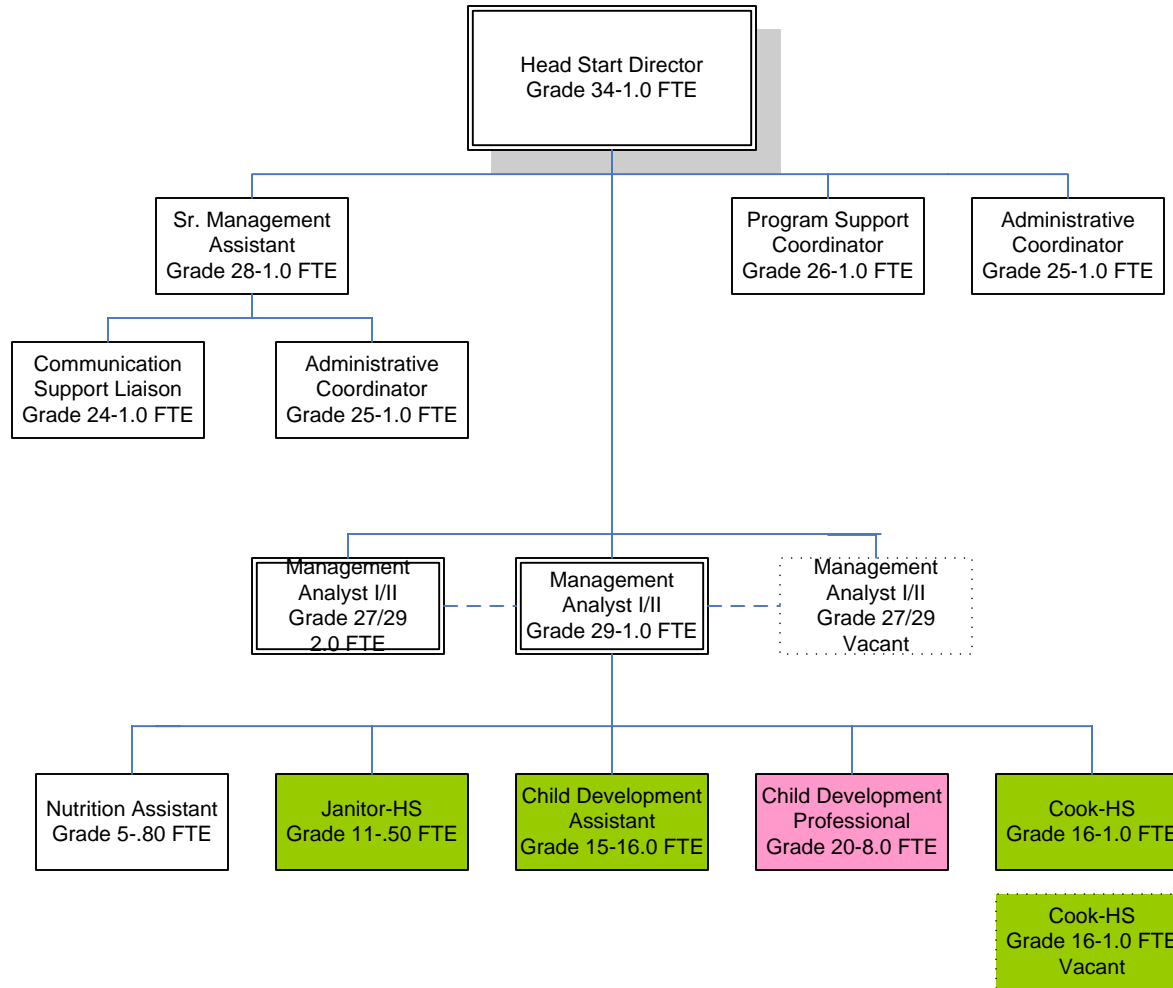


# Friend of the Court

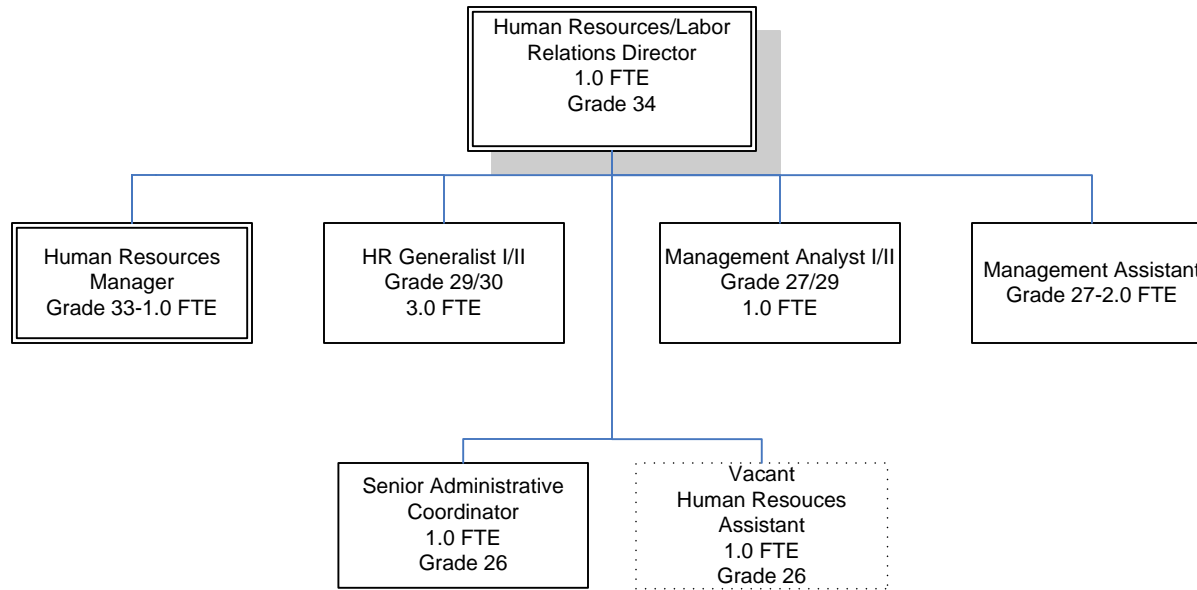
## 59 FTE



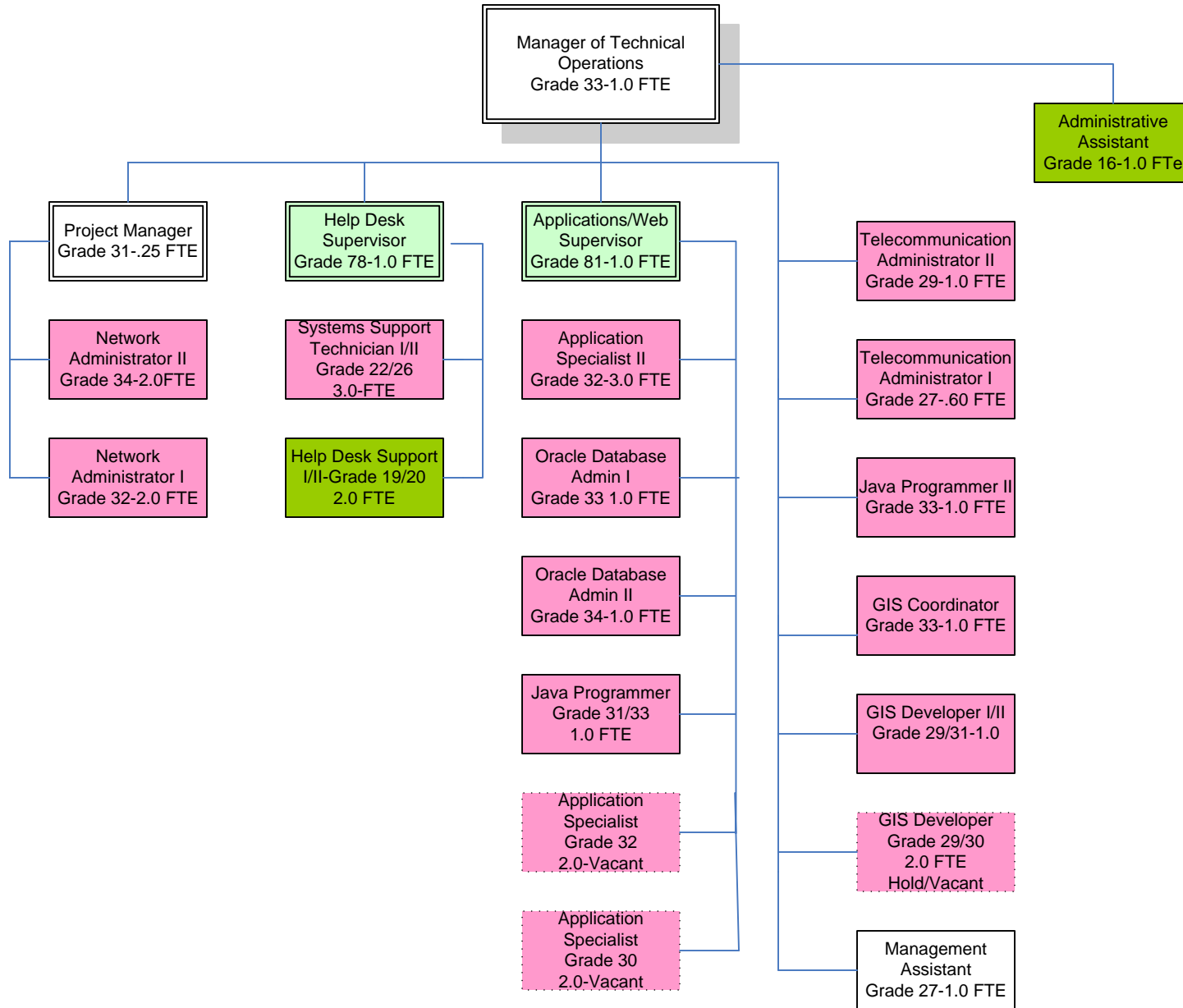
# Head Start-37.3 FTE



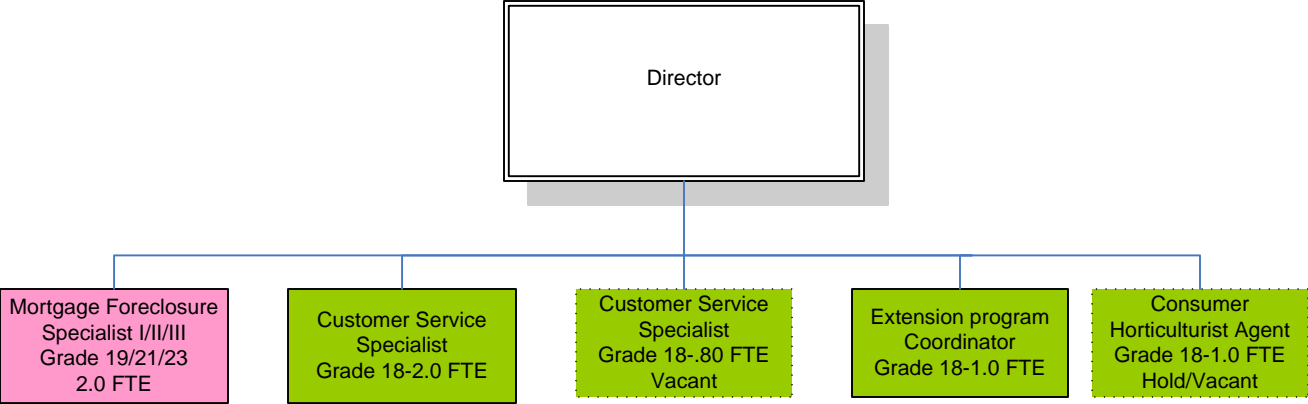
# Human Resources-10 FTE



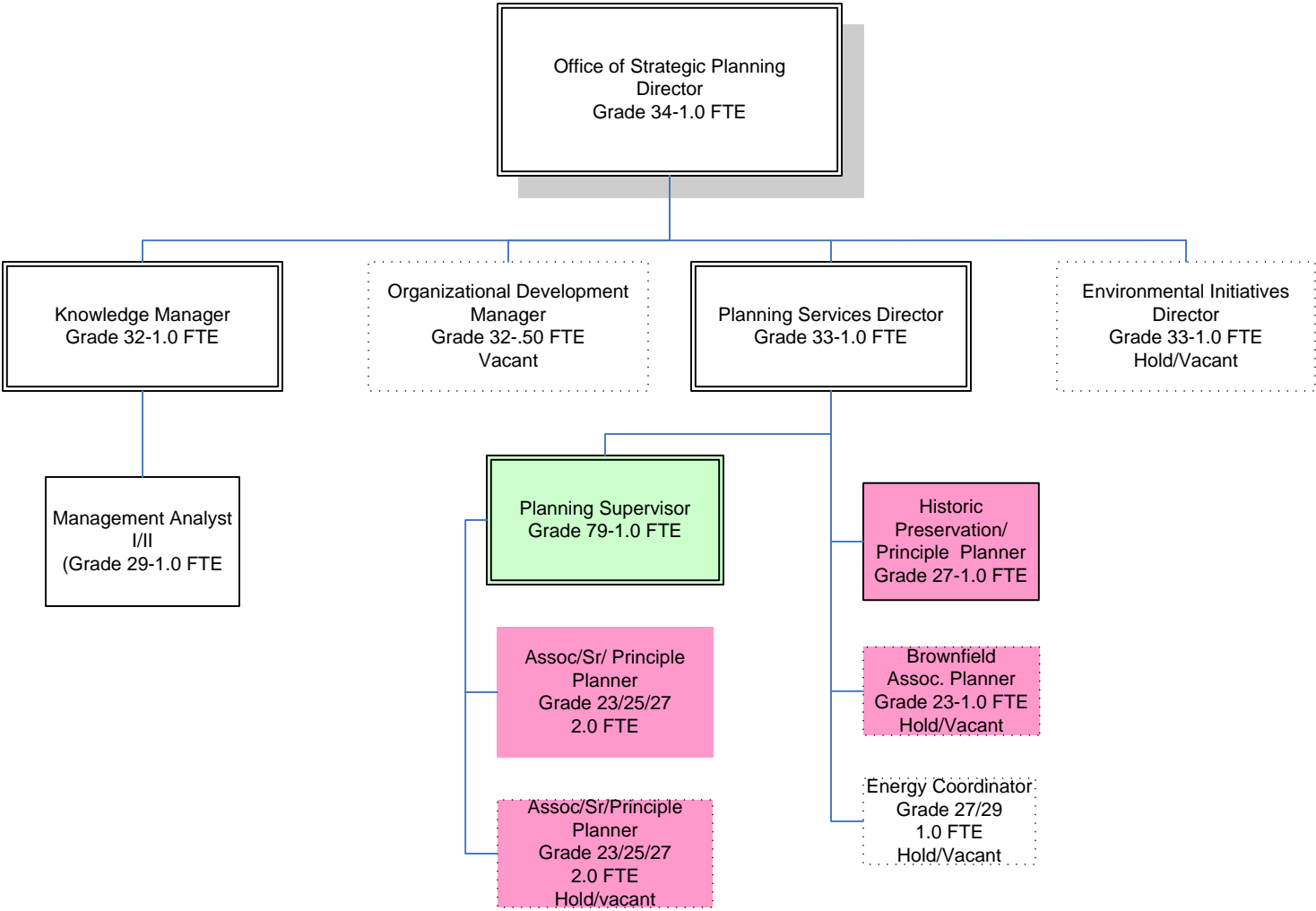
# Information Technology-30.85 FTE



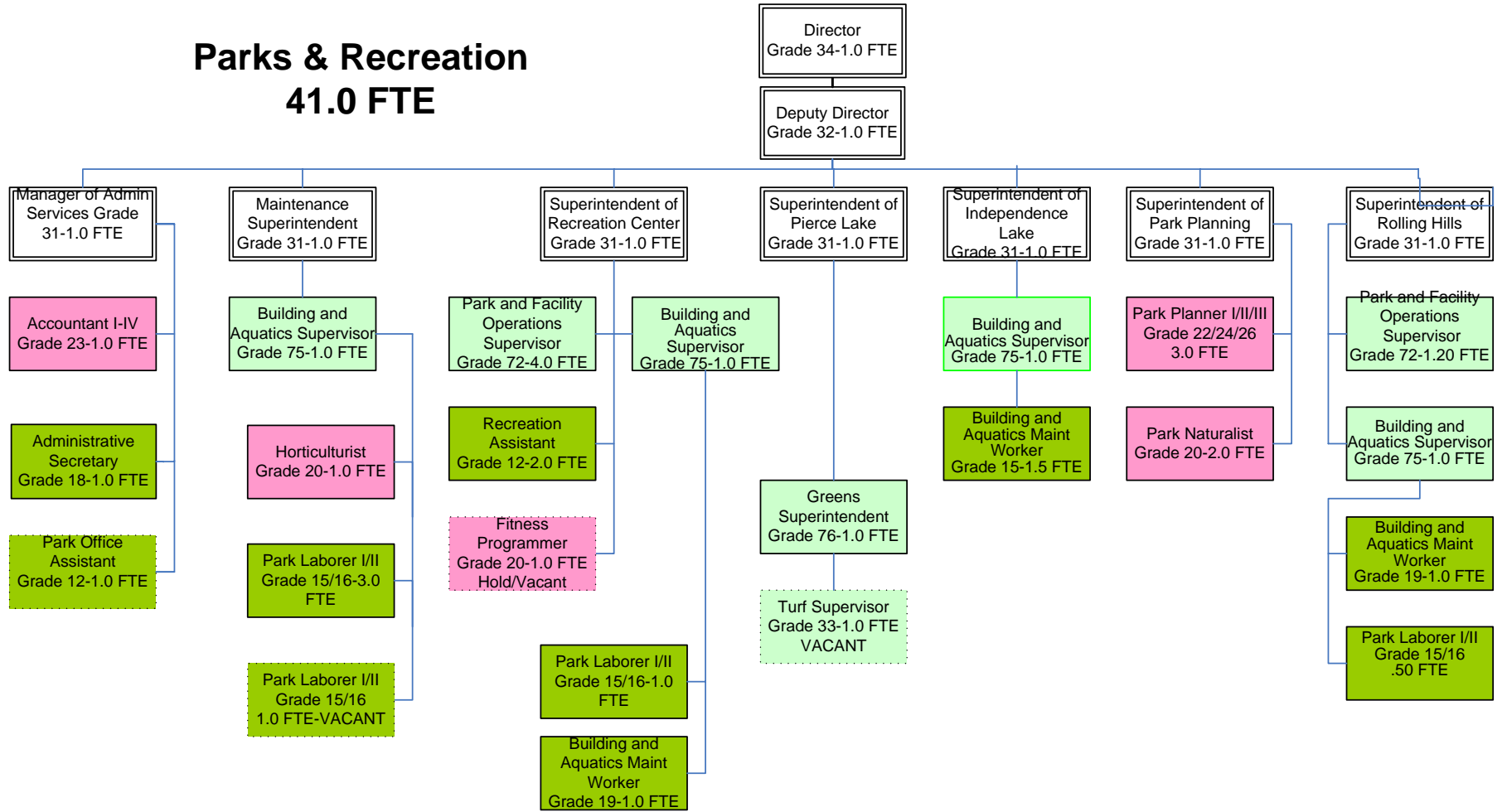
# MSU Extension-6.8 FTE



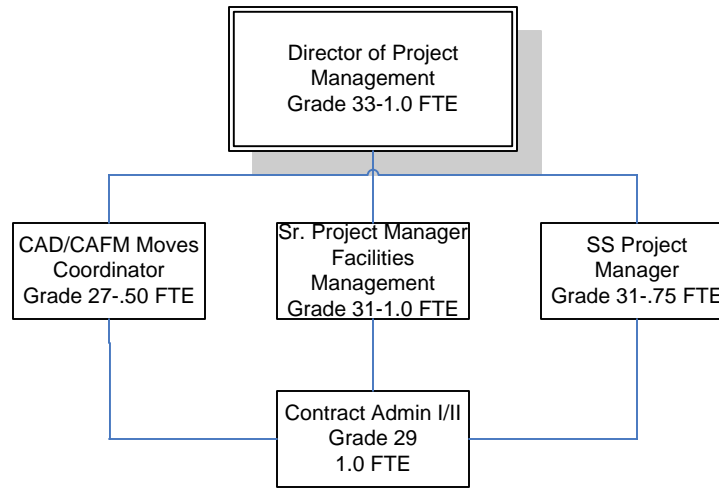
OFFICE OF STRATEGIC PLANNING-13.50 FTE



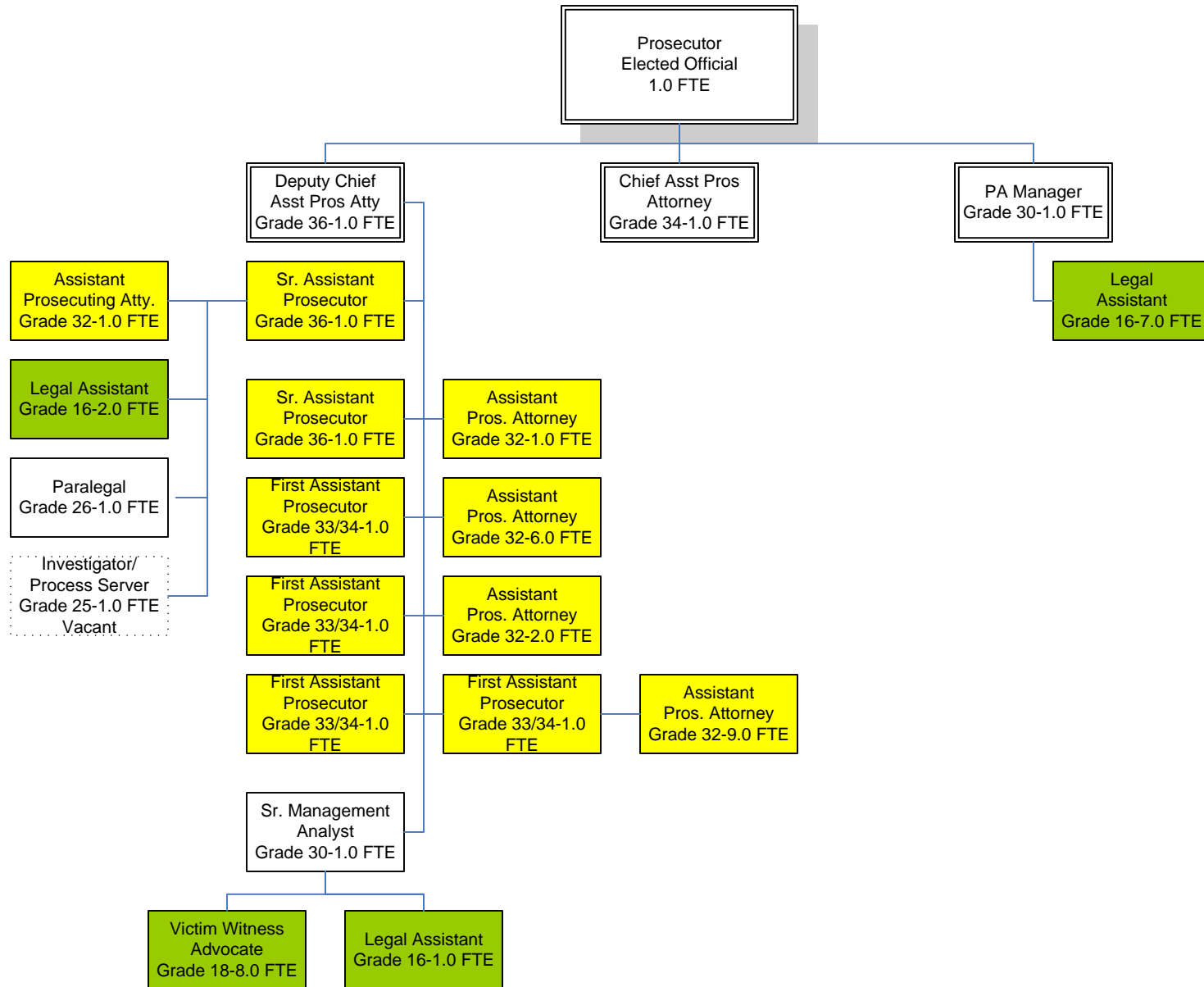
# Parks & Recreation 41.0 FTE



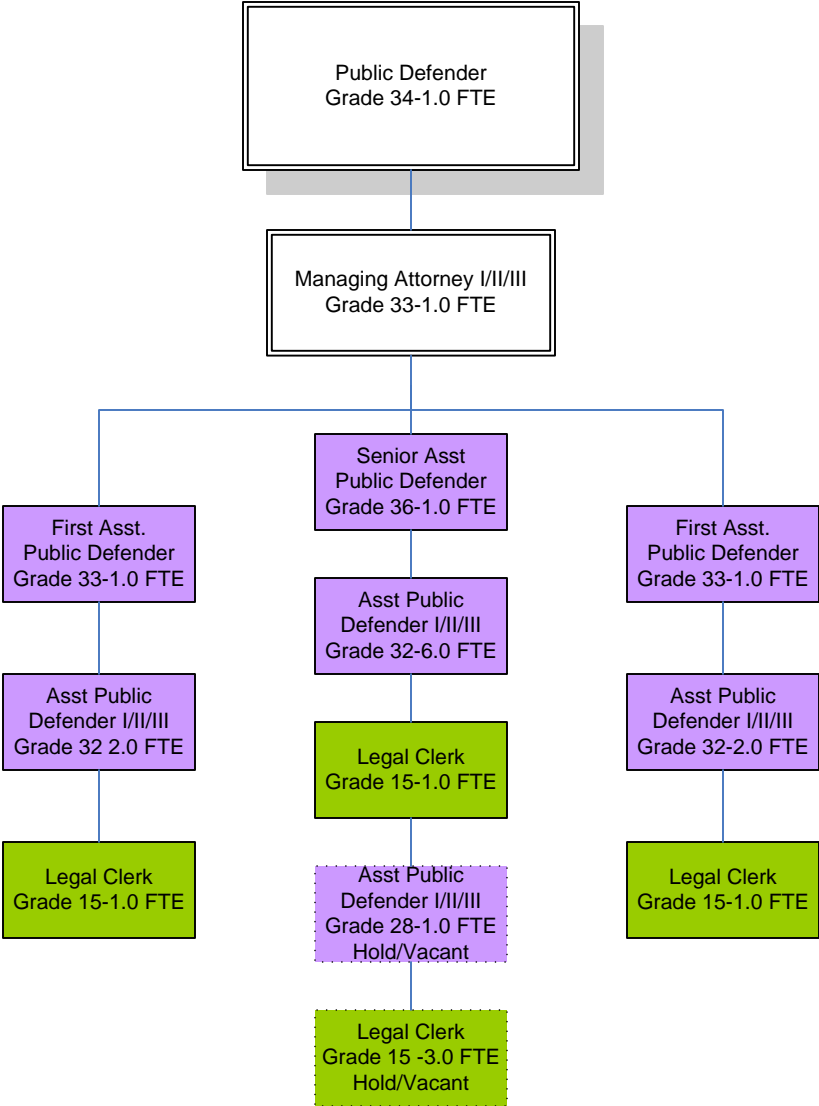
# Project Management-4.25 FTE



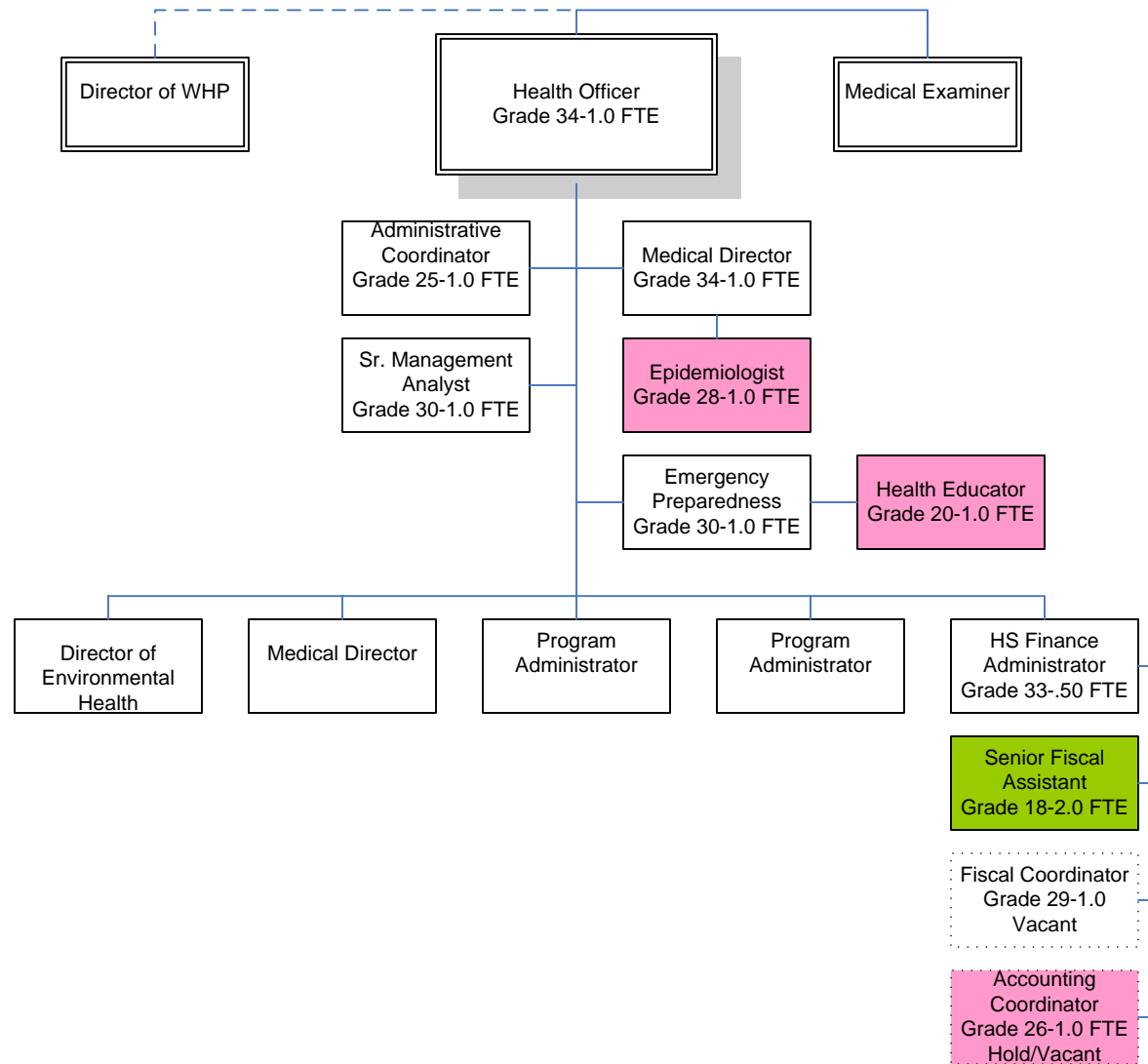
# Prosecuting Attorney-50.0 FTE



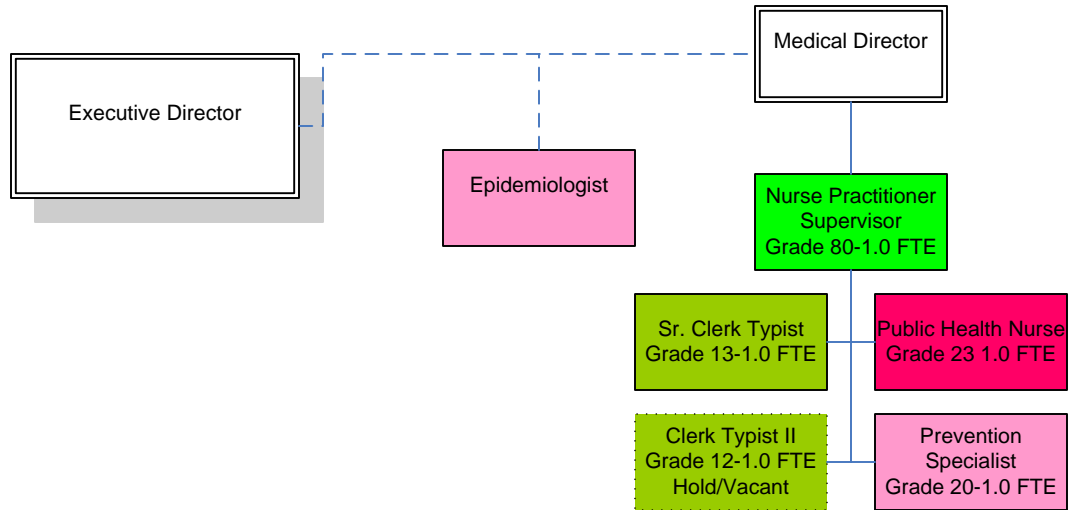
# Public Defender-22 FTE



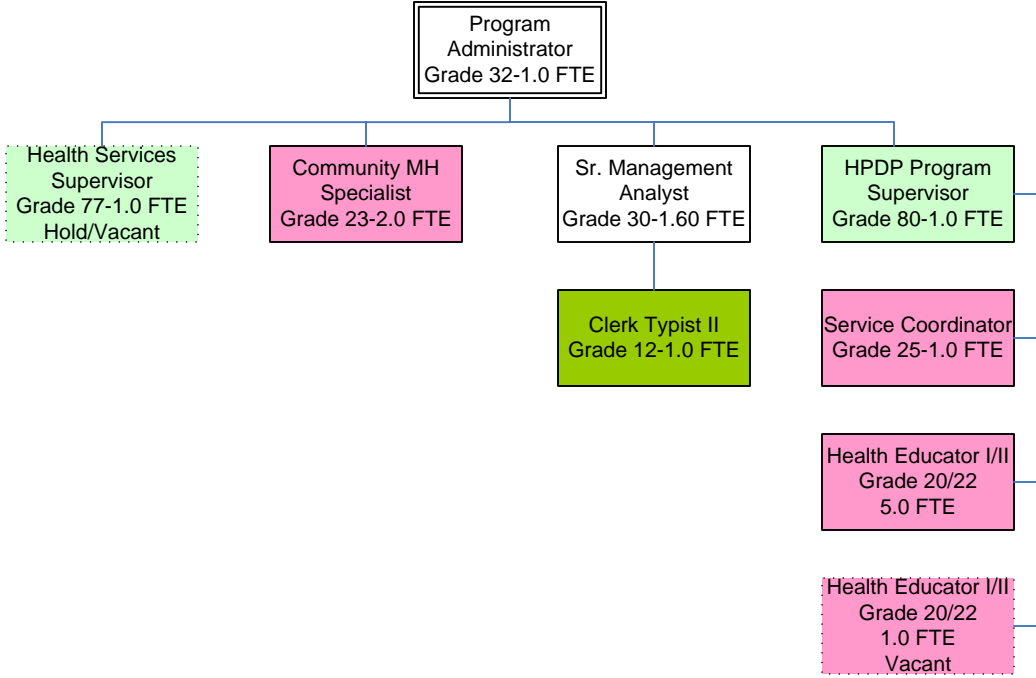
# Public Health-11.50 FTE



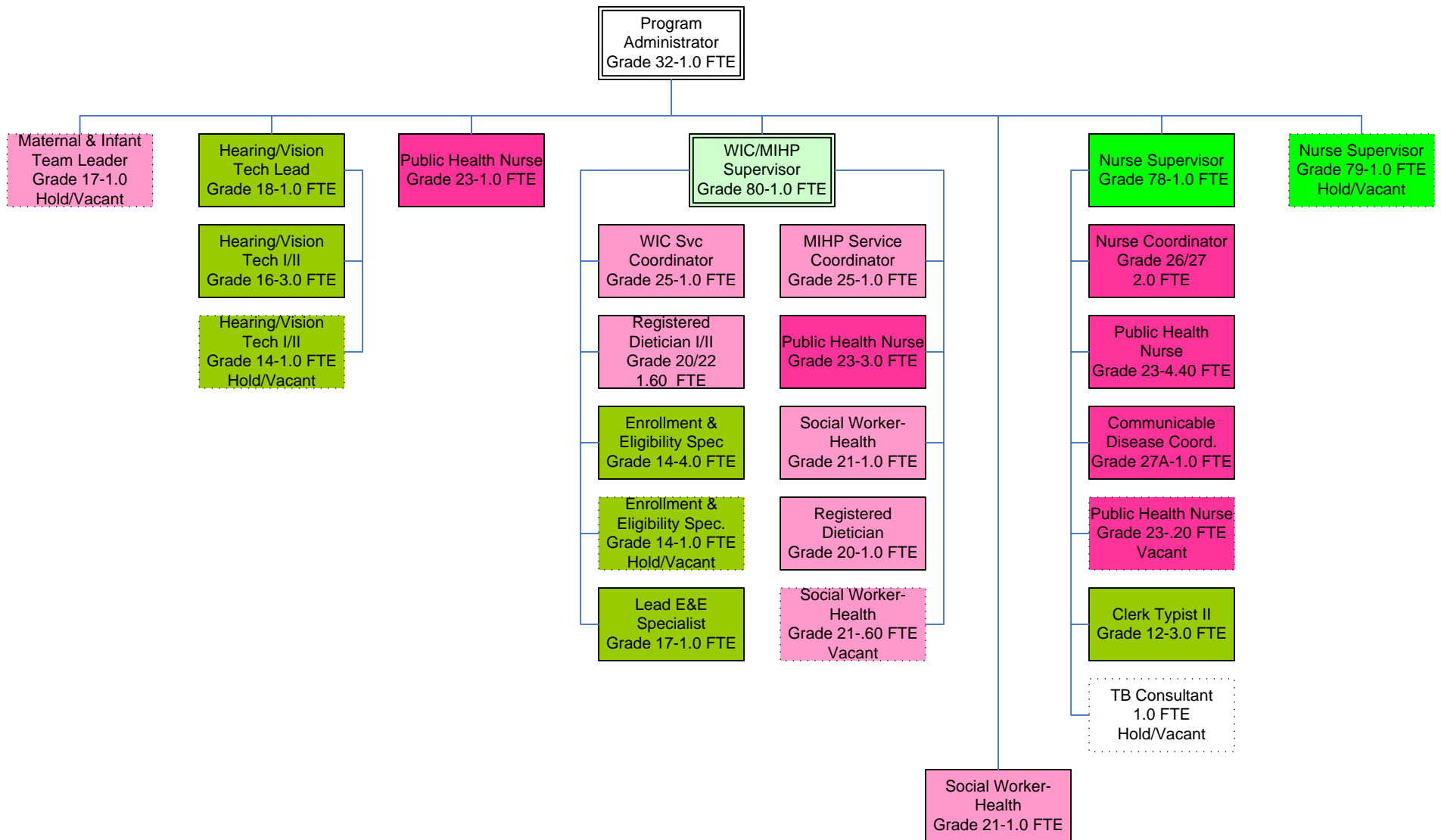
# Public Health-Disease Control-5.0 FTE



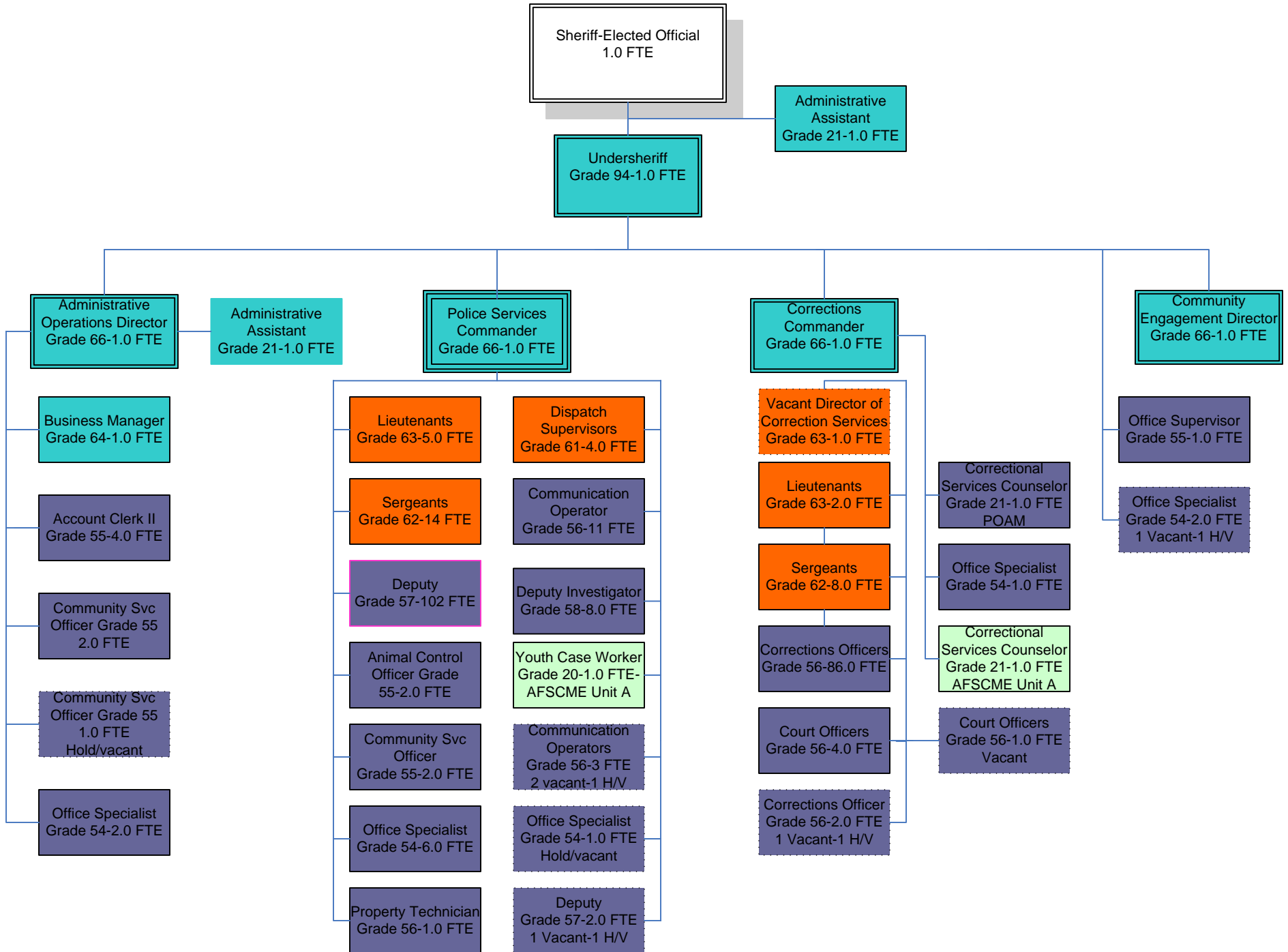
# Public Health-Health Promotion/Disease Prevention-14.6 FTE



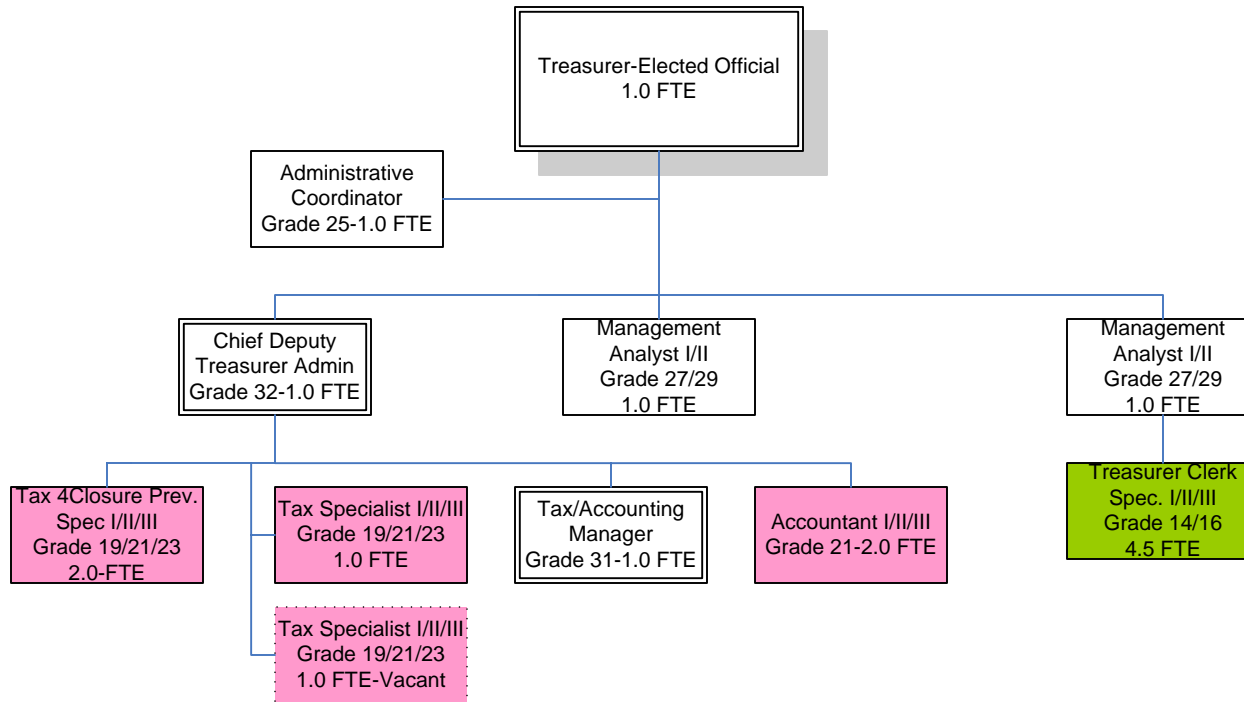
# Public Health-WIC/MIHP-38.8 FTE



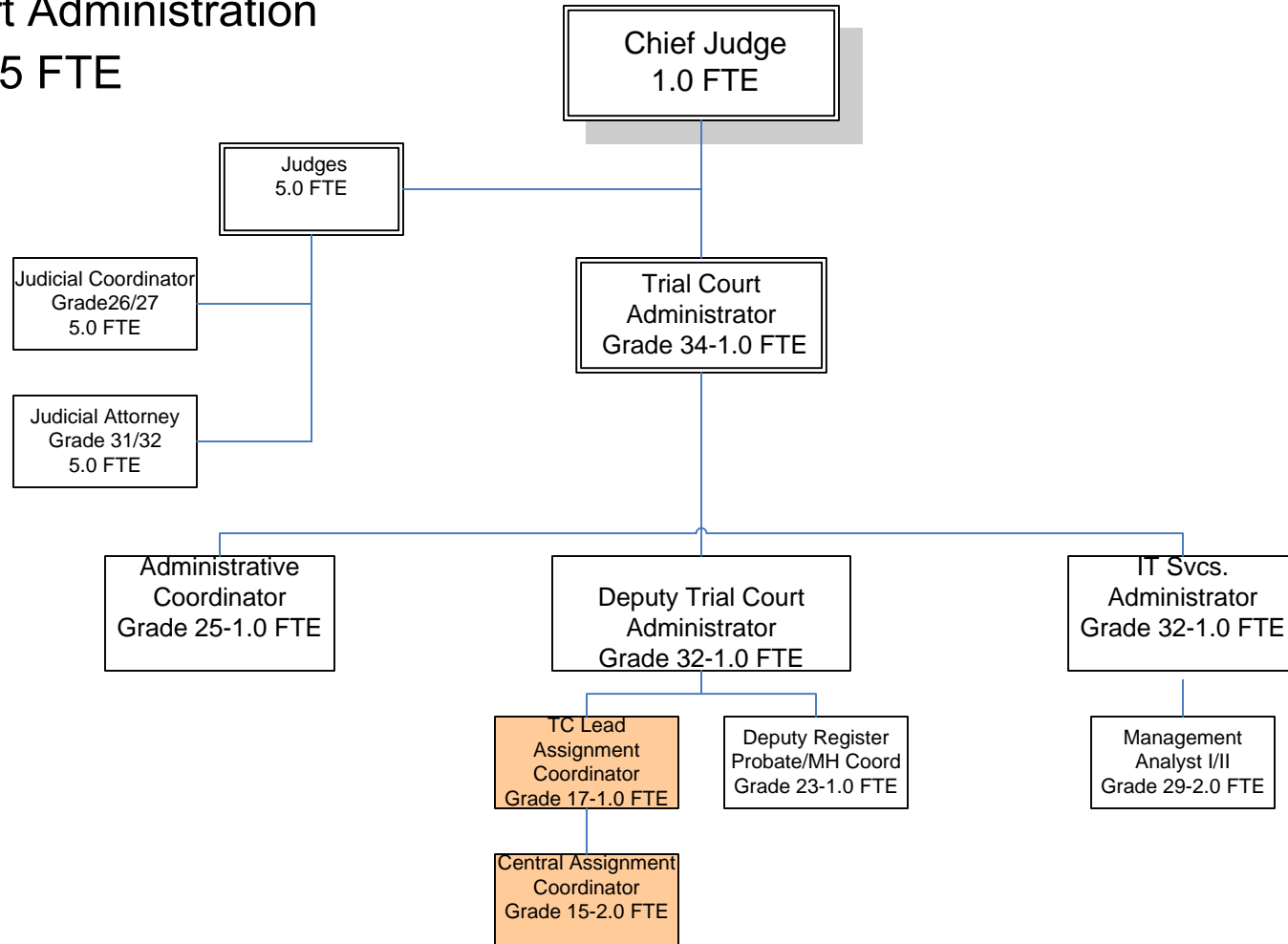
# Sheriff-290. FTE



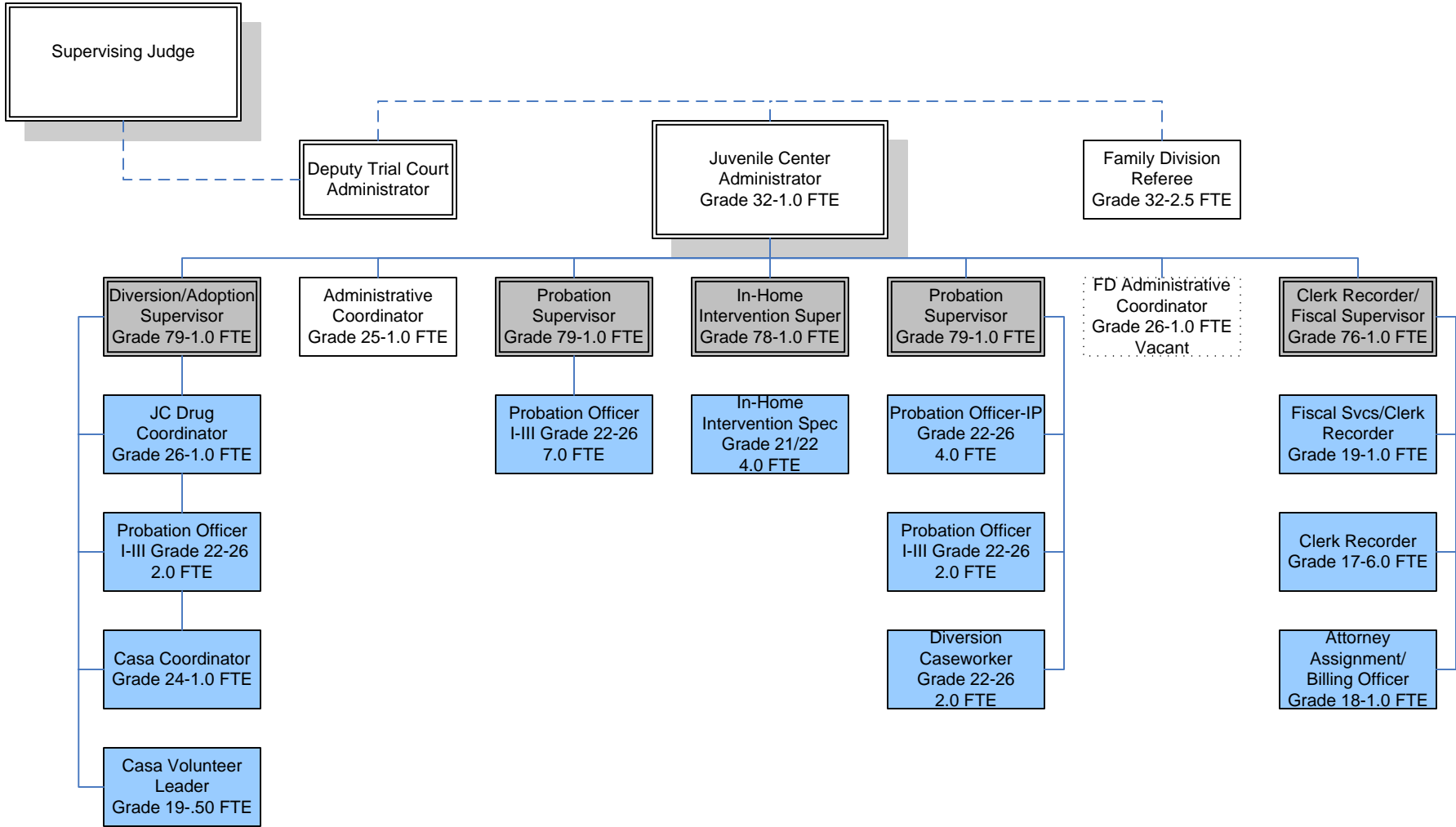
# Treasurers Office-16.5 FTE



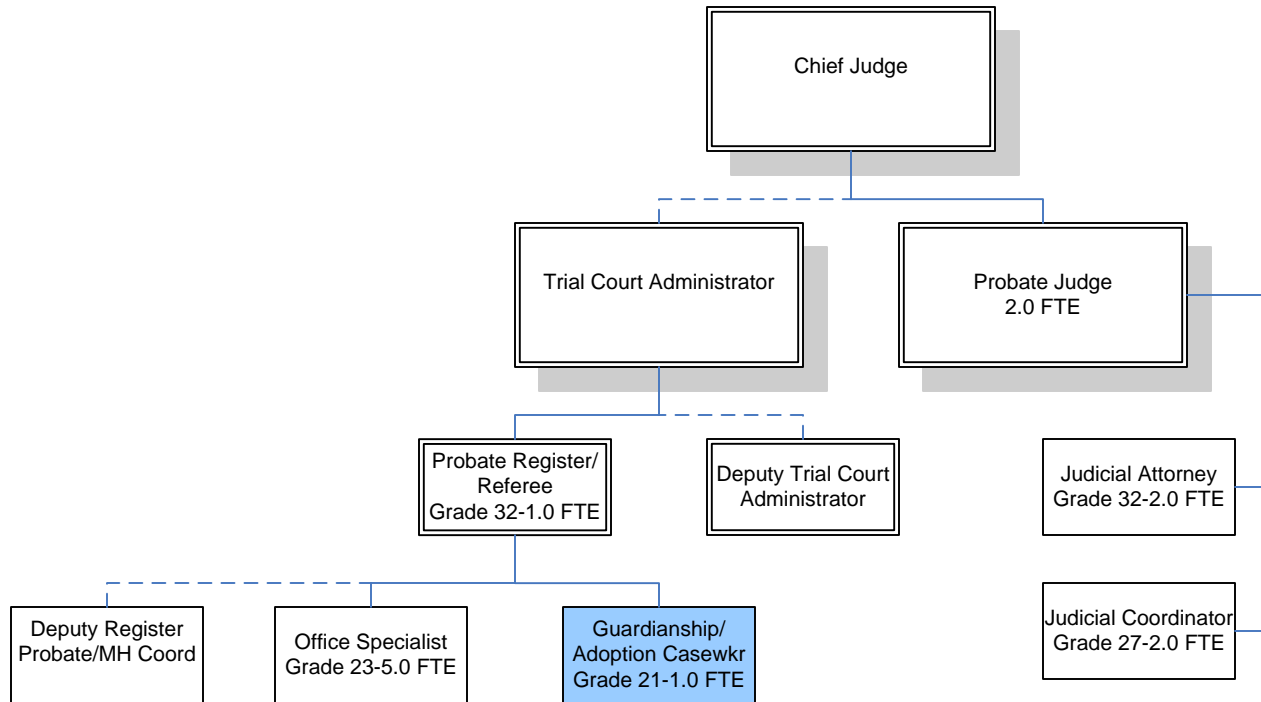
# Trial Court Administration 25 FTE



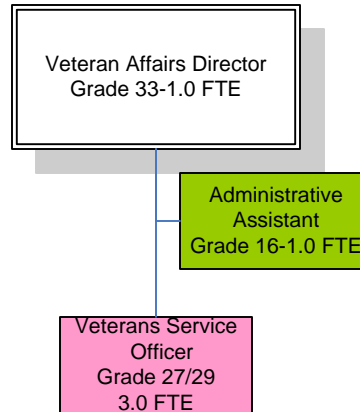
# Trial Court-Juvenile Division-42 FTE



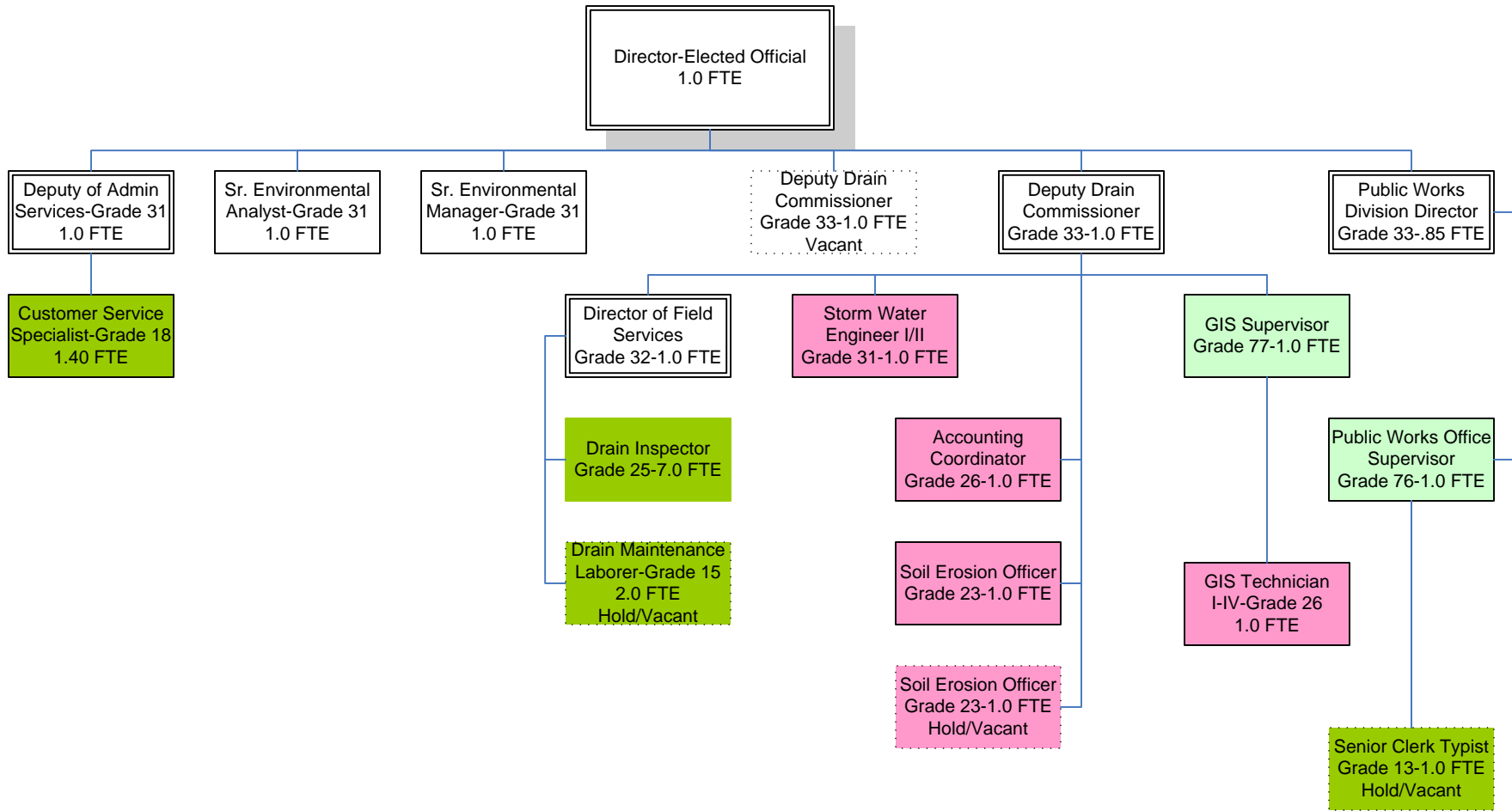
# Trial Court-Probate Division-13 FTE



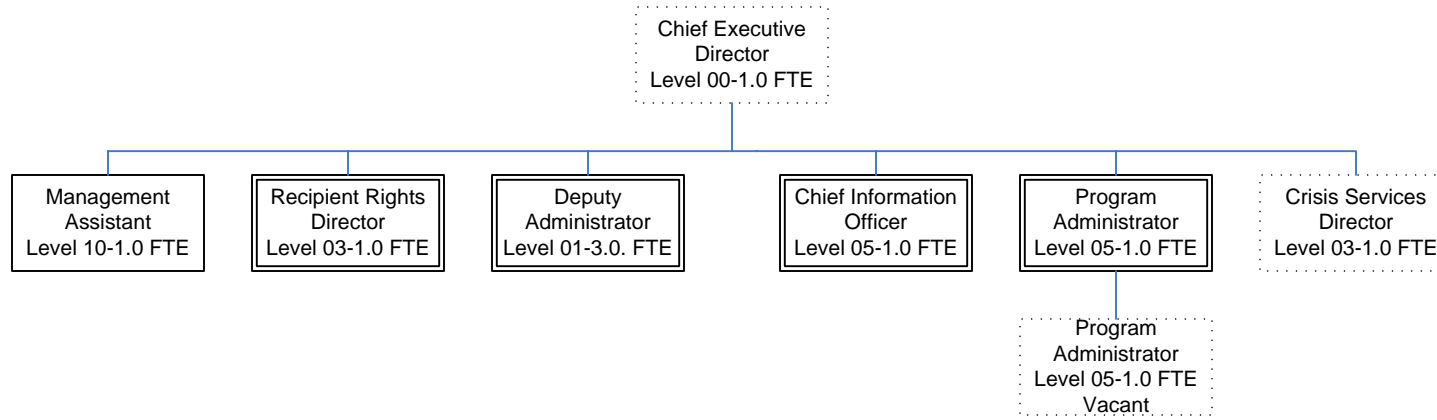
# Veteran Affairs-5.0 FTE



# Office of the Water Resources Commissioner-26.25 FTE

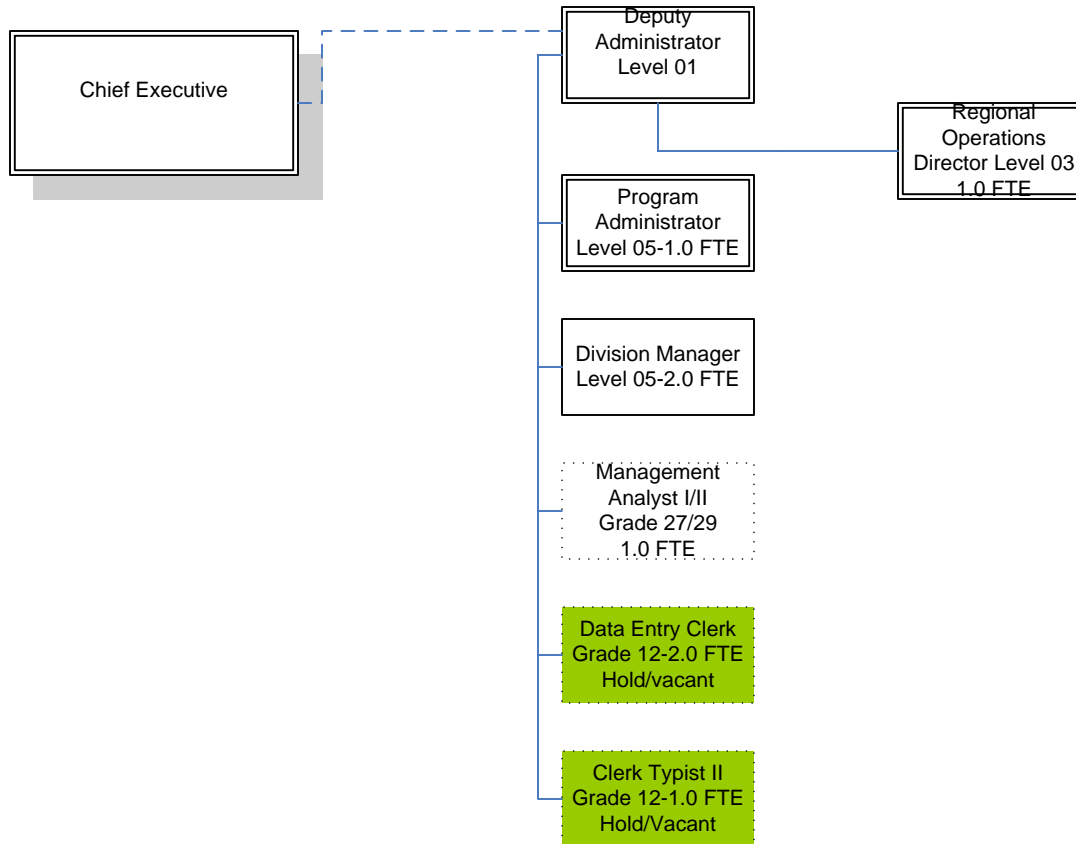


# Washtenaw Community Health Organization (WCHO)-10.0 FTE

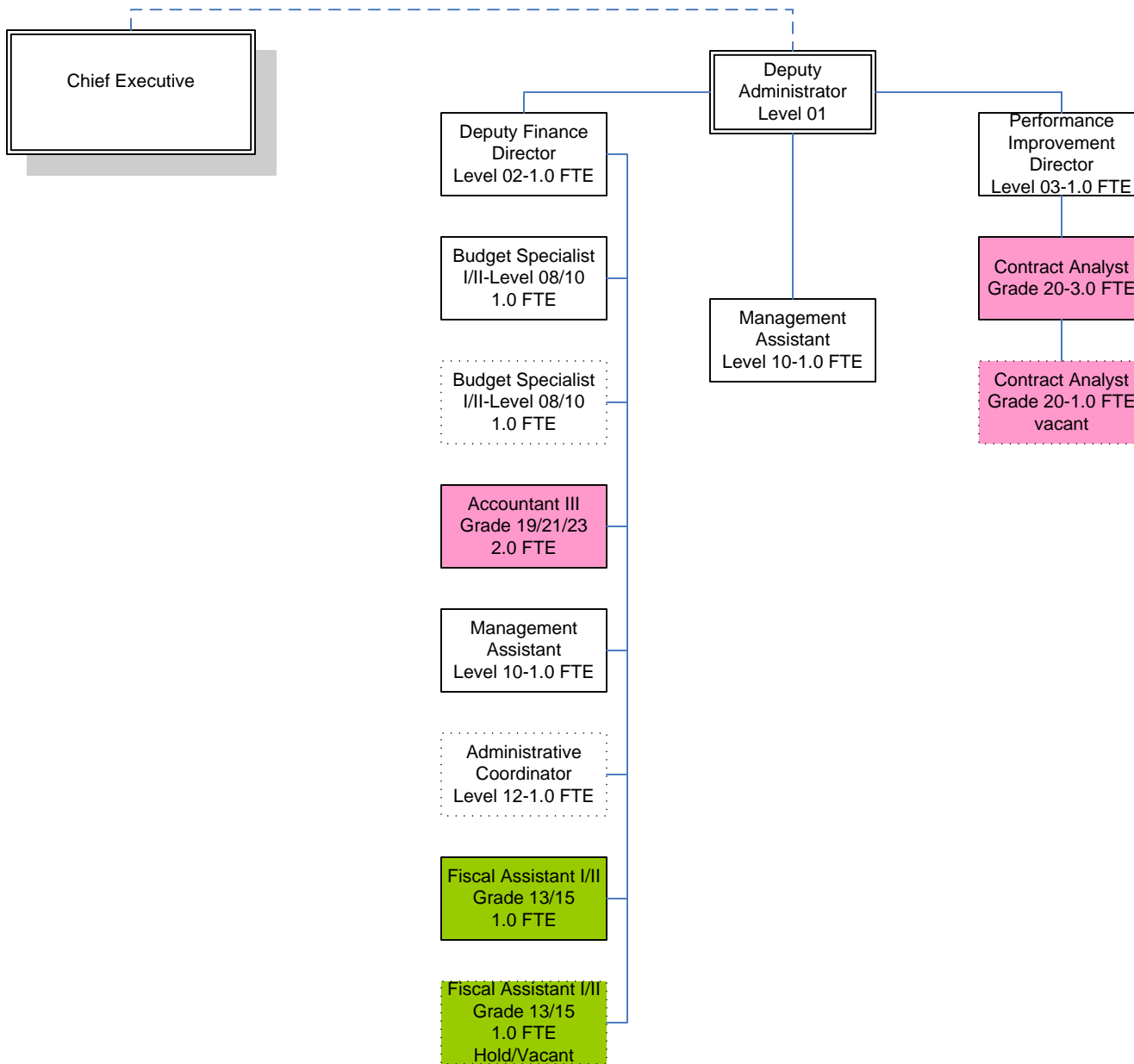


All WCHO employees are leased to the WCHO from the County and all positions are under the auspices of the WCHO Board of Directors.

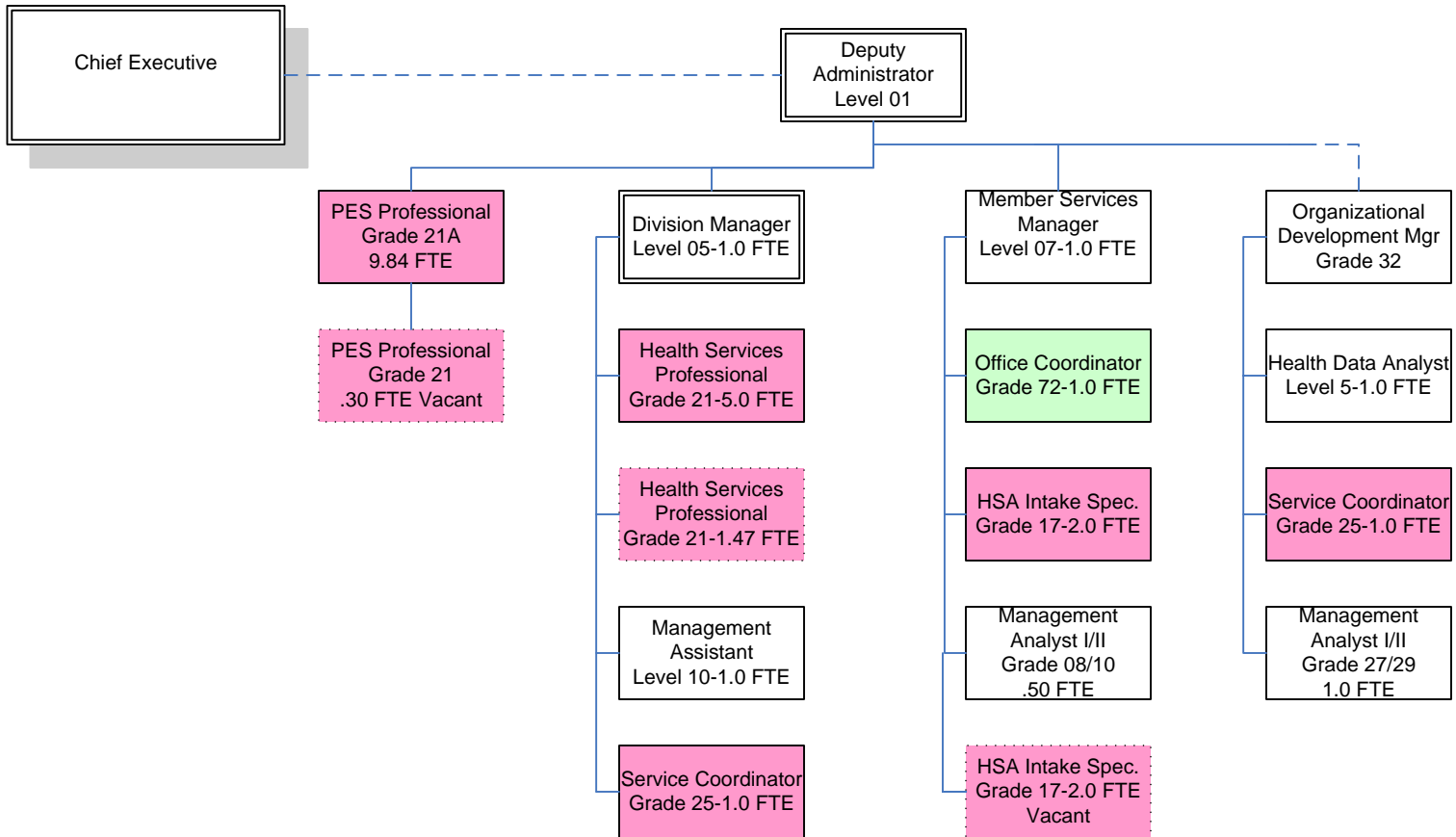
# WCHO-Development & Compliance-8.0 FTE



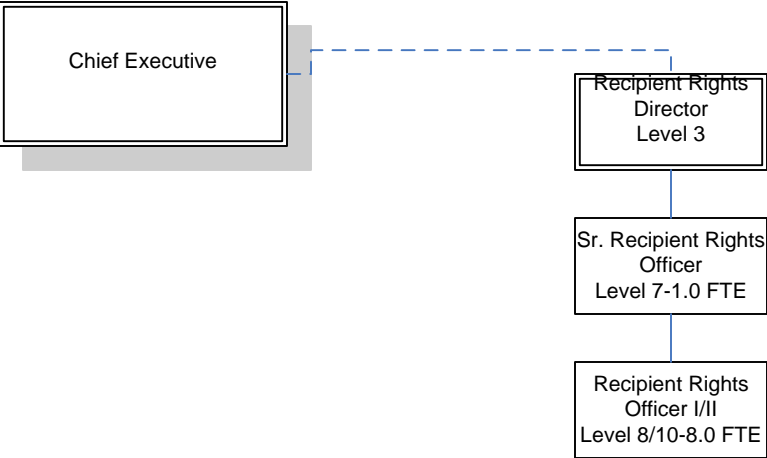
# WCHO-Finance-15.0 FTE



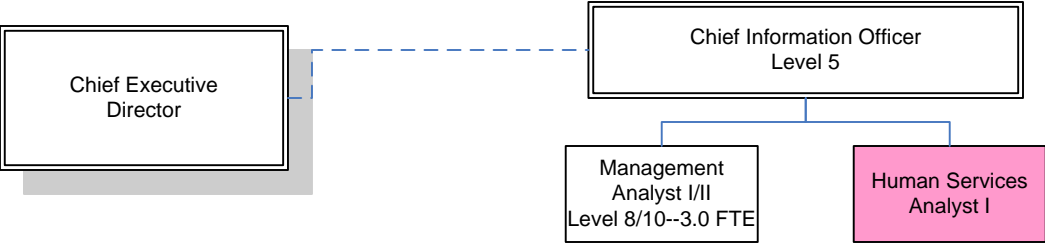
# WCHO-Operations-29.11 FTE



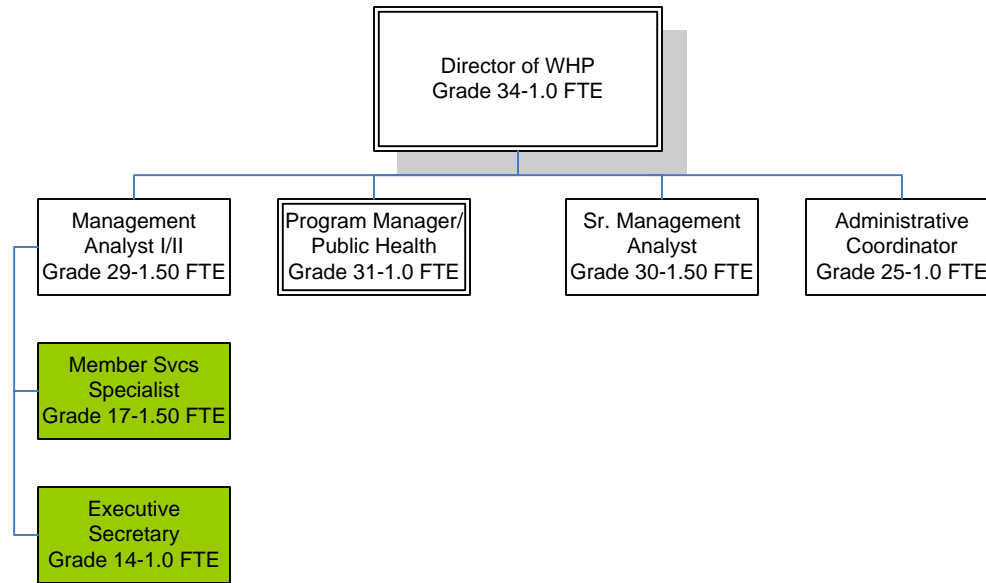
# WCHO-Recipient Rights-9.0 FTE



# WCHO-Information Management-4.0 FTE



# Washtenaw Health Plan-8.5 FTE



All WHP employees are leased to the WHP from the County and all positions are under the auspices of the WHP Board of Directors.