



Washtenaw County Sheriff's Office

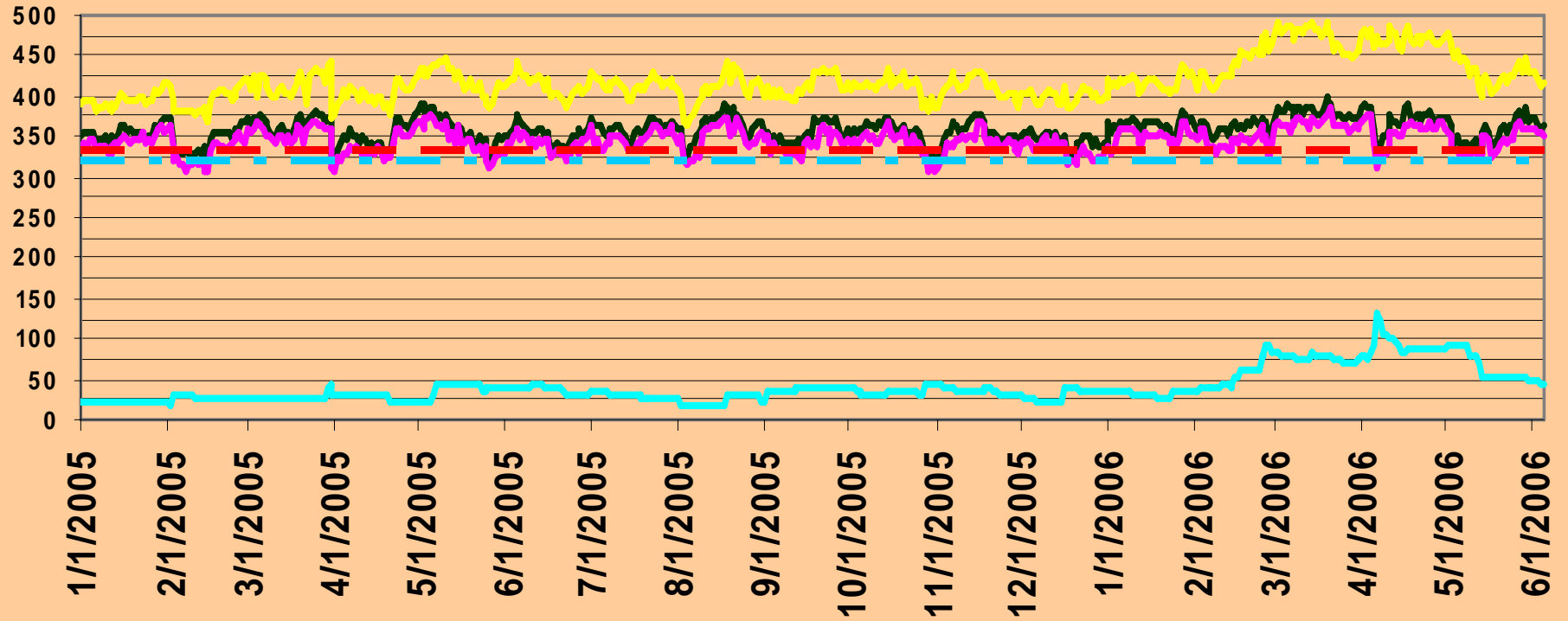
Jail Overcrowding

Inmate Population

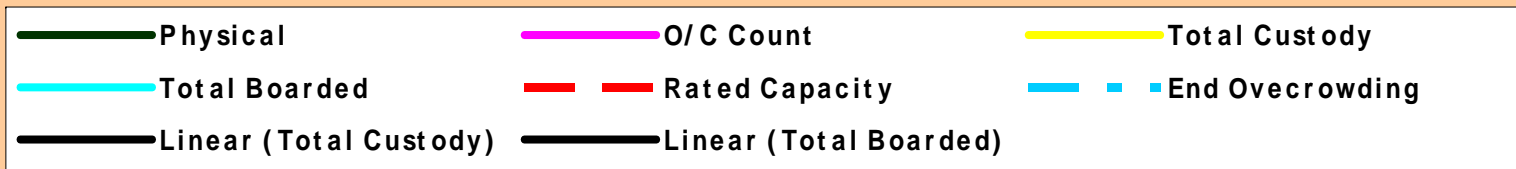
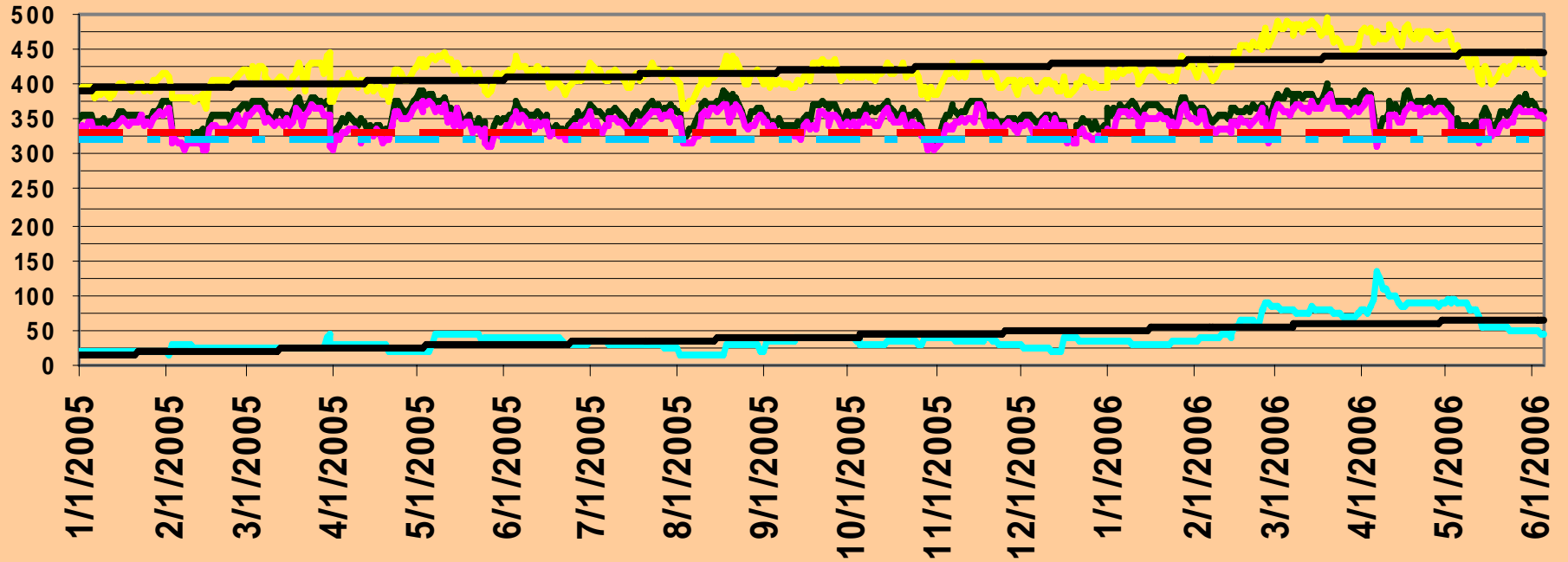


- Three Different Population Counts
 - Total Physical Population
 - Total inmates held in jail facility.
 - Overcrowding Count
 - Total inmates held in jail less any pre-arraignment inmates.
 - Total Inmates in Custody of Sheriff
 - Total number of inmates charged to the custody of the Sheriff regardless of location held.
 - Includes inmates in jail, hospital, boarded inmates and inmates out to other jurisdictions

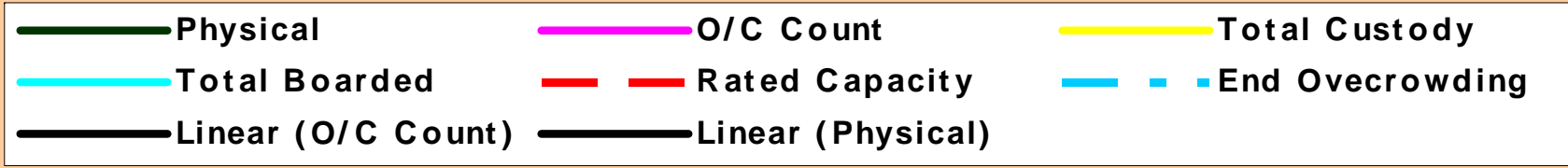
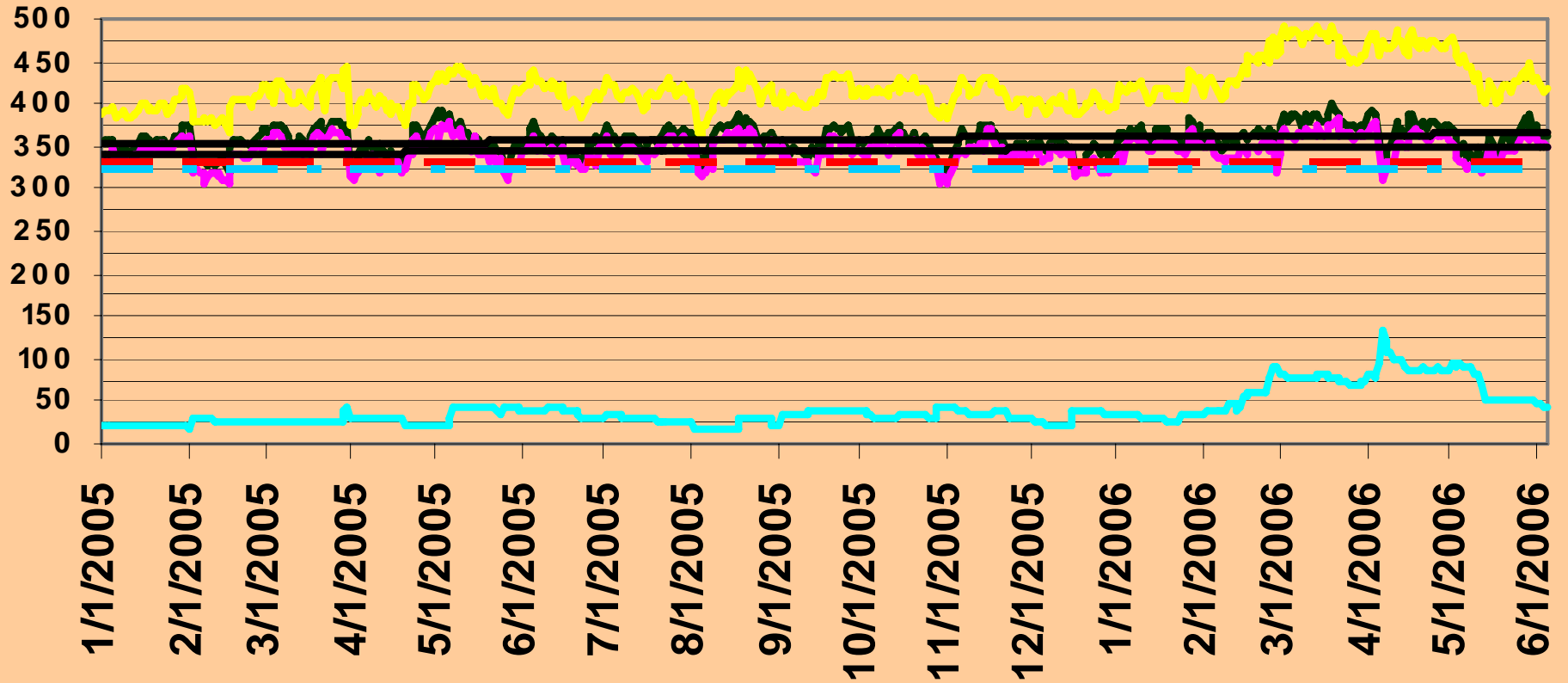
Population 18 Month History



Population 18 Month History

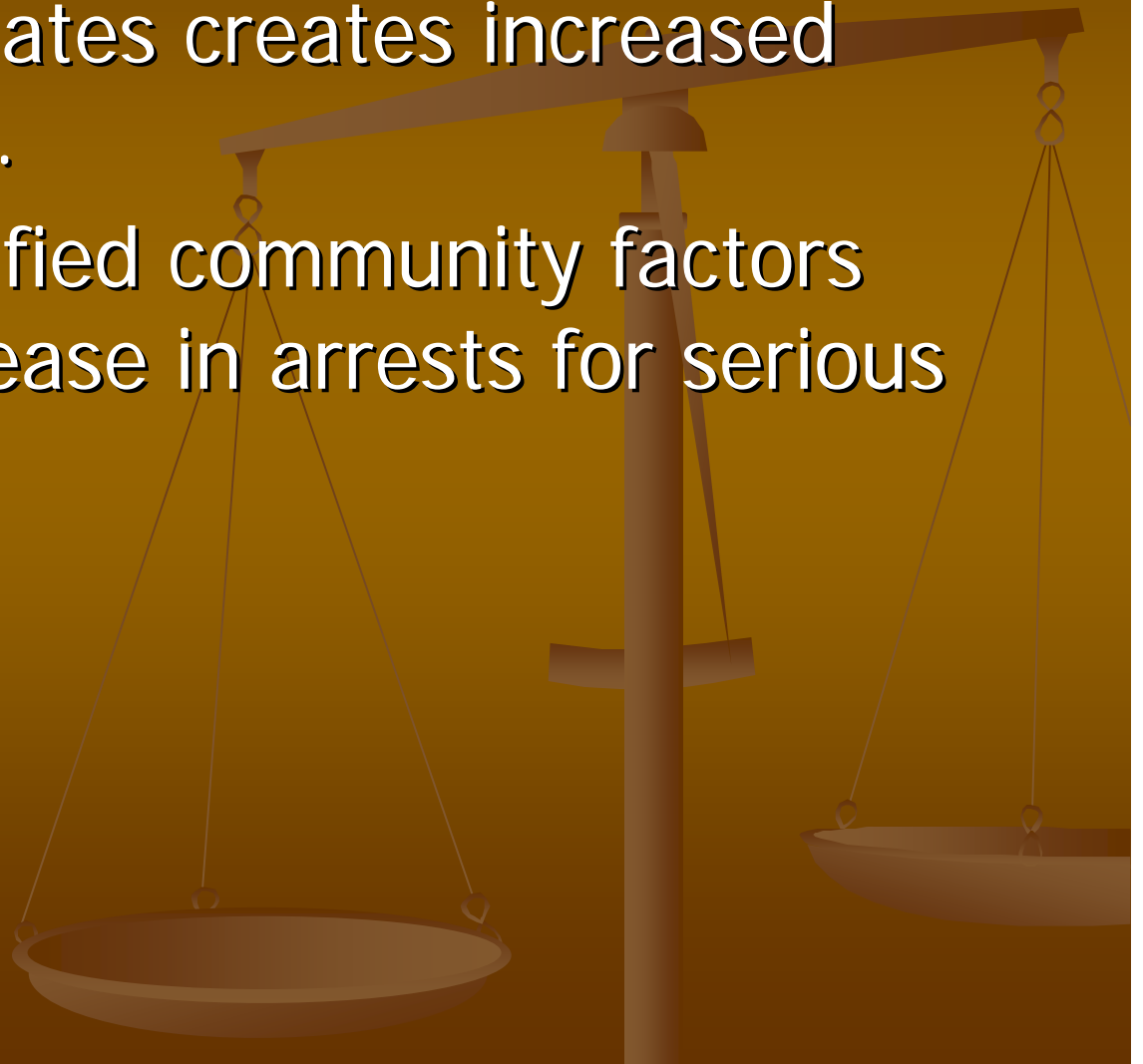


Population 18 Month History



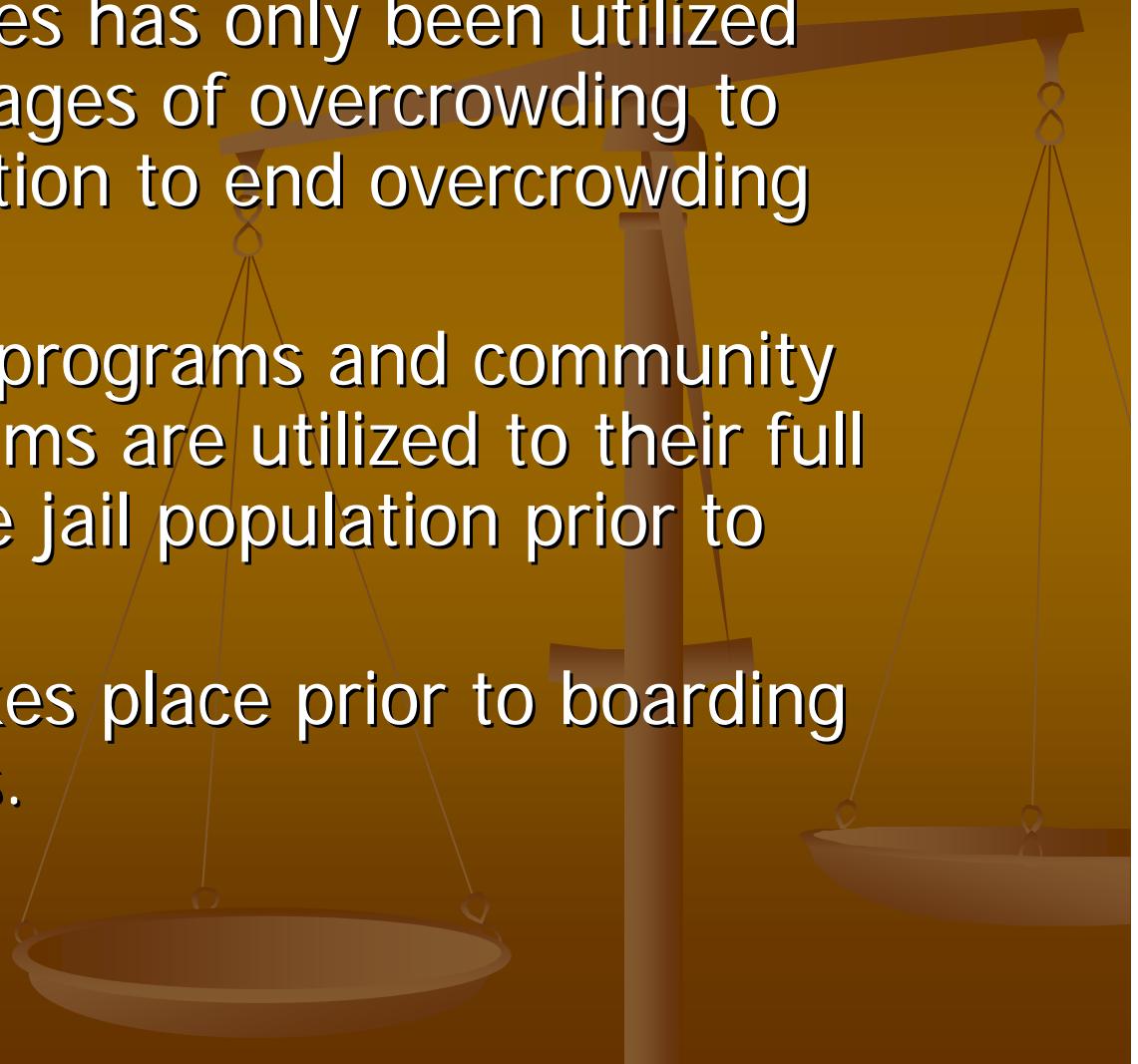
Reasons for Increase

- Boarding of inmates creates increased inmate capacity.
- Other un-quantified community factors indicate an increase in arrests for serious crimes.

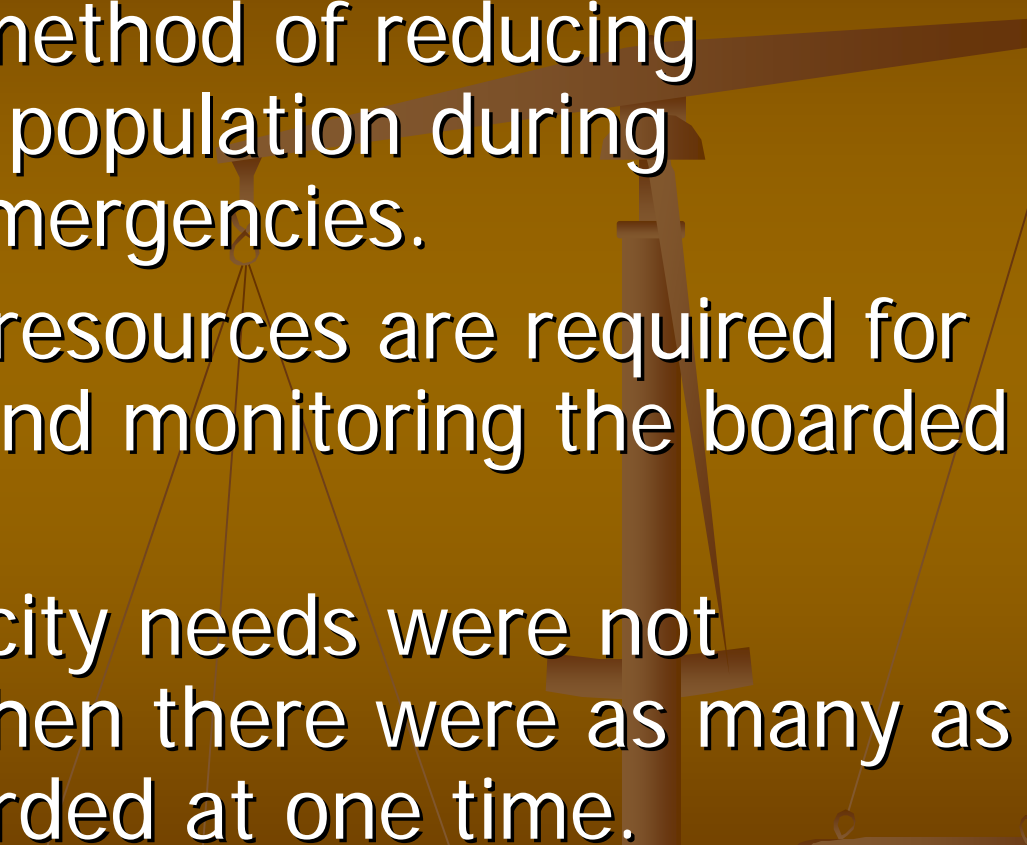


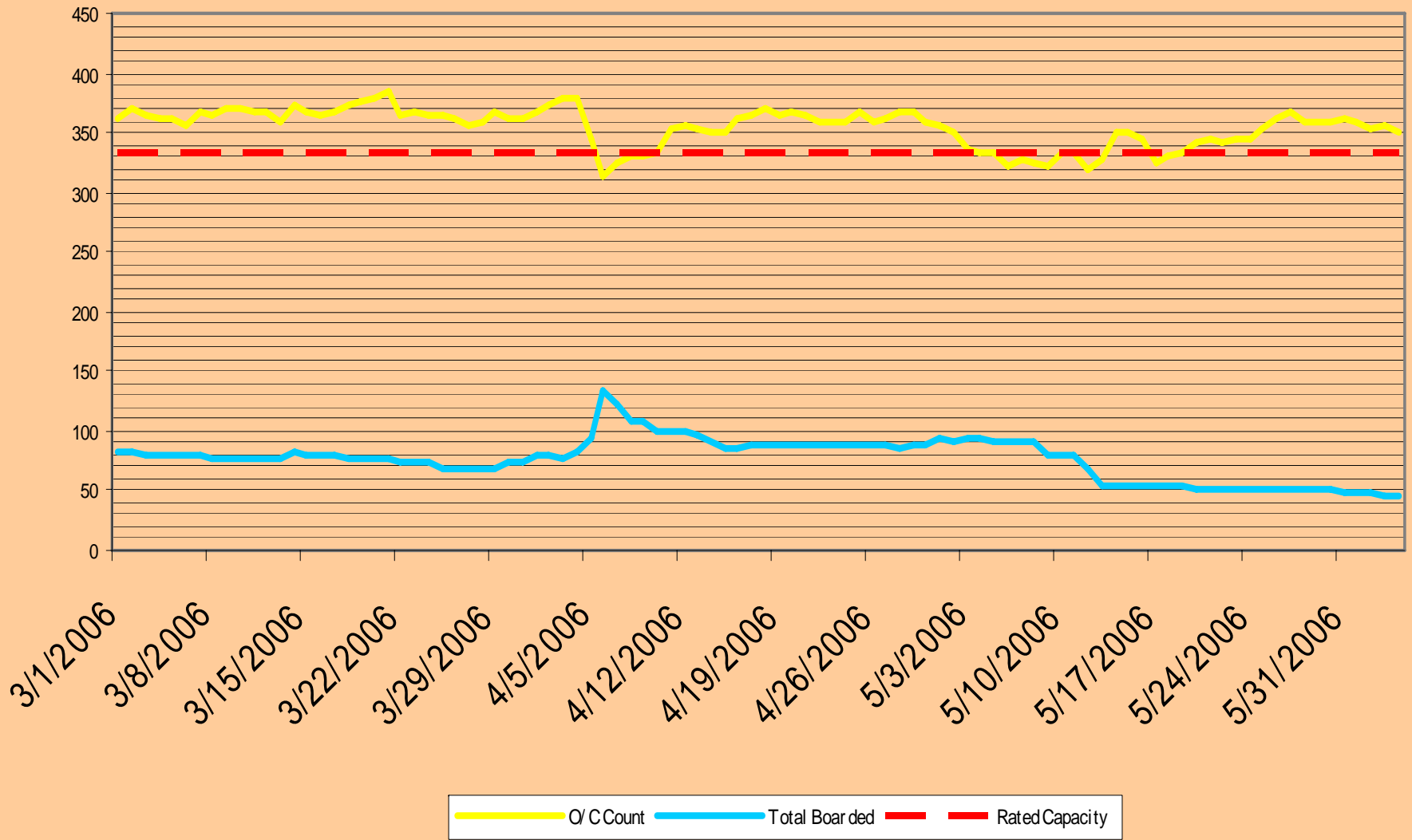
Boarding Decisions

- Boarding of inmates has only been utilized during the final stages of overcrowding to reduce jail population to end overcrowding emergencies.
- All alternative jail programs and community corrections programs are utilized to their full extent to decrease jail population prior to boarding.
- Judicial review takes place prior to boarding additional inmates.



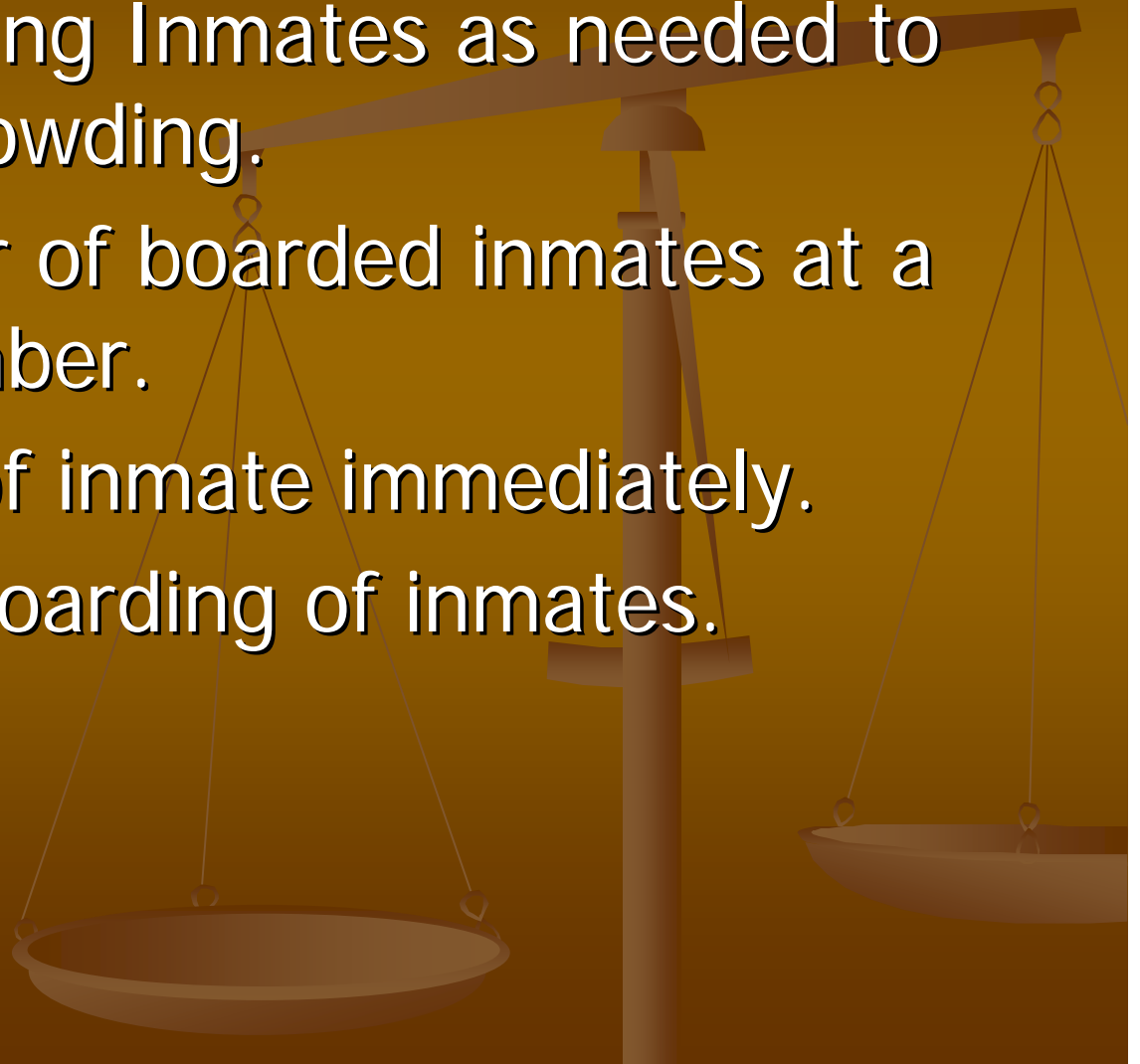
What we have learned about inmate boarding

- Is an effective method of reducing physical inmate population during overcrowding emergencies.
 - Additional staff resources are required for transportation and monitoring the boarded inmates.
 - Future jail capacity needs were not realized even when there were as many as 133 inmate boarded at one time.
- 



Options

- Continue Boarding Inmates as needed to alleviate overcrowding.
- Cap the number of boarded inmates at a designated number.
- Stop boarding of inmate immediately.
- Phase out the boarding of inmates.



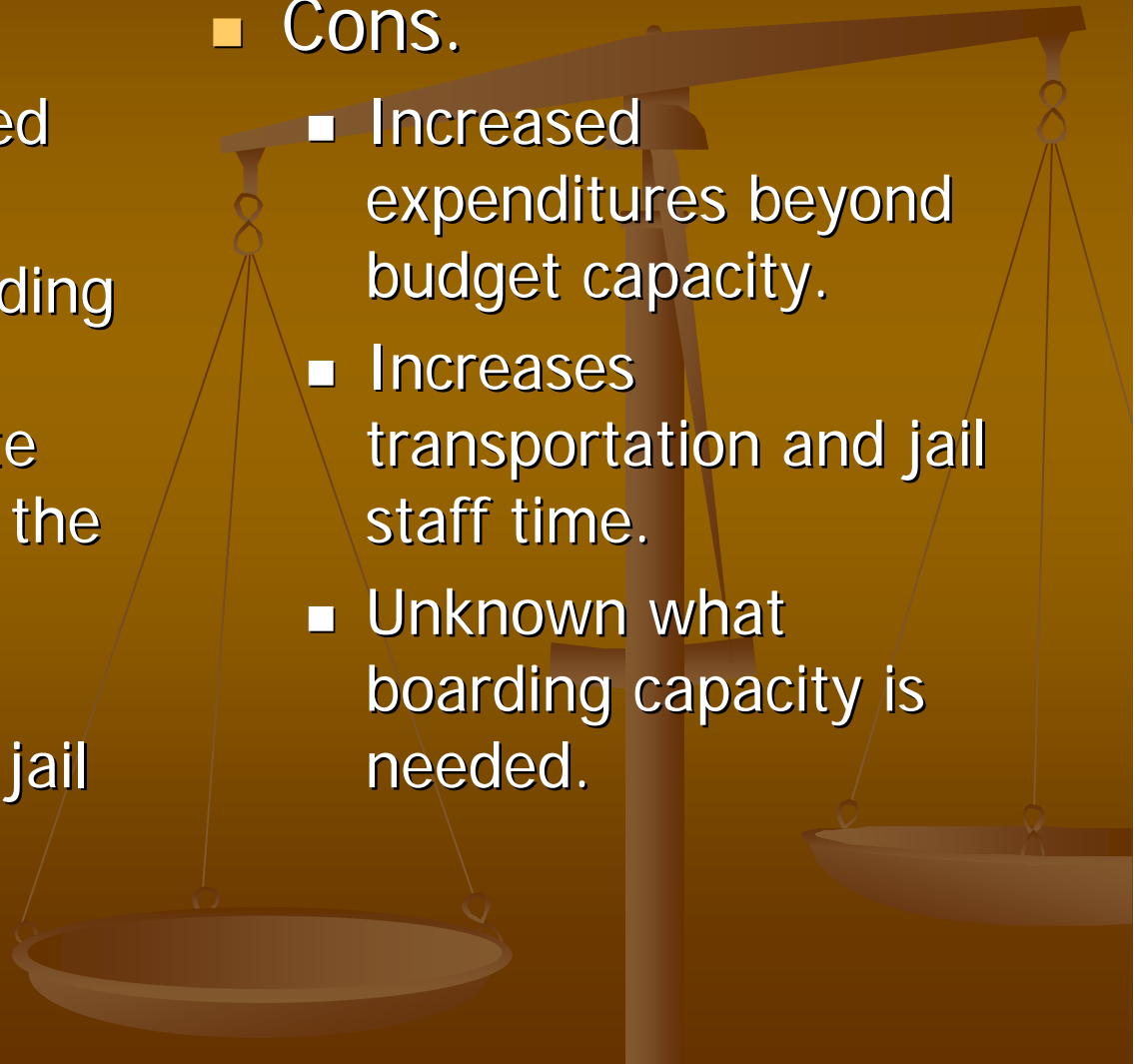
Continue Boarding Inmates

■ Pros.

- Allows for increased system capacity.
- Relieves overcrowding without additional reduction of inmate sentences outside the judicial review process.
- Keeps the door of jail open.

■ Cons.

- Increased expenditures beyond budget capacity.
- Increases transportation and jail staff time.
- Unknown what boarding capacity is needed.



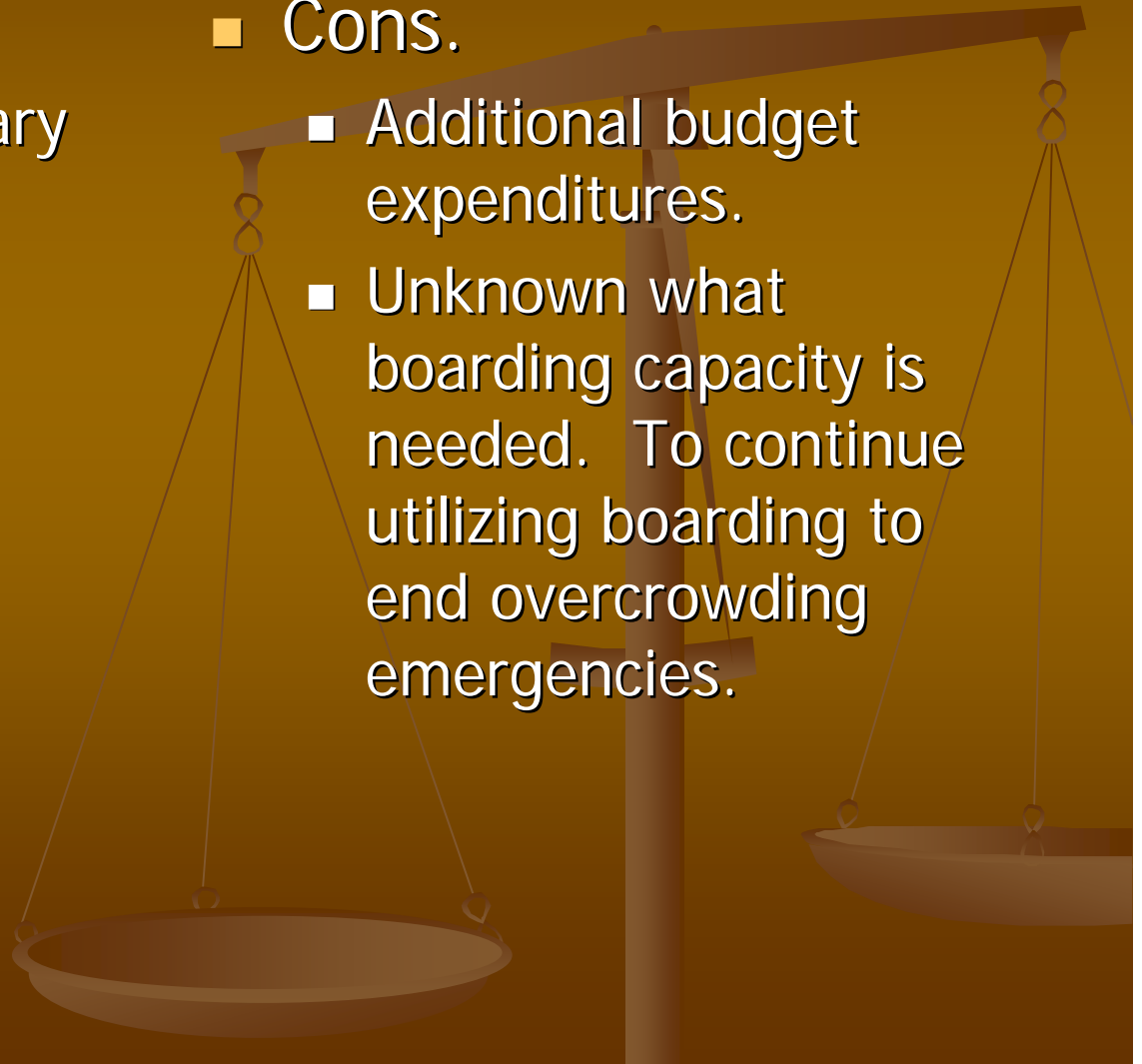
Cap the number of boarded inmates at a designated number.

■ Pros.

- Allows for budgetary control.
- Increased inmate capacity.

■ Cons.

- Additional budget expenditures.
- Unknown what boarding capacity is needed. To continue utilizing boarding to end overcrowding emergencies.



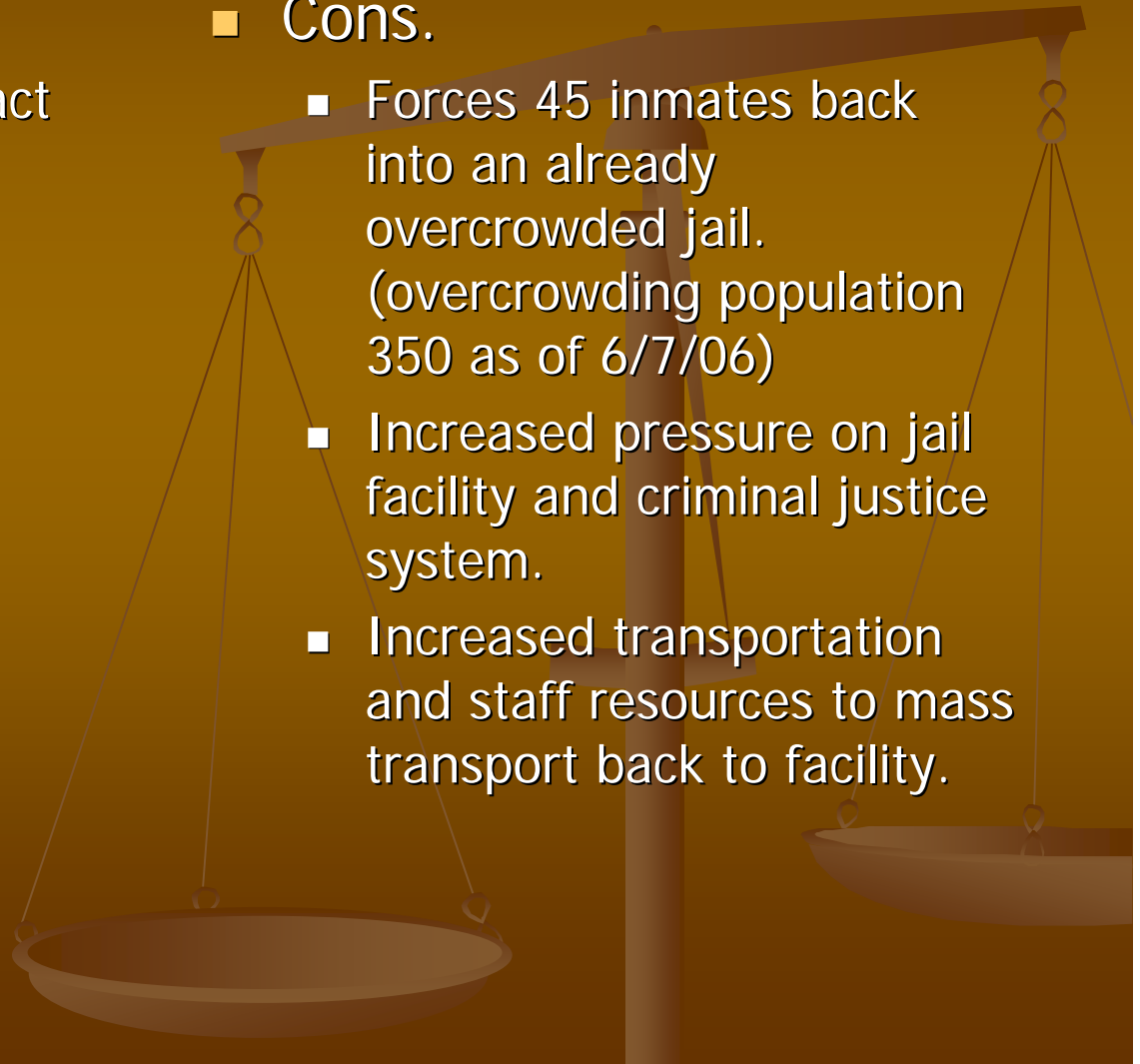
Stop boarding of inmate immediately.

■ Pros.

- Reduced Budget Impact

■ Cons.

- Forces 45 inmates back into an already overcrowded jail. (overcrowding population 350 as of 6/7/06)
- Increased pressure on jail facility and criminal justice system.
- Increased transportation and staff resources to mass transport back to facility.



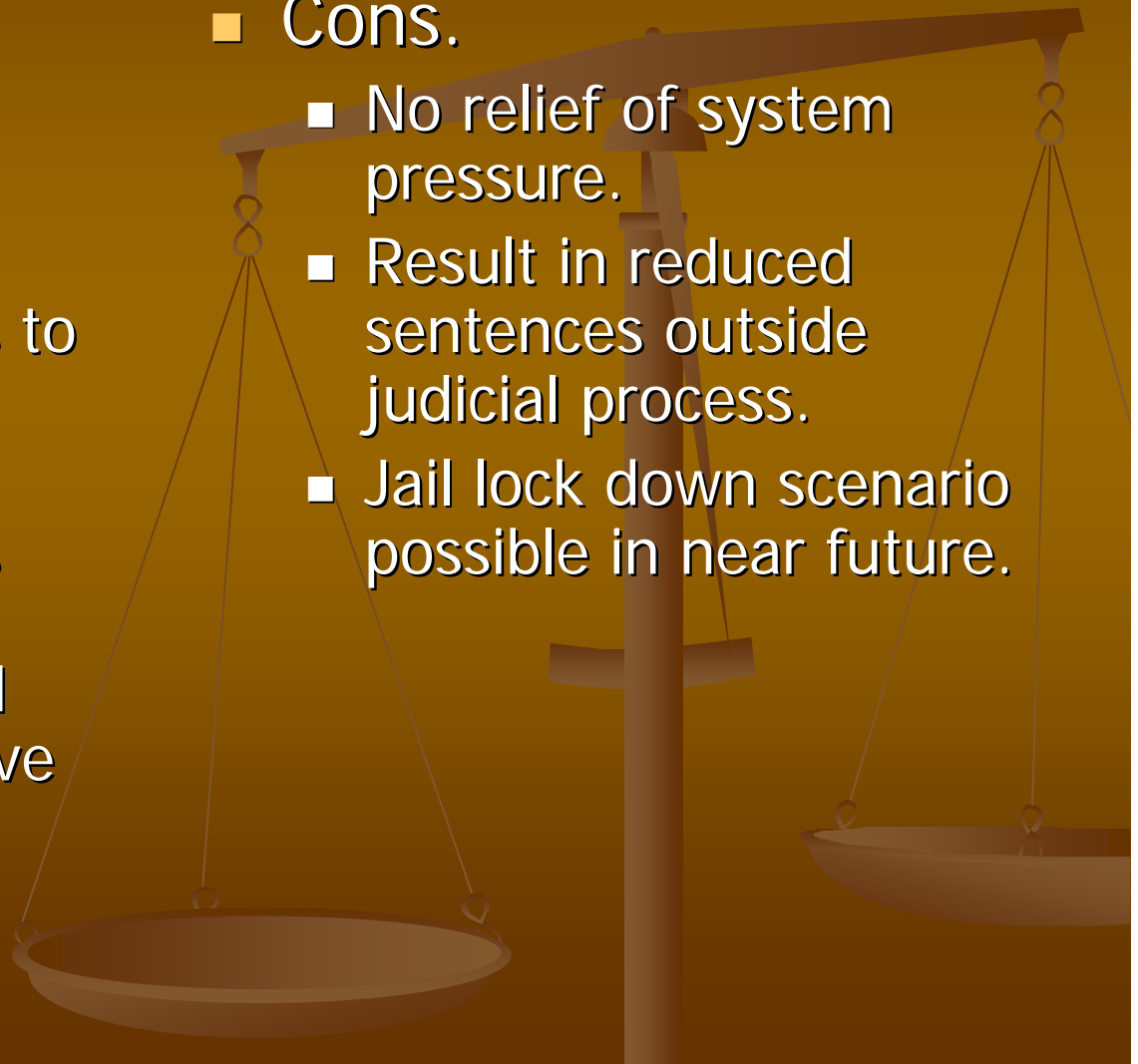
Phase out the boarding of inmates.

■ Pros.

- Allows for known budget impact.
- Doesn't add 45 additional inmates to the currently overcrowded jail.
- Operational issues related to transportation and staff resources have been planned for.

■ Cons.

- No relief of system pressure.
- Result in reduced sentences outside judicial process.
- Jail lock down scenario possible in near future.



Recommendations

- Adopt the Administrator's recommendations.
- Closely monitor the situation over the next three months.
- Act on system recommendations after review in three months.
- Utilize information learned during the past 18 months when planning for future solutions to jail space needs.

