

Parks and Recreation

This section contains information on parks and recreation facilities within Washtenaw County. Information in this section was gathered from various parks and recreation departments, as well as from the 1998 land use inventory conducted by the County Planning Department.

Total Distribution of Park Lands

Jurisdiction	Total Acres
State Lands	17,611
Huron-Clinton Metropark Authority	1,539
Washtenaw County Parks	1,359
Local Parks	4,022
TOTAL	24,531

Observations (please refer to the map on page 82):

- In terms of acreage, the State of Michigan is the largest provider of recreational land in the County with over 17,000 acres under State management.
- The largest areas of recreational lands left largely in their natural state is located in the northwest portion of the County, in the Waterloo and Pinckney State Recreation Areas

Local Parks Within the County

Jurisdiction	Acres
City of Ann Arbor	3,502
City of Milan	12
City of Saline	145
City of Ypsilanti	134
Pittsfield Township	229
Ypsilanti Township	n/a
TOTAL	4,022

- Local parks are the second largest contributor of parks and recreational lands in the County
- The largest concentration of small, local parks is located within the City of Ann Arbor
- Pittsfield and

Ypsilanti Townships manage their own local parks, and many other townships have parks and recreation commissions to plan for future needs.



Independence Lake Park, one of the Washtenaw County's recreational facilities

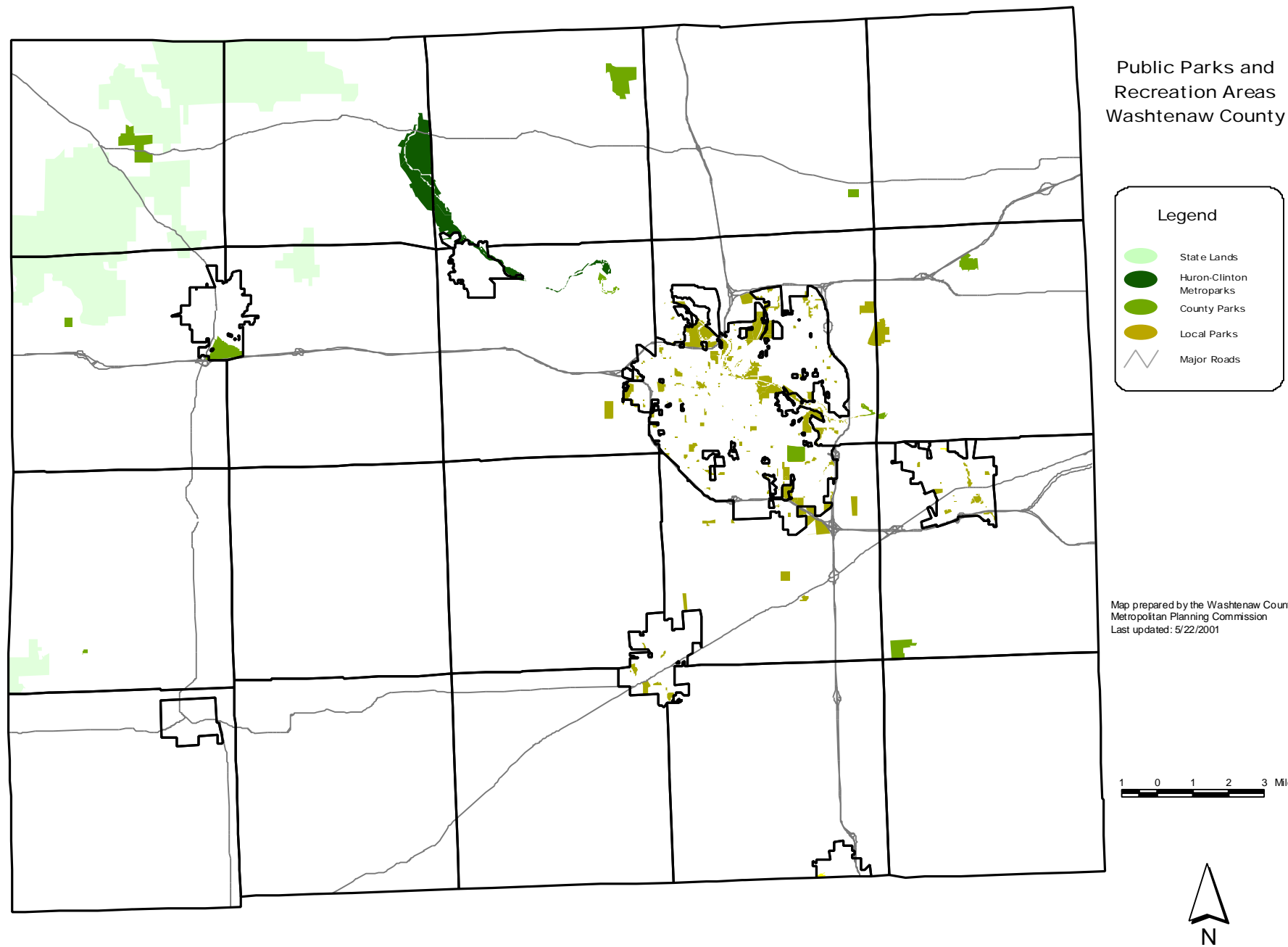
State Lands in Washtenaw County

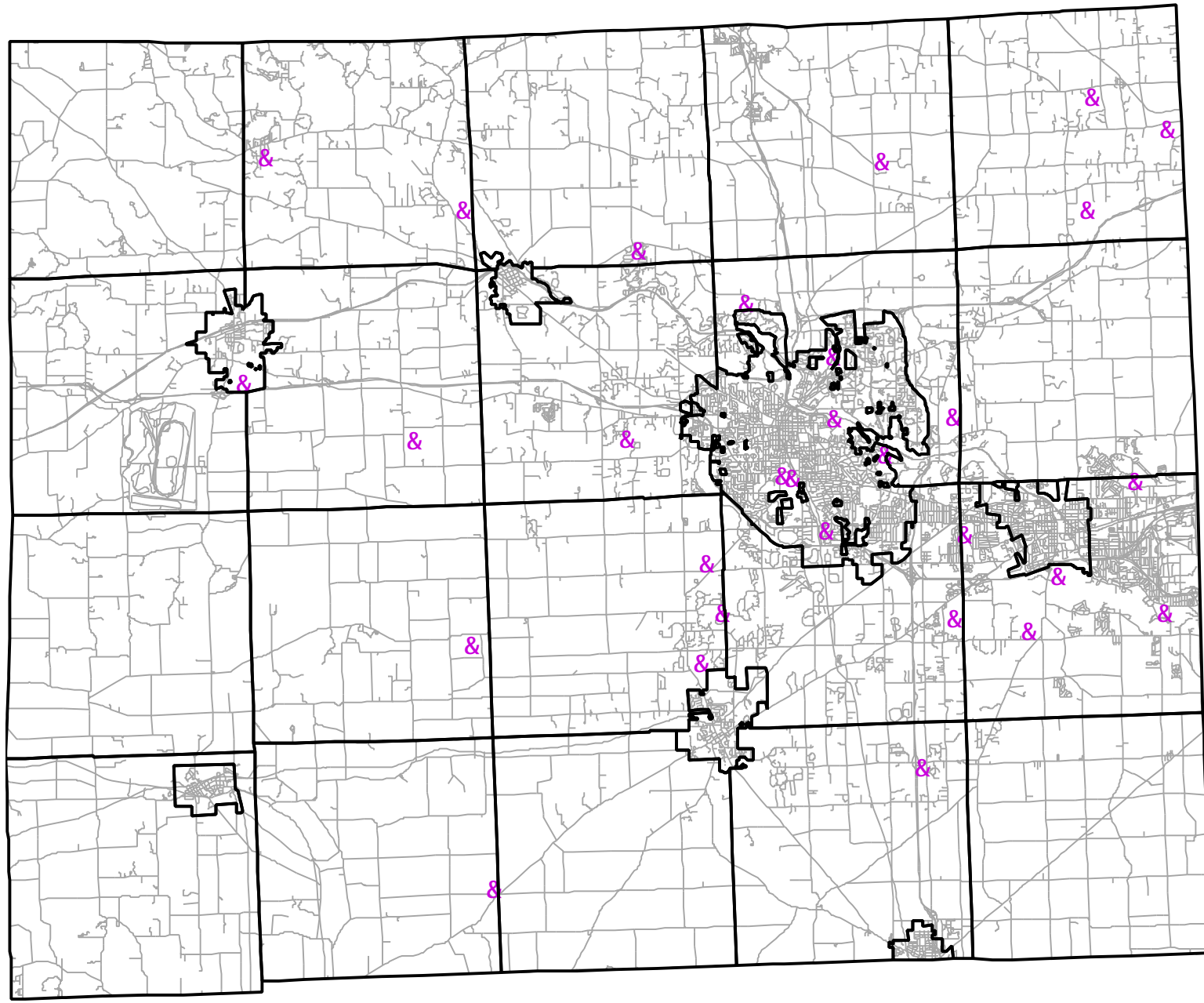
Name	Acres
Pinckney State Recreation Area	7,201
Waterloo State Recreation Area	9,195
Chelsea State Game Area	623
Sharonville State Wildlife Area	591
<i>TOTAL</i>	17,611

- The Waterloo State Recreation Area, located in Lyndon and Sylvan Townships, is the largest state recreation area in the County at over 9,100 acres.
- The largest Washtenaw County Parks are Park Lyndon in Lyndon Township, Pierce Lake Golf Course in Chelsea and Independence Lake Park in Webster Township
- As shown in the map on page 83, golf courses provide significant recreational opportunities throughout the County. There are currently 30 publicly accessible golf courses in Washtenaw County.

Washtenaw County Parks

Name	Acres
Park Lyndon	335
Pierce Lake	232
Cavanaugh Lake	3
Sharon Mills	6
Independence Lake	312
Osborne Mills	39
Park Northfield	12
Staebler Farm	98
Parker Mill Park	44
County Farm Park	127
Rolling Hills	151
<i>TOTAL</i>	1359





Public Golf Courses
Washtenaw County

Legend

- & Golf Course
- Political Boundaries
- Major Roads

Map prepared by the Washtenaw County
Metropolitan Planning Commission
Last updated: 5/22/2001

