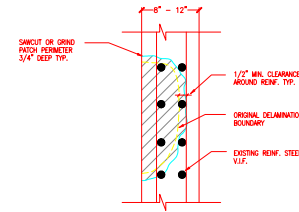


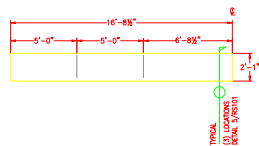
- NOTES:
1. CAVITY SURFACE DIMENSIONS VARY.
 2. CONTRACTOR SHALL REMOVE AND REPLACE ALL CONCRETE IN HATCHED AREA.
 3. PATCH MATERIAL SHALL BE TROWEL APPLIED MORTAR FOR CEILING.
 4. PATCH LOCATIONS SHALL BE AS MARKED BY ENGINEER IN FIELD.
 5. N.I.C. - NOT IN CONTRACT.

1 CEILING SURFACE REPAIRS
RS103 SHALLOW REMOVAL / DEEP REMOVAL



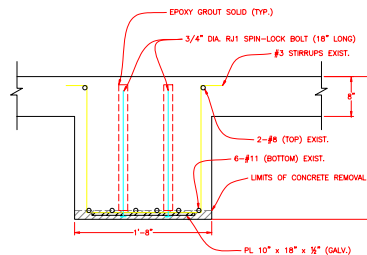
- NOTES:
1. CAVITY DIMENSIONS VARY.
 2. PATCH DEPTH 2" TO 4".
 3. CONTRACTOR SHALL REMOVE ALL SOUND AND UNSOUND CONCRETE IN HATCHED AREA.
 4. PATCH LOCATIONS TO BE AS MARKED BY FIELD OF THE PROJECT ENGINEER.
 5. EPOXY COAT REINF. IS INCIDENTAL TO WORK.
 6. PATCH MATERIAL TO BE LMC OR TROWEL APPLIED MORTAR.

2 WALL REPAIR
RS103



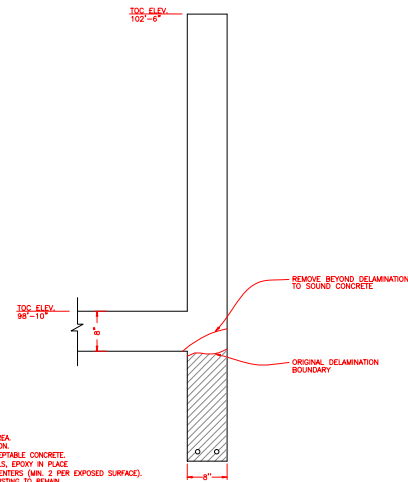
- NOTES:
1. REPAIRS ARE SYMMETRIC ABOUT CENTERLINE.

3 ELEVATION OF BEAM B5 - D4 REPAIRS
RS103



- NOTES:
1. SLAB REINFORCING NOT SHOWN FOR CLARITY.
 2. SPIN-LOCK BOLTS TO BE FIELD LOCATED TO AVOID REINFORCING STEEL AND SHALL HAVE A MIN. 3" CONCRETE COVER TO THE BEAM EDGES.
 3. DRILL HOLE FOR SPIN-LOCK BOLT 1" LONGER THAN BOLT LENGTH.
 4. CONCRETE SHALL BE PATCHED AFTER INSTALLATION OF PLATE ASSEMBLY.

4 SECTION
RS103



- NOTES:
1. SHORE SLAB / BEAM AREA.
 2. REMOVE DAMAGED SECTION.
 3. REMOVE LOOSE / SUSCEPTIBLE CONCRETE.
 4. DRILL IN NEW #5 CORNERS, EPOXY IN PLACE.
 5. TIE IN NEW STEEL - EXISTING TO REMAIN.
 6. EPOXY COAT ALL BARS.
 7. FORM REPAIR.
 8. PLACE CONCRETE IN 1 LIFT, VIBRATE, USING CONCRETE SPECIFIED IN SECTION 03300, ARTICLE 2.20.
 9. REMOVE FORMS AFTER CONCRETE REACHES 75% OF DESIGN STRENGTH.
 10. REMOVE SHORING AFTER 21 DAYS.
 11. COAT CONCRETE TO MATCH EXISTING AFTER 30 DAYS, OR PER COATING MANUFACTURER'S RECOMMENDATIONS.

5 SECTION
RS103

**PARKING STRUCTURE
EVALUATION & REPAIRS**
WASHTENAW COUNTY, MICHIGAN
ANN ARBOR COURTHOUSE
• 101 EAST HURON •

Dan Joseph Architects
P.O. B. 40 - Manchester, MI 48158
Ph: 734.428.1907 - Fx: 734.428.3773

SOE • PLYMOUTH •
4380 PLYMOUTH DRIVE BOULEVARD
PLYMOUTH MICHIGAN 48170-2554
(734) 454-9500; FAX (734) 454-0529
soe and materials engineers, inc.

1	08.26.04	BACKGROUND	TBS	DJ
2	08.29.04	BID SET	ARR	MM
3	08.29.04	BACKGROUND	TBS	DJ
4	08.29.04	BACKGROUND	TBS	DJ
5	08.29.04	BACKGROUND	TBS	DJ
6	08.29.04	BACKGROUND	TBS	DJ
7	08.29.04	BACKGROUND	TBS	DJ
8	08.29.04	BACKGROUND	TBS	DJ
9	08.29.04	BACKGROUND	TBS	DJ
10	08.29.04	BACKGROUND	TBS	DJ
11	08.29.04	BACKGROUND	TBS	DJ
12	08.29.04	BACKGROUND	TBS	DJ
13	08.29.04	BACKGROUND	TBS	DJ
14	08.29.04	BACKGROUND	TBS	DJ
15	08.29.04	BACKGROUND	TBS	DJ
16	08.29.04	BACKGROUND	TBS	DJ
17	08.29.04	BACKGROUND	TBS	DJ
18	08.29.04	BACKGROUND	TBS	DJ
19	08.29.04	BACKGROUND	TBS	DJ
20	08.29.04	BACKGROUND	TBS	DJ
21	08.29.04	BACKGROUND	TBS	DJ
22	08.29.04	BACKGROUND	TBS	DJ
23	08.29.04	BACKGROUND	TBS	DJ
24	08.29.04	BACKGROUND	TBS	DJ
25	08.29.04	BACKGROUND	TBS	DJ
26	08.29.04	BACKGROUND	TBS	DJ
27	08.29.04	BACKGROUND	TBS	DJ
28	08.29.04	BACKGROUND	TBS	DJ
29	08.29.04	BACKGROUND	TBS	DJ
30	08.29.04	BACKGROUND	TBS	DJ
31	08.29.04	BACKGROUND	TBS	DJ
32	08.29.04	BACKGROUND	TBS	DJ
33	08.29.04	BACKGROUND	TBS	DJ
34	08.29.04	BACKGROUND	TBS	DJ
35	08.29.04	BACKGROUND	TBS	DJ
36	08.29.04	BACKGROUND	TBS	DJ
37	08.29.04	BACKGROUND	TBS	DJ
38	08.29.04	BACKGROUND	TBS	DJ
39	08.29.04	BACKGROUND	TBS	DJ
40	08.29.04	BACKGROUND	TBS	DJ
41	08.29.04	BACKGROUND	TBS	DJ
42	08.29.04	BACKGROUND	TBS	DJ
43	08.29.04	BACKGROUND	TBS	DJ
44	08.29.04	BACKGROUND	TBS	DJ
45	08.29.04	BACKGROUND	TBS	DJ
46	08.29.04	BACKGROUND	TBS	DJ
47	08.29.04	BACKGROUND	TBS	DJ
48	08.29.04	BACKGROUND	TBS	DJ
49	08.29.04	BACKGROUND	TBS	DJ
50	08.29.04	BACKGROUND	TBS	DJ
51	08.29.04	BACKGROUND	TBS	DJ
52	08.29.04	BACKGROUND	TBS	DJ
53	08.29.04	BACKGROUND	TBS	DJ
54	08.29.04	BACKGROUND	TBS	DJ
55	08.29.04	BACKGROUND	TBS	DJ
56	08.29.04	BACKGROUND	TBS	DJ
57	08.29.04	BACKGROUND	TBS	DJ
58	08.29.04	BACKGROUND	TBS	DJ
59	08.29.04	BACKGROUND	TBS	DJ
60	08.29.04	BACKGROUND	TBS	DJ
61	08.29.04	BACKGROUND	TBS	DJ
62	08.29.04	BACKGROUND	TBS	DJ
63	08.29.04	BACKGROUND	TBS	DJ
64	08.29.04	BACKGROUND	TBS	DJ
65	08.29.04	BACKGROUND	TBS	DJ
66	08.29.04	BACKGROUND	TBS	DJ
67	08.29.04	BACKGROUND	TBS	DJ
68	08.29.04	BACKGROUND	TBS	DJ
69	08.29.04	BACKGROUND	TBS	DJ
70	08.29.04	BACKGROUND	TBS	DJ
71	08.29.04	BACKGROUND	TBS	DJ
72	08.29.04	BACKGROUND	TBS	DJ
73	08.29.04	BACKGROUND	TBS	DJ
74	08.29.04	BACKGROUND	TBS	DJ
75	08.29.04	BACKGROUND	TBS	DJ
76	08.29.04	BACKGROUND	TBS	DJ
77	08.29.04	BACKGROUND	TBS	DJ
78	08.29.04	BACKGROUND	TBS	DJ
79	08.29.04	BACKGROUND	TBS	DJ
80	08.29.04	BACKGROUND	TBS	DJ
81	08.29.04	BACKGROUND	TBS	DJ
82	08.29.04	BACKGROUND	TBS	DJ
83	08.29.04	BACKGROUND	TBS	DJ
84	08.29.04	BACKGROUND	TBS	DJ
85	08.29.04	BACKGROUND	TBS	DJ
86	08.29.04	BACKGROUND	TBS	DJ
87	08.29.04	BACKGROUND	TBS	DJ
88	08.29.04	BACKGROUND	TBS	DJ
89	08.29.04	BACKGROUND	TBS	DJ
90	08.29.04	BACKGROUND	TBS	DJ
91	08.29.04	BACKGROUND	TBS	DJ
92	08.29.04	BACKGROUND	TBS	DJ
93	08.29.04	BACKGROUND	TBS	DJ
94	08.29.04	BACKGROUND	TBS	DJ
95	08.29.04	BACKGROUND	TBS	DJ
96	08.29.04	BACKGROUND	TBS	DJ
97	08.29.04	BACKGROUND	TBS	DJ
98	08.29.04	BACKGROUND	TBS	DJ
99	08.29.04	BACKGROUND	TBS	DJ
100	08.29.04	BACKGROUND	TBS	DJ

REPAIR DETAILS
RS103
03.25.04 DLW/RS-23 © 2004 Dan Joseph Architects