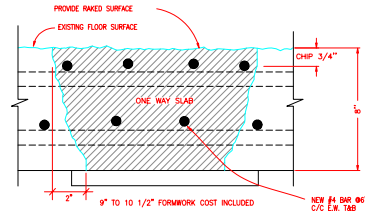


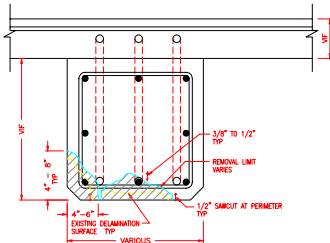
- NOTES:
1. CAVITY SURFACE DIMENSIONS VARY.
 2. CONTRACTOR SHALL REMOVE AND REPLACE ALL SOUND AND UNSOUND CONCRETE IN HATCHED AREA.
 3. PATCH MATERIAL SHALL BE MICROSILICA CONCRETE.
 4. PATCH LOCATIONS SHALL BE AS MARKED BY ENGINEER IN FIELD.
 5. EPOXY COAT REINFORCING INCIDENTAL TO WORK.
 6. N.I.C. = NOT IN CONTRACT.

1 FLOOR SURFACE REPAIRS
SHALLOW REMOVAL / DEEP REMOVAL



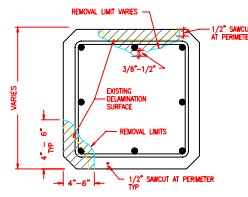
- NOTES:
1. REMOVE AND REPLACE ALL CONCRETE IN AREAS SHOWN CROSS-HATCHED.
 2. REPLACEMENT CONCRETE SHALL BE 5000 PSI, 7% AIR, HARD ROCK, 4\"/>

2 FULL DEPTH REPAIR



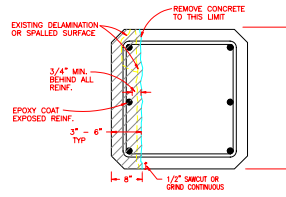
- NOTES:
1. CONTRACTOR SHALL REMOVE AND REPLACE ALL CONCRETE IN HATCHED AREA.
 2. NO DOUBLE PAY FOR CORNERS.
 3. PAY UNITS = S.F.
 4. EPOXY COAT REINFORCING STEEL INCIDENTAL TO WORK.

3 BEAM REPAIR



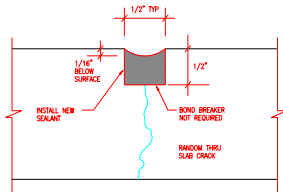
- NOTES:
1. CONTRACTOR SHALL REMOVE AND REPLACE ALL SOUND AND UNSOUND CONCRETE IN HATCHED AREA.
 2. NO DOUBLE PAY FOR CORNERS.
 3. PAY UNITS = S.F.
 4. PATCH MATERIAL SHALL BE LMC OR TRONEL APPLIED MORTAR.
 5. EPOXY COAT REINFORCING STEEL INCIDENTAL TO WORK.

4 COLUMN REPAIR TYPE I

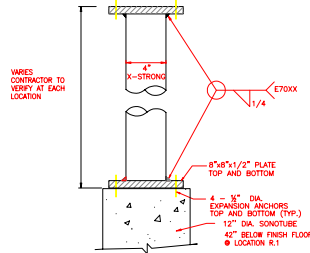


- NOTES:
1. CONTRACTOR SHALL REMOVE AND REPLACE ALL SOUND AND UNSOUND CONCRETE IN HATCHED AREA.
 2. NO DOUBLE PAY FOR CORNERS.
 3. PAY UNITS = S.F.
 4. PATCH MATERIAL SHALL BE LMC OR TRONEL APPLIED MORTAR.
 5. EPOXY COAT REINFORCING STEEL INCIDENTAL TO WORK.

5 COLUMN REPAIR TYPE III



6 RANDOM CRACK REPAIR



7 SUPPLEMENTAL COLUMNS

GENERAL NOTES:

1. CONTRACTOR SHALL FOLLOW MANUFACTURER'S RECOMMENDATIONS FOR DELIVERY, STORAGE, MIXING, SURFACE PREPARATION, APPLICATION AND CURING OF MATERIAL USED IN THE REPAIR WORK.
2. TAKE PRECAUTION TO AVOID DAMAGE TO ANY SURFACE NEAR THE WORK ZONE DUE TO MIXING AND HANDLING OF THE REPAIR MATERIAL.
3. LEAVE FINISHED WORK AND WORK AREA IN A NEAT, CLEAN CONDITION WITHOUT EVIDENCE OF SPILLOVERS ONTO ADJACENT AREAS.
4. CONTRACTOR SHALL FIELD VERIFY SITE CONDITIONS BEFORE STARTING THE WORK.
5. CONTRACTOR SHALL BE RESPONSIBLE FOR DETERMINING QUANTITIES OF REPAIRS PRIOR TO SUBMITTING THE BID. CONTRACTOR SHALL SUBMIT THE REPAIR QUANTITIES TO OWNER WITH BID.
6. CONTRACTOR SHALL REPAIR CRACKS AND SPALLS ON THE DECK DENOTED BY SPRAY PAINT EITHER BOXED OR CROSSED (X). THE REPAIRS SHOWN ON THE DWGS. ARE IN THE GENERAL VICINITY OF THE REQUIRED REPAIR, BUT DO NOT NECESSARILY CORRESPOND WITH THE MARKINGS ON THE DECK ON A ONE-TO-ONE BASIS. ANY CRACKS OR SPALLS DENOTED BY SPRAY PAINT ON THE DECK, BUT NOT INDICATED ON DWGS. SHALL ALSO BE INCLUDED IN WORK.
7. CONTRACTOR SHALL PROVIDE THE OWNER A MINIMUM WARRANTY OF FIVE (5) YEARS ON ALL MATERIALS & WORKMANSHIP INCLUDED IN CONTRACT. ALL WASTE MATERIALS AND DEBRIS RESULTING FROM THE REPAIR WORK SHALL BE REMOVED FROM THE SITE AND DISPOSED OF OFF SITE IN A LEGAL MANNER BY THE CONTRACTOR AT HIS OWN EXPENSE.

GENERAL PROCEDURE:

1. THE PROCEDURES DESCRIBED BELOW ARE IN ADDITION TO THOSE INDICATED IN THE DETAIL OF EACH REPAIR TYPE SHOWN ON THIS SHEET. ALSO, CONTRACTOR SHALL FOLLOW PRODUCT MANUFACTURER'S RECOMMENDATIONS FOR CARRYING OUT THESE REPAIRS.
2. CLEANING: ALL AREAS TO BE REPAIRED MUST BE CLEAN, SOUND AND FREE OF CONTAMINANTS. REMOVE ALL LOOSE AND DETERIORATED CONCRETE, DUST, LANTANCE, GREASE, OIL PAINT AND OTHER BOND INHIBITING MATERIAL FROM THE SURFACE. ALL SURFACES MUST BE SATURATED SURFACE DRY (SSD) WITH NO FROST OR ANY STANDING WATER AT ANY TIME OF REPAIRS.
3. SPALLS: CLEAN THE SURFACE AND THE EXPOSED REINFORCEMENT BY SANDBLASTING OR OTHER MECHANICAL MEANS TO REMOVE ALL CONTAMINANTS AND RUST IN ACCORDANCE WITH MANUF. RECOMMENDATIONS. SAWCUT PERIMETER 1/2\"/>
- 4. CRACKS: CRACKS SHALL BE CLEANED IN ACCORDANCE WITH MANUFACTURER'S RECOMMENDATIONS.
- 5. CONTROL/CONSTRUCTION JOINTS: CLEAN ALL JOINTS AND PRIME ALL SUBSTRATE AS PER PRODUCT MANUFACTURER'S RECOMMENDATIONS. PLACE ELASTOMERIC SEALANT WITH GUN, TOOL AS REQUIRED AND LET CURE.

6. OWNER HAS SET OF ORIGINAL CONSTRUCTION DRAWINGS FOR REVIEW. COPIES WILL BE MADE AVAILABLE AT CONTRACTORS REQUEST AND FEE. ORIGINAL CONSTRUCTION DRAWINGS ALSO CONSTITUTE A PART OF THE CONTRACT DRAWINGS AND SPECIFICATIONS.



PARKING STRUCTURE EVALUATION & REPAIRS
WASHTENAW COUNTY, MICHIGAN
ANN ARBOR COURTHOUSE
101 EAST HURON

Dan Joseph Architects
P.O. B. 40 - Manchester, MI 48158
Ph 734.428.1900 - Fx 734.428.3773

SMC PLYMOUTH
ANN ARBOR, MICHIGAN
1740 4th Street, Ann Arbor, MI 48106
cell and materials engineers, inc.

NO.	DATE	DESCRIPTION	ISSUED BY	CHECKED BY
1	06.09.04	BID SET	ARR	MLN
2	03.20.04	BACKGROUNDS	TRSD	DU
3	03.20.04	ISSUE DATE & DESCRIPTION	ISSUED BY	CHECKED BY

GENERAL NOTES & REPAIR DETAILS

RS102

03.25.04 D:\M04-03 © 2004 Dan Joseph Architects